

EST. 1782
sworders
FINE ART AUCTIONEERS



**The Principal Contents of
North Myms Park**

to be sold at the Stansted Mountfitchet Auction Rooms
in association with Hickman Shearer Chartered Surveyors

Tuesday 17 & Wednesday 18 April 2018





2018 AUCTION DATES

Fine Wine and Port
Tuesday 27 March, 11am

The Principal Contents
of North Mymms Park
*A two-day sale at the Stansted
Mountfitchet Auction Rooms*
Tuesday 17 April, 11am
Wednesday 18 April, 11am

Sporting Art, Wildlife and Dogs
Wednesday 25 April, 10am

Modern and Contemporary Prints
Wednesday 9 May, 10am

Asian Art
Wednesday 16 May, 10am

20th Century Decorative Art and Design
Tuesday 5 June, 10am

The Anniversary Sale
Celebrating a decade in our
award-winning auction rooms
British and European Works of Art
Tuesday 19 June, 10am

Fine Jewellery and Watches
Tuesday 3 July, 10am

Modern British Art
Wednesday 11 July, 10am

Fine Wine and Port
Tuesday 17 July, 11am

Fine Interiors
British and European Works of Art
Tuesday 11 September, 10am

Objects of Desire
Wednesday 3 October, 10am

These specialist sales are complemented
by fortnightly Homes and Interiors sales on
Tuesdays throughout the year.

The remaining contents of North
Mymms Park will be sold in the
Homes and Interiors sale on 15 May.

VAT REGULATIONS

All lots are sold inclusive of VAT.
Please see note on page 167.



THE PRINCIPAL CONTENTS OF NORTH MYMMS PARK

for sale at the Stansted Mountfitchet Auction Rooms

Tuesday 17 and Wednesday 18 April 2018 at 11am



ORDER OF SALE

Tuesday 17 April

Lots 1 - 16	The Marble Gallery
Lots 17 - 67	The High Gallery
Lots 68 - 87	The Worthies' Room
Lots 88 - 114	The Oak Room
Lots 115 - 131	The East Wing
Lots 132 - 149	The Fairbanks Room
Lots 150 - 177	The Reception Hall
Lots 178 - 187	The Study
Lots 188 - 210	The Morning Room
Lots 211 - 269	Silver

Wednesday 18 April

Lots 300 - 331	Tapestries, Rugs and Carpets
Lots 332 - 372	The Cherry Corridor
Lots 373 - 381	The Cherry Room
Lots 382 - 394	The Minstrel Gallery
Lots 395 - 438	The Burns Suite
Lots 439 - 461	The Long Gallery
Lots 462 - 479	The West Wing
Lots 480 - 526	The Attics
Lots 527 - 542	The Stables
Lots 543 - 565	The Loggia and Gardens

VIEWING TIMES

Friday 13 April	9am - 5pm
Saturday 14 April	10am - 1pm
Sunday 15 April	10am - 1pm
Monday 16 April	9am - 5pm
Tuesday 17 April	From 9am
Wednesday 18 April	From 9am

ONLINE BIDDING

Bid live at www.sworder.co.uk (0% surcharge)

FURTHER INFORMATION

Telephone: 01279 817778
Email: auctions@sworder.co.uk

To obtain more images and condition reports for lots in this catalogue, please visit our website www.sworder.co.uk



North Mymms Park

North Mymms Park is held to have been built by Sir Ralph Coningsby who succeeded to the property in 1590 and died in 1615. Sir Ralph's grandfather, John, had acquired the estate by his marriage with Elizabeth, co-heiress of Henry Frowick, who had in turn succeeded it from the Knolles family, lords of Mymms since the early 15th century.

From the Coningsbys it passed, in 1658, to Sir Thomas Hyde, and thence by marriage to the Dukes of Leeds. The estate was purchased by Mr Walter Hayes Burns, brother-in-law of J Pierpont Morgan, in the early 1890s, when considerable internal modifications and enlargements were carried out by the fashionable London architect, Sir Ernest George, to accommodate Mr and Mrs Burns' growing collection of works of art, furniture and pictures.

At the same time, the gardens were laid out by Sir Ernest, and the famous rose garden planned by William Robinson. The house, collections and gardens were the subject of three articles in *Country Life* in January 1934. Their descendant, Major General Sir George Burns, ex-Lord Lieutenant of Hertfordshire, sold the house in 1979. Most recently, it has been in the careful ownership of a large multinational company.

The house was regarded by Pevsner as 'one of the best examples of the late Elizabethan style in the country – 'inferior to none but Hatfield'.

REMOVAL OF LOTS

All lots should be removed by **Friday 27 April**. Items remaining after this date will be subject to storage fees.

Furniture, tapestries and picture lots remaining after this date will be removed to store approximately 6 miles from the Auction Room and will accrue the following charges:

Removal £20 per lot
Storage £1 per lot, per day, until Monday 7 May
and
£2 per lot, per day, thereafter

Items will be removed to:
Messrs Perry Removals
Chapel End
Broxted
Essex
CM6 2BW

TUESDAY 17 APRIL

Lots 1-269

The Marble Gallery

1-16



Lot 1
English School, 1594
THE SYDENHAM PORTRAIT - PORTRAIT OF
A GENTLEMAN, SAID TO BE SIR FRANCIS
DRAKE - FULL LENGTH STANDING, IN A
WHITE DOUBLET, STRIPED BREECHES AND
GREEN STOCKINGS, HOLDING A STICK
Inscribed 'ANO DEL 1594', oil on panel
162 x 90cm
£10,000 - 15,000

Provenance: Sir Philip Sydenham Collection.

Literature: Roy Strong, 'Tudor and
Jacobean Portraits', 1969,
p.71.



Lot 2

Philip Mercier (French, 1689-1760)

A YOUNG WOMAN TAKING OFF HER STOCKING

Oil on canvas

127 x 102cm

£15,000 - 20,000

There are several recorded versions of this composition, c.1745, another of which, very similar in detail and of the same dimensions, was sold at Christie's, 9 June 2004 (£75,000). John Ingamells has suggested that it may depict a scene from Richardson's 'Pamela', published in 1740.

Literature: John Ingamells, 'The Paintings, Drawings and Etchings of Philip Mercier', Walpole Society, vol. XLVI, p.49, nos. 205, 6 or 7.



3

Lot 3

Johannes Spruyt
 (Dutch, 1627-1671)
 DUCKS, DUCKLINGS AND SNIPE
 BY AN ESTUARY
 Oil on canvas
 74 x 108cm
 £10,000 - 15,000

Provenance: With Thomas Agnew
 and Son, London.

Lot 4

Abraham van Cuylenborch
 (Dutch, 1620-1658)
 NYMPHS BATHING IN A GROTTA
 Indistinctly signed and
 dated 1651, oil on panel
 31 x 40cm
 £1,500 - 2,000



4



Lot 5
Cornelis Dusart (Dutch, 1660-1704)
BOORS CAROUSING IN A TAVERN INTERIOR
Signed l.c. (on the bench), oil on canvas
77 x 68cm
£12,000 - 18,000

Provenance: Sotheby's London, 20 April 1988, lot 77 (£20,000).



6

Lot 6
Jean-Eugène Clary (1856-1929)
A RIVER LANDSCAPE
Signed l.l., oil on canvas
45 x 81cm
£800 - 1,200

Lot 7
Henry H Parker (1858-1930)
A RIVER LANDSCAPE WITH CATTLE WATERING AND HAYMAKERS
IN THE DISTANCE
Signed l.r., oil on canvas
61 x 92cm
£1,500 - 2,000



7



8

Lot 8
A pair of heavy cast brass candlesticks, 20th century in the 17th century manner, the turned sconces above circular drip trays, leaf cast pedestals, cast tripod bases and paw feet, 60cm high (2)
£100 - 200

Lot 9
A pair of Chinese export ware blue and white gu form vases, 20th century, decorated all over with landscapes and floral scenes, 61.5cm (2)
£100 - 200



9

Lot 10
Three giltwood and cast metal, two-branch, three-light, table lamps, 20th century, with leaf-carved, vase-shaped pedestals on plinth bases, with shades, 77cm overall (3)
£150 - 200

Lot 11
A pair of giltwood and cast metal, two-branch, three-light table lamps, 20th century, with leaf-carved, vase-shaped pedestals on plinth bases, with shades, 77cm overall (2)
£100 - 150



10



11



12



15



13



14

Lot 12
 A four-panel folding leather screen, late 19th century, painted all over in oils with a Dutch town scene, a river, bridge, figures and boats in the foreground, 226cm wide (open) 199cm high
 £300 - 500

Lot 13
 A four-panel oak mule chest, 18th century, the rising lid above an arrangement of three small and two large cock-beaded drawers, with brass handles and shaped bracket feet, 150.5cm wide 63cm deep 93cm high
 £800 - 1,200

Lot 14
 A William IV mahogany chifffonier, with a shaped, moulded, leaf-carved and scrolled pediment, above three graduated waterfall open shelves, supported on turned and tapered pillars, the base fitted with a single drawer above two panelled doors flanked by leaf-carved pillars, to a plinth base, 118cm wide 46cm deep 196cm high
 £600 - 1,000

Lot 13
 A Portuguese colonial mahogany and ebonised banded chest, early 19th century, the rising lid decorated with a pair of shaped circular hinge caps, above a large shield-shaped brass escutcheon, two frieze drawers and two massive brass lifting handles to the sides, on a replacement bracket base, 168cm wide 76cm deep 83cm high
 £500 - 1,000



16

Lot 16
 An oak refectory table, 17th century, the plank top with cleated ends above a shaped frieze, gun barrel ring-turned legs and block feet, united by low stretchers, 210cm wide 86cm deep 74cm high
 £1,000 - 1,500

The High Gallery

17-67



Lot 17

Johannes Glauber (Dutch, 1646-1726)

**A CLASSICAL LANDSCAPE WITH TRAVELLERS ON A PATH, CATTLE
AND SHEEP BY A STREAM AND A FORTIFIED VILLAGE BEYOND**

Oil on canvas

102 x 127cm, in a carved giltwood frame

£15,000 - 20,000

Provenance: Sotheby's London, 20 April 1988, lot 125 (£23,000).



Lot 18

Attributed to Crescenzo Onofri (Italian, 1632-1712)

THE REST ON THE FLIGHT TO EGYPT;

A LANDSCAPE WITH PEASANTS AND A DROVER

A pair, oil on canvas

61 x 143cm (2)

£10,000 - 15,000

Provenance: Probably George, 7th Baron Kinnaid (1754-1805);
by descent in the Kinnaid family at Rossie Priory, Perthshire;
Christie's London, 7 July 1989, lot 95 (£24,000).



19



21



20

Lot 19

The Pseudo Roestraten (Dutch, late 17th century)
STILL LIFE WITH BOOKS, A POCKET WATCH, A JUG AND A PORCELAIN CUP ON A CARPET-COVERED TABLE

Oil on canvas
 75 x 63cm
£2,000 - 3,000

Lot 20

Circle of Jean-Baptiste Huet (French, 1745-1811)
A LANDSCAPE WITH DROVERS, CATTLE AND SHEEP

Pastel
 47 x 75cm
£1,500 - 2,000

Lot 21

Grün (German, 18th century)

AN OWL AND A FINCH
 Signed l.r., oil on canvas

77 x 64cm
£1,000 - 1,500



22

Lot 22

Benjamin Williams Leader RA
(1831-1923)

THE THAMES AT STREATLEY

Signed and dated 1903 l.l., oil on canvas
 77 x 127cm
£4,000 - 6,000

Provenance: Christie's London, 12 February
 1982, lot 32 (£3,400);
 with Richard Green, London.



23



24



26



25

Lot 23

A George III mahogany apothecary's cabinet, the lift-up lid enclosing a fitted interior with bottles and stoppers, the base drawer with sliding compartments, two lidded tin drug boxes, scales, weights and glass bottles,

29cm wide
21.5cm deep
25cm high
£300 - 500

Lot 24

A large mahogany apothecary's cabinet, 19th century, the hinged lid with brass corners and a plaque inscribed 'A.E. Sibley', opening to reveal a well-fitted interior with lidded bottles, many with paper labels, a pestle and two mahogany boxes, one enclosing a balance on a lift-out tray, the fall front with a lidded box bearing a plaque reading 'Prize Medal 1862 For Excellence of Manufacture. Savory & Moore, Chemists to the Queen, London', the sides with brass carrying handles,

50cm wide
30cm deep
37cm high
£600 - 1,000

Lot 25

A George III mahogany apothecary's cabinet, the hinged cover enclosing thirteen compartments with bottles, stoppers and a measure, the hinged front enclosing four 'windows' and a base drawer with four bottles and stoppers and a balance, the sides with carrying handles,

23cm wide
19.5cm deep
21.5cm high
£300 - 500

Lot 26

A set of twelve brass apothecary measures, by 'W & T Avery 14, 15 & 16 Cow Cross Street, London EC', forty fluid ounces to one fluid drachem, each engraved with the measure and 'Lincolnshire (Holland Division) 1891', with royal stamps and numbered 2008, in a fitted mahogany case with a brass plaque to the lid inscribed 'Standard Apothecaries measure, Lincolnshire (Holland Division) 1891', tallest measure 13cm

case 54cm wide
£500 - 800

Lot 27

A large glass apothecary's display jar and cover, decorated with the royal United Kingdom coat of arms and inscribed 'magnesia',

74cm high (2)
£300 - 500



27



28



29



30



31



32



34



33 part lot

Lot 28

A brass polarimeter, by Reichert - Wien, No. 2224, on an iron tripod base, 46cm wide, 60cm high, £100 - 200

Lot 29

A brass monocular microscope, late 19th century, on a blackened metal base, engraved 'Bourgeois optni 27 rue des Pyramides', 27cm, £80 - 120

Lot 30

A pair of Meissen-style vases and covers, 20th century, of octagonal panelled shape with high domed covers and gilt finials, decorated with panels of flowers and finches, 38cm high (4), £200 - 400

Lot 31

Royal memorabilia, to include: a 'Replica of the Queens Doll House designed by Sir Edward Lutyens R A', the cover with a British Empire Exhibition crest, 7cm high, A J Kent Ltd. George IV coronation plate, 18cm diameter, an Edward VII commemorative plate, 1910, 17.5cm diameter, a Paragon China George VI and Queen Elizabeth coronation mug, 1937, 9.5cm, a Leighton Pottery Edward VIII coronation beaker, 9.5cm, and a George V and Queen Mary coronation beaker 'Presented by their Majesties, Crystal Palace, June 30th, 1911', 10cm (qty.) £100 - 200

Lot 32

A brass carriage clock, with an enamel dial, the repeating mechanism striking the hours and half hours, 14cm high, £150 - 250

Lot 33

A Chinese ivory chess set, mid-19th century, with engine turned and carved decoration, red stained and natural, 'Brought to the UK as booty from the Opium Wars, 1840-1842, by Colonel Reeves'; king 12cm high, an Indian Vizagapatam ivory folding chess board, early 19th century, and a Staunton pattern ivory part chess set, mid 19th century, natural and stained green, board 44.5 x 44cm, king 8cm (qty.) £300 - 600

Lot 34

A pair of brass ejector candlesticks, 19th century, with faceted urn-shaped knops, 19.5cm high, and a similar pair of candlesticks converted to table lamps, candlesticks 30cm high (4), £100 - 200

Lot 35

A collection of glass drug jars and stoppers, with gilt paper and etched labels (qty.) £50 - 100



35



36



37



38



39

Lot 36
A set of eighteen modern champagne flutes,
24cm high (18)
£80 - 150

Lot 37
A matched set of eighteen modern champagne flutes,
24cm high (18)
£60 - 80

Lot 38
A set of nine modern champagne flutes,
23.5cm, and
five similar wine glasses,
20cm (14)
£80 - 150

Lot 39
Five modern brandy glasses,
with cut and engraved decoration,
together with ten whisky tumblers (15)
£80 - 150

Lot 40
A pair of pewter dishes and a charger,
by S Duncomb, London,
dishes 41.5cm diameter
charger 46cm diameter,
another charger,
engraved 'B T E, D G A' and stamped
'A S' and 'S S M',
charger 46cm diameter, and
another,
engraved 'S S M',
37.5cm diameter
all with touch marks verso (5)
£150 - 250

Lot 41
A Dutch delft blue and white baluster vase,
decorated with informal
flowers, shrubs, birds and
insects, mounted as a table
lamp with shade,
lamp 37cm high
£80 - 150

Lot 42
A set of George III steel fire
irons,
with ring turned shafts and
octagonal finials,
together with another
shovel and tongs,
tongs 72cm long (4)
£600 - 1,000



40



41



42



43

Lot 43
 A Victorian mahogany stick barometer, the arched top with an ivory register over a silvered thermometer and turned cistern cover, 90cm high
 £200 - 300



44

Lot 44
 A burr walnut longcase clock, c.1730, John Jefferies, London, the arched brass dial with subsidiary strike/silent and seconds dials, a nameplate and calendar aperture on a matt ground within a silver chapter ring and scrolled urn spandrels, the ringed five-pillar eight-day movement striking on a bell, the hood with a cushion top, fret cut panels and stop fluted columns, dial 11½in (29cm)
 case 240cm high
 £1,500 - 2,500



45

Lot 45
 A George III mahogany longcase clock, by John Harding, London, the arched brass dial with subsidiary strike/silent and seconds dials, a calendar aperture, nameplate and scrolled spandrels, supporting a striking eight-day movement, the arched hood over a conforming trunk door within quarter turned part-fluted and brass-capped columns, dial 11in diameter (28cm)
 case 205cm high
 £800 - 1,500

*Each lot is subject to Buyer's Premium at 26.4% inclusive of VAT @ 20%
 Lots marked * will be subject to an additional fee - please see ARR details on page 163*

Lot 46

A George II oak bookcase,
the moulded cornice over two astragal glazed doors,
two panelled doors and bun feet,
150cm wide
36cm deep
252cm high
£2,000 - 4,000



46

Lot 48

An inlaid oak buffet.
17th century and later, the top section with egg and dart and arched
moulding, a panel carved with scrolling foliage and the date '1674'
inlaid over two panelled doors flanking a central panel within turned
columns, the base with two frieze drawers over two panelled doors, the
top inlaid with scrolling tulips, the base similarly inlaid within chequer
stringing,
173cm wide
52.5cm deep
171cm high
£1,000 - 2,000



47

Lot 47

An extraordinary late Victorian oak sideboard,
the raised back with a dentil and carved frieze over five leaded glass doors and turned Ionic
columns, the base with two drawers and two panelled doors, one enclosing a cellaret,
within carved ends with scrolled brackets, turned and carved columns and open shelves,
271cm wide
78cm deep
215cm high
£1,500 - 2,500



48

Lot 49

Two modern library chairs,
in the George III style with deep
buttoned brown leather upholstery,
62cm wide
57cm deep
101cm high (2)
£150 - 250



49



50



51

Lot 50

A modern mahogany swivel office chair in the Victorian style,
with deep buttoned brown leather upholstery,
85cm high
£150 - 250

Lot 51

A pair of modern brown leather armchairs,
with deep buttoned backs, seat cushions, studded arms and scrolled
and carved front legs,
79cm wide
82cm deep
78cm high (2)
£300 - 500

Lot 52

A pair of modern brown leather two-seat
chesterfield settees,
with deep buttoned upholstery, seat cushions and
studded borders,
147cm wide
80cm deep
72cm high (2)
£500 - 800



52 part lot



53

Lot 53

A modern brown leather two-seat chesterfield
settee,
with deep buttoned upholstery, seat cushions and
studded borders,
147cm wide
80cm deep
72cm high
£250 - 400

Lot 54

A Victorian oak dinner gong,
on a turned stand and outswept
supports,
65cm wide
91cm high
£100 - 200



54

Lot 55

Two oak joined stools,
17th century and later, one with a
lunette carved frieze and one with a
moulded frieze, stamped '1 B', both on
turned legs,
54.5cm wide
51.5cm high (2)
£200 - 300



55

Lot 56

An oak joined stool,
in the 17th century style, on turned
legs,
56cm high,
together with a modern low
octagonal table,
with a frieze drawer and on turned legs
united by stretchers,
41.5cm diameter
49.5cm high (2)
£100 - 150



56

Lot 57

An oak joined stool,
17th century and later, on turned
supports and wooden castors,
52cm high
£100 - 200



57

Lot 58

A pair of modern elm and ash high
back Windsor chairs,
with saddle-shaped seats, cabriole front
legs and crinoline stretchers,
104cm high (2)
£300 - 500



58

Lot 59

A Louis XVI-style mahogany elbow
chair,
early 20th century, the shaped padded
back over moulded arms and shaped
supports, the overstuffed seat with a
serpentine front on scrolled front legs,
92cm high
£150 - 250



59

Lot 60

An oak refectory table, in the 17th century Dutch style, the cleated plank top over a wavy frieze, four 'cup and cover' legs, united by an 'X'-shaped stretcher, 243cm wide 112cm deep 76cm high £600 - 1,000



60



61

Lot 61

An oak serving table, 17th century, the cleated plank top over a wavy frieze, carved and turned bulbous legs, low stretchers and turned feet, 179cm wide 67cm deep 77cm high £1,500 - 2,500

Lot 62

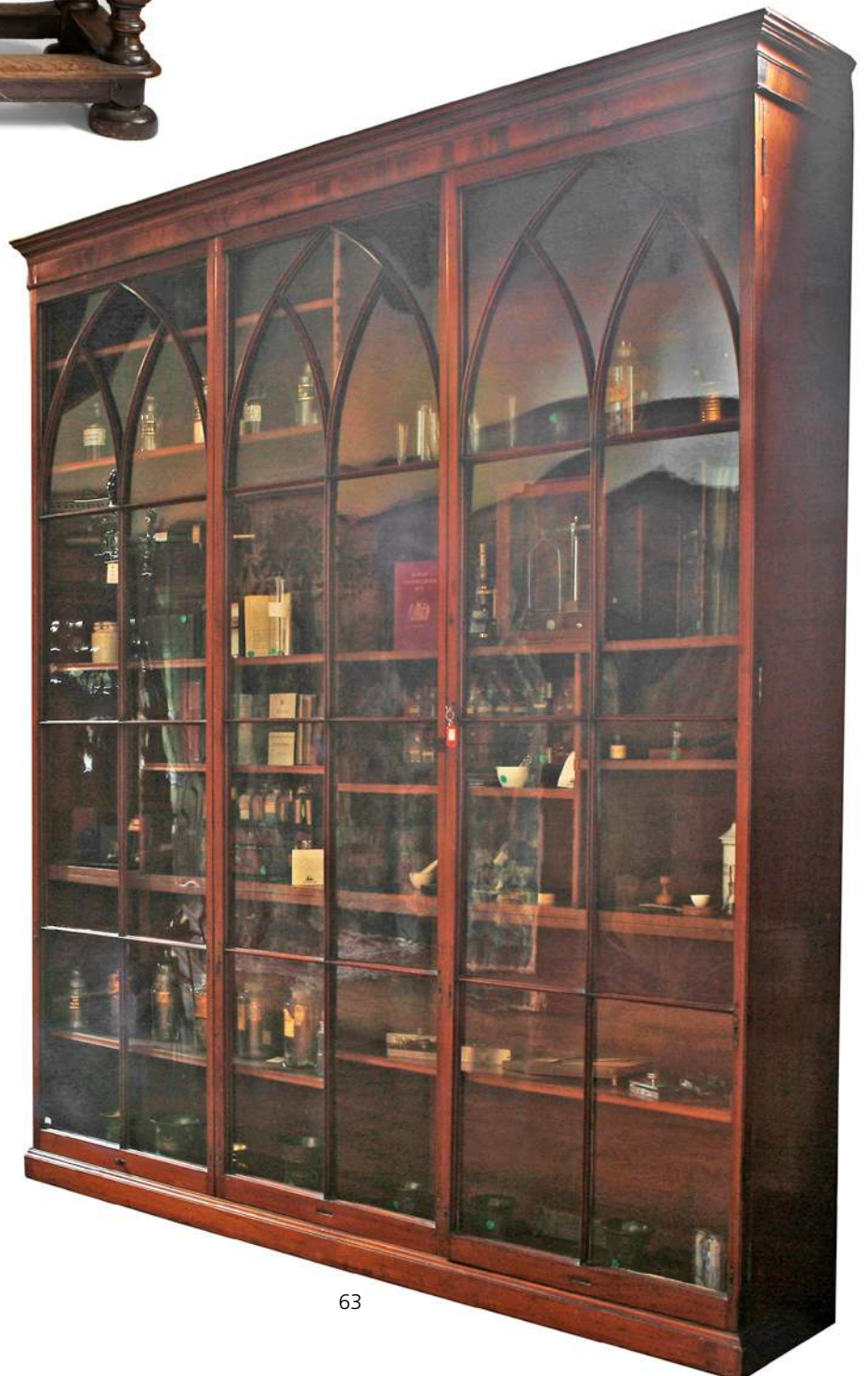
A lignum vitae wassail cup, 18th century, the turned bowl on a moulded column with three brass taps and a turned base, 51cm high 40cm diameter £300 - 500

Lot 63

An unusual George III large mahogany floor-standing apothecary's cabinet, having a moulded cornice over three doors with lancet-shaped astragals enclosing adjustable shelves, the two outer doors hinged, the central door sliding, each door with three brass escutcheons, on a plinth base, 242cm wide 43cm deep 275cm high £1,000 - 2,000



62



63

Lot 64

A Victorian oak three-tier buffet, the raised back with carved Renaissance Revival decoration, supported on two turned and carved Ionic columns, the base with similar and square supports, the centre section with a rise and fall panel, 181cm wide
65cm deep
66cm high
£300 - 500

Lot 65

An oak low occasional table, c. 1930, the circular top over a frieze carved with scrolling foliage and four supports surmounted by green man masks, over an incurved flat stretcher and turned feet, 77cm diameter
64cm high
£80 - 120



65



67

Lot 66

A George III mahogany secretaire bookcase, having a dentil cornice over two astragal doors, a secretaire drawer fitted with shelves and pigeonholes, two panelled doors enclosing two base drawers and bracket feet, the base with chequer stringing and an ebony moulded border, 101cm wide
53cm deep
219cm high
£500 - 800

Lot 67

A reproduction mahogany canterbury, by Shaw of London, 52cm wide
52cm high
£80 - 120



64



66



The Worthies' Room

68-87

Lot 68

Alfred de Breanski Sr. (1852-1928)

A SEPTEMBER EVENING, INVERRNAID

Signed l.r., oil on canvas

77 x 127cm

£5,000 - 7,000

Provenance: With Richard Green, London.

Lot 69

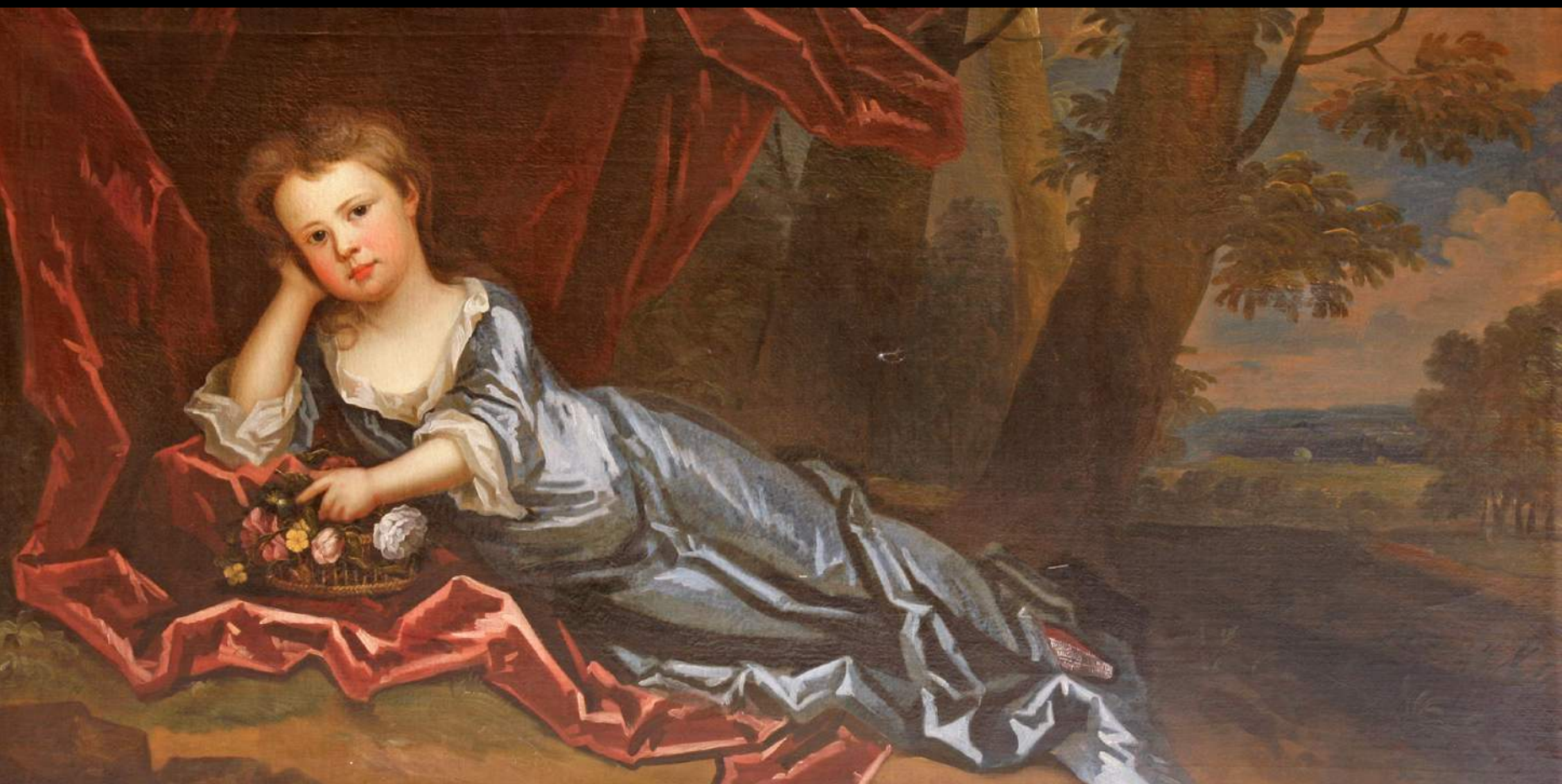
Circle of Michael Dahl (Swedish, 1656-1743)

PORTRAIT OF A YOUNG GIRL, FULL LENGTH RECLINING IN A LANDSCAPE,
WEARING A BLUE DRESS, HER HAND RESTING ON A BASKET OF FLOWERS

Oil on canvas

76 x 149cm

£2,000 - 3,000



Lot 70

John Buckler (1770-1851)
A MERCHANTMAN AND OTHER SHIPPING OFF THE COAST
 Signed and dated 1797 l.r., watercolour
 39 x 57cm
 £200 - 300



70

Lot 71

French School, 19th century
STUDY OF A TRIUMPHAL ARCH
 Pen and ink and watercolour
 41 x 57cm
 £200 - 300



71

Lot 72

French School, late 18th century
A CORNER OF RUE TAITBOUT, PARIS
 Pen and ink and grey washes
 38 x 55cm
 £200 - 300



72

Lot 73

Richard Polydore Nodder (fl.1793-1820)
A GREAT CRESTED NEWT
 Pen and ink and coloured washes
 5.75 x 9.5cm
 £200 - 300



73



74



77



75



78



76

Lot 74

A close plated serving tray, 19th century, with a galled rim, 62 x 40cm, two pairs of 18th century-style cast brass table candlesticks, 9 and 8.5cm tall, and a single brass candlestick, 18th century, 9cm (6)
£100 - 200

Lot 75

An English pewter shallow dish, 18th century, 56cm, and another, 19th century, 46cm (2)
£100 - 200

Lot 76

A pair of delft blue and white vases, late 18th century, of octagonal gullet form, with decorator's initials to base, 29.5cm (2)
£200 - 400

Lot 77

A dome-topped, tooled leather and gilt-decorated jewel casket, 19th century, with an hinged lid and plain interior, 18cm wide 11.5cm high
£60 - 100

Lot 78

A Dutch delft blue and white wall plate, early 18th century, decorated with a bird, jardinière and vases to the central field, within a stylised floral border, 34cm
£100 - 200



79



80



81



82

Lot 79

A brass desk inkwell, 19th century, probably French, cast as an oyster shell, opening to reveal a half-circular inkwell, a circular pounce pot and three pen apertures, supported on three winged lion monopodia to a square marble base, 10.5cm wide
£150 - 250

Lot 80

A blue and white squat pedestal 'apothecary's' baluster vase, 18th century, with a slender bottle neck, 28cm, and a delft blue and white double-gourd vase, 18th century, painted with flowers and birds, 36.5cm high (2)
£80 - 120

Lot 81

A silver-mounted stemmed coconut cup, early 19th century, well carved with scenes of an English man o'war, boxers, Britannia and a British heraldic crest, the cup with a silver rim, pedestal and base, London 1807, with maker's mark 'M.T.' possibly for Mehat and Turton, 11.5cm rim diameter
18cm high
£700 - 1,000

Lot 82

A pair of cylindrical pedestal table lamps, painted wood and faux rouge marble, with decorative brass mounts and stepped plinth bases, with shades, 45cm (2)
£100 - 200



83

Lot 83
A panelled oak tridarn, late 17th/early 18th century, with an open pot board upper section, supported by turned front columns over two small single door cupboards, flanking a central faux door, the base fitted with two single door cupboards on stilt feet, 137cm wide 53cm deep 190cm high
£2,000 - 3,000

Lot 84
A Continental oak serving table, 18th century and later, the three-plank top above a shaped frieze with applied moulding, supported on square tapering legs and block feet united by low moulded stretchers, 143cm wide 82cm deep 84cm high
£1,000 - 2,000

Lot 85
An oak side table, 17th century and later, the rectangular moulded top above a single frieze drawer, on turned legs united by an 'X' framed wavy stretcher, 85cm wide 51cm deep 70cm high
£200 - 400



84



85



86



87

Lot 86
An oak side table, early 18th century, the rectangular moulded top over a single frieze drawer with brass drop handles and ring turned legs, united by a low moulded stretcher, 71cm wide 48cm deep 68.5cm high
£300 - 500

Lot 87
A Chinese-style carved mahogany open display unit, 20th century, with chamfered pillars, enclosing three adjustable plate glass shelves, 130cm wide 56cm deep 213cm high
£400 - 600

The Oak Room

88-114



Lot 88

Peter Monamy (1681-1749)

A ROYAL YACHT APPROACHING A FLAGSHIP OF THE RED

Oil on canvas

148 x 130cm

£6,000 - 8,000

Provenance: Sotheby's London, 9 March 1988, lot 8
(£25,000).



89



90



91

Lot 89

Circle of Willem van de Velde the Younger (Dutch, 1633-1707)
 BARBARY PIRATES ATTACKING A SPANISH SHIP

Oil on canvas
 71 x 115cm, in a carved giltwood Lely frame

£3,000 - 5,000

Provenance: Sotheby's London, 15 July 1988, lot 69 (£4,500).

Lot 90

George Chambers (1803-1840)
 THE BATTLE OF TRAFALGAR

Signed and dated 1839 l.r., oil on canvas
 81 x 117cm, in the original gilt gesso frame

£10,000 - 15,000

Provenance: Phillips London, 7 June 1988, lot 8 (£16,000).

Lot 91

... Barry (18th century)
 AN ENGLISH FLAGSHIP WITH OTHER SHIPPING

Indistinctly signed l.l., oil on canvas
 71 x 97cm

£1,500 - 2,500

Lot 92

Circle of David Morier (Swiss, 1705-1770)
 A NOBLEMAN EXERCISING HIS GREY HUNTER

Oil on canvas
 54 x 64cm

£1,000 - 1,500



92



93

Lot 93

A set of three George III brass-mounted and steel fire irons, with hexagonal finials (3)
£300 - 500

Lot 94

A Dutch coppered and brass lidded 'doofpot' (ash can), early 19th century, the tapered cylindrical body with a carrying handle on turned brass feet (2)
£150 - 250

Lot 95

An oak tabletop deed box, probably 19th century, with all-over wooden strapwork and a steel hasp and hinges to open half the lid, on stile feet, 32cm wide 23cm deep 17.5cm high
£200 - 300



94



95

Lot 96

A pair of glass and cast brass electric table lamps, 20th century, with vase-shaped finials and paw feet, with shades, approximately 75cm overall (2)
£100 - 200

Lot 97

A pair of glass and cast brass electric table lamps, 20th century, with vase-shaped finials and paw feet, with shades, approximately 75cm overall (2)
£100 - 200



96



97



98



99

Lot 98

A pair of decorative black-glazed and gilt-decorated pottery vase-shaped electric lamp bases, 20th century, with shades, 75cm overall (2)
£100 - 200

Lot 99

A pair of cut-glass cylindrical bowls, 16cm diameter, a blown glass squat pedestal fruit bowl, 20.5 diameter, an oviform cut-glass flower vase, 24cm, a broad-rimmed blown and cut-glass pedestal baluster vase, 30cm, a cone-shaped broad-rimmed blown glass vase, 35cm, and a broad-rimmed, blown glass squat pedestal vase on a raised circular foot, 39cm (7)
£150 - 250



100

Lot 100

A Dutch-style eighteen-branch brass electrolier, 104cm diameter
£200 - 400

Lot 101

A pair of Dutch-style brass eighteen-branch electroliers, 74cm diameter (2)
£200 - 400



101 part lot



102



103

Lot 102

A large leather 'Black Jack' jug,
18th century,
59.5cm high
£500 - 800

Lot 103

A matched set of three graduated 'Black Jack' leather jugs,
one bearing a crest,
35, 39 and 48cm high (3)
£600 - 900

Lot 104

A Regency mahogany longcase clock,
c.1810, with an eight-day, striking, deadbeat movement, the circular silvered dial
with subsidiary seconds and date sweeps, signed 'Wieland of Walworth', with
a ball finial above an arched hood with stop fluted pillars and brass fretwork
decoration, the case with a panelled door, stop fluted pillars and a bracket base,
207cm high
£3,000 - 6,000

Lot 105

An oak three-plank refectory table,
late 17th century, with cleated ends, the plain frieze with applied carved corner
mounts above four well carved turned baluster legs and a low centre 'H'-shaped
stretcher,
280cm wide
87cm deep
83cm high
£2,000 - 3,000



104



105



106 part lot



107 part lot

Lot 106

A set of twelve single dining chairs, 20th century, in the late 17th century style, with upholstered shaped backs and overstuffed seats, on turned front legs and 'H'-shaped stretchers (12)
£1,000 - 1,500

Matching with lots 107 and 108.

Lot 107

A set of twelve single dining chairs, 20th century, in the late 17th century style, upholstered with shaped backs and overstuffed seats, on turned front legs and 'H'-shaped stretchers (12)
£1,000 - 1,500

Matching with lots 106 and 108.

Lot 108

A set of ten single dining chairs, 20th century, in the late 17th century style, upholstered with shaped backs and overstuffed seats, on turned front legs and 'H'-shaped stretchers (10)
£800 - 1,200

Matching with lots 106 and 107.

Lot 109

A George III oak side table, the rectangular moulded top above a single frieze drawer with brass loop handles and square chamfered legs, 78cm wide
50cm deep
72cm high
£200 - 300



108 part lot



109



110 detail



Lot 110

A Regency mahogany three-piece sideboard, the central board with a rectangular top, above an ebonised beaded frieze with applied cast bronze leaf and fruit wreaths, raised on a pair of carved, painted, bronze effect 'panther' monopodia, flanked by matching pedestals, each with a single panelled door above carved ebonised paw feet,
 244cm wide in total
 63cm deep
 98cm high (3)
 £3,000 - 5,000



Lot 111

A Regency mahogany and ebonised sideboard, the panelled lancet back over three frieze drawers with wrythen ebonised carved panels, four sabre legs, inlaid with stylised anthemia, stringing and square pad feet,
 210cm wide
 75cm deep
 133cm high
 £2,000 - 4,000



112

Lot 112

A reproduction oak side table, in the 18th century manner, fitted with a single moulded frieze drawer on turned legs and a low pot board shelf,
72cm wide
48cm deep
78cm high
£100 - 200



114

Lot 113

A reproduction oak draw-leaf refectory table, in the 18th century style, with a carved frieze over four heavy turned baluster legs and low stretchers,
244cm wide
81cm deep
82cm high (closed)
£600 - 1,200

Lot 114

An oak plank top serving table, with cleated ends, the moulded frieze on ring turned legs, united by a low stretcher,
130cm wide
65cm deep
74cm high
£500 - 1,000



113

The East Wing

115-131



Lot 115
Manner of Canaletto
THE GRAND CANAL AND THE RIALTO
Oil on canvas
61 x 101cm
£2,000 - 3,000



116



117

Lot 116

Circle of Nicholas Condy (1793-1857)

A SHORE SCENE WITH FIGURES AND BEACHED VESSELS

Oil on panel

33 x 40cm

£300 - 500

Lot 117

English School, early 19th century

FIGURES IN A WOODED LANDSCAPE NEAR CASTLE RUINS

Oil on canvas

35 x 44cm

£200 - 300



118

Lot 118

Circle of Philipp Peter Roos (German, 1657-1706)

A DROVER WITH CATTLE, GOATS AND A DOG NEAR RUINS

Pen and ink and grey washes

36 x 50cm

£300 - 500

Lot 119

William Henry Simmons, after Richard Ansdell

A SCENE AT WESTON

Mixed method engraving, published 1841

50 x 64cm

£200 - 300



119



120 part lot



121



122

Lot 120
A pair of giltwood and cast metal two-branch, three-light, table lamps, 20th century, with leaf carved, vase-shaped, pedestals above plinth bases, with shades, 57cm (2)
£100 - 150

Lot 121
An Edwardian black marble mantel clock, with classical brass mounts and columns and an enamel dial, the movement striking on a gong, bearing a brass presentation plaque from 'Henry S Wellcome to Thomas John Price...April 1903', 50cm wide 40cm high
£100 - 200

Lot 122
Two modern Lalique-style vases, each of ovoid shape, moulded with flowers and foliage, one deep blue, one opaque (2)
£50 - 100



123

Lot 123
A Louis XV serpentine kingwood commode, the variegated marble top over two short and one long drawer within shaped sides, on raised scrolled angular front legs, the drawers and sides with crossbanded panels, with bold ormolu drawer furniture, mounts and sabots, 132cm wide 52cm deep 82cm high
£2,000 - 4,000



124



125



128



126 part lot



127



129



130



131

Lot 124

A pair of 17th century-style oak single chairs, late 19th century, the high backs with double caned panels surmounted by crest rails carved with crowns, cherubs and scrolls, the turned uprights with child's head finials, the caned seats within carved foliate rails on scrolled front legs, linked by a conforming stretcher, 118cm high (2)
£200 - 400

Lot 125

An Adam-style mahogany demi-lune table, 20th century, the frieze carved with ribbon-tied scrolling foliage within beaded borders, on square tapering legs worked with pendant husks and spade feet, 117cm wide
58cm deep
77cm high
£100 - 200

Lot 126

Two mahogany coat racks, with turned supports, one with a part carpeted base, 100cm wide
57cm deep
186cm high (2)
£300 - 400

Lot 127

A modern mahogany coat rack, with turned supports, a part carpeted base and castors, 100cm wide
57cm deep
186cm high
£200 - 300

Lot 128

A Victorian cast iron stick stand, with a foliate pierced back and lift-out tray, registration lozenge to base, 74cm high, and another wrought iron stick stand, 20th century, 63cm high (2)
£100 - 200

Lot 129

A mahogany side table, mid-18th century, the rectangular top with re-entrant corners over a frieze drawer with original brass handles, on lappet carved and turned legs to pad feet, 72cm wide
48cm deep
70.5cm high
£400 - 800

Lot 130

A Victorian mahogany fire screen, with three fabric-filled sliding panels, on scrolled feet, 56cm wide
112cm high
£100 - 200

Lot 131

A Victorian walnut three-tier whatnot, with a three-quarter fret cut gallery and turned supports, 56cm wide
97cm high
£150 - 250

The Fairbanks Room

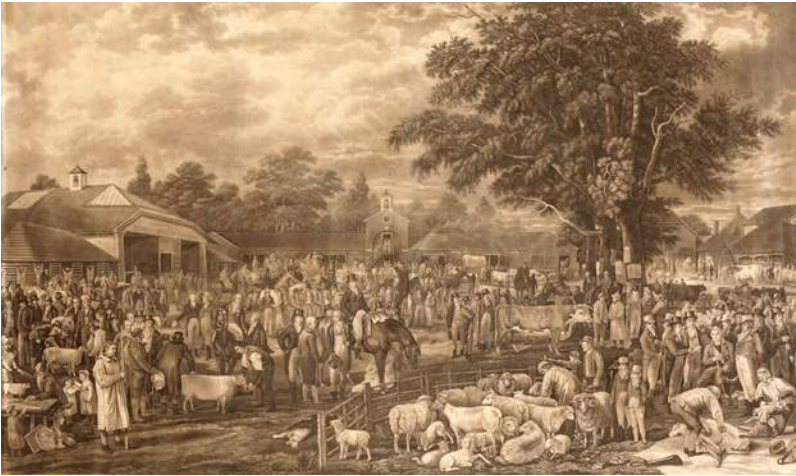
132-149



132 part lot

Lot 132
Nine sepia photographs of North Myms House,
early 20th century, depicting the house elevations, the gardens,
the High Gallery, the Jacobean Room and the Gallery,
23 x 17.5cm, individually framed with handwritten annotations (9)
£200 - 300





133

Lot 133
 Thomas Morris, after George Garrard (1760-1826)
 'WOBURN SHEEP SHEARING'
 Aquatint, published by Garrard, 1811, with inscription below
 image 46 x 76cm
 £200 - 300



134

Lot 134
 George Lewis, after Sir William Allan
 'THE SLAVE MARKET, CONSTANTINOPLE'
 Mixed method engraving, published 1842 by Alexander Reid & F G Moon
 plate mark 64 x 81cm, in a Victorian maple frame
 £100 - 150

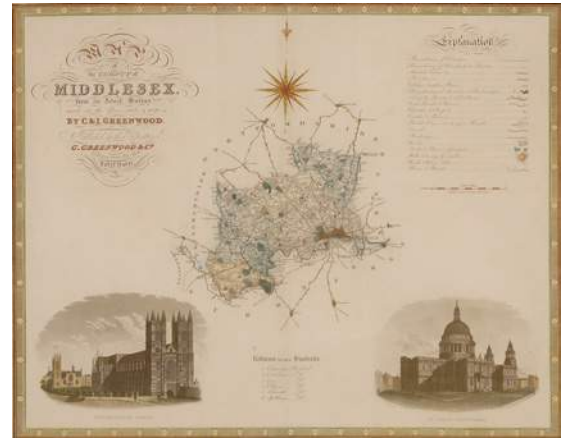
Lot 135
 *Antoine Blanchard
 (French, 1910-1988)
 PARIS STREET SCENE
 Signed l.r., oil on canvas
 34 x 48cm
 £1,000 - 1,500



135



136



137



138



140



139



141

Lot 136

A pair of brass ejector candlesticks, early 19th century, and eight further brass candlesticks, 18th/19th century, ejector sticks 18.5cm high (10) £100 - 200

Lot 137

A 'map of the county of Middlesex from an actual survey made in the years 1819 and 1820 by C & I Greenwood, published by the proprietor C Greenwood & Co., 13 Regent Street, Pall Mall, London', 'corrected and published July 4th 1829', with hand-coloured highlights and detail, image 52.5 x 64cm, framed £200 - 400

Lot 138

A collection of pewter items, including: three chargers, three tankards, two teapots, two bowls, a cake dish, a pair of candlesticks, and a small pair of brass chambersticks (qty.) £50 - 100

Lot 139

Two unusual bowls, formed from dried squash cases with applied silver-plated liners, 27 and 16cm diameter (2) £80 - 150

Lot 140

A modern Chinese vase table lamp, mounted on a wooden base, with shade, 46cm high £80 - 150

Lot 141

A modern brass twelve-branch hanging electrolier, with two tiers of scrolled lights, 97cm high £100 - 200



142

Lot 142
 An impressive George III mahogany breakfront bookcase, the moulded cornice over four glazed doors with arched astragals and fabric linings within fluted columns, the base with two panelled doors flanked by two banks of four long graduated drawers with original brass handles and fluted columns, on a plinth base,
 350cm wide
 51cm deep
 270cm high
 £2,500 - 5,000



Lot 143
 An early Victorian mahogany extending dining table, with eight leaves on turned and reeded legs and brass castors,
 435cm long (extended)
 145cm wide
 72cm high
 £1,000 - 2,000

143



144 part lot



145



146

Lot 144

A set of fifteen Chippendale-style mahogany single dining chairs, modern, with waisted pierced splats, overstuffed seats and chamfered square front legs (15)
£800 - 1,500

Lot 145

A mahogany pier table, 18th century, the later rouge marble top over a plain frieze and four cabriole legs with carved knees and claw and ball feet,
102cm wide
62cm deep
79.5cm high
£1,000 - 2,000

Lot 146

An early Victorian giltwood pier glass, surmounted by a shell, floral and scrolled crest over a moulded frame, the plate within a beaded border,
110cm wide
160cm high
£500 - 1,000

Lot 147

A Victorian mahogany Pembroke table, with a single frieze drawer on turned legs,
59cm long
£100 - 200

Lot 148

A George I-style oak lowboy, 20th century, having three drawers on shell carved cabriole legs to pad feet,
71cm wide
49.5cm deep
73cm high
£200 - 400

Lot 149

A George I-style mahogany lowboy, modern, with a single frieze drawer, over a shaped frieze on cabriole legs and pad feet,
73cm wide
41cm deep
70cm high
£200 - 400



147



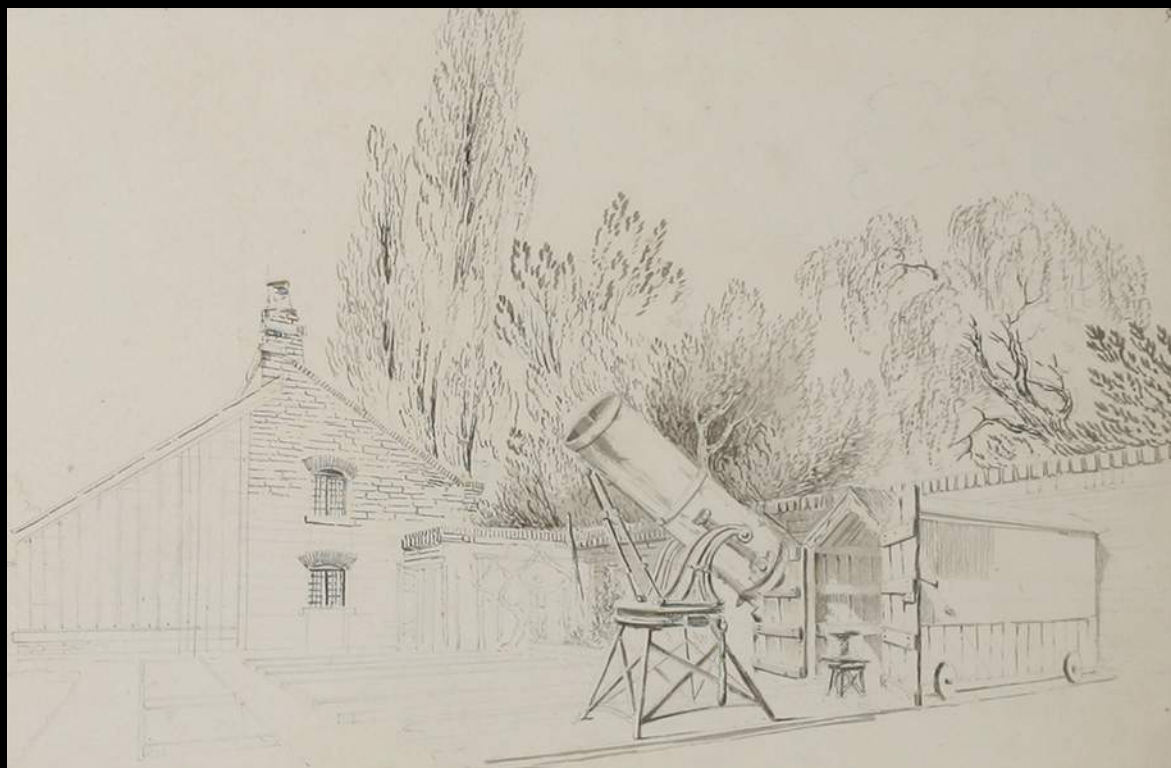
148



149

The Reception Hall

150-177



Lot 150
Jean Claude Nattes (1765-1822)
A TELESCOPE IN THE GARDEN AT
NORTH MYMMS
Pencil, pen and ink and grey wash
22 x 32cm
£200 - 300



Lot 151
Jean Claude Nattes (1765-1822)
THE BREWERY AT NORTH MYMMS
PLACE
Pencil, pen and ink and grey wash
22 x 32cm
£200 - 300



152



153



154

Lot 152

Henri-Joseph Harpignies (French, 1918-1916)

'LE CHEMIN CONDUISANT AU LAC'

Signed and dated '90 l.l., oil on canvas

40 x 30cm

£1,000 - 1,500

Lot 153

Daniel Macdonald (1821-1853)

STILL LIFE OF FISH, A CRAB, VEGETABLES AND POTS

Signed and dated 'Cork 1843' l.r., oil on canvas

71 x 91cm

£2,500 - 3,500

Provenance: Sotheby's London, 16 November 1988, lot 114 (£4,000).



155

Lot 154

Daniel van Heil (Flemish, 1604-1622)

THE BURNING OF TROY

Signed with initials l.r., oil on panel

48 x 65cm

£3,000 - 5,000

Provenance: Sotheby's, 20 April 1988, lot 123 (£3,000).

Lot 155

After William Henry Davis (1783-1865)

SHORT-HORNED OX

Chromolithograph, published 1856

image 52 x 68cm, in a Victorian maple frame

£100 - 150

Lot 156

Scott, Sir Walter: *Waverley Novels*; 89 Volumes of 90(?). Edinburgh, Cadell, 1829-1833. Cont. half leather; *rubbed* (89)
£400 - 600

Lot 157

GARNETT, Richard; Leon Vallée & Alois Brandl (eds.): *The Universal Anthology*; a collection of the best literature, ancient mediaeval and modern, with biographical and explanatory notes; Complete in 33 Volumes. Clarke Co., 1899. Limited edition "Edition des Amateurs", #54 of 250 copies. Small quarto, with illustrations on Japanese vellum the coloured frontispiece to each volume on Holland paper. Full Crimson morocco, with floral ornament in gilt to centre of each cover surrounded with gilt floral decoration; A BEAUTIFUL SET (33)
£1,000 - 1,500

Lot 158

Johnson, Samuel: *The works of the English poets, from Chaucer to Cowper*; 21 Volumes. J. Johnson, J. Nichols.. 1810. Contemporary full leather. Vg (21)
£400 - 600

Lot 159

Sowerby, James: *English Botany*, or coloured figures of British plants, with their essential characters, synonyms, and places of growth. Volumes 1-28, of 36 published. Printed for the author, 1790-1809. With numerous hand coloured plates (Not collated, but each volume looks complete). 4to. Original vellum backed grey boards and edges untrimmed; *spines chipped on five volumes*; *8 volumes with damp staining to spines (not affecting the inside)*; *occasional foxing*; *the plates are on the whole clean* (28)
£1,000 - 2,000





160



161

Lot 160

A Dutch delft blue and white vase, 18th century, of lobed ovoid form, decorated in the Chinese manner with panels of figures and vases of flowers, 25cm high
£150 - 300

Lot 161

Two Chinese blue and white ginger jars, Kangxi (1662-1722), one decorated with a floral and seaweed pattern, the second with two fan-shaped panels on a powder blue ground, 12 and 11.5cm high, and a Chinese blue and white baluster vase, 19th century, painted with exotic birds and flowering shrubs, 33cm high (3)
£300 - 500

Provenance: Ginger jars with Geoffrey Waters, London.



162

Lot 162

Two Chinese shallow bowls, Kangxi (1662-1722), painted all-over with flowering cherries, 39cm diameter (2)
£200 - 400

Provenance: With Geoffrey Waters, London.

Lot 163

A pair of Chinese blue and white plates, Kangxi (1662-1722), each decorated with a flowering shrub within a panelled border, 27cm diameter (2)
£200 - 400

Provenance: With Geoffrey Waters, London.

Lot 164

A pair of Chinese kraak porcelain blue and white plates, Kangxi (1662-1722), each decorated with a flowering shrub within a panelled border, 27cm diameter (2)
£150 - 300

Provenance: With Geoffrey Waters, London.



163



164

Lot 165

Three pieces of Chinese porcelain, Kangxi (1662-1722), a tea caddy and two chocolate pots, all with Imari-style decoration, caddy 10.5cm pots 12cm high (3)
£200 - 300

Provenance: With Geoffrey Waters, London.



165

Lot 166

A pair of Chinese porcelain shallow bowls, Qianlong (1736-1795), decorated with red enamel and gilt sprays within blue borders on floral moulded grounds, 21.5cm (2)
£200 - 400

Provenance: With Geoffrey Waters, London.



166

Lot 167

A pair of Chinese porcelain bowls, Kangxi (1662-1722), decorated in the Imari-style with shrubs within a fence, 22cm diameter (2)
£300 - 500

Provenance: With Geoffrey Waters, London.



167

Lot 168

A monumental modern Chinese baluster vase, 20th century, decorated with storks below a setting sun, 183cm high
£400 - 700



168



169

Lot 169
An oak dresser,
 18th century, with broad mahogany crossbanding, three frieze drawers and square scrolled front legs,
 166cm wide
 52cm deep
 82cm high
 £400 - 600

Lot 170
Two similar bobbin turned elbow chairs,
 basically 19th century, each with turned components supporting solid seats, one chair with square arms,
 96 and 100cm high (2)
 £200 - 400



170



171

Lot 171
A pair of Continental oak and walnut high back single chairs,
 17th century, the arched and carved crest rails over slat backs, panelled seats, carved and scrolled front legs united by scrolling stretchers,
 127cm high (2)
 £200 - 400



172

Lot 172
A George III mahogany breakfront bookcase,
 having a moulded dentil cornice over four reeded astragal glazed doors, enclosing adjustable shelves and four panelled doors, the central doors enclosing eight slides, on a plinth base,
 290cm wide
 46.5cm deep
 242cm high
 £2,000 - 4,000

Lot 173

A kingwood coffer fort (strong box), 17th/18th century, with extensive ornate brass strapwork and carrying handles, the hinged top enclosing a catch to release the drop front, which reveals two drawers, 48.5cm wide 28.5cm deep 28.5cm high £1,000 - 2,000



173

Lot 174

A pair of elm and ash high back Windsor chairs, modern, with saddle-shaped seats, crinoline stretchers and turned legs (2) £200 - 400



174

Lot 175

Two oak joined stools, 17th century and later, on turned legs, 59 and 51cm high (2) £150 - 250



175



173 open



176

Lot 176

A George III mahogany breakfront bookcase, the moulded cornice over four square astragal glazed doors, enclosing adjustable shelves, four panelled doors and a plinth base, 217cm wide 46cm deep 227cm high £1,000 - 2,000

Lot 177

A small Regency mahogany breakfront sideboard, with ebony stringing, having two central drawers within two deep drawers on six turned legs, 100cm wide 43cm deep 88cm high £300 - 500



177

The Study

178-187



Lot 178**Joseph Thors (1835-1898)**

A WOODED LANDSCAPE WITH A TIMBER WAGON, A FARMER AND HIS DOG AT A POOL IN THE FOREGROUND

Signed l.l., oil on canvas

102 x 76cm

£1,500 - 2,000



178

Lot 179**John Wootton (1682-1764)**

A COASTAL LANDSCAPE AT SUNSET, WITH FIGURES AND DOGS BY CLASSICAL RUINS IN THE FOREGROUND

Signed and dated 1752 l.l., oil on canvas

140 x 202cm

£10,000 - 12,000

Provenance: Christie's London, 7 July 1988, lot 43 (£18,000).



179



180



182



181 part lot



183

Lot 180

An extensive 'di Doccia of Florence' pottery part dinner service, hand-painted by Richard Ginori, to include:

- 32 dinner plates, 26cm,
- 21 dessert plates, 21cm,
- 32 sandwich plates, 19cm,
- 36 side plates, 16.5cm,
- 25 soup bowls, 19.5cm,
- 24 crescent-shaped salad plates,
- 12 square bowls, 14cm,
- 24 dessert bowls, 14cm,
- 23 tea cups,
- 57 saucers in two sizes,
- 13 tureens,
- 4 assiettes, 38cm long,
- 7 sauce boats with integral saucers,
- 9 cream jugs,
- a fish server, 58cm,
- 2 coffee pots and covers,
- 2 teapots and covers,
- 4 preserve pots and covers,
- 4 miniature tureens and covers, with integral bases,
- 4 egg cups (qty.)

£1,000 - 1,500

Lot 181

Three embossed brass, Nuremberg alms dishes, 42, 40.5 and 47cm, and another, 22.5cm diameter (4)
£300 - 400

Lot 182

A Dutch brass table candlestick, in the 18th century-style, with an associated three-branch candelabrum, with leaf cast sconces, 35cm high (2)
£80 - 120

Lot 183

Two Japanese famille verte and gilt decorated vases, 20th century, decorated with panels of leaves and flowers, 46 and 36cm high (2)
£60 - 100

Lot 184

A mahogany 'D' end dining table, early 19th century and later, the ends supported on turned pedestals above four swept reeded legs and brass castors, flanking a centre section on six ring turned and tapered legs, opening with a gateleg action to support the final two sections, 395.5cm long 137cm wide 71cm high £1,000 - 2,000



184

Lot 185

An oval mahogany drop-leaf table, 19th century and later, on turned legs, pad feet and a later gateleg action, 112cm wide 96cm open £200 - 300



185

Lot 186

An oak gateleg table, late 17th century, on bobbin turned legs, low stretchers and stump feet, 104cm wide 121cm open 73.5cm high £150 - 250



186

Lot 187

An oval oak drop-leaf table, 18th century, on turned legs and pad feet, 105cm wide top 107cm open 70cm high £150 - 250



187



Lot 188
Tyrolean School, 16th century
ST BLAISE PREACHING TO THE ANIMALS
Tempera and gold ground on panel
54 x 58cm
£10,000 - 20,000

The Morning Room

188-210



189

Lot 189

Follower of Anthonie Palamedes (Dutch, 1601-1673)

A CAVALRY SKIRMISH

Oil on panel

40 x 72.5cm

£800 - 1,200

Lot 190

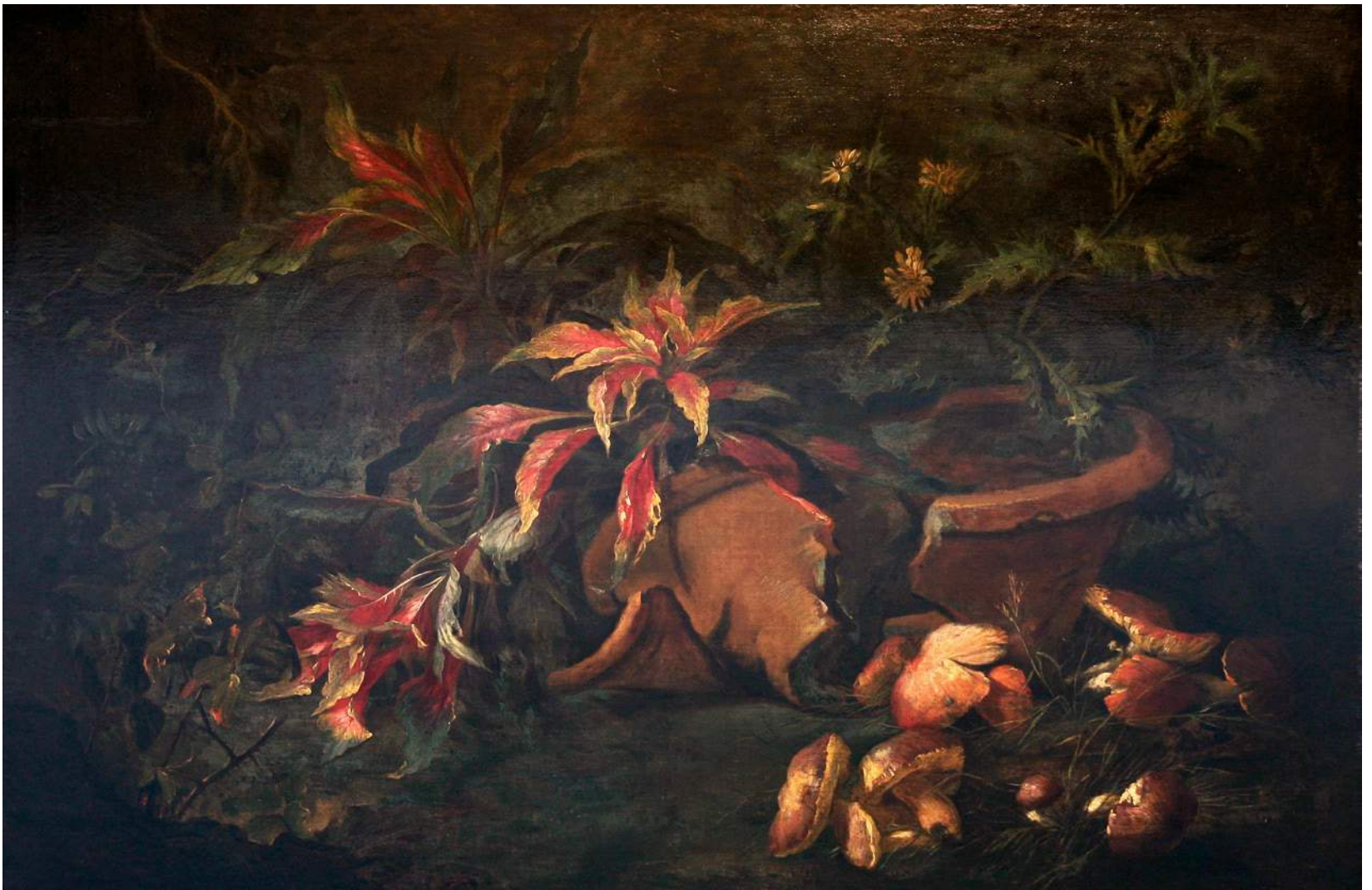
Niccolino Van Houbraken (Italian, 1660-1723)

STILL LIFE OF MUSHROOMS AND THISTLES AMONGST BROKEN EARTHENWARE POTS

Oil on canvas

92 x 125cm

£6,000 - 8,000

Provenance: A B de Vries, The Hague, before 1980;
Sotheby's London, 5 July 1989, lot 206 (£13,000).

190



191



192



193

Lot 191

John Clark and Matthew Dubourg, after Mornay
 'VUE DE CHAMPS DE MARS ET DU JARDIN D'ÉTÉ
 À ST PÉTERSBOURG';
 'VAC DU PALAIS DE MARBRE DANS LA GRANDE MILLIONE
 À ST PÉTERSBOURG'

Two hand-coloured aquatints, from 'Une année de
 Saint-Petersbourg...', published by Sallandrouse, Paris, 1812
 image 37.5 x 56cm (2)
 £600 - 800

Lot 192

Daniel Havell, after Henry Salt (1780-1827)
 A VIEW WITHIN THE PORT OF MONGHYR;
 J Bluck, after Henry Salt
 PAGODA AT TANJORE

Two hand-coloured aquatints, published by William Miller,
 1809
 image 41 x 58.5cm (2)
 £300 - 500

Lot 193

French School, 19th century
 AN ORNAMENTAL BRAZIER, FLANKED BY GRYPHONS WITHIN
 A BORDER OF RIBBON-TIED FLOWERS

Painting on glass
 87 x 96cm, in a fluted gilt frame
 £600 - 1,000



194



196



197



195



198

Lot 194
Two skillets,
18th century, probably gunmetal, the
handles with cast inscriptions,
15 and 12cm high, and
an iron floor-standing rushlight,
82cm high (3)
£150 - 300

Lot 195
A squat pedestal pewter candlestick,
18th century, on a raised circular foot,
initialled 'J.S.R.' and dated 1755,
15cm,
a squat pedestal pewter candlestick,
on a square base,
12.5cm, and
two London made pewter chargers,
18th century,
46 and 42cm (4)
£100 - 150

Lot 196
A collection of nine glass apothecary's
jars and stoppers,
c. 1900, with original labels,
largest 24cm high (18)
£80 - 120

Lot 197
Eleven coloured glass drug jars
and stoppers,
20th century, five blue and six green,
each with a gilt label,
21cm high (22)
£100 - 200

Lot 198
Two 17th century-style drug jars,
the wet jar of baluster shape with
polychrome decoration on a yellow
ground, the dry jar and cover of
waisted cylindrical shape on a blue
ground,
32 and 34cm high (3)
£100 - 200

Lot 199
A pair of Dutch-style brass
eighteen-branch electroliers,
103cm diameter (2)
£300 - 500



199 part lot



200 part lot



201

Lot 200
A set of four slender brass lamp standards, 20th century, on circular bases, 160cm high, and a pair of matching table lamps, 78cm high, all with shades (6)
£100 - 200

Lot 201
A large walnut cased desktop clock, barometer and barograph, 19th century, the case with a glazed front housing a cylindrical brass barograph (with drive from the clock movement) above a mercury tube thermometer, flanked by an eight-day brass clock with a silvered dial and an aneroid barometer, both signed 'Dollond of London', 68cm wide 21cm deep 42cm high
£800 - 1,200

Lot 202
A giltwood and gesso wall mirror, probably French, 18th century, the rectangular plate surmounted by a basket of trailing flowers, the apron worked with a central floral medallion flanked by leafy ribbons, 33cm wide 64cm high
£200 - 400

Lot 203
A pierced giltwood wall mirror, 18th century, the rectangular plate surmounted by a crowned heraldic finial flanked by cherubim, above a border with hounds, birds and scrolling leaf decoration, 31cm wide 56cm high
£200 - 400

Lot 204
A reproduction mahogany breakfront bookcase, in the 18th century style, with a dentil and teardrop cornice, over four astragal glazed doors, the base with four panelled doors on a plinth base, 204cm wide 36.5cm deep 213.5cm high
£400 - 600



202



203



204

Lot 205

A George III mahogany part dining table, having two sections with a gateleg action and turned legs and four further leaves, 369cm long approximately
137cm wide
£400 - 600

Lot 206

A set of twelve mahogany open armchairs, 20th century, in the 18th century style, with overstuffed backs and seats, the arms with leaf carved and scrolled terminals, above cabriole front legs with bold leaf carved knees and pad feet (12)
£800 - 1,600

This matches with lot 207.

Lot 207

A set of nine mahogany open armchairs, mid 20th century, in the 18th century style, with overstuffed backs and seats, the arms with leaf carved and scrolled terminals, above cabriole front legs with bold leaf carved knees and pad feet (9)
£600 - 1,200

This matches with lot 206.



205



206 part lot

207 part lot

Lot 208

A solid mahogany Pembroke table, early 19th century, the rectangular top with a single frieze drawer on ring turned legs and brass castors, 94cm wide
50cm deep
71cm high
£100 - 200

Lot 209

A mahogany Pembroke table, 19th century, the rectangular top above a single end frieze drawer to offset square legs and square fluted block feet, 73.5cm wide
97cm deep
88cm high
£100 - 200

Lot 210

A George III mahogany log bucket, of coopered construction, brass-bound below a brass swing handle, together with a tin liner, 39cm high
37.5cm diameter
£200 - 400



208



209



210



Silver

211-269

Lot 211

A pair of George II silver table candlesticks, John Café, London, 1755, each on an hexagonal base cast with stylised shells, a baluster knopped stem rising to plain socket and detachable shell nozzle, each marked under base and on socket, 22.5cm, 36.5oz (2)
£1,000 - 2,000



211

Lot 212

A George II Scottish bullet-shaped silver teapot, George Cooper, Aberdeen, c.1735, with a plain angular spout, the cover applied with an acanthus hinge and cone finial, ivory insulators to scroll handle, 15cm high, 19.5oz
£800 - 1,500



212

Lot 213

An Elizabeth II cased silver cruet set, probably Alfred E Jones, Birmingham, 1989, comprising: two mustard pots and two salt cellars with blue glass liners, two pepper pots, and four spoons, the set replaced with a later white metal spoon, the case 20.5cm, 9oz excluding glass liners
£100 - 150



213

Lot 214

A Spanish silver salver, c.1800, of shaped circular form, with a moulded border, on four ball and claw feet, 25.5cm diameter, 26oz
£200 - 300



214

Lot 215

A pair of close-plated three-light candelabra, each on a circular base, rising to a baluster stem and a spool-shaped sconce, 41cm long, loaded (2)
£100 - 200



215

216

Lot 216

A pair of sheet silver two-light table candelabra, Sheffield, 1834, each on a circular spreading base rising to a baluster stem, the detachable branches terminating in vase-shaped sconces, 30cm tall, loaded (2)
£500 - 700



217

Lot 217

A George III silver meat dish, William Fountain, London, 1802, of shaped oval form with a gadrooned border and an engraved crest, 52cm wide, 76oz
£800 - 1,500



218



219



221

Lot 218
An Elizabeth II silver salver,
maker's mark 'AT',
London, 1941,
of shaped circular form, the
moulded border interrupted with
stylised shells, on three scroll feet,
27cm diameter, 19oz
£150 - 200

Lot 219
Eight French white metal finger bowls,
maker's mark 'J.G.', 20th century,
each of partly fluted circular form, on a conforming foot,
together with two matching silver-mounted wine coasters,
each with a turned wooden base,
the bowls 11cm, the coasters 13.8cm diameter, 40oz excluding
coasters (10)
£400 - 600



220



224

Lot 220
Two George III silver pepperettes,
Solomon Hougham, London, 1802,
one of fluted vase form with a cover,
the other with a plain body and beaded borders,
Charles Aldridge & Henry Green, London, 1784,
10 and 9.5cm high, 4oz (2)
£50 - 70

Lot 221
A set of three George II silver salt cellars,
Richard Green, London, 1732,
each of circular form, chased with floral swags, on three feet with
lion masks,
8cm diameter, 18oz (3)
£150 - 200

Lot 222
An electroplated two-handed serving tray,
of shaped oval form, on four cast foliate scrolled feet,
70cm wide across handles
£50 - 70

Lot 223
Six Sheffield plate dish warmers,
c.1800,
each of oval form with a gadrooned border, crested, one with
motto 'UNG LE SERVIRATI', with ring handles,
23cm diameter (6)
£200 - 300

Lot 224
A Sheffield plate venison dish and
cover,
c.1820,
the base of oval form on four
wooden ball feet, with side handles,
the detachable cover surmounted
with a cast acorn handle and
engraved 'VIGILANS ET PROMITUS',
62cm wide
£400 - 600



224 detail



222



223

Lot 225

A Sheffield plate salver,
c. 1830,
inscribed 'Toujours en avant' to the centre, surrounded by c-scrolls, shells
and flowers on a matt ground, within a cast shell and flowerhead border,
raised on three acanthus shell supports,
61cm diameter
£100 - 200



225

Lot 226

Spare lot

Lot 227

A Sheffield plate salver,
c. 1830,
inscribed 'Semper Idem' to the centre, surrounded by flowering scrolls
on a matt ground, within a cast vine border, raised on four acanthus shell
supports,
61cm diameter
£100 - 200



227

Lot 228

A Sheffield plate salver,
c. 1830,
inscribed 'Prest D'Accomplir', within scrolling flowering foliage on a matt
ground and vine border, raised on three acanthus shell supports,
61cm diameter
£100 - 200



228

Lot 229

Spare lot

Lot 230

A Sheffield plate six-cup egg cruet,
c. 1800,
the hexagonal frame on six ball supports, surmounted with central salt,
gilt interiors,
15cm high
£100 - 200



230

Lot 231

A set of Victorian Old English pattern table silver,
John Bodman Carrington, London 1899-1901,
with octagonal pistol handles,
comprising:
33 table knives,
18 dessert knives,
1 fish knife with silver blade
a pair of fish servers,
3 carving knives with original steel blades,
4 carving forks,
12 tablespoons,
36 table forks,
24 dessert spoons,
24 dessert forks,
1 teaspoon,
4 sauce ladles,
2 serving spoons,
1 soup ladle,
crested,
and miscellaneous silver items: 2 mustard spoons, 2 sauce ladles,
221oz excluding implements with steel blades (qty.)
£2,000 - 3,000



231 part lot



232



234



235



233



236 part lot



237 part lot

Lot 232
An Asian silver and niello worked pedestal teapot and cover, late 19th century, 26cm high (2)
£100 - 300

Lot 233
Five pairs of Elizabeth II wine coasters, Padgham & Putland, London, 1992, each of circular form on turned wooden bases, 14cm diameter (10)
£1,000 - 2,000

Lot 234
An Elizabeth II silver spill holder, Padgham & Putland, London, 1992, the rim pierced with a 'G' motif, 11cm high, 11oz approximately
£100 - 200

Lot 235
A George V silver salver, Thomas Bradbury & Sons, London, 1911, of shaped circular form within a moulded border, on three scrolled feet, 36cm diameter, 43oz
£400 - 600

Lot 236
A set of twenty-nine Elizabeth II silver, graduated 'G' motif, menu holders, Padgham & Putland, London, 1987 & 1991, each pierced cast motif on a rectangular base, 7cm diameter (29)
£600 - 800

Lot 237
A set of forty-eight Elizabeth II silver place card holders, Padgham & Putland, London, 1987, each pierced cast motif on a rectangular base, 4.5cm (48)
£1,000 - 1,500

Lot 238
A group of miscellaneous electroplated and white metal items, comprising: a three-piece tea service, a teapot, a filigree basket of shaped circular form, and a square basket with simulated weave design, highest 22.5cm (6)
£70 - 100

Lot 239
A pair of turned mahogany wine coasters, with central silver buttons, Piers Hart, London, 1992, each of circular form, together with three smaller examples, 16 and 11.5cm diameter (5)
£300 - 400



238



239



240



241



242



243



244



245



246



247

Lot 240

A modern silver goblet, Robert Welch, London, 1990, engraved 'Sir P Girolami, Director 1968-1994', the spirally fluted bowl with a trumpet shape stem and foot, a hammer finish, gilt interior, armorial and motto, 17cm high, 8.7cm diameter, 10oz £300 - 400

Lot 241

A modern silver goblet, Gerald Benney, London, 1987, engraved 'Dr D Jack CBE, Director 1978-1987', the thistle-shaped bowl raised on a circular foot, inscribed under the foot, 20.7cm high, 7.4cm diameter, 9oz £300 - 400

Lot 242

A modern silver goblet, Brian Asquith, Sheffield, 1992, engraved 'Lord R E G Howe, Director 1991-1996', the ogee bowl engraved with four motifs, the reverse engraved 'G.H. JANUARY 1991', raised on an octagonal hollow stem, with a central blue core and a circular foot, gilt interior, 18cm high, 8.3cm diameter, 17oz £300 - 400

Lot 243

A modern silver goblet, Tom Tudor-Pole, London, 1990, engraved 'Mrs J M Raisman CBE, Director 1892-1990', the tapering cylindrical bowl applied with four pairs of crossed golf clubs, initialled 'J.M.R.', gilt interior, 18.3cm high, 9.1cm diameter, 11.5oz £100 - 200

Lot 244

A modern parcel gilt silver goblet, Stuart Devlin, London, 1987, engraved 'Sir R Arculus KCMG KCVO, Director 1883-1991', the funnel-shaped bowl with a matted surface over a circular foot with jagged decoration, 20.5cm high, 8.1cm diameter, 9.5oz £300 - 400

Lot 245

A modern parcel gilt silver goblet, Padgham & Putland, London, 1987, engraved 'Mr C B Newcomb, Director 1983-1988', the flared bowl with an everted rim and engraved with a view of Rochester Castle, gilt interior, 20cm high x 7.7cm diameter, 14oz £200 - 300

Lot 246

A modern silver goblet, Eric G Clements, Wakely & Wheeler, London, 1990, engraved 'Sir R Dahrendorf KBE FBA, Director 1984-1992', the waisted cylindrical sides with a hammered finish, on a collet foot, inscribed 'Ralf Dahrendorf, September, 1987', 11.9cm high, 7.7cm diameter, 11oz £200 - 300

Lot 247

A modern silver goblet, Anthony G Elson, London, 1993, engraved 'Mrs A A Armstrong, Director 1991-1997', the circular bowl chased with horses, deer and quail, on a trumpet foot applied with cattle, a lion and an eagle, gilt interior, 15.5cm high, 9.8cm diameter, 11oz £300 - 400



248

Lot 248
A modern silver goblet, Tom Tudor-Pole, London, 1987, engraved 'Sir Alistair Frame, Director 1895-1990', the funnel-shaped bowl raised on a double domed circular foot, inscribed 'Sir Alistair Frame', gilt interior, 20.8cm high x 9.3cm diameter, 14oz £300 - 400



249

Lot 249
A modern silver goblet, Anthony G Elson, London, 1988, engraved 'Mr M Fertoni, Director 1986-1991', the circular bowl with a hammered finish, on a lapis lazuli knob and trumpet stem and foot, gilt interior, 16cm high, 7.3cm diameter, 10.5oz £300 - 400



250

Lot 250
A modern silver goblet, Sarah Jones, London, 1993, engraved 'Professor Sir R Southwood, FRS, Director 1992', the cylindrical bowl applied with crawling beetles between shaped branches, the base applied with three grouse pecking a woodland shrub base, 16cm high, 6.6cm diameter, 12.5oz £200 - 300



251

Lot 251
A modern silver goblet, Anthony Elson, London, 1988, the circular bowl with a hammered finish, on a tapering green hardstone stem, lion monopodia and spreading foot incorporating the initials 'D.J.R.F.', gilt interior, 15cm high, 7.8cm diameter, 14.5oz £300 - 400

Lot 249
A modern silver goblet, M A B, London, 1987, engraved 'Mr J J Ruvane Jnr, Director 1986-1988', the hammered funnel-shaped bowl with an everted rim set over a single gilt pellet, raised on textured stem, the base initialled 'JJR JNR', gilt interior, 18.5cm high x 8.4cm diameter, 9oz £300 - 400

Lot 251
A modern silver goblet, David Thomas, London, 1988, engraved 'Dr H McCorquodale, Director 1987-1990', the cylindrical bowl engraved with a stag to one side, the stem applied with thistles on a domed foot, gilt interior, 13.8cm high, 6.3cm diameter, 8.5oz £300 - 400

Lot 253
A modern silver goblet, Anthony G Elson, London, 1991, engraved 'Dr E Mario, Director 1988-1993', the cylindrical bowl with chased flaming decoration, engraved with a monogram above a pearl and mineral filled stem, the base further engraved 'GGH', gilt interior, 18.5cm high, 7cm diameter, 9.5oz £300 - 400

Lot 255
A modern silver goblet, Anthony Elson, London, 1990, engraved 'Mr J L Ferguson, Director 1989-1955', the cylindrical funnel bowl engraved with a coat of arms, and motto ARTE ET ANIMO, the reverse further engraved 'JLF', the bowl on a pierced foliate wrythen stem, on a coral insect, 18cm high, 6.7cm diameter, 11oz £300 - 400



252



253



254



255

Each lot is subject to Buyer's Premium at 26.4% inclusive of VAT @ 20%
Lots marked * will be subject to an additional fee - please see ARR details on page 163



256

Lot 256

A modern silver goblet, Padgham & Putland, London 1990, engraved 'Dr F B Humer, Director 1989-1994', the tapering cylindrical bowl on a spiral ribbed stem and spreading foot, gilt interior, 20.2cm high, 7.7cm diameter, 14oz £200 - 300

Lot 257

A modern parcel gilt goblet, Rod Kelly, London, 1991, engraved 'Mr H Konishi, Director 1990-1995', the elongated funnel bowl chased with entwined horse's head decoration, raised on a square splayed knob stem and a domed circular foot, 16.5cm high, 7.4cm diameter, 16oz, loaded £300 - 500

Lot 258

A modern parcel gilt silver goblet, Brian Asquith, Sheffield, 1992, engraved 'Dr C A Sanders, Director 1990-1995', the conical bowl suspended between parcel gilt twin supports on a circular ribbed edge foot, the reverse engraved 'CHARLES A SANDERS M.D. JANUARY 1990', gilt interior, 18cm high, 8.1cm diameter, 16oz £300 - 400



261



257

Lot 259

A modern silver cup and cover, Padgham & Putland, London, 1989, 'The Glaxo International Challenge Cup', the blue glass bowl mounted with pierced reducing 'G' motifs, applied with an inscription plate of the winners' names from 1989-1993, the detachable cover with a ball finial, 28cm high, 11.6cm diameter, loaded £300 - 500

Lot 260

A modern silver goblet, Leslie G Dunbin, London, 1991, engraved 'Mr A M Pappas, Director 1990-1994', the circular bowl with a hammered finish, raised on a rampant lion, gilt interior, 16cm high, 8.2cm diameter, 19oz £300 - 500

Lot 261

A modern silver goblet, Brian Asquith, Sheffield, 1992, engraved 'Mr D J Derx CB, Director 1991-1997', the funnel-shaped bowl raised on a faceted and chased stem and foot with a scalloped edge, the reverse engraved 'DJD MARCH 1992', 18cm high, 8.4cm diameter, 17.5oz £300 - 400



262



258

Lot 262

A modern parcel gilt silver goblet, Tom Tudor-Pole, London, 1993, engraved 'Mr S Lance, Director 1993-1997', the tapering funnel-shaped bowl with a hammered finish, raised on a swelling stem and a circular domed foot, gilt interior, 13.6cm high, 8.9cm diameter, 13oz £300 - 400

Lot 263

A modern silver goblet, Wakely & Wheeler, London, 1995, engraved 'Sir Colin Ross Corness, Director 1994-1997', the tapering cylindrical bowl raised on a tapering stem and circular foot with a double reeded edge, the base inscribed 'SIR COLIN ROSS CORNESS', 20cm high, 8.6cm diameter, 20oz £300 - 400

Lot 264

A modern silver beaker, Anthony G Elson, London, 1995, engraved 'The Rt Hon Lord RLP Kingsdown PC, Director 1993-1997', the tapering cylindrical body chased with St George slaying the dragon, beneath a cricket ball and a seated figure of Britannia holding a cricket bat, gilt interior, 11.7cm high, 8.5cm diameter, 10oz £300 - 400



263



259



260



264



265

Lot 265
 A miscellaneous group of white metal items, comprising:
 a cake stand,
 a rectangular tray,
 a two-handled tray,
 a circular salver,
 two salvers with pierced borders,
 cake stand 38cm high (6)
£100 - 200



266 part lot

Lot 266
 Ten wooden gavels with applied 'G' motifs,
Padgham & Putland, London, 1989,
 each on an oval stand, each stand and gavel applied with a pierced silver reducing 'G', in a fitted case,
 28cm wide (10)
£800 - 1,200

Lot 267
 Seven wooden gavels with applied 'G' motifs,
Padgham & Putland, London, 1989,
 each on an oval stand, each stand and gavel applied with a pierced silver reducing 'G', in a fitted case,
 28cm wide (7)
£500 - 700

Lot 268
 Seven wooden gavels with applied 'G' motifs,
Padgham & Putland, London, 1989,
 each on an oval stand, each stand and gavel applied with a pierced silver reducing 'G', in a fitted case, *one lacking,*
 28cm wide (7)
£500 - 700



267 part lot



268 part lot



Lot 269

A pair of impressive George IV silver five-light candelabra with royal arms,

Charles and John Fry II, London, 1824,

the shaped circular bases, the baluster knopped stems and baluster sconces richly cast and chased with rocaille and floral ornament, the guilloché stems above boar chased knops, and below masks, rising to detachable branches cast and chased with scrolling acanthus, the central knobs further applied with acanthus, marked on bases and detachable branches, each with a royal coat of arms,

74cm high x 46cm wide (2)

£15,000 - 20,000

George III had seven sons, however, from an evidential point of view there are only five who could have owned these candelabra, his eldest son, George, had succeeded to the throne as King George IV in 1820 and his fourth son, Edward Duke of Kent, died in the same year. The difficulty in assigning ownership of these candelabra to one of the five surviving sons arises when examining the royal cadency mark of the label of three points modelled on the shoulders of the lion and unicorn supporters to the arms. These should ordinarily be charged with devices that would identify the prince concerned. Royal cadency marks should also appear on the arms and about the neck of the lion in the crest. In the present example, the label is omitted altogether on the arms and does not appear to be shown around the neck of the crest. Undoubtedly this is an error or omission by the silversmith at the time.

As a point of interest, all versions of the royal arms used by members of the royal family, save for the sovereign, are not granted by the Kings of Arms, but are assigned by Royal Warrant, generally when they reach their majority, and are then recorded in the Official Records of The College of Arms. The Royal Warrant would also specify the devices to be charged upon the three-pointed label.





Tapestries, Rugs and Carpets

300-331

THE TAPESTRIES AT NORTH MYMMS PARK

North Mymms Park was acquired by Walter Hayes Burns (1838-1897) in 1893. Walter Burns was the second son of William Burns of New York by his wife, Mary Leaming Fisher of Philadelphia. He was a partner of the bankers, J S Morgan & Co., London, and in 1867 married Mary, daughter of Junius Spencer Morgan, senior partner of the bank, and his wife, Juliet, daughter of the Rev John Pierpont. Walter Burns was therefore fortunate in having for a brother-in-law J Pierpoint Morgan, one of the outstanding collectors of works of art of his time and a great patron and benefactor.

North Mymms Park was extensively remodelled and refurbished by Mr Burns before his death in 1897 and many of the contents were acquired with the advice of J Pierpont Morgan, in particular, the tapestries, with many of those he acquired in his lifetime being given to the Metropolitan Museum in New York. The North Mymms estate passed eventually to Walter Burns' grandson, Major-General Sir George Burns KCVO CB DSO, and was sold by him in 1979 when a sale of the contents was held by Christie's on the premises (25 September 1979). Most of the tapestries were then bought by the purchasers of the estate, with the exception of one of the three Venus tapestries and one of the Julius Caesar set, which were both sold to another buyer, and have since remained at North Mymms through various subsequent changes of ownership.

The tapestries at North Mymms are principally Brussels, mid-16th century, comprising three separate series: the five Hercules tapestries, the (three) Venus tapestries and the set of (eight) tapestries from the story of Julius Caesar. All three relate to corresponding sets in the Spanish State Collection, one of the foremost collections of 16th century tapestries. In addition, there is a pair of Florentine 'Seasons' tapestries of c.1600, with their broad and exuberant borders typical of Italian tapestries of that period, and two later Brussels so-called 'Tenier' pastoral scenes.

Bibliography: Arthur Oswald – 'North Mymms Park', Country Life, 13 and 20 January 1934. Illustrations of the Entrance Hall and the Jacobean Room (now the Dining Room) show these two rooms hung with pictures, but other illustrations of the South Entrance Hall (now called the High Gallery) and the Long Gallery show most of the tapestries hanging there in the same position as at present. The tapestries were then described as follows:

The tapestries – which along with many other treasures in the house, came to the late Mrs Burns from her brother, Mr Pierpont Morgan, comprise portions of two Brussels sets of the second half of the 16th century. The two largest come from a series illustrating 'The Story of Venus and Cupid' of which there is a set of six in the Royal Collection in Madrid. The other set consists of five tapestries from a 'Labours of Hercules' series, with an odd panel showing Venus rescuing Aeneas from Dimode (actually en suite with the Venus and Cupid tapestries). These are rather later than the Venus and Cupid pair, and one of them bears a mutilated mark consisting of two 'B's back to back.



WEDNESDAY 18 APRIL

Lots 300-565



LOTS 300-304

AN IMPORTANT PART SET OF FIVE BRUSSELS TAPESTRIES FROM 'THE LABOURS OF HERCULES' SERIES

Lot 300

A Brussels mythological tapestry,

The Labours of Hercules (1): Hercules and Antaeus,

probably mid-16th century, in the manner of Bernard van Orley, the eleventh labour of Hercules, showing him lifting Antaeus and squeezing the life out of him, watched by Iolaus, the background with subsidiary scenes including Hercules, Cacus and the Stymphalian birds, within en suite borders,

11ft high x 12ft wide (335 x 366cm)

£10,000 - 15,000

Provenance: By repute, the Pallavicino Family, by descent to Marchese Serra, Palazzo Verde, Genoa;

from whom purchased by J Pierpont Morgan;

then gifted to Walter Hayes Burns;

Christie's North Mymms Park, September 1979, lot 502.

The Eleventh Labour of Hercules was the Fetching of the Golden Apples of the Hesperides. These had been given to Hera by Ge and entrusted to the keeping of the Hesperides and the dragon Ladon in the country of the Hyperboreans. In his quest, Hercules encountered Antaeus, a Libyan giant, whose strength derived from contact with his mother Ge, goddess of the earth. When strangers came to his kingdom, he would wrestle with them, and if thrown, would gather renewed strength from contact with the ground. Realising this, Hercules lifted Antaeus off the ground and squeezed the life out of his body in a tight hug.



Lot 301

A Brussels mythological tapestry,

The Labours of Hercules (2): Hercules and Cacus,

probably mid-16th century, in the manner of Bernard van Orley, the tenth labour of Hercules, on the left background, are subsidiary events from the eleventh labour, with the Hesperides guarding the Golden Apples, assisted by the dragon Ladon, to the right Hercules is lifting Antaeus and squeezing him to death, Brussels town mark to bottom left, within an en suite border,

11ft high x 14ft 5ins wide (335 x 449cm)

£10,000 - 15,000

Provenance: By repute, the Pallavicino Family, by descent to Marchese Serra, Palazzo Verde, Genoa;
from whom purchased by J Pierpont Morgan and gifted to Walter Hayes Burns;
Christie's, North Mymms Park, September 1979, lot 501.

The tenth Labour of Hercules was the Capture of the Oxen of Geryones in Erythia. Many attempts were made to deprive Hercules of the oxen, notably by Cacus, a giant who lived in a cave on Mt. Aventius. Cacus stole some of the cattle and attempted to conceal their traces by dragging them backwards by their tails into the cave. As the other cattle passed the cave, those within started to bellow and were thus discovered, whereupon Cacus was slain by Hercules.



Lot 302

A Brussels mythological tapestry,

The Labours of Hercules (3): Hercules and the Stymphalian Birds,

probably mid-16th century, in the manner of Bernard van Orley, the sixth labour of Hercules, who is shown pointing a bow and arrow at the birds on the ground, Brussels town mark,

12ft high x 10ft x 3ins (366 x 312cm)

£10,000 - 15,000

Provenance: By repute, the Pallavicino Family, by descent to Marchese Serra, Palazzo Verde, Genoa;
from whom purchased by J Pierpont Morgan and gifted to Walter Hayes Burns;
Christie's North Mymms Park, September 1979, lot 500.

After Hercules returned from his success in the Augean stables, Eurystheus devised an even more difficult task. For the sixth labour, Hercules was to drive away an enormous flock of birds which gathered at a lake near the town of Stymphalos.

Arriving at the lake, which was deep in the woods, Hercules had no idea how to drive the huge gathering of birds away. The goddess, Athena, came to his aid, providing a pair of bronze krotala, noise-making clappers similar to castanets. These were no ordinary noise-makers. They had been made by an immortal craftsman, Hephaistos, the god of the forge.

Climbing a nearby mountain, Hercules clashed the krotala loudly, scaring the birds out of the trees and, as they took flight, he shot them with a bow and arrow.



303

Lot 303

A Brussels mythological tapestry, The Labours of Hercules (4): Hercules wrestling with the Nemean Lion, probably mid-16th century, in the manner of Bernard van Orley, the first labour of Hercules, the background with subsidiary scenes including Hercules receiving the commands of Eurystheus and Hercules using the fork of a tree to skin the lion, with an en suite border and the Brussels town mark, 12ft x 12ft 8in (366 x 387cm) **£10,000 - 15,000**

Provenance:

By repute the Pallavicino Family, by descent to Marchese Serra, Palazzo Verde, Genoa; from whom purchased by J Pierpont Morgan and gifted to Walter Hayes Burns; Christie's North Mymms Park, September 1979, lot 499.

After Hercules, in a fit of madness, had slain his wife and children, the Delphic Oracle commanded him, in punishment for his crime, to go to King Eurystheus and perform whatever tasks might be demanded of him. The first of the twelve Labours of Hercules was to bring him the skin of the Nemean Lion which Hercules strangled with his bare hands. Future episodes in the series show Hercules wearing the lion skin.



304

Lot 304

A Brussels mythological tapestry, The Labours of Hercules: (5) Hercules and Atlas, probably mid-16th century, possibly the work of Bernard van Orley, Hercules is shown supporting the globe with Atlas seated beside him and Iolaus standing to the left, the background with subsidiary scenes including the fourth labour of Hercules and the capture of the Erymanthian Boar, within an en suite border, 12ft high x 17ft wide (366 x 518cm) **£10,000 - 20,000**

Provenance:

By repute the Pallavicino Family, by descent to Marchese Serra, Palazzo Verde, Genoa; from whom purchased by J Pierpont Morgan and gifted to Walter Hayes Burns; Christie's North Mymms Park, September 1979, lot 503.

In the course of his quest for the Golden Apples of the Hesperides, Hercules sent Atlas to fetch them and, in the meantime, agreed to bear the weight of heaven for him. On his return with the Apples, Atlas refused to re-take the burden on his shoulders, however, Hercules contrived to gain possession of the Apples and departed.

LOTS 305-310

THE STORY OF JULIUS CAESAR AND CLEOPATRA

A set of six (part of eight) Brussels historical tapestries, c.1560, all with an unidentified weaver's mark, woven with the history of Caesar. In four-sided floral borders with mythological and allegorical figures; the upper borders with a central mask in a cartouche supported by seated children and the corners with prison scenes, that on the left depicting Roman Charity (Cimon and Pero) and the other, a similar scene, perhaps representing the deeds of 'noble women'; the left side borders with a salamander, a female figure with a shield (perhaps Fortitude), Diana and Endymion resting from the chase, and a bearded sage with a kneeling woman; the right with an ostrich, a female figure holding a golden chain (Temperance or Prudence), Paris, Venus and Cupid, and a woman carrying a bearded warrior; the lower borders with David and Bathsheba.



Lot 305

A Flemish historical tapestry,
The Story of Julius Caesar (1),
probably 16th century, depicting
the Enthronement of Caesar and
Cleopatra,

11ft 2in high x 8ft x 6in wide
(339 x 259)

£4,000 - 6,000

Provenance:

By repute, the Pallavicino Family,
by descent to Marchese Serra,
Palazzo Verde, Genoa;
from whom purchased by
J Pierpont Morgan and gifted to
Walter Hayes Burns;
Christie's North Mymms Park,
September 1979, lot 508.



306

Lot 306

A Flemish historical tapestry, **The Story of Julius Caesar (2)**, probably 16th century, Mark Antony and Cleopatra at the Battle of Actium, the opposing fleets in the background, *unidentified weaver's mark lower right*,

11ft 2in high x 11ft wide (339 x 335cm)

£4,000 - 6,000

Provenance: By repute, the Pallavicino Family, by descent to Marchese Serra, Palazzo Verde, Genoa; from whom purchased by J Pierpont Morgan and gifted to Walter Hayes Burns; Christie's North Mymms Park, September 1979, lot 511.



307

Lot 307

A Flemish historical tapestry, **The Story of Julius Caesar (3)**, probably 16th century, depicting Cleopatra kneeling in homage to Caesar,

11ft 2in high x 12ft 9ins wide (339 x 390cm)

£10,000 - 15,000

Provenance: The Pallavicino Family, by descent to Marchese Serra, Palazzo Verde, Genoa; from whom purchased by J Pierpont Morgan; Christies North Mymms Park, September 1979, lot 506.

In BC 47 Cleopatra, having been dethroned, was preparing to enter Egypt to regain her throne at the same time as Caesar who was in pursuit of his rival Pompey. Her charms gained her the support of Caesar as an ally.



Lot 308

**A Flemish historical tapestry,
The Story of Julius Caesar (4),**

probably 16th century, depicting Mark receiving the victor's toga, a battle scene in the background, *unidentified weaver's mark lower right*,
11ft 2in high x 8ft 5in wide (339 x 256cm)

£10,000 - 15,000

Provenance: By repute the Pallavicino Family, by descent to Marchese Serra, Palazzo Verde, Genoa;
from whom purchased by J Pierpont Morgan and gifted to Walter Hayes Burns;
Christie's North Mymms Park, September 1979, lot 505.

This tapestry is an exact repetition of the Madrid tapestry (see Junquera de Vega - op.cit., Serie 117 'Panos sueltos', No. III) called Departure of a Warrior ('Despedida de un guerrero'). Both carry the same weaver's mark.



309

Lot 309

**A Flemish historical tapestry,
The Story of Julius Caesar (5).**

probably 16th century, depicting Mark Antony offering to Caesar the royal diadem, *unidentified weaver's mark lower right*, 11ft 2in high x 15ft 3in wide (339 x 464cm) **£10,000 - 15,000**

Provenance: By repute the Pallavicino Family, by descent to Marchese Serra, Palazzo Verde, Genoa; from whom purchased by J Pierpont Morgan and gifted to Walter Hayes Burns; Christie's North Mymms Park, September 1979, lot 509.

Traditionally in BC44, Julius Caesar, by then possessing the supreme power of royalty, wished to obtain the title of king. Mark Antony accordingly offered him the diadem in public at the festival of the Lupercalia, but Caesar, sensing that this was not favourably received by the people, declined the honour.



310

Lot 310

**A Flemish historical tapestry,
The Story of Julius Caesar (6),**

probably 16th century, depicting the meeting of Caesar and an eastern potentate, perhaps the submission of Pharasmanes after the battle of Zela, *unidentified weaver's mark lower right*, 11ft 2in high x 11ft wide (339 x 335cm) **£10,000 - 15,000**

Provenance: By repute the Pallavicino Family, by descent to Marchese Serra, Palazzo Verde, Genoa; from whom purchased by J Pierpont Morgan and gifted to Walter Hayes Burns; Christie's North Mymms Park, September 1979, lot 510.

It was after his defeat of Pharasmanes in 47BC that Caesar informed the senate of his victory in the words 'Veni, Vidi, Vici'.



311

Lot 311**A Flemish tapestry,****The Story of Romulus and Remus (7),**

late 16th/early 17th century, attributed to Jakob Geubels the Elder, depicting Romulus presenting to his grandfather, Numitor, King of Alba Longa, the severed head of his usurper brother, Amulius, shown in a four-sided compartmental floral border, with illustrations of Latin proverbs and allegorical and mythological figures,

size approximately 10ft 5in high x 12ft 6in wide (317 x 380cm)

£8,000 - 12,000

Provenance: Christie's, London.

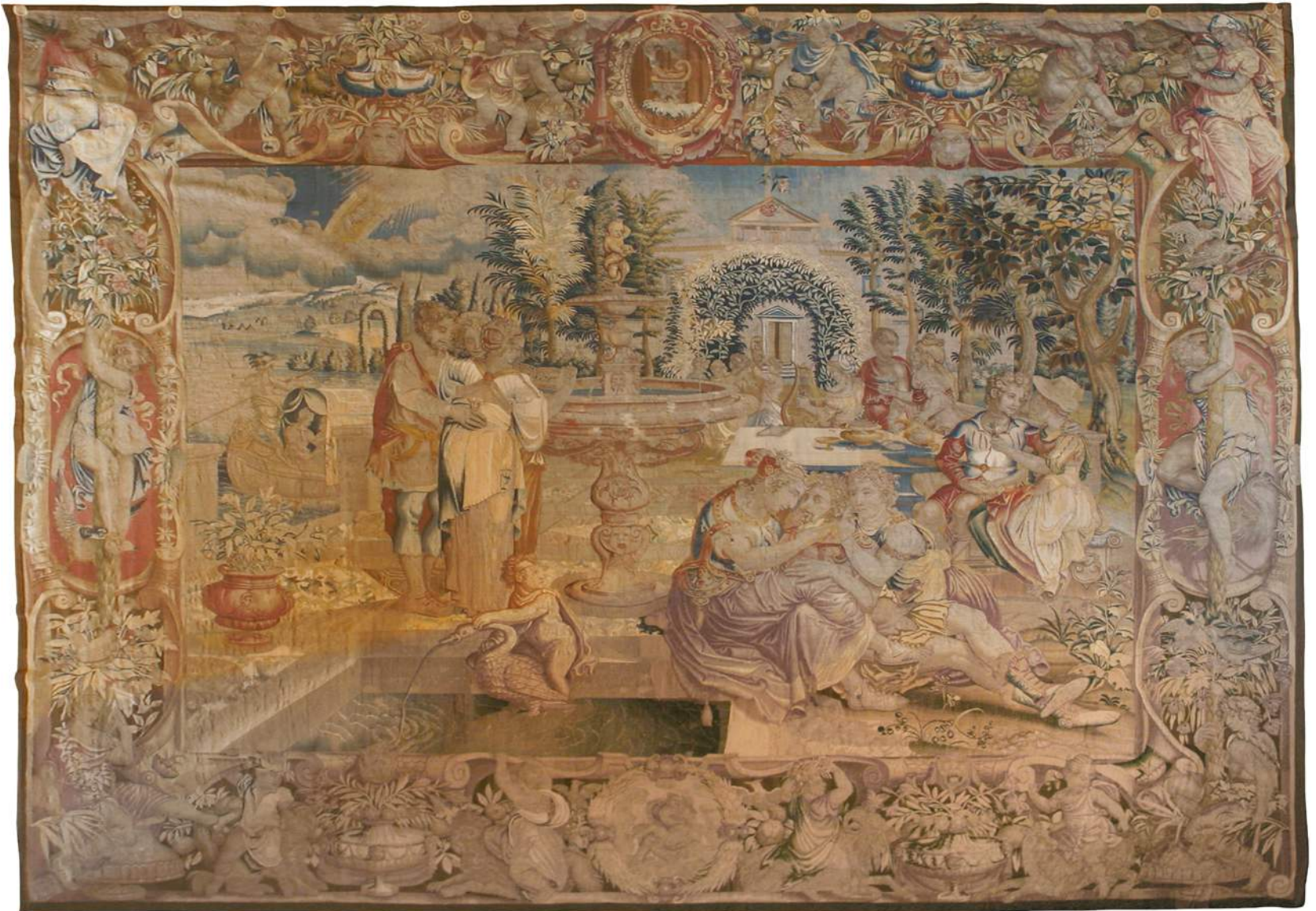
An almost identical tapestry, with the Brussels town mark and weaver's mark identified as Jakob Geubels I (Gobel: Part I weaver's marks, p.3), was sold at Sotheby's London, 26 June 1981, lot 9. In both examples, the composition is cut to the right of the tent. Another similar, but later, version in a border of fruit and flowers, and with the figure of Numitor placed at the centre of the tapestry, is illustrated by Anna G Bennett, 'Five Centuries of Tapestry', 1976, no. 40, dated as c.1635.



312



313



314

LOTS 312 & 313

Two important Brussels tapestries from the 'History of Venus' series, in well preserved colours, within broad naturalistic borders woven with animals, bunches of fruit, birds and flowers.

Lot 312

A Brussels mythological tapestry,
The Story of Venus: Venus disclosing to Diomedes the conduct of his wife Aegialia,
 probably mid-16th century, after Bernard van Orley, possibly from the workshop of Guasparo di Bartolommeo Papini after Alessandro Allori,
 300 x 650cm approximately
£10,000 - 15,000

Panel VI of the Madrid set corresponds to the present tapestry, but without the figure of the fallen warrior with Venus(?) standing behind him to the right. ('In the Madrid example the right hand portion has been cut away so that Cupid is aiming at a purely conjectural target', Country Life, 20 January, 1934, North Mymms Park: II). It also has a more detailed landscape background and lacks the figures of mermen riding on sea monsters. The title now given to this tapestry is the same as that given to the example in Madrid. This is also illustrated in 'Gobel Wandteppiche', Leipzig, 1923, Part I, Vol. II, abb.98.

Lot 313

A Brussels mythological tapestry,
The Story of Venus: Venus saves Aeneas from the wrath of Diomedes,
 probably mid-16th century, after Bernard van Orley,
 370 x 392cm
£10,000 - 15,000

Panel V of the Madrid set corresponds to the present tapestry, but without the figure of Venus and her pursuer seen in the background.

Lot 314

A Florentine allegorical tapestry: spring,
 early 17th century, after Alessandro Allori, with three figures singing by a fountain, a pool in the foreground and a table on the right in the open air beneath trees, with figures around seated and talking, in a broad auricular scrolled border with figures, animals, fruit and flowers centring on a smoking brazier,
 13ft 3ins high x 16ft wide (403 x 488cm)
£10,000 - 15,000

Provenance: By repute the Pallavicino Family, by descent to Marchese Serra, Palazzo Verde, Genoa; from whom purchased by J Pierpont Morgan and gifted to Walter Hayes Burns; Christie's North Mymms Park, September 1979, lot 492.

Literature: Hermann Schmitz - 'Bildteppiche', Berlin, 1919, p. 318, pl. 157 and Heinrich Gobel - 'Wandteppiche', Part II, vol. I Leipzig, 1928, p. 389.



315

Lot 315
A tapestry panel, emblematic of autumn,
 late 17th century, Mortlake or Hatton Garden, London, woven with a vineyard scene in verdure tones heightened with red, the grapes being trodden in a large barrel with gatherers coming forward with baskets and pickers on the right, overhung by trees with buildings in a landscape behind,
 9ft 2ins high x 8ft 4ins wide (279 x 256cm).
£8,000 - 12,000

H C Marillier points out that the Mortlake Months, to which this panel belongs, are probably based on the Brussels suite of the Months by Gilles de Leyniers. The Mymms panel was probably part of a double panel representing two months and is very close to the left side of the panel of October from the complete Mortlake Months at Melbury House, Dorset (H C Marillier, 'English Tapestries of the Eighteenth Century', 1930, pl.23).

Provenance: Christie's North Mymms Park, September 1979, lot 491.



316

Lot 316**A Florentine allegorical tapestry, emblematic of winter,**

early 17th century, after Alessandro Allori, depicting a tapestry-hung room with a canopied bed and figures in domestic pursuits on the right, a peasant bringing in faggots to a kitchen on the left, the broad sculptural border woven with reclining figures of night and day, figures emblematic of the four seasons, bearded satyrs, a log-filled lion mask furnace and grotesque sea scrolls, 13ft 4in x 13ft 5in (406 x 409cm)

£10,000 - 15,000

Provenance: Christie's North Myrms House, September 1979, lot 493.

Literature: Hermann Schmitz, 'Bildteppiche', Berlin, 1919, p.318, pl.157 and Heinrich Gobel 'Wandteppiche, Part II', vol. I Leipzig, 1928, p.389.



317

Lot 317

A Brussels Teniers tapestry, of the Kermesse,

mid-18th century, woven in blues, reds and verdure tones with groups of peasants making merry, eating, drinking and dancing outside an inn, with rustic buildings on the left and a pond in the foreground overhung by trees, with a distant landscape in the background, in picture frame border with the Brussels town mark in the selvedge,

10ft 4in x 17ft 10in (314 x 543cm)

£10,000 - 20,000

Provenance: With J Pierpont Morgan;

Christie's North Mymms Park, September 1979, lot 494.

This version of the Kermesse is attributed by H C Marillier to the Van der Borcht brothers, Pierre (active 1712-1763) and François (active 1720-1765), ('Handbook to the Teniers Tapestries', 1932, pp.46-48). Marillier lists the present example amongst the surviving complete panels which include a large set in Vienna and another set formerly in the collection of the Earl of Bradford, Castle Bromwich.



318

Lot 318**A Brussels tapestry,**

mid-18th century, attributed to Pieter and Frans van der Borgh, after David Teniers II, depicting a pastoral scene in the foreground with milkmaids at work with the herd, together with a flock of sheep before an extensive Flemish landscape, within a picture frame border, *Brussels town mark bottom right*,
10ft 5in x 12ft 8in (316 x 385cm)

£10,000 - 20,000

Literature: H C Marillier, 'Handbook to the Teniers Tapestries', page 51.

A similar tapestry from Wentworth Castle was sold by Christie's, 20 November 1919 and another part-set of four, Sotheby's, 15 July 1938.

Another very similar version by Frans van der Borgh, but including the sow and litter to the far right omitted from some examples, was sold Christie's, 6 June 1985, lot 225.



319

Lot 319
A Mahal carpet,
North-West Persia, c.1900, the red ground with a central panel and all-over scrolling foliage within a foliate border,
700 x 410cm
£3,000 - 4,000

Lot 320
A modern Indian carpet,
the pale ground with a central blue palmette and scrolling blue border,
370 x 278cm
£200 - 300



321

Lot 321
A Sarouk carpet,
the red field decorated with closely formed palmettes, within a multiple border,
410 x 325cm
£1,000 - 1,500

Lot 322
A modern Isfahan carpet,
the pale central panel decorated with scrolling foliage within a multiple border,
430 x 305cm
£300 - 400
Matching to lot 323.

Lot 323
A modern Isfahan carpet,
the pale central panel decorated with scrolling foliage within a multiple border,
430 x 305cm
£300 - 400
Matching to lot 322.



320



322



323



324



325



326

Lot 324

An Indo-Ziegler wool carpet,
the blue field decorated with large
palmettes,
550 x 373cm
£1,500 - 3,000

Lot 325

A Bidjar carpet,
North-West Persia, c.1900, the indigo herati
field with a large rose madder medallion
enclosing a lobed indigo medallion, with
similar spandrels and a madder leaf border,
652 x 405cm
£2,000 - 4,000

Lot 326

A Bidjar carpet,
North-West Persia, c.1910, the indigo field
with an overall vinery trellis, within floral
outer borders,
609 x 366cm
£2,000 - 4,000

Lot 327

An Heriz carpet,
North-West Persia, the brick red field with a
central medallion within an indigo border,
298 x 204cm
£2,000 - 4,000



327



328



329

Lot 328

A Derbend runner,
North East Caucasus, c.1890, the central indigo field with pale indigo
column of ten guls,
354 x 137cm
£300 - 500

Lot 329

A modern Isfahan carpet,
the pale ground with all-over design,
218 x 138cm
£200 - 300

Lot 330

A Persian carpet,
early 20th century, the red ground decorated with various geometric
motifs within a multiple border,
478 x 350cm
£300 - 500

Lot 331

An Iranian Isfahan wool and silk carpet,
the ivory field with a blue and polychrome foliate and bird medallion
enclosed by a fawn border and five guard stripes,
250 x 156cm
£300 - 500



330



331

*The Cherry
Corridor*

332-372





332

Lot 332

Carl Wilhelm de Hamilton (Flemish, 1668-1754)

FOREST FLOOR STILL LIFES, EACH WITH A SNAKE, A LIZARD, A SNAIL AND BUTTERFLIES

A pair, oil on panel

32 x 23.5cm (2)

£8,000 - 12,000

Provenance: Phillips London, 16 February 1988, lots 60 and 61 (£13,000).



333



335

Lot 333
Hermanus Koekkoek Jr.
 (Dutch, 1836-1909)
 A TUG AND A SAILING
 VESSEL OFFSHORE
 Signed I.I., oil on canvas
 33 x 26cm
 £300 - 500

Lot 334
Christian Cornelis
Kannemans
 (Dutch, 1812-1884)
 FISHING BOATS OFF A
 COASTLINE
 Signed I.I., oil on panel
 51 x 65cm
 £800 - 1,200

Lot 335
Circle of Edward
Pritchett (1808-1876)
 A VENETIAN SCENE
 Inscribed 'Venice' I.I.,
 oil on board
 23 x 30cm
 £200 - 300



334



336

Lot 336
Robert Mitford (1781-1870)
 A LONG-EARED OWL
 Signed l.r., inscribed l.l., pen and ink, watercolour and bodycolour
 35 x 24.3cm
£1,000 - 1,500
 Provenance: Library of H Bradley Martin.



337

Lot 337
Robert Mitford (1781-1870)
 A CARRION CROW
 Signed l.r., inscribed l.c., indistinctly inscribed 'plate 28', pen and ink and watercolour
 36.7 x 44.5cm
£400 - 600
 Provenance: Library of H Bradley Martin.



338

Lot 338
Robert Mitford (1781-1870)
 A WATER RAIL
 Signed l.l., pen and ink and watercolour
 26.3 x 43cm
£700 - 1,000
 Provenance: Library of H Bradley Martin.



339

Lot 339
Robert Mitford (1781-1870)
 A GALLINULE
 Signed l.l., pen and ink, watercolour and bodycolour
 27.8 x 44cm
£600 - 800
 Provenance: Library of H Bradley Martin.



340



341



342

Lot 340**Robert Mitford (1781-1870)**

A CORMORANT

Signed I.I., pen and ink, watercolour and bodycolour

54 x 38.8cm

£1,000 - 1,500

Provenance: Library of H Bradley Martin.

Lot 341**Robert Mitford (1781-1870)**

A ROOK

Signed and inscribed I.I., pen and ink and watercolour

25.5 x 41cm

£400 - 600

Provenance: Library of H Bradley Martin.

Lot 342**Prideaux John Selby (1788-1867)**

A RAVEN

Signed I.I., inscribed I.r., pen and ink, watercolour and bodycolour

42.4 x 48.7cm

£500 - 700

Provenance: Library of H Bradley Martin.

Lot 343**Prideaux John Selby (1788-1867)**

A GUILLEMOT AND CHICK

Signed I.I., pencil, pen and ink and watercolour

39 x 25.7cm

£800 - 1,200

Provenance: Library of H Bradley Martin.



343



344



345



346



347

Lot 344

Prideaux John Selby (1788-1867)

A LITTLE AUK

Signed l.l., pen and ink and watercolour

20.2 x 30.2cm

£500 - 700

Provenance: Library of H Bradley Martin.

Lot 345

Prideaux John Selby (1788-1867)

A JACKDAW

Signed l.l., pen and ink, watercolour and bodycolour

24.8 x 37.3cm

£400 - 600

Provenance: Library of H Bradley Martin.

Lot 346

Prideaux John Selby (1788-1867)

A CRAKE

Signed l.l., pen and ink, watercolour and bodycolour

21.7 X 33cm

£600 - 800

Provenance: Library of H Bradley Martin.

Lot 347

Prideaux John Selby (1788-1867)

A LITTLE BUSTARD

Signed l.r., inscribed l.c., pen and ink, watercolour and bodycolour

42.5 x 38.5cm

£1,000 - 1,500

Provenance: Library of H Bradley Martin.

Lot 348

After Thomas Rowlandson (1756-1827) and Augustus Charles Pugin (1762-1832)
 VAUXHALL GARDEN;
 GUILDHALL;
 WEST INDIA DOCKS;
 CUSTOM HOUSE;
 DRAWING ROOM, ST JAMES;
 HOUSE OF LORDS;
 EGYPTIAN HALL, MANSION HOUSE;
 HOUSE OF COMMONS
 Eight hand-coloured aquatints from the 'Microcosm of London', published by R Ackermann's Repository of Art, 1808-1810
 25.5 x 20cm (8)
 £300 - 500



348 part lot

Lot 349

James Malton (1761-1803)
 ST STEPHEN'S GREEN, DUBLIN
 Hand-coloured aquatint, published 1796
 image 25 x 38cm
 £200 - 300



349



350

Lot 350

*Peter Coker (1926-2004)
 VIEW OF A COASTAL TOWN
 Signed with initials l.r., watercolour
 17 x 25cm
 £100 - 200



353

Lot 351

Hercules Brabazon Brabazon (1821-1906)
 A RIVER ESTUARY
 Signed with initials l.r., watercolour
 19 x 25.5cm
 £200 - 300



351

Lot 352

Circle of John Callow (1822-1878)
 FISHING BOATS OFF THE COAST
 Watercolour
 24 x 35.5cm
 £100 - 200



352

Lot 353

C... Whilbin (19th century)
 A STOLEN KISS - CAVALIERS AND A KITCHEN MAID IN AN INTERIOR
 Signed l.l., watercolour
 22 x 14.5cm
 £100 - 150

353

Lot 354

Richard Principal Leitch (1827-1882)
 FISHING BOATS OFF MARGATE
 Watercolour heightened with white
 21.5 x 32cm
 £200 - 300



354



355

Lot 355
 A modern presentation basket hilt sword and scabbard, the gilt finished hilt with a red felt lining, the blade inscribed 'Presented to Sir Paul Girolami on the occasion of his opening of the General Purpose Production Facility at Montrose on 3rd September 1992', complete with framed certificate, sword 94cm long in total (3)
 £100 - 200



356

Lot 356
 A collection of glassware, comprising a modern 'North Mymms Park' square decanter and stopper and a pair of tumblers, engraved with a view of the house and inscribed, 24cm high, a pair of Victorian cut glass decanters, lacking stoppers, 2 jugs, a comport, and 5 rummers (14)
 £50 - 100

Lot 357
 A composition bronzed finish figure, 20th century, of a young couple, 50cm high
 £80 - 150



357



358

Lot 358
 An Indian carved coconut shell, 19th century, worked with figural panels below a flower head border and a white metal lip, mounted on a brass stand in the form of three kneeling elephants, and another, 14cm high (2)
 £200 - 400



359

Lot 359
 An unusual Indian bronzed metal inkwell in the form of an elephant head, early 20th century, 17.5cm wide, and a late Victorian cut glass desk stand, with two glass inkwells, 30cm wide (2)
 £80 - 120



360

Lot 360
 An ivory chess set, 19th century, natural and stained red, housed in an oak case, king 10cm high (33)
 £200 - 400

Lot 361
 Spare lot



362



363



364



365

Lot 362

A silver-mounted tortoiseshell box, late 17th century, oval with chevron engraved rim mount, the lid applied with a portrait bust of Charles I, hinge initialled 'NI', 9cm wide, a George III carved and stained wooden cribbage marker, probably Anglo-Indian, dated 1780, finely carved, 23cm long, a tortoiseshell or pressed horn seal box, cover and seal, 19th century, with engine turned and pressed decoration, and two further tortoiseshell or horn boxes, 19th century, with pressed and engine turned decoration, 5, 7.5 and 8cm diameter (9)
£250 - 350

Lot 363

A pair of Sorrento ware turned wooden barrels, late 19th century, with inlaid floral panels to one end, 14cm high, and a pair of small toleware mugs, 19th century, painted with a young girl with a hen and a boy with a dog, 7.5cm high (4)
£100 - 200

Lot 364

Thirteen horn tumblers, 18th/19th century, all with engraved or scratch carved scenes, including hunting and fishing, one dated 1830, another inscribed 'Rat Catcher', and a raw horn mug, tallest 11cm (14)
£400 - 600

Lot 365

A pressed brass alms dish, probably late 17th century, 21cm diameter, and a brass table bell/candlestick, probably 17th century, 15cm high (2)
£100 - 300

Lot 366

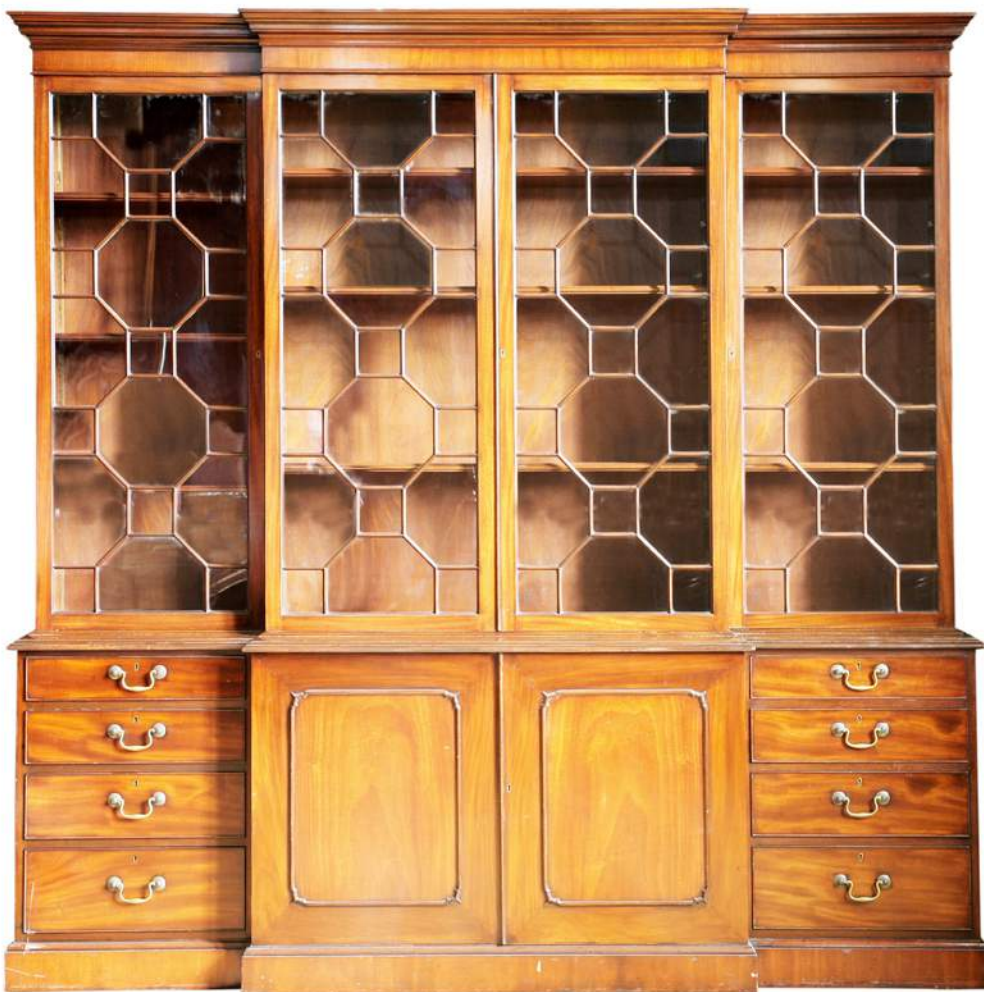
Two pewter tankards, in the 17th century-style, with wrigglework decoration, 16cm high, a pair of pewter candlesticks, 15cm high, a pair of steel scissor candle snuffers, 16cm high, and a pottery tankard, 11.5cm high (9)
£100 - 200



366



367



368

Lot 367

A walnut cassone, 1644, the hinged panelled top with a central escutcheon to a large and ornate lock to the underside, flanked by ornate iron hinges, the single piece front ornately carved with three arched 'panels' of scrolls and foliage within four carved pilasters, the central panel dated '1644', raised on ball feet,
148cm wide
55cm deep
77cm high
£2,000 - 4,000

Lot 368

A reproduction mahogany breakfront bookcase, in the George III-style, the moulded cornice over four astragal glazed doors, the base with two panelled doors flanked by eight drawers on a plinth base,
220cm wide
41cm deep
213cm high
£300 - 500

Lot 369

A pair of walnut elbow chairs,
late 19th century in the late 17th century-style, with upholstered backs
and seats, on turned front legs united by stretchers,
107cm high (2)
£100 - 200

Lot 370

An oak mule chest,
18th century, the hinged panelled top over three fielded panels, two
drawers and bracket feet,
136cm wide
57cm deep
82cm high
£200 - 400

Lot 371

A Charles II oak chest of drawers,
having four long geometrically moulded drawers and panelled sides on
turned feet,
95cm wide
53cm deep
91cm high
£100 - 200

Lot 372

A large and ornate Victorian oak overmantel mirror,
the broken arched top crisply carved with a clam shell, putti and flowering
foliage, over an arched mirror flanked by male caryatids and scrolling
foliage,
164cm wide
172cm high
£1,000 - 2,000



369



370



371



372

The Cherry Room

373-381



373

Lot 373
Attributed to Peter Monamy (1681-1749)
SHIPPING OFF ST HELIER, JERSEY
Oil on canvas
50 x 92cm, in a carved giltwood frame
£2,000 - 3,000
Provenance: Christie's London, 15 April 1988, lot 96 (£3,000).

Lot 374
Thomas Whitcombe (1763-1824)
HM FRIGATE 'FLORA', 36 GUNS (CAPTAIN ROBERT GAMBLER
MIDDLETON) LEAVING PORTSMOUTH HARBOUR
Signed I.I., oil on canvas
53 x 77cm, in a giltwood Maratta frame
£4,000 - 6,000
Provenance: Christie's London, 15 April 1988, lot 85 (£10,000).



374

Lot 375

John Rathbone (1750-1807)
A WOODED LANDSCAPE WITH
A FIGURE BY THE BARN
 Oil on panel
 27 x 34cm
 £300 - 500



375

Lot 376

***Ben Maile (b.1922)**
A BEACHED BOAT
 Signed I.L., oil on canvas
 51 x 61cm
 £100 - 150



376

Lot 377

A pair of slender turned and wrought brass, two-branch, three-light
table candelabra,
 c.1900, on circular feet,
 27cm, and
a single cast brass three-branch table candelabrum,
 18th century-style, on a shaped raised foot,
 35.5.cm (3)
 £150 - 200



377

Lot 378

A mahogany extending dining table,
 early 19th century, with five extra leaves, the shaped moulded top above a
 frieze with canted corners, ten turned and reeded legs with brass castors,
 484cm wide
 149cm deep
 £2,000 - 4,000



378



379

Lot 379

A William-and-Mary-style panelled and moulded chest, of four long drawers on raised bun feet, in two sections, 96cm wide
59.5cm deep
96.5cm high
£800 - 1,500

Lot 380

A George III mahogany straight front chest, the moulded top above four long graduated and cock-beaded drawers and on bracket feet, 91cm wide
47cm deep
87.5cm high
£500 - 700

Lot 381

A Regency mahogany tea table, the fold-over top with a reeded border above a turned spiral twist pedestal, four swept reeded legs and brass castors, 92cm wide
45.5cm deep
75.5cm high
£400 - 700



380



381

The Minstrel Gallery

382-394



Lot 382

Follower of Marcus Gheeraerts the Younger (Flemish, 1561-1635)

PORTRAIT OF WILLIAM CECIL, LORD BURGHLEY (1520-1598), HALF LENGTH, IN GARTER ROBES

Inscribed u.r. 'Lorde burghley, lorde highe treasurer of england, master of the wardes, and one of his majestis most honorable privey counsellors', painted u.l. with a coat of arms, oil on panel

78 x 62cm, in a 17th century-style carved wood frame

£10,000 - 15,000



383



384



387



385



386



388



389

Lot 383
A pewter charger, 18th century, with a crest to the border, 60cm diameter, and another, with touch marks verso, 46cm diameter (2)
£100 - 200

Lot 384
A Continental cast brass cylindrical baluster vase, 18th century, with ringed decoration and flared rim, 39cm high
£200 - 400

Lot 385
A brass scale model of the tinworks steam engine, 'The Princess of York', 20th century, with a plaque 'To Commemorate the First Firing of the Princess of York, Glaxo at Ware 14:11:88', 33cm high
£150 - 250

Lot 386
A Nuremberg pressed brass alms dish, early 18th century, with a 'spun' floral central field, 43cm diameter
£100 - 200

Lot 387
An Islamic prayer board, probably 19th century, with painted text and decoration, 50cm long
£100 - 200

Lot 388
A Scottish pewter lidded tankard, 18th century, the flat cover with a turned knob and bifurcated thumbpiece, over a flared cylindrical body inscribed 'CUMBND, Kirk, 1774', 25.5cm high
£100 - 200

Lot 389
A ten-branch smoked glass electrolier, 1960s, 95cm diameter
£80 - 150



390

Lot 390

An impressive Louis XV-style ebony and red broule bureau plat, c.1900, the leather inset top within an ebony and engraved brass banded border and applied ormolu corner brackets, above a brass and red broule contra-partie frame, fitted with three frieze drawers to opposing sides and scrolled angled legs with applied ormolu mounts, including well cast masks to each side, scrolling sabots and brass castors,
 175cm wide
 118cm deep
 73.5cm high
 £5,000 - 10,000



390 detail



390 detail



391 part lot

Lot 391

A pair of Regency rosewood and brass inlaid side cabinets, the veined marble tops above a pair of silk-lined doors, cast brass borders and brass paw feet, 108cm wide 35cm deep 96cm high (2) £1,500 - 2,500

Lot 392

An oak side table, in the 17th century style, the rectangular top with cleated ends, above a single frieze drawer with drop handles, supported on bobbin turned legs, united by a pair of central stretchers to an 'H'-shaped stretcher below, 71.5cm wide 54cm deep 71cm high £200 - 400

Lot 393

A Biedermeier-style burr maple, glass-fronted and mirror-backed display cabinet, 20th century, the lancet top with ebony stringing and a circular mirrored medallion above two glass doors, flanked by half circular front pillars, a plinth base and ebonised squat bun feet, 98.5cm wide 45cm deep 207cm high £1,000 - 2,000

Lot 394

A Venetian glass wall mirror, 19th century, with a decorative applied floral and leaf scrolled finial above a three-banded octagonal mirror plate, 72cm wide 107cm high £500 - 700



393



392



394



*The Burns
Suite*

395-438



395



396



397



398



399

Lot 395

***John Bentham-Dinsdale (1927-2008)**
 'CLEARING SKIES, SOVEREIGN OF THE SEAS'
 Signed l.l., signed and inscribed with title verso, oil on canvas
 41 x 51cm
 £500 - 700

Lot 396

***John Bentham-Dinsdale (1927-2008)**
 'NIGHT COMPANY, SOVEREIGN SEAS'
 Signed l.l., signed and inscribed with title verso, oil on canvas
 41 x 51cm
 £500 - 700

Lot 397

***John Bentham-Dinsdale (1927-2008)**
 'PACIFIC ROLLERS, SOVEREIGN OF THE SEA'
 Signed l.l., signed and inscribed with title verso, oil on canvas
 51 x 61cm
 £500 - 700

Lot 398

***John Bentham-Dinsdale (1927-2008)**
 'BATTLE OF LAKE ERIE, 10TH SEP 1813'
 Signed l.l., signed and inscribed with title verso, oil on canvas
 61 x 92cm
 £1,500 - 2,000

Lot 399

***John Bentham-Dinsdale (1927-2008)**
 'THE PAUL JANE - THE OLD WORLD AND THE NEW'
 Signed l.l., signed and inscribed verso, oil on board
 20 x 25.5cm
 £200 - 300

Lot 400***John Bentham-Dinsdale (1927-2008)**

'SUN UP, WIND UP, SOVEREIGN OF THE SEAS'

Signed I.I., signed and inscribed with title verso, oil on canvas

41 x 51cm

£500 - 700



400

Lot 401***John Bentham-Dinsdale (1927-2008)**

NELSON IN THE AGAMEMNON, WITH 'CA IRA' AND

'CENSEUR', 13TH MARCH 1795

Signed I.I., signed and inscribed with title verso

76 x 102cm

£2,000 - 3,000



401

Lot 402***John Bentham-Dinsdale (1927-2008)**

'THE INDEPENDENCE OFF GIBRALTAR, 1875'

Signed I.I., inscribed with title verso, oil on canvas

92 x 127cm

£2,000 - 3,000



402



403



404

Lot 403
Richard Cooper and S Minasi, after Hans Holbein the Younger
THE LADY LISTER;
THE LADY VAUX
Coloured stipple engravings, from John Chamberlaine's 'Imitations of Original Drawings by Hans Holbein...', originally published 1812
plate mark 32 x 28cm (2)
£100 - 150

Lot 404
Circle of George Richmond (1809-1896)
PORTRAIT OF THE MARQUIS OF WESTMINSTER, THREE-QUARTER LENGTH, IN A BROWN CLOAK, BY A PILLAR;
and another,
THE LADY ELIZABETH LAWLEY, THREE-QUARTER LENGTH, IN A WHITE DRESS AND BROWN SHAWL
Two, inscribed l.r., watercolour over pencil
45 x 33cm (2)
£300 - 500



407

Lot 405
Aldo Marian (Italian, 20th century)
RIO MISERCORDIA, VENICE
Signed l.l., inscribed verso, oil on canvas
50 x 70cm
£200 - 300

Lot 406
Aldo Marian (Italian, 20th century)
PONTE E CANALE, VENICE
Signed l.l., inscribed verso, oil on canvas
50 x 70cm
£200 - 300

Lot 407
Aldo Marian (Italian, 20th century)
'CANALE DI S. POLO, VENICE'
Signed l.l., inscribed verso, oil on canvas
70 x 50cm
£200 - 300



405



406

Lot 408

Aldo Marian (Italian, 20th century)
 PONTE E CANALE DEL REMEDIO,
 VENICE
 Signed l.l., inscribed verso, oil on
 canvas
 50 x 70cm
 £200 - 300



408

Lot 409

Aldo Marian (Italian, 20th century)
 A CANAL, VENICE
 Signed l.r., oil on canvas
 70 x 50cm
 £200 - 300



409

Lot 410

Manner of Canaletto
 LA SANTA MARIA DELLA SALUTE
 AND LA DOGANA, VENICE
 Oil on canvas
 102 x 127cm, in a carved giltwood
 frame
 £3,000 - 5,000



410



411



412



413



414



415

Lot 411
A pair of modern table lamps, the acanthus columns with twisted glass stems on stepped bases, with shades, 76cm high overall (2)
£200 - 400

Lot 412
A pair of modern table lamps, the acanthus columns with twisted glass stems on stepped bases, with shades, 76cm high overall (2)
£200 - 400

Lot 415
An Edwardian strung mahogany mantel clock, with an enamel dial and French movement striking on a gong, the sides with pierced brass 'fish scale' panels, on brass bracket feet, 39cm high
£100 - 200

Lot 413
A modern brass standard lamp, with a sectional ribbed glass column, with shade, 175cm high overall
£100 - 200

Lot 416
A George III tortoiseshell decagonal tea caddy, the interior with twin compartments, ivory borders and stringing, a white metal knob and plaque on porcelain feet, 25.5cm high
£300 - 600



416



417

Lot 414
English School, 19th century, a racehorse and jockey, bronze on a Sienna marble and bronze plinth, 24cm wide 25cm high
£200 - 400

Lot 417
A tortoiseshell tea caddy, first half of the 19th century, the interior with twin compartments below a cushion moulded top, over ivory borders and a front well inlaid with mother-of-pearl flowers and foliage, on porcelain feet, 24cm high
£300 - 400



418

Lot 418
Four Royal Doulton figures, Ninette HN 2379; Sara HN 2265; The Skater HN 3439; Katie HN 3360, and a Coalport figure of Diana (5)
£50 - 100



420 detail

Lot 420

A Continental ebony and red tortoiseshell glazed display cabinet,

18th century, having a cast metal gallery over an astragal glazed door enclosing shaped and inlaid shelves, the back painted with classical garden landscapes, the carcase inlaid with red tortoiseshell panels within inlaid brass borders on an ebony ground, the interior with strung and parquetry decoration, raised on claw and ball feet, *originally a chest on stand, now sitting on a plain modern oak stand,* cabinet 82cm wide
44cm deep
114cm high
£2,000 - 4,000

420



421 open

Lot 421
A Chinese lacquered two-door cabinet, 18th century, on an associated stand, 95cm wide 51cm deep 149.5cm high £600 - 900



422

Lot 422
A French walnut side cabinet, 19th century, having a cushion moulded top over two doors with oval glass panels, a shaped plinth base and cast gilt metal mounts, 120cm wide 32cm deep 110cm high £600 - 900



423

Lot 423
A George II oak double drop-leaf table, the oval drop-leaf top over two frieze drawers, on eight turned legs and claw and ball feet, 62cm wide 181cm open 69.5cm high £400 - 800



421 closed

Lot 424
A George II mahogany drop-leaf table, with square leaves on pad foot legs, 91cm wide 106cm open 71cm high £200 - 300



424

Lot 425
A pair of George I-style walnut single chairs, first half of the 20th century, upholstered in green damask, the rails crisply carved with scrolling foliage, the scrolled legs carved with stiff leaves, 96cm high (2) £300 - 600



425

Lot 426
A country oak side table, mid-18th century, the plank top over a scrolled frieze and square scrolled legs, 67cm wide 43cm deep 68cm high £100 - 200



426



Lot 427

An exhibition quality single door satinwood cabinet, mid-19th century, the raised back with a three-quarter cast gilt gallery over two shaped shelves on cast ormolu columns, the base with a strung and crossbanded top over a frieze and a single panelled door, beautifully inlaid in bone and various woods with ribbon-tied musical instruments, scrolling foliage and geometric motifs, the front corners with turned inlaid and ormolu-mounted columns, on turned feet, the sides strung, inlaid and crossbanded, the whole with ormolu mounts, 80.5cm wide
39.5cm deep
151cm high
£3,000 - 5,000

Lot 428

A George II-style giltwood wall mirror,
18th/19th century, the frame crisply carved with rocaille and palm
fronds, the divided plate later,
94cm wide
158cm high
£2,000 - 3,000



428

Lot 429

A George III brass-bound mahogany oval peat bucket,
of coopered construction with a brass swing handle and later liner,
36cm high
£200 - 400



429

Lot 430

A pair of George III mahogany Gainsborough or library chairs,
upholstered in gold damask, the downswept arms on square
supports,
97cm high (2)
£500 - 1,000



430



Lot 431
A George III mahogany Gainsborough or library chair, upholstered in green damask, the downswept arms carved with flower heads and trailing leaves over stop fluting, on square supports, 99cm high
£1,000 - 2,000

431



Lot 432
A reproduction mahogany writing table, the three-part leather inset top over three drawers, dummy drawers and standard ends, 171cm wide
79cm deep
73cm high
£200 - 300

432



Lot 433
A Regency rosewood cabinet, having a later grey veined marble top over a plain frieze with a beaded border, four panelled doors, flanked by scrolled columns and a plinth base, 183cm wide
41cm deep
92cm high
£1,000 - 2,000

433

Lot 434

A George III mahogany strung and crossbanded demi-lune card table, the fold-over top on turned and tapering legs with delicate stringing, 91cm wide 45cm deep 73cm high £400 - 800



434

Lot 435

A Victorian mahogany tripod table, the rectangular snap top on a bobbin-turned column and scrolled supports, 54cm wide 49.5cm deep 72cm high £100 - 200



435

Lot 436

A reproduction mahogany bedside table, fitted with two drawers, on turned feet, 48cm wide 42cm deep 64cm high, and another similar, 46cm wide 48cm deep 59cm high (2) £100 - 150



436

Lot 437

A George III mahogany three-seat settee, upholstered in green silk with a squab cushion, with turned and reeded arm supports and legs, 199cm wide £800 - 1,500



437

Lot 438

A large George II giltwood wall mirror,
c. 1755, the shallow bevelled oblong plate within a
scrolled border and shaped border plates, the crest carved
as a basket of flowers over the carved, gilt-scrolled frame,
the sides with pendant flowers,
139cm wide
240cm high
£4,000 - 8,000



The Long Gallery

439-461



Lot 439

John Glover OWS (1767-1849)

'THE BEGGAR'S OAK'

Oil on canvas

76 x 114cm

£20,000 - 30,000

The celebrated Beggar's Oak stood on Lord Bagot's estate at Blithfield Hall in Staffordshire. In 'The Trees of Great Britain and Ireland', printed in seven volumes between 1906 and 1913, Henry John Elwes describes it in the following terms: 'I visited it in March 1904...It now measures, as nearly as I could estimate, 62 feet high, with a bole of about 33 feet long, and a girth of 24 feet. The roots measure about 25 paces round and the branches cover an area of 114 paces round. It is one of the finest and best-preserved oaks of its type that I know'.

Provenance: Christie's London, 14 July 1989, lot 68 (£24,000).

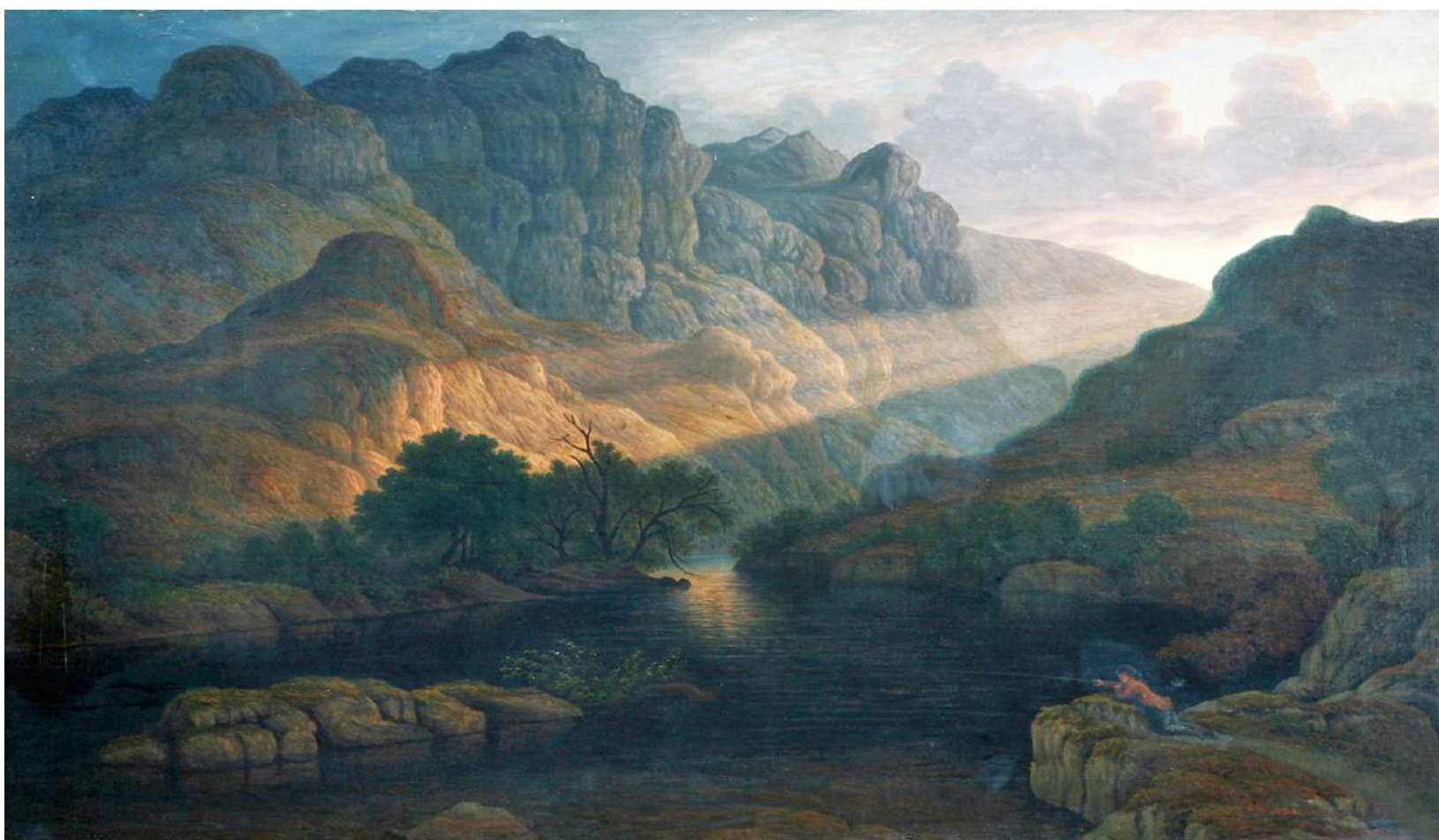


440

Lot 440
Flemish School,
late 17th century
A SOUTHERN RIVER
LANDSCAPE WITH A GROUP
OF PEASANTS DANCING
AND PLAYING MUSIC, AND
CATTLE WATERING IN A
STREAM
Oil on canvas
117 x 176cm
£3,000 - 5,000

Lot 441
John Glover OWS
(1767-1849)
SUNSET - A MOUNTAINOUS
LAKE LANDSCAPE WITH A
BOY FISHING
Oil on canvas
76 x 114cm
£15,000 - 20,000

Provenance:
Christie's London, 15 April
1988, lot 68 (£16,000);
cf. another version was sold
by Sotheby's in Melbourne,
21 November 2006 for
£34,621.



441



442

Lot 442
Jean-Jacques Spoede
 (Dutch, 1680-1757)
 STILL LIFE OF A CABBAGE,
 ARTICHOKE, FENNEL,
 APPLES, MARROWS AND A
 BASKET OF PEACHES AND
 FIGS ON A TABLE
 Signed and dated 1725 I.I.,
 oil on canvas
 84 x 116cm
 £10,000 - 15,000
 Provenance:
 Ader Picard & Tajan, Paris,
 14 April 1988, lot 72
 (£14,172).

Lot 443
Follower of Frederick de
Moucheron
 A SOUTHERN RIVER
 LANDSCAPE, WITH FIGURES
 AND GOATS BY A ROAD IN
 THE FOREGROUND
 Oil on canvas
 88 x 111cm
 £1,000 - 1,500



443



444



445



448



446



447



449



451

Lot 446
A pair of octagonal, glass and cast brass-mounted, four-branch, electric table lamps, modern, with shades, 80cm high (2)
£100 - 200

Lot 447
A pair of octagonal, glass and cast brass-mounted, four-branch, electric table lamps modern, with shades, 80cm high (2)
£100 - 200

Lot 448
A pair of fluted glass and brass-mounted electric standard lamps, modern, with shades, 180cm high overall (2)
£200 - 400

Lot 449
A pair of fluted glass and brass-mounted electric standard lamps, modern, with shades, 145cm (2)
£100 - 200



450 part lot

Lot 444
A Swiss lidded pewter jug, 19th century, inscribed and crested, with a ball finial, 30cm,
a Dutch lidded pewter jug, 19th century, decorated with a tulip motif and initialled 'J.G.I.' with a scrolled thumbpiece, 31cm, and
three English quart tankards, 19th century, one inscribed 'Greyhound Inn, Wadhurst' (5)
£200 - 400

Lot 445
An English pewter lidded tankard, 18th century, with a bifurcated thumbpiece, initialled 'T.W.I.R.' and a flat cover, 26cm high
£200 - 400

Lot 450
Five painted wood, faux rouge marble, pedestal electric table lamps, modern, brass mounts and with shades, 46cm (5)
£200 - 300

Lot 451
A pair of brass, four-branch, five-light, electric table lamps, modern in the 18th century-style, with cut-glass drops and shades, 72cm (2)
£200 - 300



452 open

Lot 452

A George III mahogany secretaire cabinet, the moulded teardrop cornice above a two-door panelled upper section, opening to reveal a fitted interior with an arrangement of sixteen satinwood and rosewood crossbanded drawers, the base with a secretaire above six short drawers, also with satinwood and rosewood crossbanding, original cast brass handles and bracket feet,

102cm wide

48cm deep

200cm high

£2,000 - 4,000



452

Lot 453

A Regency-style mahogany framed settee,

19th century, with leaf-scrolled arms and reeded and tapering front legs, carved floral medallions and brass castors, upholstered in a green silk damask with a buttoned back,

184cm wide

£1,000 - 2,000

Lot 454

A George III mahogany and boxwood strung secretaire bookcase,

the moulded cornice above two astragal glazed doors enclosing adjustable mahogany shelves, the base with a fitted secretaire above three long graduated drawers, a shaped apron and splay feet,

92cm wide

50cm deep

215cm high

£1,000 - 2,000

Lot 455

Spare lot



454



453



456

Lot 456

A giltwood overmantel mirror, in the 19th century-style, with a ribbon finial above a decorative leaf border, 106cm wide
121cm high
£100 - 200



457

Lot 457

A mahogany drum table, modern, the inset tooled leather top above four real and four faux drawers, to a turned pedestal and four swept legs, brass paw caps and castors, 76cm diameter, together with an octagonal table, modern, with an inset leather top above four real and four faux drawers, to a turned pedestal, four swept and fluted legs on brass caps and castors, 61cm (2)
£100 - 200



458

Lot 458

A chip-carved and metal-banded ecumenical box, early 19th century, with an hinged half lid and block feet, 42cm wide
31cm deep
23.5cm high
£200 - 300



459

Lot 459

A chip-carved and metal-banded ecumenical box, early 19th century, with an hinged lid and rough hewn cup feet, 45cm wide
33cm deep
24cm high
£200 - 300

Lot 460

A George III mahogany serpentine sideboard, the top with a moulded and leaf-carved border, above a central long drawer, flanked by flights of three graduated drawers, with well cast circular vase and rope twist handles, on bracket feet, 184cm wide
94cm deep
74cm high
£1,000 - 2,000

Lot 461

A pair of mahogany three-drawer bow front chests, early 19th century, the drawers with ebony edging and oval brass handles, within strung and crossbanded 'pilasters', the sides with similar 'pilasters', on square feet and castors, 109cm wide
55cm deep
93cm high (2)
£500 - 1,000



460



461 part lot

The West Wing

462-479

Lot 462
Gourlay Steell RSA (1819-1894)
AN AYRSHIRE BULL
Signed and dated 1865 l.r., oil on
canvas
97 x 127cm
£5,000 - 7,000



Lot 463
Gourlay Steell RSA (1819-1894)
A DEVON BULL
Signed and dated 1841 l.r.,
oil on canvas
97 x 127cm
£5,000 - 7,000





464

Lot 464
Attributed to Gourlay Steell RSA (1819-1894)
A HEREFORD HEIFER
Oil on canvas
102 x 127cm
£3,000 - 4,000



465

Lot 465
...Jefferson (mid-19th century)
A PRIZE BULL IN A LANDSCAPE
Signed l.r., oil on canvas
43 x 56cm
£1,500 - 2,000
Provenance: Christie's London, 15 April 1988, lot 17 (£4,000).



466

Lot 466
Thomas Freebairn Wilson (early 19th century)
THE WHITE HEIFER AND 'RED ROSE II' IN A LANDSCAPE
Signed and dated 'T F Wilson N.Castle 1808' l.c., oil on canvas
80 x 122cm
£4,000 - 6,000
Provenance: Christie's London, 15 April 1988, lot 10 (£8,500).

Lot 467

Attributed to John Sherriff (19th century)

A HEREFORD HEIFER

Oil on canvas

98 x 126cm

£2,000 - 3,000



467

Lot 468

J... Truman (mid-19th century)

A PRIZE BULL

Signed l.r., inscribed 'Bred and Fed by Mr George Dunning, Driffield, Weight 106 Stones aged 3½ years' and dated 1865, also inscribed verso, oil on canvas

50 x 60cm

£1,000 - 1,500



468

Lot 469

William Henry Davis (1783-1865)

A SHORTHORN OX IN A PARK, POSSIBLY BURGHLEY

Signed and dated 1855 l.r., oil on canvas

53 x 68cm

£2,000 - 3,000

Provenance: Christie's London, 15 April 1988, lot 15 (£7,500)



469



Lot 470

Attributed to Pieter van Boucle (Flemish, 1610-1673)

STILL LIFE OF FISH, VEGETABLES AND FRUIT IN A WICKER BASKET

Oil on canvas

88 x 122cm, in a carved giltwood frame

£10,000 - 15,000

Provenance: Sotheby's London, 15 April 1988, lot 79 (£12,000).

**Lot 471**

School of Fontainebleau (French, early 17th century)

CERES WITH THE FOUR ELEMENTS

Oil on panel

35 x 51cm

£15,000 - 25,000

Provenance: Christie's London, 7 July 1989, lot 74 (£18,000).



472



474

Lot 472

A tapestry fragment, probably 16th century, depicting seated and kneeling figures in a formal wooded landscape, 48cm wide, 56cm high, framed and glazed £300 - 400

Lot 473

English School, 19th century, a bronze figure of a seated greyhound, on a Sienna marble plinth, 19cm long £150 - 300

Lot 474

A satinwood eight-day striking bracket clock, early 19th century, the circular enamel dial inscribed 'French, Royal Exchange, London', the lancet-shaped case with bronze mounts and scrolled feet, recessed brass military handles and pierced brass Gothic frets to the sides, enclosing a twin fusee repeating movement, dial 8in (20cm) case 42.5cm high £500 - 800

Lot 475

An Edwardian satinwood bijouerie table, with a glazed, hinged top on square tapering legs, all with painted trailing husks, 60cm wide, 39cm deep, 72cm high displaying: a collection of eight medals, won by Messrs Allen and Hanbury Ltd., 1867-1928, Calcutta Exhibition 1928 for Infants Foods, Science Siftings Award September 1894, 1st from 8 competitors for Cod Liver Oil, The International Food Exhibition London, 1880, for Pharmaceutical Preparations, Centenary Commemorative Medal from the Cairo Medical Faculty and International Congress December 1926, United States Centennial Commission International Exhibition, Philadelphia 1876, USA St Louis Universal Exposition Gold Medal 1904, République Française, Paris Universal International Exposition 1878, and Paris Universal Exposition 1867 'Hors Concours' Emperor Napoleon (9) £200 - 400



473



475



475 Medal collection

Lot 476

A George III mahogany bureau bookcase, the dentil cornice over a blind fret frieze and two panelled doors, the base with a fitted interior, over four long graduated drawers, with original brass handles and ogee bracket feet, both sections with brass carrying handles, 91cm wide
53cm deep
203cm high
£700 - 1,500



476

Lot 477

A George III mahogany serpentine front sideboard, the top with broad, probably zebra wood, crossbanding, the front with three drawers, one a cellaret, over a shaped apron and six shaped square tapering legs, the front with strung decoration and inlaid flower heads, stylised scrolls and a central patera, 168cm wide
70cm deep
93cm high
£800 - 1,200



477



478



478 open



479

Lot 478

A Continental oak two-door chest on stand, 17th century, the moulded and panelled doors enclosing an arrangement of twenty-two drawers around a central door, the sides moulded and panelled with ornate iron handles, the base with a single moulded drawer on twist turned supports, wavy flat stretchers and bun feet, 87cm wide
44cm deep
138cm high
£2,000 - 3,000

Lot 479

A Knole settee, first half of the 20th century, upholstered in scarlet damask, the padded arms on turned mahogany supports, the seat with a squab cushion and five scatter cushions with embroidered panels, 176cm wide
76cm deep
96cm high
£400 - 600



480



481

Lot 480
 'Carte Generale de la Tierne ou
 Mappe Marde, Aue les Quatres
 Principaux Sisteries...',
 by Jean Baptiste Louis Clouet
 (c.1730-1790) 1787, with hand-coloured
 detail and border vignettes, four sheets,
 joined,
 94 x 120cm
 £300 - 500

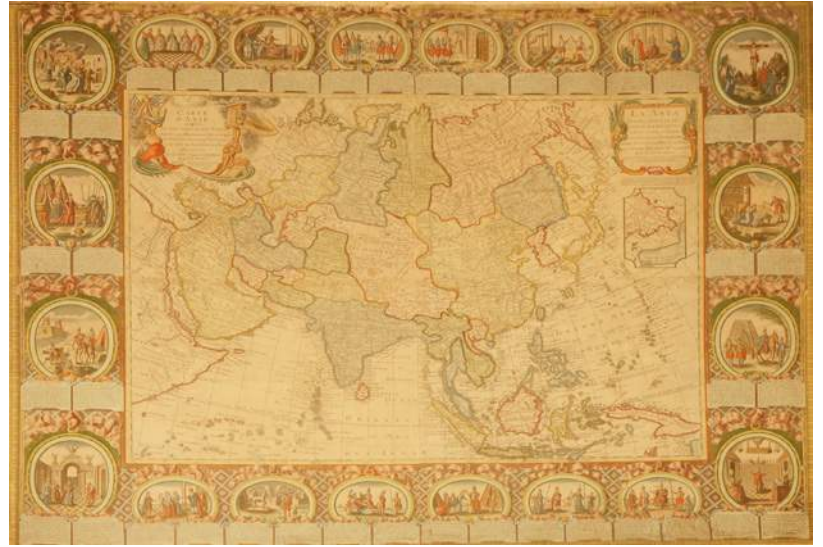
Lot 481
 'Carte d'Amérique Divisee en ses
 Principaux Pays...',
 by Jean Baptiste Louis Clouet
 (c.1730-1790) 1787, with hand-coloured
 detail and border vignettes, four sheets,
 joined,
 94 x 120cm
 £300 - 500

The Attics

480-526



482



483



484



485

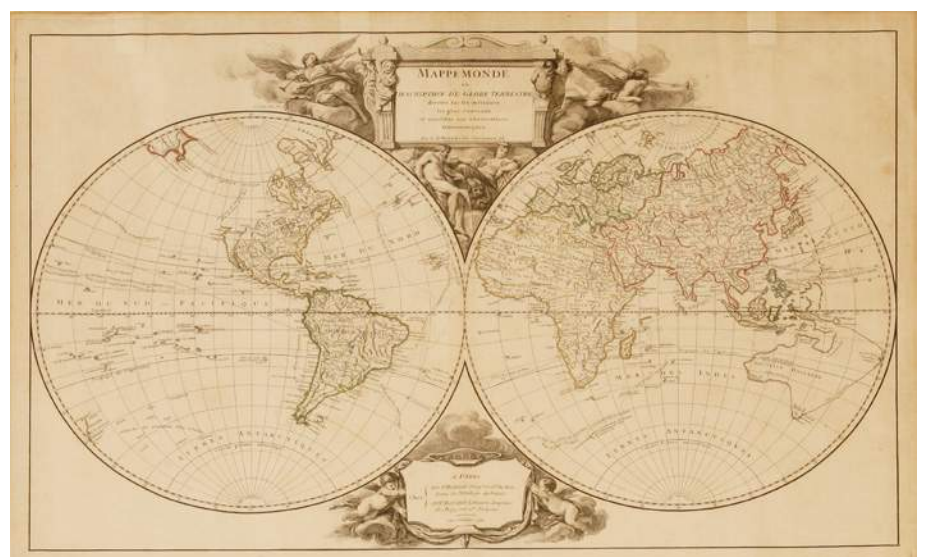
Lot 482
 'Carte D'Europe, Divisee en ses Empres et Rovaumes...',
 by Jean Baptiste Louis Clouet
 (c.1730-1790) 1787, with
 hand-coloured detail and border
 vignettes, four sheets, joined,
 94 x 120cm
 £300 - 500

Lot 483
 'Carte D'Asie Divisee en ses
 Principaux Etats...',
 by Jean Baptiste Louis Clouet
 (c.1730-1790) 1787, with
 hand-coloured detail and border
 vignettes, four sheets, joined,
 94 x 120cm
 £300 - 500

Lot 484
 'Carte D'Afrique Divisee en ses
 Principaux Etats...',
 by Jean Baptiste Louis Clouet
 (c.1730-1790) 1787, with
 hand-coloured detail and border
 vignettes, four sheets, joined,
 94 x 120cm
 £300 - 500

Lot 485
 Reiner and Joshua Ottens,
 'Mare Germanicum a Tractus
 Maritimus retro Hibernian et
 Scotiam',
 engraved sea chart with
 coloured highlights and two
 pictorial cartouches c.1740,
 50 x 57.5cm
 £200 - 300

Lot 486
 Robert De Vaugondy,
 'Mappe Monde ou Carte
 Generale du Globe Tierrestre...'
 1752, with hand-coloured
 outlines,
 50 x 71.5cm
 £200 - 300



486



487

Lot 487

Samuel and Nathaniel Buck
 'THE NORTH-EAST PROSPECT OF LANCASTER'
 Hand-coloured engraving, published 1728
 plate mark 25 x 71cm
 £100 - 150



488

Lot 488

Samuel and Nathaniel Buck
 'THE SOUTH-EAST VIEW OF CARMARTHEN'
 Hand-coloured engraving
 plate mark 32 x 81cm
 £100 - 150



489

Lot 489

Samuel and Nathaniel Buck
 'THE NORTH-EAST PROSPECT OF RICHMOND,
 IN THE COUNTY OF YORK'
 Hand-coloured engraving, published 1749
 plate mark 31 x 81cm
 £100 - 150



490

Lot 490

Samuel and Nathaniel Buck
 'THE SOUTH PROSPECT OF PRESTON, IN THE COUNTY
 PALATINE OF LANCASTER'
 Hand-coloured engraving, published 1728
 plate mark 25.5 x 70cm
 £100 - 150



491

Lot 491

Samuel and Nathaniel Buck
 'THE NORTH-WEST PROSPECT OF THE CITY
 OF GLOUCESTER'
 Hand-coloured engraving, published 1734
 plate mark 31 x 80cm
 £100 - 150

Lot 492

Samuel and Nathaniel Buck
 'THE SOUTH-WEST PROSPECT OF THE CITY OF EXETER'
 Hand-coloured engraving, published 1736
 plate mark 31.5 x 80cm
 £100 - 150



492

Lot 493

Samuel and Nathaniel Buck
 'THE EAST PROSPECT OF LYNN-REGIS, IN THE COUNTY OF NORFOLK'
 Hand-coloured engraving, published in 1741
 plate mark 31.5 x 80cm
 £100 - 150



493

Lot 494

'Plan of the North Mymms Park Estate, in the Parishes of North Mymms and Ridge, in the County of Hertford, for sale by auction by Messrs. Beadel, 1870', with coloured detail of the two lots, scale marked in chains, 53 x 79cm, framed
 £100 - 200

Lot 495

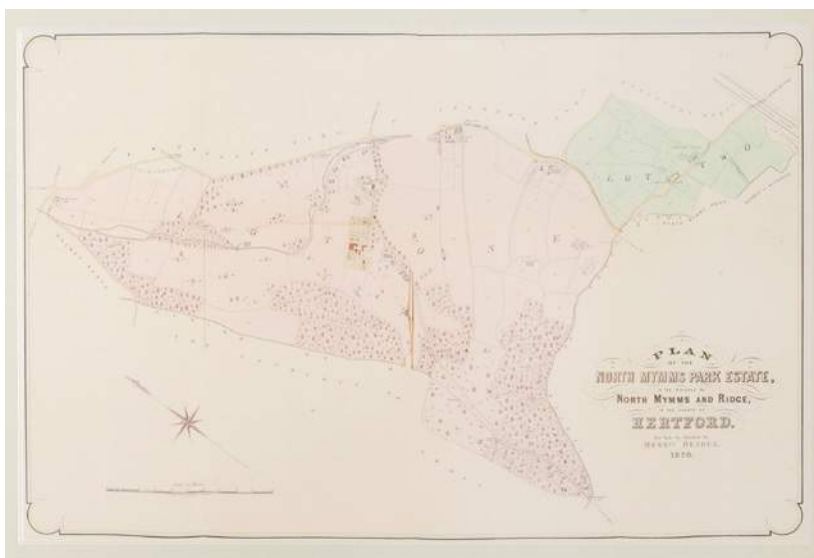
Thomas Sutherland, after Henry Alken
 'PHEASANT SHOOTING';
 'PARTRIDGE SHOOTING';
 'WILD DUCK SHOOTING';
 'GROUSE SHOOTING'
 The set of four aquatints, re-prints, originally published by Ackermann
 image 21 x 65cm (4)
 £200 - 300



495 part lot

Lot 496

Jan Kip, after Leonard Knyff
 'THE TOWER OF LONDON, COMMANDER IN CHIEF BY THE RT HONBLE ROBERT LD LUCAS';
 'SOMERSET HOUSE';
 'LAMBETH, HIS GRACE THE LORD ARCHBISHOP OF CANTERBURY'S PALACE';
 'ST JAMES'S HOUSE'
 Four engravings
 plate mark 35 x 47cm (4)
 £100 - 200



494



496 part lot



497

Lot 497
A reproduction black lacquered bracket clock, in the 18th century style, signed 'F.W. Elliott', with an arched brass dial and a three-train musical movement striking on gongs, the case with gilt and enamel chinoiserie scenes, 50cm high
£300 - 500



498

Lot 498
A mahogany table cabinet, 19th century, with four long drawers and brass carrying handles on a shaped plinth base, 43cm wide 26cm deep 31cm high
£150 - 250

Lot 499
A pair of modern table lamps, with brass acanthus capitals, stepped square bases and glass twist-turned columns, with shades, 58cm high (2)
£150 - 250

Lot 500
Buddy Kratzer (contemporary North American), 'Song Maker', a seated native North American lady, bronze, signed and numbered 5/20, 1967, 42cm high, including wooden plinth
£300 - 500



499



500



502



501

Lot 501
A bronze jug, probably Islamic, 13cm high, a pewter comport, 18.5cm high, a pewter bowl, a bronze pestle and mortar, a modern marble pestle and mortar, and an oak box, probably 19th century, carved in low relief with heraldic lions (8)
£100 - 200

Lot 502
A modern Chinese porcelain jardinière, a similar vase and cover, and a large modern wooden plinth, jardinière 36.5cm high vase 38cm high (4)
£80 - 150



503



504



505



506

Lot 503

A mahogany writing table, late 19th century, the inset leather top with a boxwood and ebony strung decorative border, above three wavy cock-beaded frieze drawers with applied decorative fluted mounts to each corner, a shaped apron and barley twist legs, united by low moulded stretchers with corner undertiers, 122cm wide 69cm deep 74cm high £300 - 500

Lot 504

A mahogany Pembroke table, George III and later, the drop-leaf top over a single frieze drawer, on square chamfered legs united by shaped stretchers, 91cm wide 76cm deep 69cm high £100 - 200

Lot 505

A reproduction mahogany bijouterie table, the glazed, hinged top on turned and fluted legs, 71cm wide 49cm deep 75cm high £80 - 120

Lot 506

A mahogany Pembroke table, late 19th century, the rectangular drop-leaf top over a single frieze drawer, square legs united by an 'X'-shaped stretcher on fluted block feet, 60cm wide 72cm deep 71cm high £100 - 200

Lot 507

A Victorian mahogany three-tier dumb waiter, the rectangular end supports with carved arched terminals over three graduated cock-beaded shelves on turned feet, 100cm wide 55cm deep 125cm high £200 - 400



507



508



509

Lot 508
 A Victorian mahogany table leaf stand,
 with applied carved mounts to take
 147cm leaves, raised on paw feet,
 71cm wide
 £150 - 250

Lot 509
 A 17th century-style stained wood
 elbow chair,
 19th century, with a high back,
 downswep arms and an overstuffed
 seat, united by turned stretchers,
 121cm high
 £80 - 120



510

Lot 510
 A George III oak linen press,
 now a hanging cupboard, the moulded
 cornice over two panelled doors within
 turned columns, the base with two
 dummy drawers, two short and one long
 drawer with ivory escutcheons, within
 panelled sides, on bracket feet,
 136cm wide
 59cm deep
 200cm high
 £300 - 500

Lot 511
 A George I-style ebonised demi-lune
 table,
 early 20th century, with gilt chinoiserie
 decoration on cabriole legs,
 57cm wide
 76cm deep
 109cm high
 £80 - 120



511

Lot 512

A Victorian mahogany
Pembroke table,
fitted with a single frieze drawer
on ring turned legs,
86cm wide
70cm high, and
an oak side table,
19th century, the rectangular
top over a frieze drawer and
four square section scrolled
legs,
76cm wide
50cm deep
72.5cm high (2)
£100 - 200



512 part lot



513

Lot 513

A George III mahogany
Pembroke table,
with a single frieze drawer on
square chamfered legs and
wooden castors,
69cm wide
71cm high
£200 - 400



514

Lot 514

A satinwood and mahogany
Pembroke table,
the strung and crossbanded
satinwood drop-leaf top over a
single drawer, on a mahogany
base, angular square legs united
by an 'X' stretcher and fluted
block feet,
75cm wide
60cm deep
79cm high
£200 - 400

Lot 515

A Regency mahogany sofa
table,
the drop-leaf top with 'plum
pudding' veneer and broad
crossbanding over opposing
frieze drawers, standard
end supports and strung
outscrolled legs,
86cm wide
68cm deep
70cm high
£400 - 600



515

Lot 516

A Regency mahogany and ebony strung cheval mirror,
within a turned frame with vase-shaped finials, supported on
swept fluted legs with scrolling shoulders and brass caps and
castors,
82cm wide
193cm high
£300 - 500



516



517



518



519



520

Lot 517
An 18th century-style faded mahogany pedestal desk, modern, fitted with nine drawers, fluted pillars on dwarf cabriole legs and pad feet, 138cm wide 81cm deep 76cm high £300 - 500

Lot 518
A mahogany bow front chest, 19th century, of two short and two long cock-beaded drawers, on turned feet, 90cm wide 51cm deep 84cm high £100 - 200

Lot 519
A late George III mahogany and rosewood crossbanded sofa table, with two real and two faux cock-beaded frieze drawers above rectangular pedestals, swept legs and cast brass leaf-capped castors, united by an arched centre stretcher, 139cm wide 76cm deep 71cm high £400 - 600

Lot 520
An 18th century-style oak side table, 20th century, the moulded shaped top above a shaped apron, a single frieze drawer, turned tapering legs and pad feet, 73cm wide 55cm deep 72cm high £100 - 200



521

Lot 521
A modern oak pedestal desk, in the 18th century style, the moulded and green tooled leather inset top, over nine drawers, with fluted pillars and plinth bases, 152cm wide 91cm deep 76cm high £200 - 300

Lot 522

An oak and fruitwood side table, 19th century, with earlier elements, the rectangular top with a moulded edge over a single panelled frieze drawer, slender turned legs and cup feet, united by low stretchers, 90cm wide 55cm deep 75cm high £200 - 300



522



523

Lot 523

A George III mahogany demi-lune card table, the fold-over top on turned and reeded legs, 91cm wide 45cm deep 73.5cm high £100 - 300



524



525

Lot 524

A reproduction mahogany desk, in the George II style, the raised back with shaped drawers and pigeonholes around a central door, over a leather writing surface, two frieze drawers, carved cabriole legs and claw and ball feet, 103cm wide 60cm deep 106cm high £200 - 400

Lot 525

An oak two-part chest of drawers, basically 17th century, having four long geometrically moulded drawers, within panelled sides on stile feet, 113cm wide 64cm deep 105cm high £500 - 800

Lot 526

A Flemish oak draw-leaf serving table, 17/18th century, with cleated ends, a fitted central frieze drawer above carved shaped brackets, baluster ring turned legs, squat bun feet and low stretchers, 180cm wide 76cm deep 80cm high £700 - 1,000



526



The Stables

527-542



527



528



530



531



532

Lot 527

James Ward, after Alexander Nasmyth
THE SPOTTESWOODE OX
Mezzotint, published by Anthony Cardon, 1803
47 x 64cm;
and another,
AN OX (2)
£100 - 150

Lot 528

Thomas Landseer, after Percy Forster
'THE CELEBRATED SHORT-HORNED COW BRACELET'
Mezzotint
46 x 55cm
£50 - 80

Lot 529

Spare lot

Lot 530

A plaster, bronze-effect, painted bust,
20th century, of a scantily-clad maiden standing in a
typical classical pose,
89cm high
£40 - 60

Lot 531

A Cantonese floor vase,
20th century, with all-over floral decoration, two oval
figural panels to opposing sides and relief worked
Buddhist lions and dragons to the neck,
62.5cm high
£80 - 120

Lot 532

An oak box seat hall settle,
late 19th century, the panelled back with a
shield-shaped crest flanking winged dragons and leaf
scrolls, to carved and scrolling open arms, the box seat
base with a scrolling leaf and flower panel, flanked by
medallion carved front pillars and scrolled front feet,
120cm wide
46cm deep
106cm high
£200 - 300



533

Lot 533

A joined oak coffer, in the 17th century style, the cleated plank top above a three-panel front, profusely carved with arches and lunettes of leaves and floral medallions, within chip carved and moulded front pillars and stile feet, 115cm wide
45cm deep
59cm high
£200 - 400



534

Lot 534

An oak three-panel coffer, late 17th century, with later all-over carving, on stile feet, 130cm wide
55cm deep
77cm high
£200 - 300

Lot 535

An oak open arm wainscot chair, late 17th century, the single panel back with a shaped top rail, a plank seat, turned legs and stump feet, united by a raised turned front stretcher, 64cm wide
101cm high
£150 - 250



535



536

Lot 536

A stained oak high-backed box seat hall settle, 19th century, the three-panel back with a moulded dentil cornice and fruiting traceries above lion monopodia arms, a box seat and bold paw front feet, 136cm wide
145cm high
£150 - 250

Lot 537

A pair of oak wainscot chairs,
19th century, each with a shaped top rail above a carved
centre panel, flanked by turned pillars, with shaped outswept
open arms, a panel seat, turned legs and stretchers (2)
£100 - 150



537

Lot 538

A late Victorian stained oak box seat hall settle,
with a shaped and carved top rail above two scrolling leaf
carved panels, lion's mask arms to a box seat and stump feet,
120cm wide
94cm high
£100 - 150



538

Lot 539

A pair of elm spindle-back Windsor armchairs,
20th century, with joined centre rails and dished seats above
turned legs and crinoline stretchers (2)
£200 - 300



539

Lot 540

An oak mule chest,
18th century and later, the lid with a gadrooned border,
enclosing a shallow compartment, the all-over carved front
fitted with three panelled single door cupboards above two
low drawers and stile feet,
145cm wide
51cm deep
85cm high
£250 - 350



540

Lot 541

A Jacobean-style, moulded oak panelled, straight front
chest,
18th century, in two parts, of four long drawers, on stump
feet,
104cm wide
55cm deep
106cm high
£200 - 300



541

Lot 542

A stained oak box seat hall settee,
19th century, the panelled and carved high back with an
arched and dentil carved cornice, open moulded arms on
leaf carved vase-shaped front pillars, to a moulded rising seat
above a three-panel carved frieze and fluted bun feet,
154cm wide
53cm deep
163cm high
£300 - 500



542

The Loggia and Gardens

543-565





543 detail



543

Lot 543
 An Italian rectangular Istrian marble table,
 19th century, the rectangular top carved with a central panel of an heraldic
 griffin within scrolling foliage and a fruiting vine border, the supports boldly
 carved with winged lion monopodia and acanthus foliage,
 200cm wide
 102cm deep
 95cm high
 £5,000 - 10,000



543 detail



544

Lot 544
An Italian marble table,
18th century, the matched circular top with an egg and dart border on three boldly carved lion monopodia,
with huge claw feet and stepped square bases.
97cm diameter
97cm high
£3,000 - 5,000



544 detail



545 detail



545 one of a pair

Lot 545
 A pair of Roman-style white marble pedestals, c.1800, of triangular tapering form, with armorials and motto 'Jay Bonne Cause', over scrolls, anthemia and a Vitruvian scrolled border, above the armorials are rams' heads to each corner, linked by ribbon-tied swags of flowers, now standing on two-tier stone pedestals, 130cm high (2)
 £10,000 - 15,000

The arms are for Thynne, probably Thomas Viscount Weymouth.



546



547



548



549

Lot 549
 A white marble garden seat, probably French, mid-19th century, the 'panelled back' with an arched crest centred with an oval medallion within dolphins and scrolls, over two panels of scrolling foliage and three panels, the arms carved with armorial shields over a slab seat, standard end supports, 171cm wide, 62cm deep, 153cm high, £3,000 - 5,000

Lot 546
 A mottled grey/pink marble column, Italian, 19th century, with a white marble square and turned capital and base, 132cm high, £1,000 - 2,000

Lot 547
 A verde antico marble column, probably 18th century, of reverse tapering form with a stepped and moulded Sienna marble capital and base, 134cm high, £500 - 1,000

Lot 548
 A circular carved marble basin, probably Italian, c.1600, carved with a panel of griffins, urns, dolphins and scrolling foliage below a rope twist border and a broad band of fluting below, standing on a rose marble column, 19th century, with a white marble plinth, bowl 79cm diameter, 37cm high, column 117cm high, £3,000 - 5,000



549 detail

Lot 550

A pair of wicker garden loungers with cushions, 20th century, 170cm long (2) £100 - 200



550

Lot 551

A suite of wicker furniture, 20th century, comprising: a two-seater settee, four armchairs, two stools and two circular tables, with cushions (9) £200 - 300



551

Lot 552

A pair of Chinese pottery planters, 20th century, the sides with moulded and painted landscapes, 43cm high (2) £100 - 200



552 part lot

Lot 553

A weathered marble oviform pedestal vase, with leaf and flower scrolled handles and leaf, vine and floral ribbons to the body, 52cm high £200 - 300



553



554 part lot



555



556

Lot 554
A pair of teak garden seats in the manner of Edwin Lutyens, 20th century, with arched backs and slatted seats, 200cm wide (2)
£400 - 600

Lot 555
A teak garden seat in the manner of Edwin Lutyens, 20th century, with an arched back and slatted seat, 200cm wide
£150 - 250

Lot 556
A teak garden seat, in the manner of Edwin Lutyens, 20th century, by Listers, with an arched back and slatted seat, 200cm wide
£150 - 250

Lot 557
A pair of Victorian glazed stoneware chimney pots, 111cm high, and another, 101cm high (3)
£100 - 200



557 part lot



558 part lot

Lot 558
A pair of marble Corinthian capitals, with carved decoration, 43cm high (2)
£200 - 400



559 part lot



560 part lot

Lot 559
Two white painted garden seats, modern, one with a high serpentine-shaped back, the other with an arched back, both with slatted seats, 190 and 160cm wide (2)
£200 - 300

Lot 560
Two white painted wooden garden seats, modern, with arched backs and slatted seats, 304 and 159cm wide (2)
£300 - 500

Lot 561
A white painted wooden garden seat, modern, with arched back and slatted seat, 304cm wide
£150 - 250

Lot 562
A pair of modern terracotta garden urns, 62cm high, and a pair of Chinese green-glazed planters and stands, 20th century, moulded with dragons, 69cm high (6)
£100 - 150

Lot 563
A pair of composition stone planters, of flared cylindrical shape, 82cm diameter, 62cm high (2)
£200 - 400

Lot 564
Six composition rectangular stone planters, modern, with basket work sides, 87cm long, 39cm wide (6)
£200 - 300



561

Lot 565
A set of four reconstituted stone urns, with moulded and part-reeded bodies on square pedestal bases, now painted, 38cm high (4)
£300 - 500



562 part lot



563



564 part lot



565 part lot

INDEX OF ARTISTS

B

Barry, ...	91
*Bentham-Dinsdale, John	395, 396, 397, 398, 399, 400, 401, 402
*Blanchard, Antoine	135
Brabazon Brabazon, Hercules	351
Buck, Samuel and Nathaniel	487, 488, 489, 490, 491, 492, 493
Buckler, John	70

C

Callow, Circle of John	352
Canaletto, Manner of	115, 410
Chambers, George	90
Clark, John, After Mornay	191
Clary, Jean-Eugène	6
*Coker, Peter	350
Condy, Circle of Nicholas	116
Cooper, Richard	403

D

Dahl, Circle of Michael	69
Davis, After William Henry	155
Davis, William Henry	469
de Breanski Snr., Alfred	68
de Hamilton, Carl Wilhelm	332
de Moucheron, Follower of Frederick	443
Dubourg, Matthew, After Mornay	191
Dusart, Cornelis	5

F

Fontainebleau, School of	471
--------------------------	-----

E

English School	1, 71, 72, 117, 193, 440
----------------	--------------------------

G

Gheeraerts the Younger, Follower of Marcus	382
Glauber, Johannes	17
Glover, John	439, 441
Grün	21

H

Harpignies, Henri-Joseph	152
Havell, Daniel, After Henry Salt	192
Huet, Circle of Jean-Baptiste	20

J

Jefferson, ...	465
----------------	-----

K

Kannemans, Christian Cornelis	334
Kip, Jan, After Leonard Knyff	496
Koekkoek Jr., Hermanus	333

L

Landseer, Thomas, After Percy Forster	528
Leader, Benjamin Williams	22
Leitch, Richard Principal	354
Lewis, George, After Sir William Allan	134

M

Macdonald, Daniel	153
*Maile, Ben	376

Malton, James	349
Marian, Aldo	405, 406, 407, 408, 409
Mercier, Philip	2
Mitford, Robert	336, 337, 338, 339, 340, 341
Monamy, Attributed to Peter	373
Monamy, Peter	88
Morier, Circle of David	92
Morris, Thomas, After George Garrard	133

N

Nattes, Jean Claude	150, 151
Nodder, Richard Polydore	73

O

Onofri, Attributed to Crescenzo	18
---------------------------------	----

P

Palamedes, Follower of Anthonie	189
Parker, Henry H	7
Pritchett, Circle of Edward	335
Pseudo Roestraten	19

R

Rathbone, John	375
Richmond, Circle of George	404
Roos, Circle of Philipp Peter	118
Rowlandson, After Thomas	348

S

Selby, Prideaux John	342, 343, 344, 345, 346, 347
Sherriff, Attributed to John	467
Simmons, William Henry	119
Spoede, Jean-Jacques	442
Spruyt, Johannes	3
Steell, Attributed to Gourlay	464
Steell, Gourlay	462, 463
Sutherland, Thomas, After Henry Alken	495

T

Thors, Joseph	178
Truman, J...	468
Tyrolean School	188

V

van Boucle, Attributed to Pieter	470
van Cuylenborch, Abraham	4
van de Velde the Younger, Circle of Willem	89
van Heil, Daniel	154
Van Houbraken, Niccolino	190

W

Ward, James, After Alexander Nasmyth	527
Whilbin, C...	353
Whitcombe, Thomas	374
Wilson, Thomas Freebairn	466
Wootton, John	179

Lots marked with a '*' may attract the Artist's Resale royalty charge at the rate of 4% of the hammer price.
This royalty, where applicable, will be charged to the purchaser.

GLOSSARY OF PICTURE CATALOGUING TERMS

A work catalogued with the forename(s) and surname of a recognised destination of an artist is or is probably a work by the artist, eg. David Cox. Nevertheless, intending buyers are reminded that while a full designation is our highest category or authenticity, no unqualified statement as to the authorship is made or intended. A full cataloguing does not necessarily imply a full warranty.

Attributed to David Cox

in our opinion a work of the period of the artist which may be in whole or in part the work of the artist.

Circle of David Cox

in our opinion a work from the period of the artist and showing his influence.

Follower of David Cox

in our opinion a work executed in the style of David Cox

After David Cox

in our opinion a copy of any date after a work by the artist

Signed/inscribed/dated

in our opinion the work has been signed/inscribed/dated by the artist

Bears/with signature, inscription, date

in our opinion the signature/inscription/date are not by the hand of the named artist.

The addition of a question mark (?) after any of the above cataloguing terms indicates an element of doubt.

A work catalogued as 'School' accompanied by the name of a place or country and a date means that in our opinion the work was executed at that time and in the location, eg. South Netherlands School, circa 1750.

All references to signatures, inscriptions and dates refer to the present state of the work, ie. as at the time of inspection for the purpose of cataloguing.

Condition reports are not included in the descriptions.

ARTIST'S RESALE RIGHT (ARR)

What is Artist's Resale Right?

Following a European Directive in 2006, the Artist's Resale Right entitles creators of original works of art to a royalty each time their work is resold, with the involvement of an auction house, for 1,000 Euros or more.

This right covers sales of work by living artists and also the beneficiaries and heirs of artists deceased within the last 70 years of the sale.

How are resale royalties calculated?

The artist's royalty depends on the hammer price (sale price without any VAT or Buyer's Premium). The higher the sale price of the artwork, the lower the overall royalty rate. The royalty is worked out according to a sliding scale from 4% to 0.25%.

Hammer Price	Royalty
From 0 to €50,000	4%
From €50,000.01 to €200,000	3%
From €200,000.01 to €350,000	1%
From €350,000.01 to €500,000	0.5%
Exceeding €500,000	0.25%

What is the qualifying threshold?

An artwork must sell for more than €1,000 to qualify for a royalty. The law defines the price threshold in Euros and, because the exchange rate between the two currencies changes daily, the equivalent in Pounds Sterling must be worked out according to the exchange rate on the date the artwork was sold.

What nationality must an artist be to qualify?

The Artist's Resale Right applies to the sale of artworks in the European Economic Area (EEA). The following countries are in the EEA:

Austria, Belgium, Bulgaria, Cyprus, Czech Republic, Denmark, Estonia, Finland, France, Germany, Greece, Hungary, Iceland, Ireland, Italy, Latvia, Liechtenstein, Lithuania, Luxembourg, Malta, Netherlands, Norway, Poland, Portugal, Romania, Slovak Republic, Slovenia, Spain, Sweden, United Kingdom.

Artists who are nationals of these countries are therefore generally eligible to receive resale royalties. The nationality criteria only applies to the artist and not to the beneficiaries or heirs.

Are all sales of artwork covered?

The Artist's Resale Right does not apply to all sales of artworks. A royalty is only due if the following conditions are met:

- the artwork is a copyright protected work of graphic or plastic art;
- it is sold for more than €1000;
- it is sold in the secondary market with the involvement of an art market professional (e.g. auction house);
- and it is sold in the UK or another country in the European Economic Area (EEA).

This royalty, where applicable, will be charged to the purchaser. It is exempt of VAT.

INFORMATION FOR BUYERS

Introduction

The following notes are intended to assist bidders and buyers, particularly those that are inexperienced or new to our salerooms. All of our auctions are governed by our Conditions of Business incorporating the Terms of Consignment (primarily applicable to sellers), the Terms of Sale (primarily applicable to bidders and buyers) and any notices that are displayed in our salerooms or announced by the auctioneer at the auction. Our Conditions of Business are available for inspection at our salerooms and the Terms of Sale are printed in the back of our auction catalogues. Our staff will be happy to help you if there is anything in our Conditions of Business that you do not fully understand.

Please make sure that you read our Terms of Sale set out in this catalogue or on our website carefully before bidding in the auction. If your bid is successful, you will be obliged to comply with our Terms of Sale.

Methods of Payment

Lots must be paid for before they are collected. For those attending the auction we ask that lots are paid for on the day of the sale. Methods by which we accept payment are detailed on our web site, including online payment upon receipt of your invoice, and these should be paid by 5pm on the Friday following the sale. We accept cash to an upper limit of 10,000 euros equivalent. We accept credit card payments to an upper limit of £5,000. Usually any cheques will need to be cleared before you can take the goods away.

Collection and storage

All lots should be paid for and collected by 5pm on the Friday following the sale. Commission bidders should check the success of their bids and arrange payment and collection within this time. Please note what the Terms of Sale say about collection and storage. Items not removed by 5pm on Friday may be removed at the purchaser's expense and storage charges of £10 as an administration fee and £2 per lot per day may be charged (plus vat). Please note that we will apply these charges strictly to Furniture purchased in our Homes and Interiors Sales.

Dispatch

We are rarely able to pack and dispatch purchases. A choice of shippers is detailed on our web site.

Agency

As auctioneers we usually act on behalf of the seller whose identity, for reasons of confidentiality, is not normally disclosed. If you buy at auction your contract for the goods is with the seller, not with us as auctioneer.

Estimates

Estimates are designed to help you gauge what sort of sum might be involved for the purchase of a particular lot. Estimates may change and should not be thought of as the sale price. The lower estimate may represent the reserve price (the minimum price for which a lot may be sold) and will not be below the reserve price. Estimates do not include the buyer's premium or VAT (where chargeable). Estimates are prepared some time before the auction and may be altered by a saleroom notice or announcement by the auctioneer before the auction of the lot. They are not definitive.

Buyer's Premium

The Terms of Sale oblige you to pay a buyer's premium at 22% on the hammer price of each lot purchased, except for our Fine Wine and Port auctions when it is 15%. In addition, VAT is charged on these premiums (see below).

VAT

Items in our catalogue may be marked with a dagger † or double dagger ‡, which indicates that VAT is payable by the buyer on the hammer price and the buyer's premium at either the standard rate (currently 20%) or a reduced rate (currently 5%), depending upon the legal requirements relating to that lot.

Lots which do not have either of the above symbols have no VAT payable on the hammer price. This is because such lots are sold using the Auctioneers' Margin Scheme. The VAT included within the premium is not recoverable as input tax.

Inspection of goods by the buyer

As we act on behalf of the seller, we are dependent on information provided by the seller about their goods. We may inspect lots and will act reasonably in taking a general view about them. However, we are normally unable to carry out detailed examinations of lots to check their condition in the way a buyer would do. You will have ample opportunity to inspect the goods. You must inspect and investigate lots that you might wish to bid for. **Please note carefully the exclusion of liability for the condition of lots set out in the Terms of Sale at clause 12.4.**

Condition Reports

We may be able to assist buyers unable to view by emailing a condition report, but these are based solely on our own opinion and are for guidance only and no responsibility is accepted for their accuracy. Intending buyers are strongly encouraged to view. Condition reports cannot be prepared on the day of the sale.

Electrical goods

These are sold as "antiques" only. If you buy electrical goods for use you must ask a qualified electrician to check them for compliance with safety regulations before you use them.

Export of goods

If you intend to export goods you must find out:

- whether an export licence is needed; and
- if there is a prohibition on importing goods of that character e.g. because the goods contain prohibited materials such as ivory.

Bidding

Bidders will be required to register with us before the auction starts. We reserve the right to impose a deadline prior to the auction by which you must register or by which we must receive a commission bid. If you wish to bid on high value lots this deadline may be several days before the auction in order to allow us sufficient time to carry out the necessary checks. Lots will be invoiced to the name and address on the registration form. You will need to provide us with proof of your identity in a form acceptable to us and such other information as we may require. Please enquire in advance about our arrangements for telephone or online bidding. Please note that we may refuse to register you if you do not provide us with all the information and documentation that we ask for or at our discretion.

Commission bidding

You may leave commission bids with us indicating the maximum amount to be bid against a lot (excluding the buyers' premium and/or any applicable VAT). We will execute commission bids as cheaply as possible having regard to the reserve (if any) and competing bids. If two buyers submit identical commission bids we may prefer the first bid received (where this can be reasonably ascertained). We recommend leaving commission bids online via our website, though please contact us about leaving bids by telephone or fax/email. All absentee bids should be received at least 30 minutes before the auction commences; we cannot guarantee to execute commission bids received after this time.

Telephone Bidding

If you are unable to come to the auction it may be possible to bid on the telephone for higher value lots. Please note that this service is for lots with an estimate of £500 or more. The number of lines is limited so we would urge serious telephone bidding only and ask that you be prepared to bid over the top estimate. It is advisable to leave a maximum covering bid in case we are not able to contact you by telephone. All lines must be booked and confirmed in writing before the day of the auction and preferably some time in advance. Telephone bidding involves many variables and whilst we take every care to ensure the smooth operation of this service, we cannot be held liable if your bids are missed for any reason.

Online Bidding

Any lots purchased via a live online bidding service will be subject to an additional commission charge on the hammer price payable by the bidder, in accordance with the rates specified by the online service. These charges are 3% plus VAT and will be payable to us on top of the Hammer Price and our buyers commission.

IMPORTANT NOTICES

Removal of lots

ALL lots are to be removed from the premises by **5.00pm at the latest on the Friday following each sale**. Sworders retain the right to remove lots remaining after this time into safe storage, for which a charge will be made.

Electrical Goods

All electrical goods offered in this sale have either been tested and certified safe or unsafe by an appropriately qualified electrician. All electrical goods certified safe must be re-commissioned by an appropriately qualified electrician and we recommend those certified safe are similarly re-commissioned.

Post 1950 Upholstered Furniture

All items of furniture included in this sale are offered for sale as works of art. The items may not comply with the Furniture and Furnishings (Fire) Safety Regulations 1988 and for this reason, they should not be used in a private dwelling.

Furniture made of Brazilian Rosewood (Dalbergia Negra)

To comply with CITES Regulations on Post-1947 furniture made of Brazilian Rosewood, all post-war rosewood furniture items have Article 10 certificates.

If you are purchasing rosewood furniture for commercial purposes and not solely for your own use, CITES regulations require you to obtain your own certificate. You would need to contact the Animal Health and Veterinary Laboratories Agency ('AHVLA') and, as part of the process of obtaining your document, it is a requirement that you have seen sight of the Sworders' certificate or are aware of its reference number.

It is therefore the responsibility of commercial buyers to ensure that they obtain a copy of the appropriate certificate, or the certificate reference number, after purchase from Sworders Fine Art Auctioneers. Items are marked with this sign §.

TERMS OF SALE

Both the sale of goods at our auctions and your relationship with us are governed by the Terms of Consignment (primarily applicable to sellers) the Terms of Sale (primarily applicable to bidders and buyers) and any notices displayed in the saleroom or announced by us at the auction (collectively, the "Conditions of Business"). The Terms of Consignment and Terms of Sale are available at our saleroom on request.

Please read these Terms of Sale carefully. Please note that if you register to bid and/or bid at auction this signifies that you agree to and will comply with these Terms of Sale.

Please note that these Terms of Sale relate to auctions held at our premises only. We have separate terms for online only auctions.

1. Definitions and interpretation

To make these Terms of Sale easier to read, we have given the following words a specific meaning:

"Auctioneer"	means GES & Sons Ltd trading as Sworders Fine Art Auctioneers, a company registered in England and Wales with registration number 6858916 and whose registered office is located at Cambridge Road, Stansted Mountfitchet, Essex CM24 8GE or its authorised auctioneer, as appropriate;
"Bidder"	means a person who places a bid for Goods at our auction;
"Buyer"	means the person who makes the highest bid for the Goods accepted by the Auctioneer;
"Commission"	means the commission that we charge you on the sale of the Goods as set out in Clause 5 below;
"Consumer"	means an individual acting for purposes which are wholly or mainly outside that individual's trade, business, craft or profession;
"Consumer Contracts Regulations"	means the Consumer Contracts (Information, Cancellation and Additional Charges) Regulations 2013;
"Deliberate Forgery"	means: (a) an imitation made with the intention of deceiving as to authorship, origin, date, age, period, culture or source; (b) which is described in the catalogue as being the work of a particular creator without qualification; and (c) which at the date of the auction had a value materially less than it would have had if it had been as described;
"FCA"	means the Financial Conduct Authority;
"Goods"	means the goods that you consign to us for sale at our auction;
"Hammer Price"	means the level of the highest bid for the Goods accepted by the Auctioneer by the fall of the hammer;
"Premium"	means the premium charged to the Buyer on the sale of the Goods in accordance with the Terms of Sale;
"Price"	means the total of the Hammer Price, Premium and any applicable VAT;
"Proceeds"	means the Price less the Commission, the Premium, any expenses incurred to your account and any applicable VAT;
"Reserve"	means the minimum price at which the Goods may be sold;
"Seller"	means the owner of the Goods and any agent who consigns the Goods for sale on the owner's behalf (if applicable);
"Terms of Consignment"	means these terms of consignment;
"Terms of Sale"	means the terms of sale for bidders or buyers at our auctions;
"Trader"	means a Seller who is acting for purposes relating to that Seller's trade, business, craft or profession, whether acting personally or through another person acting in the trader's name or on the trader's behalf (such as an agent and/or the Auctioneer);
"VAT"	means any value added tax or equivalent sales tax; and
"Website"	means our website available at www.sworders.co.uk .

In these Terms of Sale the words 'you', 'yours', etc. refer to you as the Buyer. The words "we", "us", etc. refer to the Auctioneer. Any reference to a 'Clause' is to a clause of these Terms of Sale unless stated otherwise.

2. Information that we are required to give to Consumers

- 2.1 A description of the main characteristics of each Lot as contained in the auction catalogue.
- 2.2 Our name, address and contact details as set out herein, in our auction catalogues and/or on our Website.
- 2.3 The price of the Goods and arrangements for payment as described in Clauses 4, 5, 7 and 8.
- 2.4 The arrangements for collection of the Goods as set out in Clauses 8 and 9.
- 2.5 Your right to return a Lot and receive a refund if the Lot is a Deliberate Forgery as set out in Clause 13.
- 2.6 We and Trader Sellers have a legal duty to supply any Lots to you in accordance with these Terms of Sale.

2.7 If you have any complaints, please send them to us directly at the address set out on our Website.

3. Bidding procedures and the Buyer

- 3.1 You must register your details with us before bidding and provide us with any requested proof of identity and billing information, in a form acceptable to us. You must also satisfy any security arrangements we have in place before entering the auction room to view or bid.
- 3.2 We strongly recommend that you attend the auction in person. You are responsible for your decision to bid for a particular Lot. If you bid on a lot, including by telephone and online bidding, or by placing a commission bid, we assume that you have carefully inspected the Lot and satisfied yourself regarding its condition.
- 3.3 If you instruct us in writing, we may execute commission bids on your behalf. Neither we nor our employees or agents will be responsible for any failure to execute your commission bid, unless our failure to do so is unreasonable.

4. The purchase price

As Buyer, you will pay:

- a. the Hammer Price;
- b. a premium of 22% plus VAT of the Hammer Price or 15% plus VAT for our Fine Wine and Port Auction;
- c. any artist's resale right royalty payable on the sale of the Lot; and
- d. any VAT due.

5 VAT

- 5.1 You shall be liable for the payment of any VAT applicable on the Hammer Price and premium due for a Lot. Please see the symbols used in the auction catalogue for that Lot and the "Information for Buyers" in our auction catalogue for further information.
- 5.2 We will charge VAT at the current rate at the date of the auction.

6. The contract between you and the Seller

- 6.1 The contract for the purchase of the Lot between you and the Seller will be formed when the hammer falls accepting the highest bid for the Lot at the auction.
- 6.2 You may directly enforce any terms in the Terms of Consignment against a Seller to the extent that you suffer damages and/or loss as a result of the Seller's breach of the Terms of Consignment.
- 6.3 If you breach these Terms of Sale, you may be responsible for damages and/or losses suffered by a Seller or us. If we are contacted by a Seller who wishes to bring a claim against you, we may in our discretion provide the Seller with information or assistance in relation to that claim.
- 6.4 We normally act as an agent only and will not have any responsibility for default by you or the Seller (unless we are the Seller of the Lot).

7. Payment

- 7.1 Immediately following your successful bid on a Lot you will:
 - 7.1.1 give to us, if not already provided to our satisfaction, proof of identity in a form acceptable to us (and any other information that we require in order to comply with our anti-money laundering obligations); and
 - 7.1.2 pay to us the Total Amount Due in any way that we agree to accept payment. Note there is an upper limit of 10,000 euros equivalent for payments in cash.
- 7.2 If you owe us any money, we may use any payment made by you to repay these debts.

8. Title and collection of purchases

- 8.1 Once you have paid us in full the Total Amount Due for any Lot, ownership of that Lot will transfer to you. You may not claim or collect a Lot until you have paid for it.
- 8.2 You will (at your own expense) collect any Lots that you have purchased and paid for not later than 5pm on the Friday following the auction.
- 8.3 If you do not collect the Lot within this time period, you will be responsible for any reasonable removal and storage charges in relation to that Lot.
- 8.4 Risk of loss or damage to the Lot will pass to you when you (or your agents) take physical possession of the Lot.
- 8.5 If you do not collect the Lot that you have paid for within thirty days after the auction, we may sell the Lot. We will pay the proceeds of any such sale to you, but will deduct any storage charges or other sums that we have incurred in the storage and sale of the Lot. We reserve the right to charge you a selling commission at our standard rates on any such resale of the Lot.

9. Remedies for non-payment or failure to collect purchases

- 9.1 Please do not bid on a Lot if you do not intend to buy it. If your bid is successful, these Terms of Sale will apply to you. This means that you will have to carry out your obligations set out in these Terms of Sale. If you do not comply with these Terms of Sale we may (acting on behalf of the Seller and ourselves) pursue one or more of the following measures:
 - 9.1.1 take action against you for damages for breach of contract;
 - 9.1.2 reverse the sale of the Lot to you and/or any other Lots sold by us to you;

Where two or more commission bids at the same level are recorded we have the right to prefer the first bid made (where this can be reasonably ascertained).

- 3.4 The Bidder placing the highest bid for a Lot accepted by the Auctioneer will be the Buyer at the Hammer Price. Any dispute about a bid will be settled at our discretion. We may reoffer the Lot during the auction or may settle the dispute in another way. We will act reasonably when deciding how to settle the dispute.
- 3.5 Bidders will be deemed to act as principals, even if the Bidder is acting as an agent for a third party.
- 3.6 We may bid on Lots on behalf of the Seller up to one bid below the Reserve.
- 3.7 We may refuse to accept any bid if it is reasonable for us to do so.
- 3.8 Bidding increments will be at our sole discretion (but will be in line with standard auction practice).

9.1.3 resell the Lot by auction or private treaty (in which case you will have to pay any difference between the price you should have paid for the Lot and the price we sell it for as well as the charges outlined in Clause 8.5). Please note that if we sell the Lot for a higher amount than your winning bid, the extra money will belong to the Seller;

9.1.4 remove, store and insure the Lot at your expense;

9.1.5 if you do not pay us within **five business days** of your successful bid, we may charge interest at a rate not exceeding 1.5% per month on the total amount due;

9.1.6 keep that Lot or any other Lot sold to you until you pay the Total Amount Due;

9.1.7 reject or ignore bids from you or your agent at future auctions or impose conditions before we accept bids from you; and/or

9.1.8 if we sell any Lots for you, use the money made on these Lots to repay any amount you owe us.

9.2 We will act reasonably when exercising our rights under Clause 9.1. We will contact you before exercising these rights and try to work with you to correct any non-compliance by you with these Terms of Sale.

10. Health and safety

Although we take reasonable precautions regarding health and safety, you are on our premises at your own risk. Please note the lay-out of the premises and security arrangements. Neither we nor our employees or agents are responsible for the safety of you or your property when you visit our premises, unless you suffer any injury to your person or damage to your property as a result of our, our employees' or our agents' negligence.

11. Warranties

11.1 The Seller warrants to us and to you that:

11.1.1 the Seller is the true owner of the Lot for sale or is authorised by the true owner to offer and sell the lot at auction;

11.1.2 the Seller is able to transfer good and marketable title to the Lot to you free from any third party rights or claims; and

11.1.3 as far as the Seller is aware, the main characteristics of the Lot set out in the auction catalogue (as amended by any notice displayed in the saleroom or announced by the Auctioneer at the auction) are correct.

11.2 If, after you have placed a successful bid and paid for a Lot, any of the warranties above are found not to be true, please notify us in writing. Neither we nor the Seller will be liable to pay you any sums over and above the Total Amount Due and we will not be responsible for any inaccuracies in the information provided by the Seller except as set out below.

11.3 Please note that many of the Lots that you may bid on at our auction are second-hand.

11.4 If a Lot is not second-hand and you purchase the Lot as a Consumer from a Seller that is a Trader, a number of additional terms may be implied by law in addition to the Seller's warranties set out at Clause 11.1 (in particular under the Consumer Rights Act 2015). These Terms of Sale do not seek to exclude your rights under law as they relate to the sale of these Lots.

11.5 Save as expressly set out above, all other warranties, conditions or other terms which might have effect between the Seller and you, or us and you, or be implied or incorporated by statute, common law or otherwise are excluded.

12. Descriptions and condition

12.1 Our descriptions of the Lot will be based on: (a) information provided to us by the Seller of the Lot (for which we are not liable); and (ii) our opinion (although it is likely that we will not be able to carry out a detailed inspection of each Lot).

12.2 We will give you a number of opportunities to view and inspect the Lots before the auction. You (and any independent consultants acting on your behalf) must satisfy yourself about the accuracy of any description of a Lot. We shall not be responsible for any failure by you or your consultants to properly inspect a Lot.

12.3 Representations or statements by us as to authorship, genuineness, origin, date, age, provenance, condition or estimated selling price involve matters of opinion. We undertake that any such opinion will be honestly and reasonably held and accept liability for opinions given negligently or fraudulently.

12.4 Please note that Lots (in particular second-hand Lots) are

unlikely to be in perfect condition. Lots are sold "as is" (i.e. as you see them at the time of the auction). Neither we nor the Seller accept any liability for the condition of second-hand Lots or for any condition issues affecting a Lot if such issues are included in the description of a Lot in the auction catalogue (or in any saleroom notice) and/or which the inspection of a Lot by the Buyer ought to have revealed.

13. Deliberate Forgeries

13.1 You may return any Lot which is found to be a Deliberate Forgery to us within 30 days of the auction provided that you return the Lot to us in the same condition as when it was released to you, accompanied by a written statement identifying the Lot from the relevant catalogue description and a written statement of defects.

13.2 If we are reasonably satisfied that the Lot is a Deliberate Forgery we will refund the money paid by you for the Lot (including any Premium and applicable VAT) provided that if:

13.2.1 the catalogue description reflected the accepted view of experts as at the date of the auction; or

13.2.2 you personally are not able to transfer good and marketable title in the Lot to us, you will have no right to a refund under this Clause 13.2.

13.3 If you have sold the Lot to another person, we will only be liable to refund the price that you paid for the Lot. We will not be responsible for repaying any additional money you may have made from selling the Lot.

13.4 Your right to return a Lot that is a Deliberate Forgery does not affect your legal rights and is in addition to any other right or remedy provided by law or by these Terms of Sale.

14. Our liability to you

14.1 We will not be liable for any loss of opportunity or disappointment suffered as a result of participating in our auction.

14.2 In addition to the above, neither we nor the Seller shall be responsible to you and you shall not be responsible to the Seller or us for any other loss or damage that any of us suffer that is not a foreseeable result of any of us not complying with the Conditions of Business. Loss or damage is foreseeable if it is obvious that it will happen or if at the time of the sale of the Lot, we, you and the Seller knew it might happen.

14.3 Subject to Clause 14.4, if we are found to be liable to you for any reason (including, amongst others, if we are found to be negligent, in breach of contract or to have made a misrepresentation), our liability will be limited to the total purchase price paid by you to us for any Lot.

14.4 Notwithstanding the above, nothing in these Terms of Sale shall limit our liability (or that of our employees or agents) for:

14.4.1 death or personal injury resulting from negligence (as defined in the Unfair Contract Terms Act 1977);

14.4.2 fraudulent misrepresentation; or

14.4.3 any liability which cannot be excluded by law.

15. Notices

15.1 All notices between you and us regarding these Terms of Sale must be in writing and signed by or on behalf of the party giving it.

15.2 Any notice referred in Clause 15.1 may be given:

15.2.1 by delivering it by hand;

15.2.2 by first class pre-paid post or Recorded Delivery; or

15.2.3 by email, provided that receipt of the email is acknowledged by the recipient.

15.3 Notices must be sent:

15.3.1 by hand or registered post:

a. to us, at our address set out in these Terms of Sale or at our registered office address appearing on our Website; and

b. to you, at the last postal address that you have given to us as your contact address in writing; or

15.3.2 by email:

a. to us, by sending the notice to the following email address: auctions@sworder.co.uk

b. to you, by sending the notice to any email address that you have given to us as your contact email address in writing.

15.4 Notices will be deemed to have been received:

15.4.1 if delivered by hand, on the day of delivery;

15.4.2 if sent by first class pre-paid post or Recorded Delivery, two business days after posting, exclusive of the day of posting; or

15.4.3 if sent by email, at the time of transmission unless sent after 17.00 in the place of receipt in which case they will be deemed to have been received on the next business day in the place of receipt (provided that receipt is acknowledged by the recipient).

15.5 Any notice or communication given under these Terms of Sale will not be validly given if sent by fax, email, any form of messaging via social media or text message.

16. Data Protection

We will hold and process any personal data in relation to you in accordance with our current privacy policy, a copy of which is available on our website.

17. General

17.1 We may, acting reasonably, refuse admission to our premises or attendance at our auctions by any person.

17.2 We act as an agent for our Sellers. The rights we have to claim against you for breach of these Terms of Sale may be used by either us, our employees or agents, or the Seller, its employees or agents, as appropriate. Other than as set out in this Clause, these Terms of Sale are between you and us and no other person will have any rights to enforce any of these Terms of Sale.

17.3 We may use special terms in the catalogue descriptions of particular Lots. You must read these terms carefully along with any glossary provided in our auction catalogues.

17.4 Each of the clauses of these Terms of Sale operates separately. If any court or relevant authority decides that any of them are unlawful, the remaining clauses will remain in full force and effect.

17.5 We may change these Terms of Sale from time to time, without notice to you. Please read these Terms of Sale carefully, as they may be different from the last time you read them.

17.6 Except as otherwise stated in these Terms of Sale, each of our rights and remedies are: (a) are in addition to and not exclusive of any other rights or remedies under these Terms of Sale or general law; and (b) may be waived only in writing and specifically. Delay in exercising or non-exercise of any right under these Terms of Sale is not a waiver of that or any other right. Partial exercise of any right under these Terms of Sale will not preclude any further or other exercise of that right or any other right under these Terms of Sale. Waiver of a breach of any term of these Terms of Sale will not operate as a waiver of breach of any other term or any subsequent breach of that term.

17.7 These Terms of Sale and any dispute or claim arising out of or in connection with them (including any non-contractual claims or disputes) shall be governed by and construed in accordance with the laws of England and the parties irrevocably submit to the exclusive jurisdiction of the English courts.

These terms are based upon the recommended terms of sale by the Society of Fine Art Auctioneers and Valuers

VAT REGULATIONS

We will invoice under the standard VAT rules and all lots in this auction will be sold VAT inclusive. This means that the hammer price will include VAT. On top of hammer, will be added buyer's premium, VAT on buyer's premium and (where relevant) Artist Resale Rights on certain paintings.

If you are:

A non VAT registered UK or EU buyer - no VAT refund is possible.

UK VAT registered buyer - subject to HMRC's rules, you can reclaim the VAT on the hammer price and on buyer's premium through your own VAT return.

EU VAT registered buyer - if you provide us with your EU VAT number we will not charge VAT on the buyer's premium. We will also refund the VAT on the hammer price if you ship the lot from the UK and provide us with proof of shipping within three months.

NON EU buyer - if you export the lots within three months, and meet the necessary conditions set by HMRC, we will refund VAT on the hammer price and buyer's premium. Please ask us for details if required.





www.sworder.co.uk

The Stansted Auction Rooms
Cambridge Road
Stansted Mountfitchet
Essex CM24 8GE
Tel 01279 817778
Fax 01279 817779
Email auctions@sworder.co.uk

Hertford Office
42 St Andrew Street
Hertford SG14 1JA
Tel 01992 583508
Fax 01992 586074
Email hertfordoffice@sworder.co.uk

Kent Office
Tel 01732 757675
Email kent@sworder.co.uk



In association with:

HICKMAN · SHEARER

