

EST. 1782  
**sworders**

FINE ART AUCTIONEERS

**20th Century Design**

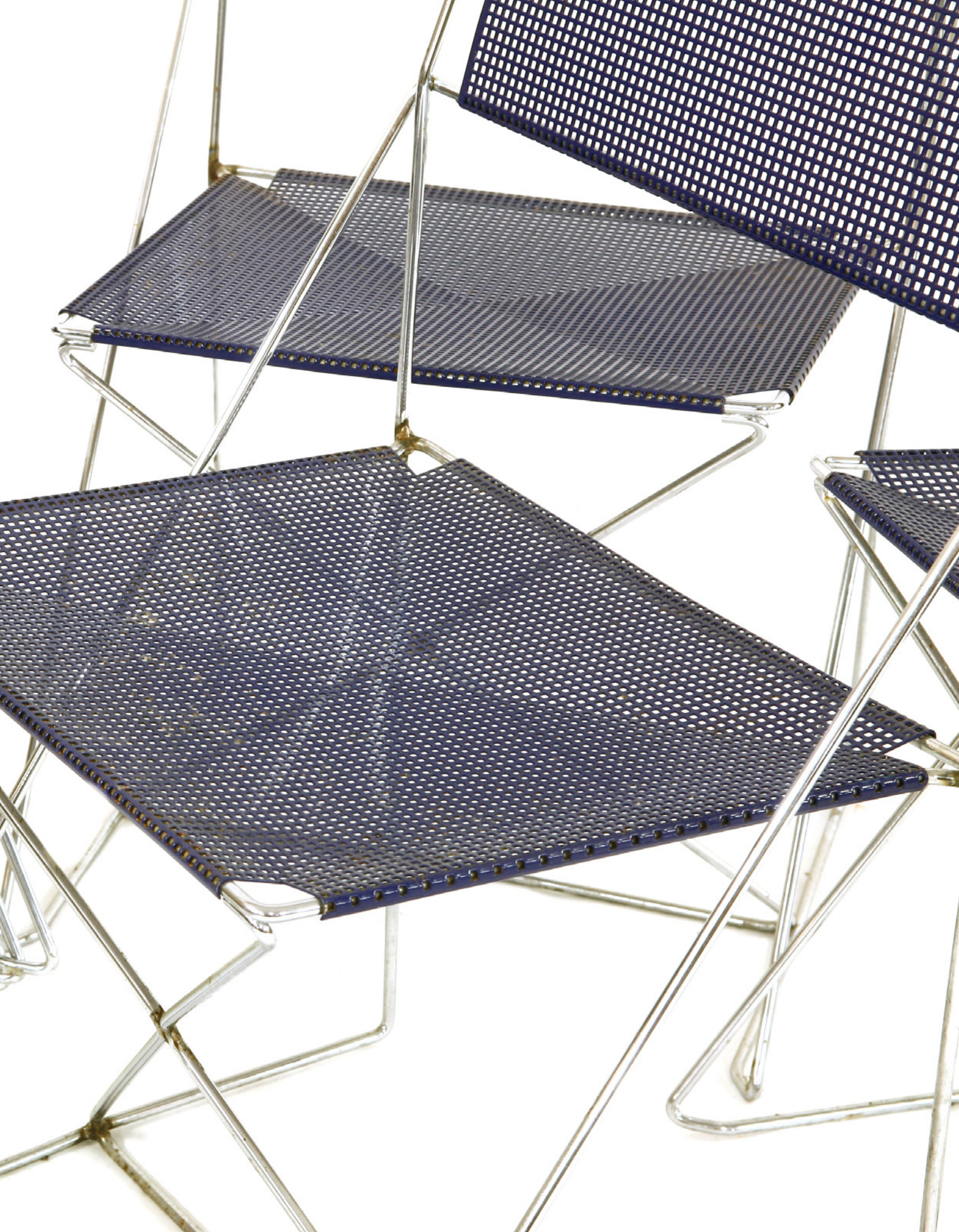
Tuesday 29 January 2019 at 10am















# OUT OF THE ORDINARY

Tuesday 12 February 2019

Contact: [markwilkinson@sworder.co.uk](mailto:markwilkinson@sworder.co.uk) | 01732 757675



# 20TH CENTURY DESIGN

at the Stansted Mountfitchet Auction Rooms

Tuesday 29 January 2019 at 10am



## ORDER OF SALE

Lots 1 - 158	Arts & Crafts and Art Nouveau Furniture and Objects
Lots 163 - 329	Art Deco Furniture, Objects and Lighting
	<i>10-minute break</i>
Lots 330 - 734	Post-War and Modern Objects, Furniture and Lighting

## VIEWING TIMES

Friday 25 January	9am - 5pm
Sunday 27 January	10am - 1pm
Monday 28 January	9am - 5pm
Tuesday 29 January	From 9am

## ONLINE BIDDING

Bid live at [www.sworder.co.uk](http://www.sworder.co.uk) (3% surcharge)

## FURTHER INFORMATION

Contact: **John Black**

Telephone: 01279 817778

Email: [auctions@sworder.co.uk](mailto:auctions@sworder.co.uk)

To obtain more images and  
condition reports for lots in  
this catalogue, please visit our  
website [www.sworder.co.uk](http://www.sworder.co.uk)





# ARTS & CRAFTS AND ART NOUVEAU FURNITURE AND OBJECTS

1-158



1

## Lot 1

An Aesthetic ebonised and enamelled mantel clock, after a design by Lewis Day, the enamelled dial centred with plums and Arabic numerals, striking the half hour, 19.5cm wide 32.2cm high £200 - 300



2

## Lot 3

A walnut and inlaid Gothic Revival dressing table, c.1870, in the manner of Charles Bevan, with a shaped mirror, cylinder compartments and pedestal cupboards raised on a plinth base, 158cm wide 50cm deep 165cm high £300 - 500



3

## Lot 5

An Aesthetic pottery plaque, painted with a maiden holding a fan beneath an orange tree, signed with initials 'J N G', 11.5 x 15.5cm, in a velvet frame £100 - 150

## Lot 6

A 'Four O'Clock' tea table, c.1895, by Liberty and Co., the Japanese hardwood circular tray top decorated with oriental foliage, on a folding stand, with an ivory label 'Liberty and Co.', 60cm high 44.5cm diameter £500 - 700

## Lot 7

A copper kettle and burner and stand, the squat kettle with a wicker stand, stamped 'WAS Benson', the brass stand stamped 'WAS Benson', 85cm overall 71cm high (3) £250 - 350

## Lot 2

A Minton tile-mounted jardinière stand, the cast frame mounted with four John Moyr Smith tiles: Morte d'Arthur, Guinevere, Gareth and Enid, 20.5cm wide 20.5cm deep 20cm high £120 - 180



4

## Lot 4

An Arts and Crafts copper and brass adjustable standard lamp, early 20th century, on a tripod base with hairy paw feet, converted to electricity, 150cm high £100 - 200



5



6



6 tray top



7





**Lot 8**

A rare mahogany and satinwood cabinet, designed by W A S Benson for Morris & Co., with marble tops, the central bow front cabinet mounted with elaborate gilt brass mounts opening to reveal a single shelf, the sides with glazed and mounted cupboards, each enclosing two shelves raised on tapering legs with brass caps, 135cm wide 56cm deep 111cm high £10,000 - 15,000

For similar examples, see Pauline Agius, 'British Furniture 1880-1915', Antique Collectors' Club 1978, p 112 and Ian Hamerton, 'W A S Benson: Arts and Crafts Luminary and Pioneer of Modern Design', Antique Collectors' Club, 2005, p.159, pl.141-142A and p.170.





9



10

**Lot 9**  
A set of six William Birch oak dining chairs, with reupholstered seats, with solid backs and ring turned supports, and an armchair (7)  
£600 - 800

**Lot 10**  
A mahogany bedside cupboard, the shaped back rail over a cupboard carved with a fruit tree,  
43cm wide  
37cm deep  
85cm high  
£120 - 180



11

**Lot 11**  
An oak Thebes stool, retailed by Liberty & Co., replaced slat and missing a support,  
35cm wide  
31cm deep  
36.6cm high  
£800 - 1,200

For an identical stool, see Daryl Bennett, 'Liberty's Furniture 1875-1915: The Birth of Modern Interior Design', Antique Collectors' Club, p.97. pl.4.16.

**Lot 12**  
A Thonet stained beechwood side table, with a pierced undertier, unmarked,  
58.5cm wide  
38.5cm deep  
70cm high  
£150 - 250

**Lot 13**  
'If Music Be The Food Of Love Play On', Twelfth Night, Act 1, Scene 11-13, a silk and needlework panel, possibly Morris & Co., depicting lovers on a terrace,  
68 x 52cm, in a gilt frame  
£300 - 500

**Lot 14**  
A William Birch mahogany inlaid chair, after a George Walton design,  
61.5cm wide  
114cm high  
seat 45cm high  
£250 - 350



12



13



14





15



16



17

**Lot 15**

After George Frederick Wall OM RA  
(1817-1904)

SIR GALAHAD

Mezzotint, with touches of line, by  
D A Wehrschmidt, published by the  
Gainsborough Gallery 1898,  
88 x 60cm in an oak mount and frame,  
labelled *Christopher Wood*  
£150 - 250



18

**Lot 16**

A mahogany wall shelf,  
centred with a cupboard,  
mounted with a coloured  
lithograph of two ladies,  
94cm wide  
17.5cm deep  
86cm high  
£150 - 250



19 open



19

**Lot 17**

An Aesthetic oak and  
enamelled mantel clock,  
after a design by Lewis  
Day, the enamelled dial  
centred with flowers and  
Arabic numerals,  
20cm wide  
34cm high  
£200 - 300

**Lot 18**

Three Arts and Crafts  
copper dishes,  
with various embossed  
and incised details,  
23, 26 and 28cm  
diameter (3)  
£120 - 150

**Lot 19**

An American Aesthetic Movement gilt and silvered electroplated easel mirror,  
by the Meriden Britannia Company, dated 1876, the whole decorated with floral panels, the circular pierced  
cresting depicting cupids watering a garden, the central panel opening to reveal a mirror and two further  
mirrored plates, stamped manufacturer's mark and patent number '182655' and dated '26 Sept 1876',  
43cm wide  
51cm high  
£800 - 1,200





20



21



22

**Lot 20**

A Victorian silver-mounted cut-glass claret jug, by Walter Thornhill, London, 1881, with a Dr Christopher Dresser inspired angular handle, etched with a crest and monogram, the lower part hobnail cut, 22.5cm high  
£250 - 300

**Lot 21**

An Edwardian silver coffee pot, by Heath & Middleton, Birmingham, 1907, inspired by Dr Christopher Dresser, 22cm high  
£200 - 300

**Lot 22**

A Scottish silver-mounted glass decanter, by Hamilton & Inches of Edinburgh, 24cm high  
£80 - 120



23



24



25

**Lot 23**

A set of six Liberty & Co. Chinese demitasse spoons, in a fitted case, gilt embossed 'Liberty & Co.', 8.8cm long  
£80 - 120

**Lot 24**

A set of six Continental Art Nouveau coffee spoons, with pierced floral terminals, 10.5cm long, cased  
£200 - 300

**Lot 25**

A set of six silver and enamel teaspoons, William Gallimore & Sons, Sheffield, 1930, the stems modelled as flowers, 11.2cm long, in a fitted case  
£150 - 200

**Lot 26**

A Secessionist silver cigarette case, 800 standard, embossed with stylised designs, 6.5cm wide, 8.5cm high, and a Danish desk seal, possibly maker's mark for Holger Fischer, 830 standard, and 9.5cm high (2)  
£100 - 150

**Lot 27**

An American silver tyg, by Tiffany & Co., of baluster form with triple handles, 7½ pints, numbered '15466 2450', 20cm high  
£800 - 1,200

**Lot 28**

A silver-plated lemon squeezer, by Hukin & Heath, stamped '6010' and 'Rd.No.203233', the hinged body modelled as a lemon with a screw squeezer, raised on a high stand with a dished centre, 29.5cm high  
£80 - 120



26



27



28



**Lot 29**

A pair of electroplated dachshund knife rests, probably Continental, 8cm long (2)  
£60 - 80



29

**Lot 30**

An Aesthetic Movement electroplated tray, of quatrefoil outline, engraved with a heron, numbered '2046', 31cm wide  
£80 - 120



30



31



32



33

**Lot 31**

A silver-plated six-division toast rack, after a design by Dr Christopher Dresser, stamped number '298', 20cm wide  
£100 - 150

**Lot 32**

A silver-plated sugar bucket and shovel, after a design by Dr Christopher Dresser, stamped 'Walker and Hall Sheffield', 12cm high  
£80 - 120

**Lot 34**

A student's lamp, by Barratt & Sons, Piccadilly, 38cm high  
£80 - 120

**Lot 35**

A pair of WMF-style shouldered vases, each with a Mucha mask, of square tapering form, with brass liners, 25cm high (2)  
£200 - 300

**Lot 36**

A WMF preserve basket, with pierced designs, a swing handle and a clear glass liner, 14cm high  
£80 - 120

**Lot 37**

A chamberstick, by Hukin & Heath, in the style of Christopher Dresser, stamped and numbered '9542', with a snuffer and scone, 15cm high  
£80 - 120



34



35



36



37





38

**Lot 38**

A walnut four-division canterbury, probably after a design by E W Godwin, 45cm wide  
33.5cm deep  
44.8cm high  
£400 - 600



39

**Lot 40**

A Liberty & Co. oak desk, designed by Leonard Wyburd (1865-1958), the pediment with an hinged top revealing three compartments, with a central hinged and leather-mounted drop-down slope, with a drawer and cabinet flanking, mounted with an heart-shaped escutcheon and with strapwork and hoop handles, shelves to the side, *labelled to the back 'Liberty & Co. Ltd. London'*, 148cm wide  
42.5cm deep  
132.5cm high  
£400 - 600



41

**Lot 41**

An Arts and Crafts copper fire surround, the hood embossed with a lion rampant, flanked with shields and square 'rivet' details, with two implement hooks, 109.5cm wide  
103cm high  
45 x 68cm aperture  
£400 - 600



40





42

**Lot 42**

A 'Saville' mahogany armchair,  
designed by George Jack for Morris & Co.,  
with original upholstery,  
66cm wide  
22cm deep  
92cm high  
seat 36cm high  
£300 - 500



43

**Lot 43**

An Arts and Crafts oak bookcase,  
with a glazed cupboard over two shelves  
and a slatted undertier,  
78.5cm wide  
27cm deep  
169cm high  
£150 - 250



44

**Lot 44**

An oak and metal-mounted student's desk,  
of tapering form, probably Liberty & Co., with a  
pierced three-quarter gallery over a shaped front,  
an heart-shaped escutcheon and fitted interior over  
two shelves,  
75cm wide  
40cm deep  
130.5cm high  
£250 - 350

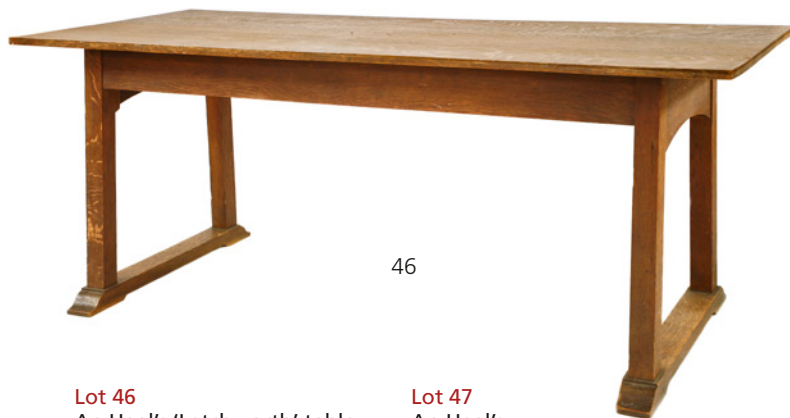
**Lot 45**

An oak Arts and Crafts dresser,  
designed by Ambrose Heal for Heal and Son,  
the wide cornice over central shelves fronted with  
cupboards, over two drawers and cupboards below,  
with hammered hinges and latches, on turned  
supports united with stretchers,  
165cm wide  
197cm high  
£1,500 - 2,000



45





46

**Lot 46**

An Heal's 'Letchworth' table, designed by Ambrose Heal, the plain top on sledge feet, labelled 'Heal and Son, Maker of Bedroom Furniture, London W', 183.5cm wide 75cm deep 76.5cm high £400 - 600



47

**Lot 47**

An Heal's 'Letchworth' oak child's elbow chair, with a rush seat, 69cm high £100 - 150

**Lot 48**

An oak bureau bookcase, designed by Ambrose Heal for Heal and Son, the flat wide cornice over a glazed cupboard with central arched panels, opening to shelves over the slope front, opening to reveal a fitted interior, over four short drawers and cupboard below, with heart-shaped escutcheons, ring handles and strap hinges, 112cm wide 46.5cm deep 192cm high £1,500 - 2,500



48

**Lot 49**

A pair of 'Fine Feathers' oak bedroom chairs, designed by Ambrose Heal for Heal and Son, each with an arched top rail, a shaped splat with heart-shaped pierced detail and a rush seat (2) £300 - 500

After training as a cabinetmaker, Ambrose Heal joined the family bedding business in Tottenham Court Road in 1893. He became involved with the Art Worker's Guild and the Arts and Crafts Exhibition Society and was inspired to create furniture designs which were initially made for him by Ashbee's Guild of Handicrafts. In 1898, his factory was moved to its definitive position at the end of Alfred Mews, where he produced his own furniture and, in particular, four new bedroom suites including the 'Fine Feathers' suite.



49





50 detail

**Lot 50**

**An oak 'Fine Feathers' pier mirror,**  
 designed by Ambrose Heal for Heal and Son,  
 the arched top inlaid in rosewood and pewter  
 with a peacock, with a rectangular plate,  
 73cm wide  
 160.5cm high  
**£1,500 - 2,000**

This pier mirror is one of the rarest parts of the 'Fine Feathers' suite and Oliver Heal records only seven examples being sold between 1900 and 1907. Featuring the stylised peacock in pewter inlay and with curves reminiscent of Charles Voysey, this early Ambrose Heal design reflects the variety of influences that he was absorbing at the time and his own unique interpretation, which resulted in one of the finest Arts and Crafts bedroom suites. First exhibited at the Arts and Crafts Exhibition Society in 1899, this was one of Heal's first attempts at elaborate exhibition quality furniture.

See Oliver S Heal, 'Sir Ambrose Heal and the Heal Cabinet Factory, 1897-1939', 2014.



50





51

**Lot 51**

An Arts and Crafts oak hanging coat rack, with ten pegged hooks, 100cm wide 52cm high £100 - 150

**Lot 52**

An Arts and Crafts brass wall mirror, with a wide embossed scrolling frame, inset with a bevelled edge, 44cm wide 60.5cm high £200 - 300



52

**Lot 53**

An oak book rack, with featherbanded details, pierced handles and slatted sides on sledge feet, 51cm wide 25.5cm deep 75.5cm high £150 - 250

**Lot 54**

An Arts and Crafts lead fountain head, early 20th century, in the manner of Louis Weingartner for the Bromsgrove Guild, in the form of a young boy with his arms outstretched holding a frog, on a rectangular base, *recently restored by the Bulbeck Foundry*, 66cm wide 93cm high £1,500 - 2,000

Provenance: Mallams, 12 December 2012, Lot 251; originally removed from the garden at New Dovers Court, Chipping Campden, home of Frederick Landseer Griggs.



54



53





55

**Lot 55**

A stained glass panel, in the style of Sir Edward Burne-Jones, modelled as a window, 55cm wide 183cm high, now in an hardwood frame door, 69cm wide x 195cm high  
£400 - 600

**Lot 56**

A steel fender, c.1860, the brass finials cast with arabesque designs and mounted with tile panels, 115cm wide 45cm deep  
£200 - 400

**Lot 57**

An Arts and Crafts copper fire surround, the inverted insert with an hinged shaped hood, with lion mask implement holders and brass rivets, 106.5cm wide 102cm high 42 x 58cm aperture  
£400 - 600



58

**Lot 58**

A pair of Arts and Crafts iron and brass Sussex-style andirons, early 20th century, each with double pierced brass roundels on acorn cast supports, 82cm high, together with a matching fire basket (2)  
£600 - 800

For similar tall Elizabethan examples of pierced andirons, but with 'Sussex enamelling', see Guy Cadogan Rothery, 'English Chimneypieces', and for a very similar pair, un-enamelled, Westland London's current website.



56



57

**Lot 59**

A Secessionist circular oak inlaid table, centred with a rosewood mother-of-pearl plaque, over turned ebonised legs, with brass caps with a double 'X' stretcher, 74.5cm diameter 69cm high, and a set of matching chairs, with burgundy leatherette seats and back (5)  
£300 - 500



59





60

**Lot 60**

A gilt bronze easel photograph frame, c.1910-15, signed 'C Villain', cast in low relief with an angel to one side, the top depicting a dreadnought bombarding the shore, an airship in the sky, the lower with a vacant cartouche with a sword and guns behind, easel backed, 20cm wide, 26.5cm high, 9.5 x 13.5cm aperture, £150 - 200



62

**Lot 62**

An Aesthetic oak side table, with a chamfered top over two drawers and tapered legs, 91.5cm wide, 52cm deep, 75cm high, £100 - 150



63

**Lot 63**

A 'Saville' mahogany armchair, designed by George Jack for Morris & Co., 66cm wide, £300-500



64

**Lot 64**

A Secessionist nursery print, of Berta Zuckermann aged 14, inscribed in the print 'Secession Graphische Kunstanstalt GmbH Wien VIII', 49 x 46cm, £120 - 150

**Lot 65**

A set of eight James Shoolbred oak Arts and Crafts dining chairs, comprising: two elbow chairs and six single chairs, the shaped top rail off a splat back, the central splat carved with a stylised flower, with drop-in seats, on square tapering legs, labelled (8), £300 - 500

**Lot 61**

An Aesthetic brass standard lamp, late 19th century, with pierced scrolling decoration, on a circular base and scrolling acanthus carved bracket feet, 135cm high, £150 - 250



61



65





66

**Lot 66**

A pair of mahogany stands, each of triangular form with carved details and ionic columns, each side mounted with a painted panel depicting an angel, 45cm diameter 54cm high, together with a pair of 'Gothic' candle stands, 61cm high (4) £200 - 400

**Lot 67**

An oak wall clock, with pierced scrollwork, the painted dial with a single fusee movement, 47.5cm wide 68cm high £200 - 300

**Lot 68**

A brass and copper oil lamp base, raised on a tripod stand, *lacking the mounts, resoldered*, 32.5cm high £200 - 300



67

**Lot 69**

An Arts and Crafts copper and brass wall light, the mount stamped 'B G H' for Birmingham Guild of Handicraft, 21cm wide £200 - 300

**Lot 70**

A mahogany and boxwood inlaid mantel clock, with an enamelled Arabic dial, above an inlaid galleon, 22cm wide 28cm high £200 - 300

**Lot 71**

An Arts and Crafts copper and brass adjustable standard lamp, late 19th century, with a square section strapwork base and applied copper flowers, 148cm high £150 - 250



68



69



70



71





72



73

**Lot 72**

A pair of copper sporting pin trays, each depicting a man playing bowls or playing golf, with registration numbers, 10cm diameter, and an oak-mounted copper ashtray, 15cm diameter (3)  
£100 - 150

**Lot 73**

An Arts and Crafts copper tray, of rectangular form embossed with pomegranates and leaves, 65cm wide, 42.5cm deep  
£100 - 150

**Lot 74**

A brass and copper kettle, with a high angular handle and spout, stamped mark, 16cm high, and another kettle, of squat form, 14cm high (2)  
£150 - 200

**Lot 75**

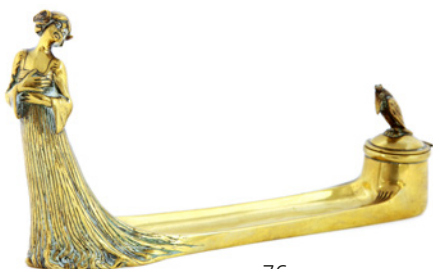
A Secessionist copper and brass desk set, each piece mounted with owl and pine cone details, comprising: an inkstand, 24cm wide, a blotter, 15cm wide, and a letter rack, 15cm wide (3)  
£300 - 500



74



75



76



77

**Lot 76**

An Art Nouveau brass inkstand, modelled as a lady in a Fortuny dress, a pen tray dividing the inkwell, the hinged top mounted with a crowned stork, with faint 'RC?' to the underside, 32.5cm wide, 16.5cm high  
£200 - 300

**Lot 77**

A Secessionist brass and copper hotplate, the sides cast with signs of the zodiac, the copper top perforated, 29cm wide  
£150 - 250

**Lot 78**

A Secessionist oval brass trivet, 26cm wide, 9.5cm high, and another chrome stand, stamped 'AD' 9cm to 49cm wide, 27cm deep (2)  
£120 - 150

**Lot 79**

An Arts and Crafts copper and iron fireguard, early 20th century, in the manner of John Pearson, decorated with a boat in full sail, 54cm wide, 83cm high  
£200 - 400



78



79



80

**Lot 80**

A pair of Donegal runners, early 20th century, each with floral motifs on a red field, 360 x 109cm (2)  
£400 - 600



**Lot 81**

An ebonised 500/6 desk,  
 designed by Josef Hoffmann in 1905 and manufactured by Jacob and  
 Josef Kohn, Vienna, the raised back with a three-quarter gallery and two  
 drawers each side, over a writing surface and a central drawer,  
 109cm wide  
 58.5cm deep  
 96.5cm high  
**£5,000 - 7,000**

For similar examples, see: Giovanni Renzi, 'Il Mobile Moderno: Gebrüder  
 Thonet Vienna, Jacob & Josef Kohn', 2008 pp.202-203 and Eva Otllinger  
 'Against the Grain: Bentwood furniture from the collection of Fern and  
 Manfred Steinfeld', 1993, p.85.





82



84

**Lot 82**

An Arts and Crafts oak panelled settle,  
132cm wide  
52cm deep  
155cm high  
£500 - 800

Formerly the property of Hugh Scully and Stanhope Forbes. Stanhope Forbes is seen sitting on the settle in a photograph in the Strand Magazine, November 1901.

**Lot 83**

A mahogany and boxwood inlaid settee,  
138cm wide  
88cm deep  
62cm high  
£100 - 200



83

**Lot 84**

A mahogany corner table,  
in the manner of Shapland & Petter,  
with a single drawer over a double  
slatted frame,  
86cm wide  
50cm deep  
91cm high  
£150 - 200

**Lot 86**

A lead figure of a putto,  
20th century, in the manner of the  
Bromsgrove Guild, holding a heart  
aloft in one hand and a bow in the  
other, *restored*,  
78cm high  
£300 - 500

**Lot 85**

An Arts & Crafts oak armchair,  
68.5cm wide  
60cm deep  
96cm high  
seat 45.5cm  
£200 - 300

**Lot 87**

An oak occasional table,  
the square top with a chamfered  
edge, over a quatrefoil pierced  
frieze, raised on octagonal legs on  
brass castors  
£250 - 350



85



86



87





88

**Lot 88**

A suite of three gilt and patinated wrought iron table lamps, American, c.1900, each naturalistically modelled with acorns and leaves, with tree branches mounted with screws, possibly for Tiffany favrile shades, 68cm high (3)  
£2,000 - 3,000

**Lot 89**

A pair of Scottish ebonised side chairs, each with a tapering back with a circular detail, over a rush drop-in seat, *worn*, with stretchers, 107cm high  
seat 46cm high (2)  
£150 - 200



89

**Lot 90**

A pair of Scottish mahogany side chairs, each with a tapering back and pierced details, over a wedge-shaped drop-in seat, *reupholstered*, with turned front legs, *labelled* 'The pair of chairs were purchased at Lyon & Turnbull Saleroom George Street, Edinburgh, 1920', 114cm high  
seat 52.5cm high (2)  
£150 - 200



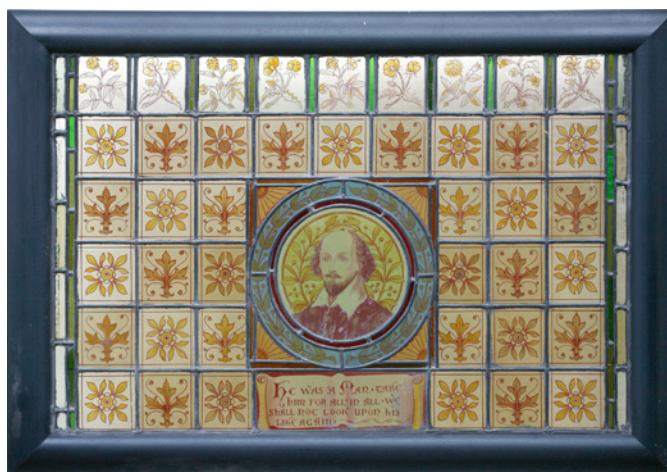
90



91



93



94



92

**Lot 91**

An embroidered 'Rose Bush' fire screen, after a design by May Morris (1862-1938), mounted in a painted frame, panel 54 x 55cm  
64cm wide  
78cm high  
£150 - 250

Embroidery kits that were designed by May Morris were sold in Morris and Co.'s store. For a similar design, see 'May Morris, Arts and Crafts Designer', Thames and Hudson, 2017, p.89, nos. 72 and 73.

**Lot 92**

After Henry Jacobs (1864-1935)  
a bronze bust of a girl, signed 'H Jacobs', on a marble plinth, 18cm high  
£100 - 150

**Lot 93**

A large amber glass stem vase, the flared top on an elongated stem descending on an outswept base, 122cm high  
£100 - 150

**Lot 94**

An Arts and Crafts stained glass panel, centred with a portrait of William Shakespeare, above a scroll inscribed 'He was a man, take him for all, we shall not look upon his life again', 101cm wide  
70.5cm high, in a modern frame  
£400 - 600



95



96

**Lot 95**

An Art Nouveau tinplate cigarette dispenser, mounted with a stork automata, the front panel mounted with a lozenge-shaped print, 26cm high  
£200 - 300

**Lot 96**

A pair of Art Nouveau spelter urns, cast with masks, flowers and naturalistic handles and marble plinths, 26.7cm high (2)  
£80 - 120





97

**Lot 97**

A WMF silver-plated oval dish, cast with ladies kissing, numbered '196' and stamped mark, 28cm wide 17cm high £80 - 120



98

**Lot 100**

A Kralik cranberry and brass-mounted inkwell, the stand modelled as a leaf, cast mark 'DGMA. KKDEST PATA', 17cm wide £100 - 150

**Lot 98**

An Arts and Crafts copper wall mirror, in the Liberty style, with pierced brass roundels and a bevelled glass plate, 55 x 75cm £200 - 300

**Lot 99**

After Julien Causse (French 1869-1914), an Art Nouveau bronze figure on a rouge marble plinth, 55cm high £400 - 600

**Lot 101**

An Osiris pewter and gilt-mounted claret jug, with a purple glass body, impressed mark 'Oriris 5oz', 30.5cm high £200 - 300



99



100



101



102



103



104

**Lot 102**

A silver twin-handled porringer, Liberty & Co., Birmingham, 1910, with flower details, 16cm wide, and a matched spoon, Birmingham, 1910, with enamelled details, 14cm long (2)  
£180 - 220

**Lot 103**

A Liberty & Co. Tudric desk clock, designed by Archibald Knox, model 0482, with a pewter square section case with enamelled hearts, impressed marks, 10.5cm high  
£150 - 250

**Lot 104**

A silver and enamelled buckle, by Liberty & Co., Birmingham, 1908, 12cm wide 4.7cm high  
£200 - 300

**Lot 105**

A silver embossed 'Peacock' photograph frame, Charles Henry Freeman, Birmingham 1918, with an easel back, stamped 'Rd No.413302', 19cm wide 23.5cm high 12 x 8.5cm aperture  
£400 - 600

**Lot 106**

A silver cigarette box, A E Jones, Birmingham, 1928, with a dome lid, centred with a flower head, wood-lined interior, on squat ball feet, 11cm wide 9.5cm deep 6.5cm high  
£200 - 300

**Lot 107**

A miniature silver rose bowl, by Liberty & Co., Birmingham, 1904, with three turquoise cabochons, with a wire mount, 7.5cm diameter  
£150 - 180



105



106



107





108



109

**Lot 108**

An Iona silver paperknife,  
by Alexander Ritchie, Glasgow, 1927,  
modelled as a Celtic sword,  
21cm long  
£200 - 300

**Lot 109**

A silver seal top spoon,  
by the Guild of Handicraft, London, 1956,  
14cm long  
£100 - 150



110

**Lot 110**

An unusual Hukin and Heath silver-plated  
and glass combination watch stand and  
posy holder,  
stamped '21217',  
26cm wide  
20cm high  
£150 - 180



111

**Lot 111**

A silver-plated meat cover,  
designed by C R Ashbee,  
34.5cm wide  
26cm deep  
21cm high  
£200 - 300



112

**Lot 112**

A WAS Benson brass and  
copper cantilever piano  
candlestick,  
stamped 'W A S Benson',  
33.5cm long  
10.5cm high  
£300 - 500

**Lot 113**

A Tudric pewter basket,  
with a hammered finish,  
stamped '01572 Tudric pewter',  
23cm wide  
£80 - 120



113

**Lot 114**

An Arts and Crafts metal  
mirror,  
probably Scottish, with rose  
details to the corners,  
37.5cm wide  
49cm high  
£150 - 180



114

**Lot 115**

A Martin Brothers' stoneware vase, moulded with stylised flower heads within incised leaf-shaped panels, *incised mark 'Martin... London & Southall 1-1902'*, 7.2cm high  
£200 - 300



115

**Lot 116**

A Martin Brothers' stoneware vase, dated 1894, of slender baluster form decorated with anthropomorphic fish, eels, a jellyfish and seaweed, *incised 'Martin Bros. London and Southall, 8-1894'*, restored, 21cm high  
£300 - 500



116

**Lot 117**

An R W Martin Brothers' stoneware trefoil-shaped inkstand, with three apertures, *lacking inkwells, incised 'R W Martin London and Southall'*, 16cm wide 17cm deep  
£150 - 200



117

**Lot 118**

A William Moorcroft 'Claremont' twin-handled vase, signed in green *'W Moorcroft Des printed Rd.no.420081 Made for Spaulding & Co'*, 19cm high  
£800 - 1,200



118

**Lot 119**

A Macintyre pottery 'Poppy' dish, designed by William Moorcroft, decorated in blue and green, with twin handles and raised on bracket feet, *printed mark and inscribed in green 'W. Moorcroft'*, 32.5cm wide  
£250 - 350



119

**Lot 120**

A Ruskin high-fired flambé vase and cover, 1906, in purple and white with turquoise specks, with domed cover and finial, *impressed marks and dated 1906*, 35.5cm high  
£2,000 - 3,000



120

**Lot 121**

An Art Pottery jug, decorated by John Pearson in the Persian style, in green and blue with silver lustre, *printed monogram and 'X'*, 13.5cm high  
£150 - 180



121





122

**Lot 122**

A William de Morgan two-tile snake and flower panel,  
Merton Abbey Period (1882-1888), *impressed mark*,  
20.8cm (8.25in square)  
£1,500 - 2,000

For a similar design in a different colourway, see Victoria and Albert Museum E597-1917 and illustrated in Jon Catleugh's 'William de Morgan Tiles', no.37a, 'Boa Constrictor', no. 242, p.153.

**Lot 123**

A collection of William de Morgan tiles, Merton Abbey period (1882-1888), comprising:  
an incomplete tile panel,  
seven tiles with parts of an eagle,  
15.2cm (6in),  
six tiles in parts of foliage,  
15.2cm (6in),  
five frieze tiles,  
one part tile,  
15.5 x 5.2cm,  
forty green frieze tiles,  
15.5 x 5.2cm (60)  
£1,000 - 1,500



123

**Lot 124**

A Loetz glass bowl,  
the shaped rim with a plain iridescent centre,  
16.5cm diameter  
£300 - 500



124





125



126



**Lot 125**

An Art Nouveau green glass iridescent bowl, with a dimpled body with applied prunts, 26.5cm diameter, and a vase, 18.5cm high (2)  
£150 - 250

**Lot 126**

A pair of Émile Gallé green glass beakers, with spiral fluting and with gilt decoration, signed, 10.5cm high (2)  
£100 - 150



127



128



129



130

**Lot 127**

A pair of Royal Bonn twin-handled pottery vases, each painted with a maiden amongst flowers and a landscape, printed and impressed marks, one handle reset, 40cm high (2)  
£300 - 500

**Lot 128**

A Goldscheider terracotta vase, moulded with a maiden plunging through the sky to the body, two figures clinging to the shaped rim, stamped marks, 0671/131/69, 34.5cm high  
£200 - 300

**Lot 129**

An Art Nouveau enameled hair comb, by Piel Frères, modelled with a scarab beetle and cranes, with a horn hinged comb, 13.7cm wide 10.5cm high  
£300 - 500

**Lot 130**

A Gabriel Argy-Rousseau pâte de verre glass Hibiscus pendant, in purple and green, of oval form, signed 'G.A.R.' in the mould, with a green silk necklace and tassel, 4.8cm wide 6.5cm high  
£400 - 600

**Lot 131**

A Daum landscape cameo glass vase, of footed sleeve form, acid etched with trees in relief, engraved and partial gilt signature to base, 16.2cm high  
£500 - 800

**Lot 132**

A Schneider cameo glass vase, with mottled amber ground, cut with stylised flowers, in orange and blue, 20.5cm high  
£200 - 300



131



132



**Lot 133**

A spelter vase,  
by L & F Moreau, modelled with a nude on  
the shoulder of the vase, *signed 'L. Moreau'*,  
46.5cm high  
£250 - 350



133

**Lot 134**

A Moorcroft 'Hazeldene' vase,  
designed by William Moorcroft for  
Liberty & Co., of shouldered form with everted  
rim, on a blue, olive and yellow ground,  
*stamped '2', green 'M Moorcroft' and printed  
'Made For Liberty & Co. Rd No 397964'*,  
15.5cm high  
£1,200 - 1,500



134

**Lot 135**

A Doulton Lambeth stoneware  
chamberstick,  
by Kate Giblin, tube-lined with fish beneath  
sinuous waves, the domed plinth with a handle  
above a drip pan, *stamped marks, incised 'G'  
and numbered '4512'*,  
16.5cm high  
£100 - 150



135

**Lot 136**

A pair of Doulton Lambeth stoneware  
vases,  
by Frank Butler, tube-lined and incised in  
green, brown and buff glazes, *stamped marks  
and incised artist monogram*,  
29.5cm high (2)  
£200 - 300



136

**Lot 137**

A Doulton Lambeth stoneware soap dish,  
designed by Harry Simeon, the octagonal  
dish mounted with a pelican, *stamped marks  
'X8978'*,  
14cm high  
£150 - 250



137

**Lot 138**

A Tudric pewter tumbler holder,  
with pierced sides, *with damage, stamped  
and numbered '0534'*,  
7.8cm high, and  
a pewter twin-handled cauldron,  
with enamelled 'cloud' prints to the sides,  
*stamped and numbered '0303/6'*,  
7cm high (2)  
£80 - 120



138

**Lot 139**

A Della Robbia vase,  
of tapering form with applied lizard, with  
lustre finish, *incised with galleon mark*,  
13.5cm high  
£150 - 250



139



140



140 open

**Lot 140**

A Robert 'Mouseman' Thompson oak wardrobe, c.1930, with the dot and halfpenny carved frieze over an adzed and panelled case, a pair of cupboards opening to reveal a hanging space, three shelves and three graduated drawers with iron latch and batwing hinges, low relief carved signature, 122cm wide  
59cm deep  
167cm high  
£4,000 - 6,000

**Lot 142**

A set of six Robert 'Mouseman' Thompson chapel chairs, each with leather seats, copper studs to the edges, *each signed with the mouse signature to the inside of the leg in low relief*, 46cm wide  
86cm high  
seat 43cm high (6)  
£400 - 600



141

**Lot 141**

A Robert 'Mouseman' Thompson oak stool, with a latticework leather seat, *the carved mouse signature to the leg*, 34cm wide  
27cm deep  
35cm high  
£400 - 600



142





143

**Lot 143**

Two matched Robert 'Mouseman' Thompson oak chests of drawers, each with two short and three long drawers, each with the mouse signature to the edges  
 91.5cm wide  
 49cm deep  
 93cm high (2)  
 £2,000 - 4,000

One chest was produced later to match the first.



144

**Lot 144**

A Robert 'Mouseman' Thompson oak settle, the adzed frame with a penny moulded top over panels, a solid seat with scrolled arms, signed with the mouse signature on the left column,  
 183cm wide  
 66cm deep  
 90cm high  
 £2,000 - 3,000

By repute believed to have been made for Ampleforth College.



145



146

**Lot 145**

A pair of Robert 'Mouseman' Thompson oak napkin rings, each of octagonal form, carved with the mouse signature, 4.7cm high (2)  
£80 - 120

**Lot 146**

A pair of Robert 'Mouseman' Thompson oak headboards, each with an arched and lattice panel, each signed with a mouse signature to the sides, 91cm wide 58cm high 95cm high overall (2)  
£300 - 500



147

**Lot 147**

A Robert 'Mouseman' Thompson oak dining table, with a rectangular adzed top, raised on two octagonal columns on a sledge base, mouse signature to one column, 152.5cm wide 87cm deep 73cm high, and six chairs, each with a latticed back and tan leather seats (7)  
£2,500 - 3,500

**Lot 148**

A Robert 'Mouseman' Thompson 6ft sideboard, with an adzed top with canted corners, three central drawers flanked by cupboards with wrought iron handles and hinges, mouse signature to the left side, 184cm wide 47cm deep 82cm high  
£3,000 - 5,000



148



**Lot 149****A walnut pedestal desk,**

by Edward Barnsley (1900-1987), 1937, for Captain J R Abbey (1894-1969),  
the red leather top over three frieze drawers and two cupboards with  
fielded panels,

140cm wide

71cm deep

81cm high

**£3,000 - 5,000**

J R Abbey fought in the First and Second World Wars. He later became manager of Kemp Town Brewery and saw the merger with Charringtons in 1954. He was a bibliophile and had complete collections from the Kelmscott, Ashendene and Gwasg Gregynog presses.

**Lot 150****An oak gentleman's dressing table,**

c.1930, by Peter Waals (1870-1937), the shaped rectangular top centred with a single drawer and cupboard with a tiered panel, flanked by eight further drawers, wrought scrolled handles with chased details,

122cm wide

56cm deep

97cm high

**£3,000 - 5,000**

Literature: 'The Furniture and Joinery of Peter Waals', the Alcuin Press, 1930, plate 9 with a similar piece illustrated and described as 'a man's dressing table in oak'.

Peter van der Waals was born in Holland in 1870 and worked as a foreman for Ernest Gimson at his workshop in Daneway House near Sapperton, Gloucestershire, England. The workshops had been started by Gimson and Sidney & Ernest Barnsley to produce furniture in the tradition of the Arts and Crafts Movement. This cabinet was inspired by British furniture of the 17th century and demonstrates the continuing strength of the Arts and Crafts tradition in Britain even after World War I. After Gimson's death in 1919, van der Waals started his own workshop in Chalford, Gloucestershire, producing domestic furniture.





151

**Lot 151**

An inlaid mahogany chest of drawers, by Edward Barnsley (1900-1987) with a bow front and five graduated drawers, stamped 'Barnsley', 104cm wide  
50.5cm deep  
91.2cm high  
**£2,000 - 3,000**

Provenance:  
Collection of W G Jenkins, founder and chairman of the Edward Barnsley Trust.

Edward Barnsley (1900-1987) was the son of Sidney Barnsley and nephew of Ernest Barnsley, who were both leading figures in the British Arts and Crafts Movement. He set up the Edward Barnsley Workshop which continues the tradition to this day.

**Lot 152**

A circular inlaid yew table, by Edward Barnsley (1900-1987), raised on a shaped cruciform stand, stamped 'Barnsley', 62cm diameter  
46cm high  
**£500 - 700**

Provenance: Collection of W G Jenkins, founder and chairman of the Edward Barnsley Trust, bought in 1971.



152

**Lot 153**

An ash ladder-back rocking chair, by Neville Neal, after a design by Ernest Gimson, with a rush seat, stamped to upright  
**£250 - 350**



153

**Lot 154**

A walnut chest of drawers,  
designed in 1982 by Edward Barnsley (1900-1987),  
of serpentine form with boxwood stringing with  
two short and three long graduated drawers,  
*inscribed and signed by Edward Barnsley under  
one drawer 'This chest of drawers was designed by  
Edward Barnsley 1982 for Christopher H C Edwards  
and made by the Froxfield Workshop by Oskar  
Dawson / Edward Barnsley 1983'*,  
85cm wide  
53cm deep  
92cm high  
£5,000 - 8,000



154



155

**Lot 155**

A walnut sideboard,  
by Edward Barnsley, of bow form with boxwood  
stringing, over three drawers, two fitted for cutlery,  
with moulded supports united with a curved  
stretcher, *stamped 'Barnsley' to one drawer*,  
168cm wide  
50.5cm deep  
90cm high  
£1,500 - 2,500

**Lot 156**

An oak serpentine-fronted side table,  
by Edward Barnsley, with four drawers, bog oak  
handles, chamfered supports, united with a curved  
stretcher, *one drawer stamped 'Barnsley'*,  
133cm wide  
53.5cm deep  
75cm high  
£1,000 - 1,500



156





157

**Lot 157**

An inlaid Australian Black Bean cabinet,  
by Edward Barnsley (1900-1987) with a bow front with two  
drawers, each fitted with divisions and two further slides,  
over two sliding tambour shutters, *stamped 'Barnsley'*,

122cm wide

55cm deep

84.5cm high

£1,000 - 1,500

Provenance: Collection of W G Jenkins, founder and  
chairman of the Edward Barnsley Trust.

**Lot 158**

An ash spindle-back rocking chair,  
by Neville Neal, after a design by Ernest Gimson,  
with a rush seat, *stamped to upright*  
£250 - 350

**Lots 159-162**

Spare lots



158

# ART DECO FURNITURE, OBJECTS AND LIGHTING

163-329



163



164



164 label

## Lot 163

An Heal's walnut and crossbanded bookcase cabinet, the upper section with glazed panelled doors opening to reveal shelves over cupboards raised on outswept feet, 107cm wide  
38cm deep  
182cm high  
£400-600

## Lot 164

A mahogany cocktail cabinet, designed by Betty Joel in 1936, the crossbanded cabinet enclosing a birchwood(?) interior with a single shelf, over three drawers with chrome handles, labelled 'Token Hand-made furniture designed by Betty Joel / manufactured by H Green / at Token Works / Kingston-By-Pass / 15 March 1936', 85cm wide  
43cm deep  
146.5cm high  
£500 - 800

## Lot 165

An Art Deco glass plafonnier, moulded with swags and scrolls, mounted with a silvered ring, with laurel rings, 32cm diameter overall  
£100 - 200

## Lot 166

An Art Deco centrepiece modelled as a pair of pheasants, signed 'I Gallo', on a stepped marble plinth, 91.5cm wide  
£400 - 600

## Lot 167

A pair of Art Deco marble bookends, with gilt metal mounts cast with honeybees, 25cm high (2)  
£250 - 350



165



167



166





168

**Lot 168**

A pair of Art Deco walnut bedside cabinets, each with a drawer and cupboard enclosing a shelf, 36.5cm wide 36.5cm deep 66cm high (2) £200 - 300

**Lot 169**

A set of six walnut dining chairs, each with a reupholstered back and seat, shaped arms with scroll details to the frames, 58cm wide 90cm high 90cm high seat 44cm high (6) £300 - 500

**Lot 170**

An Art Deco walnut cabinet, of slender form with fluted details to the cupboards, opening to a maple-lined interior, a mirror backing over a slide with a cupboard below with a shelf, raised on a step plinth, 74.5cm wide 42cm deep 169cm high £300 - 500



170



169



**Lot 171**

A pair of Clarice Cliff 'Football' meiping vases,  
each with geometric painted decoration in yellow, orange, green, purple and blue, *printed marks, both restored*,  
36cm high (2)  
**£2,000 - 3,000**

Provenance: The vendor's grandmother recalls that these were purchased, direct from the factory, on the family's return journey from their summer holiday to Cornwall in around 1930. Subsequently passed down through the family.





172

**Lot 172**

An Art Deco Bakelite and spelter figural stand, the rectangular top inlaid with chequered panels, raised on a column modelled as two ladies holding a garland, 35cm wide, 25cm deep, 69cm high, £350 - 450



173

**Lot 173**

An Art Deco satinwood and ebonised folding table, with an hinged circular top, 91.5cm wide, 92cm open, 71.5cm high, £300 - 500

**Lot 174**

An Art Deco burr maple pot cupboard, of cylindrical form, opening to reveal a shelf, with a Bakelite and chrome handle, 45cm diameter, 69cm high, £200 - 400

**Lot 175**

An Art Deco marble and chrome mantel clock garniture, the chrome and brass mounted columns flanking an octagonal dial with brass Arabic numerals, 40.5cm wide, 12cm deep, 34cm high, the garnitures mounted with lights, each with frosted stands, 32cm high (3), £300 - 500

**Lot 176**

A gilt bronze and ivory-mounted 'nut' bowl, modelled as a ship's wheel, raised on a turned afrormosia stand, 23.5cm diameter, £80 - 120

**Lot 177**

An Art Deco plaster figure, modelled as a reclining nude, 31cm high, and a mask of a lady, 24cm (2), £80 - 120

**Lot 178**

An Art Deco patinated spelter centrepiece, by A Godard, modelled as a girl and a borzoi on an onyx plinth, 59cm wide, £150 - 200



175



176



177



178



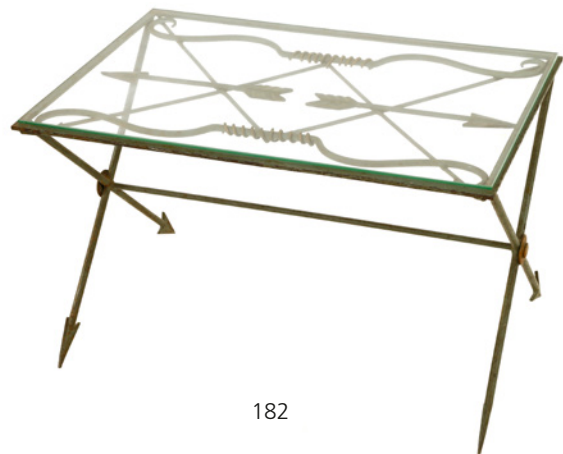
179



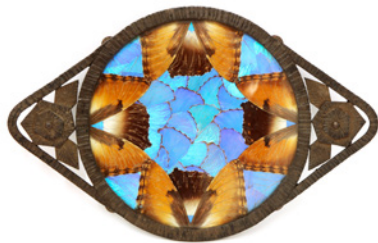
180



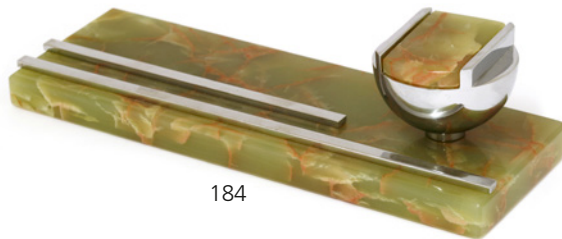
181



182



183



184

**Lot 179**

An Art Deco-style burr elm room divider or open wall shelves, with twelve divisions, raised on balls and a platform plinth, 121cm wide 30cm deep 183cm high £1,000 - 1,500

**Lot 181**

An Art Deco walnut and coromandel inlaid mantel clock, with a chrome chapter ring and Westminster movement, 33cm wide 17cm deep 23.5cm high £120 - 150

**Lot 183**

A French Papillons de Peguy wrought iron tray, the tray arranged with butterfly wings, with twin handles, stamped 'Les Papillons de Peguy Paris', 41cm wide 26.5cm deep £200 - 300

**Lot 180**

An Art Deco silver and mahogany table lamp, with a moulded shade, 50cm high £100 - 150

**Lot 182**

A French Art Deco painted iron table, with a glass top, the stand modelled as bows and arrows, 70cm wide 45.5cm deep 43.5cm high £100 - 150

**Lot 184**

An Art Deco onyx and chrome-mounted desk stand, 28cm wide 9.5cm deep 7cm high £150 - 250

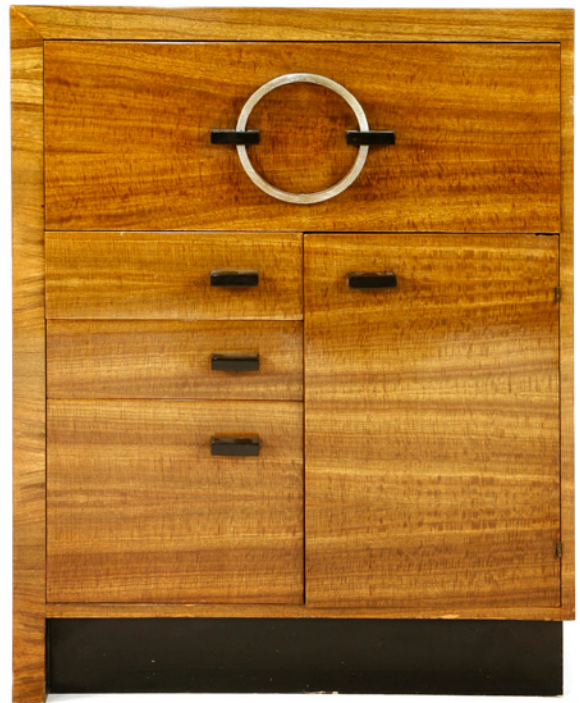




185

**Lot 185**

A Danish green upholstered armchair,  
with a button back  
£100 - 150



186

**Lot 186**

An Art Deco secretaire,  
with an hinged fall front, with a pull-out writing surface, over three  
drawers and a cupboard,  
81.5cm wide  
38.5cm deep  
104cm high  
£300 - 500

**Lot 187**

A French Art Deco coromandel and ivory sideboard,  
the plain top with ivory stringing, centred with four drawers and  
flanked with cupboards,  
190cm wide  
50.5cm deep  
90.5cm high  
£6,000 - 8,000



187



188

**Lot 188**

A French Art Deco rosewood dining table, the shaped rectangular top over two columns, with pull-out ends, 182cm wide, 98cm deep, 74cm high, and a set of six chairs (7)  
£400 - 600



189

**Lot 189**

A cherry walnut and Portoro marble top dressing table, by Maurice Dufrène (1876-1955), of kidney shape with two frieze drawers and three further drawers on the pedestals, with metal details and ivory handles, 131.5cm wide, 47cm deep, 68.5cm high  
£3,000 - 5,000

Maurice Dufrène (1876-1955) was a French designer who headed the Maîtrise workshop of the Galeries Lafayette. An exponent of the Art Nouveau and latterly the Art Deco style, he designed the exhibit for the 1925 Exposition Internationale des Arts Décoratifs et Industriels Modernes in Paris. He designed for Christofle and also taught at the École des Arts Appliqués.



190

**Lot 190**

A large cherry and burr walnut mirror, by Maurice Dufrène (1876-1955), the octagonal frame with metal details, 157cm wide  
£2,000 - 3,000



**Lot 191**

An Art Deco mahogany side table,  
with a plain top and two dead drawers over  
a shelf,  
84cm wide  
38cm deep  
52cm high  
£200 - 300



191

**Lot 192**

An Art Deco walnut bureau bookcase,  
the hinged writing surface flanked to one side  
and below with shelves,  
89cm wide  
31cm deep  
115cm high  
£150 - 200



192

**Lot 193**

An Art Deco specimen marble side table,  
the rectangular top with canted corners,  
raised on a double tapering column, on  
a conforming plinth,  
60cm wide  
45cm deep  
60.5cm high  
£400 - 600



193



194

**Lot 194**

An Art Deco bird's-eye maple nest of tables, a shaped circular top with four quarter tables, raised on shaped supports, each with an undertier, raised on a plain plinth, 76cm diameter  
56.5cm high  
£500 - 700

**Lot 195**

An Art Deco burr walnut cloud suite, comprising:  
a three-seater settee, with cream leather upholstery, 169cm wide  
back 85cm high  
seat 49cm high, and  
a pair of armchairs, raised on ebonised blocks, 75cm wide  
seat 49cm high (3)  
£2,500 - 3,500



195



196

**Lot 196**

An Art Deco walnut chest of five drawers, with vertical amber Bakelite handles, raised on stepped block feet, 67cm wide  
46cm deep  
100.5cm high  
£250 - 350

**Lot 197**

An Art Deco marble and onyx three-piece clock garniture, of Moorish design, the illuminated clock and ornaments mounted with a pair of turbaned spelter figures, the face above steps flanked with Arabic arches, the French drum movement striking on a bell, 62.5cm wide  
19cm deep  
33cm high,  
with a pair of domed ornaments, also with Arabic arches, 27cm high (5)  
£250 - 350



197



**Lot 198****\*Armand Vallée (1884-1960)****'JE VOUS DEMANDE DES RETOUCHES ET VOUS ME FAÎTES DES CHATOUILLES!'**

Signed and inscribed in pencil, pencil and watercolour

30.5 x 23.5cm

£150 - 200



198

**Lot 199****Two Art Deco spelter centrepieces,**

each mounted with Alsations, raised on marble plinths, 48 and 57cm wide (2)

£200 - 300



199



200

**Lot 200****An amber moulded glass table lamp,**  
moulded with feathers  
and chrome-mounted,  
58cm high

£150 - 200



202

**Lot 201****An Art Deco walnut five-drawer chest,**with cast handles,  
raised on stepped  
ziggurat supports,  
84cm wide  
47cm deep  
123cm high

£250 - 350



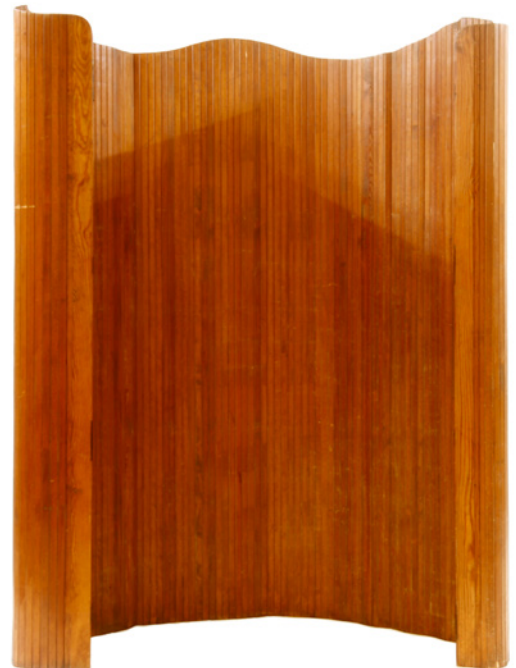
201

**Lot 202****A pair of patinated bronze and alabaster bookends,**  
each surmounted with a seated  
hippopotamus, the bases with double  
routed details,  
13cm wide  
7cm deep  
17cm high (2)

£200 - 300

**Lot 203****A Baumann pine tambour dressing screen,**  
with a shaped top edge, labelled  
'Baumann, Paravent Melun, Paris', with  
worm damage,  
230cm wide  
180cm high

£200 - 300



203



204

**Lot 204**  
An Art Deco walnut and mirrored top side table, with canted corners, on a square ebonised plinth, 59.5cm square 55cm high  
£120 - 150

**Lot 205**  
An Art Deco walnut side cabinet, with a shelf, a cupboard and two drawers, 66cm wide 36cm deep 76cm high  
£200 - 300



205



206

**Lot 206**  
An Art Deco walnut cabinet, with a cupboard and five drawers, 91cm wide 43cm deep 76cm high  
£250 - 300

**Lot 208**  
An Art Deco lamp base, mounted with two birds, with a frosted pink shade, on a marble plinth, 24cm high  
£100 - 150

**Lot 207**  
An Art Deco walnut arrow-shaped display cabinet, with ebonised details, glazed doors and two glass shelves, 91cm wide 30cm deep 122cm high  
£200 - 300



208



207



**Lot 209**

A pair of trumpet vases,  
 painted by Ditmar Urbach, brightly decorated  
 with flowers, *impressed and printed mark*  
*'Czechoslovakia, hand painted'*,  
 27.5cm high (2)  
 £100 - 150



209

**Lot 210**

A WMF dinanderie vase,  
 with geometric designs in copper and black,  
*stamped marks and numbered '93/524'*,  
 9.5cm high  
 £150 - 200



210

**Lot 211**

An Art Deco onyx and malachite cigarette  
 box,  
 with a silver hinge, Birmingham, 1939,  
*stamped 'Asprey'*,  
 17.5cm wide  
 10cm deep  
 5.5cm high  
 £200 - 300



211

**Lot 212**

A pair of Art Deco walnut three-drawer  
 chests,  
 with bow fronts and chrome handles,  
 31cm wide  
 44cm deep  
 72cm high (2)  
 £350 - 400



212





213

**Lot 213**

A collection of twenty-four Tiffany & Co. glass lenses, each numbered from an edition of one hundred, the lenses painted with trefoil design, with each edge cast 'Tiffany & Co New York Art Gallery 1939 Picasso number .../100', each 6.5cm diameter, in a leather album, embossed and with a stitched edge, the cover inset with a portrait profile, with inscription 'Picasso/Tiffany & Co. New York/Art Gallery/1939' £3,000 - 5,000

**Lot 214**

A marble and bronze desk bell, modelled as a sleeping dog on a carpet, with a sprung bell push, indistinctly signed 'P...cn...ecke', 10 x 7cm £150 - 250



214

**Lot 215**

An Art Deco pin dish, mounted with a figure of Josephine Baker on a marble plinth, with a dished section, 19cm high £100 - 150



215





216

**Lot 216**

A barside cocktail recipe menu, modelled as a cocktail shaker, with a flick menu of thirty-five recipes, stamped patent number '186582', 14cm high  
£100 - 150



217

**Lot 217**

An American 'Price-O-Mat' bartender's icemaker, 24cm high  
£80 - 120

**Lot 218**

An Art Deco burr walnut five-drawer chest, each drawer front hinged, raised on an ebonised plinth, 51cm wide 34cm deep 83cm high  
£150 - 250



218



219

**Lot 219**

A walnut and crossbanded humidor, with a single side drawer, fitted with gauze, 32.5cm wide 20cm deep 22cm high  
£100 - 150

**Lot 220**

An Art Deco walnut desk, the leather inset top with an arrangement of five drawers, the top drawer labelled 'Hamptons Pall Mall East London', 98.5cm wide 53.5cm deep 76.5cm high  
£1,000 - 1,500



220



221 dining suite



221 sideboard



221 drinks cabinet

#### Lot 221

A French Art Deco burr walnut and marble dining suite, comprising:

##### a dining table,

the marble top raised on a 'U' shaped stand, with ebonised and chrome details, extending wood ends,  
170cm long, 266cm extended

100cm deep

73cm high,

##### a sideboard,

the Portoro marble top over a raised central section with five drawers flanked with cupboards, 'D' shaped cupboards to the sides, raised on an ebonised and chrome plinth,

220cm wide

55cm deep

100cm high,

##### a drinks cabinet,

centred with a glazed cupboard enclosing two glass shelves, flanked with 'D' shaped cupboards and raised on an ebonised and chrome plinth,

110cm wide

41cm deep

110cm high, and

##### six chairs,

with shaped backs, cream leather seats and ebonised legs, and

a further four matched chairs (13)

£4,000 - 6,000



222

#### Lot 222

An Art Deco walnut and inlaid occasional table,

with four stepped and chamfered supports with an undertier,

60cm diameter

78cm high

£200 - 300





223

**Lot 223**

A Danish armchair,  
with striped upholstery,  
92cm wide  
66cm deep  
75cm high  
£100 - 200



224

**Lot 224**

A Danish banana settee,  
with striped upholstery,  
150cm wide  
80cm deep  
75cm high  
£200 - 300

**Lot 226**

A draughtsman's stool,  
designed by Charles E Miller for American Cabinet  
Co., painted green with applied springs,  
71cm high  
£250 - 300

**Lot 227**

An Art Deco walnut cabinet,  
with a base hinged compartment with three  
divisions, on ebonised sledge feet,  
38cm wide  
37cm deep  
54cm high  
£120 - 150



225

**Lot 225**

An Art Deco nest of three tables,  
with ebonised details,  
largest 59cm wide  
38cm deep  
47cm high  
£350 - 450

**Lot 228**

An Art Deco walnut console,  
of demilune shape with ebonised supports,  
76.5cm wide  
39.5cm deep  
70.5cm high  
£120 - 150



226



227



228



229



230



231



232



233

**Lot 229**

**A grey marble effect lucite handbag**, of rectangular form with a clear hinged lid, etched with a bow with swing handles, and **another yellow and white striped lucite handbag**, of rectangular form with a clear hinged lid etched with flowers, with a single hinge handle, an applied openwork white metal decoration to the exterior (2)

£150 - 200

**Lot 230**

**A red lucite handbag**, of oval form, with a two-row linear pattern to the hinged lid, a single hinged bangle, **together with a cream marble effect lucite handbag**, of rectangular form, with an applied circular lucite and gold-tone filigree flower head, clasp set with a simulated pearl to the centre, with single hinged handle (2)

£100 - 150

**Lot 231**

**An American Charles S Kahn silvered lucite handbag**, of oval form, with a clear chequered hinged lid, single transparent handle, with a silver-tone three-bead hinged clasp, *labelled 'Charles S Kahn Inc. Miami, Florida, USA'*, and **a brown marble effect lucite handbag**, of oval form, with single hinge handle, gold-tone hardware and clasp (2)

£100 - 150

**Lot 232**

**A Majestic lucite handbag**, of lozenge form, made from a transparent glitter effect lucite with gold-tone hardware, a transparent hinged lid and a single hinged handle, *with a fabric interior to the base marked 'Majestic'*, and **another Majestic lucite handbag**, of similar form, transparent lucite with gold-tone hardware (2)

£100 - 150

**Lot 233**

**A brown lucite handbag**, of oval form with a transparent hinged lid, decorated with a floral cutaway relief design, with double swing handles and a single brown lucite cabochon clasp, **together with a tortoiseshell-coloured lucite handbag**, of oval form with a clear hinged lid, decorated with an etched flower head, with scrolling clasp and double swing handles, and **a clutch form, maroon red lucite handbag**, by Ipès, made in Italy, with a fold-over lucite clasp with three-row gold-tone applied decoration, leather interior with slip pocket (3)

£180 - 200





234

235



236



237



238

**Lot 234**

A novelty chrome travelling cocktail set, comprising: a cocktail shaker, four beakers, a strainer, stamped 'DRGM' and variously numbered, in a leather sleeve, 11.5cm high  
£250 - 350

**Lot 235**

A pair of motoring posy holders, 1930s, reputedly from a Rolls Royce, with side brackets, stamped 'EPNS', 16cm high (4)  
£100 - 150

**Lot 236**

A copper motoring spirit burner, stand and burner, in a leather case, with a 'Piccadilly, London' gilt label, worn, and a pair of amber tinted military goggles (4)  
£120 - 150

**Lot 237**

A brass 'serpent' horn, with painted tongue, 28cm, and another horn, 34cm wide (2)  
£100 - 150

**Lot 238**

Six Triumph Motor Co. advertising print blocks, 1920s, including Triumph Super Seven, and an Austin Healey Sprite colour booklet (7)  
£100 - 150

**Lot 239**

A brass auxiliary fog lamp, on an hinged mount, 29cm high, a pair of Italian air horns, with case aluminium mounted 'IGM 3573-3576KA', possibly Ferrari, and a Bakelite electric horn (3)  
£100 - 150



239

**Lot 240**

A Smiths' dashboard timepiece, inscribed 'Cricklewood Works, London', mounted in a painted stand  
£60 - 100

**Lot 241**

A rare Alexandra spare bulb carrier, stamped 'Pro Pat Rd no. 690243', hinged and felt mounted, 13.5cm diameter, and twelve Lumax British automobile lamps, each boxed (13)  
£120 - 150



240



241



242



243



244



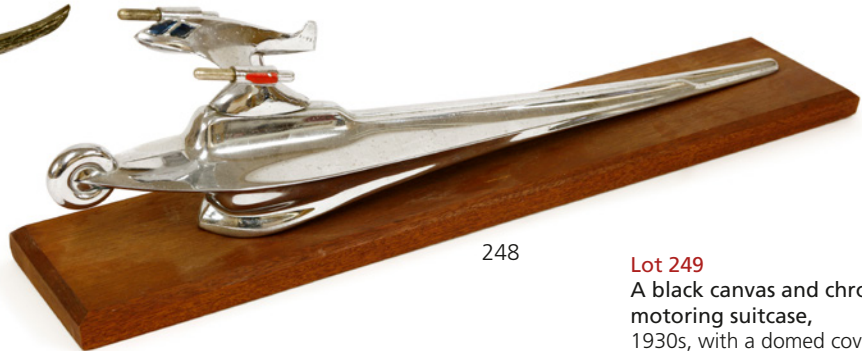
245



246



247



248

**Lot 242**

A car mascot, modelled as an elephant, on a turned wood plinth, 14cm high  
£80 - 120

**Lot 243**

A cast car mascot, modelled as a droopy-eared rabbit, on a turned wood plinth, 14cm high  
£80 - 120

**Lot 244**

A French cast car mascot, modelled as a child sculptor, on a turned hardwood plinth, 17.5cm high  
£200 - 300

**Lot 245**

An Asprey cast bronze car mascot, modelled as a begging Scottie dog, on a turned plinth, 17.5cm high  
£150 - 200

**Lot 246**

A cast bronze silvered car mascot, modelled as a retriever, cast mark 'Finnigans, London', on a turned wooden plinth, 15.5cm high  
£150 - 200

**Lot 247**

A bronze and silvered car mascot, modelled as a parrot, on a marble plinth, 22cm long  
£200 - 300

**Lot 248**

An American chrome hood mascot, possibly from a Chrysler, in the form of an airship, on a wooden plinth, 57cm long  
£250 - 350

**Lot 249**

A black canvas and chrome motoring suitcase, 1930s, with a domed cover, 80cm wide 46cm deep 27cm high  
£80 - 120

**Lot 250**

A pair of leather motoring suitcases, by 'S Reid, 90 Fleet Street, London', 82.5cm wide 54cm deep 14cm high, and 82.5cm wide 44cm deep 20.5cm high (2)  
£250 - 350



249



250





251



252



253



254



255



256

**Lot 251**

An Art Deco chest of six drawers,  
on an ebonised plinth,  
50.5cm wide  
45cm deep  
103cm high  
£180 - 220

**Lot 252**

An Art Deco walnut standard lamp,  
158.5cm high  
£120 - 150

**Lot 253**

An Art Deco bevelled glass mirror,  
of cloud form, with walnut detailing,  
76cm wide  
41cm high  
£80 - 120

**Lot 254**

An Art Deco walnut occasional table,  
the circular top over an undertier,  
60.5cm diameter  
52cm high  
£120 - 180

**Lot 255**

An Art Deco pollard oak dining table,  
with an extra leaf, united with a stretcher,  
136cm long  
182cm extended, and  
six dining chairs (7)  
£500 - 700

**Lot 256**

\*Attributed to John Robert Pinches  
(1884-1968)  
FIGURES ON A BEACH  
Unsigned, watercolour  
46.5 x 30cm  
£150 - 250



257 front

#### Lot 257

An 'Egyptomania' gilt metal-mounted hardwood chair, after an 18th Dynasty model found in the tomb of Tutankhamun, c.1925, bone-inlaid and parcel gilt, with a carved panel of the god Heh above a double-curved seat with uraei styles and intertwined plants between tapestry lion paw feet,

50cm wide

52cm deep

95cm high

£10,000 - 15,000

On 5 November 1922, Howard Carter, leader of the Lord Carnarvon's archaeological expedition, discovered the location of the tomb of the Egyptian pharaoh, Tutankhamun. Although some tomb robbing was evident, it remains the best preserved and most complete tomb in the Valley of the Kings.

News of Carter's discoveries - which consisted not only of the mummified pharaoh himself, but also a wealth of decorative objects and furniture that were kept with him for use in the afterlife - quickly spread, resulting in a resurgence in popularity for all things Egyptian.

Harry Burton, the only photographer granted access to the tomb and whose archive is held by the Griffith Institute at the Ashmolean Museum, Oxford, made it possible to circulate images of what they found. This is a copy of models the team discovered, which are illustrated and discussed in Hollis S Baker, 'Furniture in the Ancient World', London, 1966, pp.75-84.



257 back





258

**Lot 258**

An Art Deco Heal's walnut chest of drawers, with an arrangement of seven drawers with canted corners and chrome handles, *with an ivory label to one drawer*, 91cm wide 50cm deep 99.5cm high £1,000 - 1,500



261

**Lot 261**

An Art Deco wrought iron and Portoro marble console table, the demilune marble top over an openwork apron, raised on scrolling supports and on a stepped plinth, 104.5cm wide 97.5cm high £1,000 - 1,500

**Lot 259**

An oak wardrobe, in the manner of Heal's, with three short drawers over a long drawer, 110cm wide 46cm deep 174.5cm high £250 - 350

**Lot 260**

An oak wardrobe, in the manner of Heal's, with four drawers to the side, 117cm wide 50cm deep 161.5cm high £250 - 350



259



260



262



263

**Lot 262**

A pair of patinated spelter bookends, by Max Le Verrier, modelled as mountain goats on marble plinths, 16.5cm high (2)  
£150 - 200

**Lot 263**

A pair of Art Deco phenolic and copper-mounted wall lights, 22cm wide  
17cm high (2)  
£80 - 120

**Lot 264**

An Art Deco walnut cocktail cabinet, of demilune fluted form, the upper section opening to reveal a mirrored interior, with a glass shelf and holders to the doors, over a mirrored slide, a cupboard below with a shelf and bottle holders, 92cm wide  
46cm deep  
168cm high  
£300 - 500

**Lot 265**

A pair of five novelty dice cocktail sticks, mounted on a stand with five further dice to the plinth, 12.5cm wide stand  
£80 - 120



264



265





**Lot 266**

An Art Deco sycamore and shagreen side cabinet,  
with ivory handles, the plain top over a shagreen mounted cupboard, with splayed brass  
mounted legs, with 'Janet Kaines Interiors' label,  
131cm wide  
46cm deep  
84.5cm high  
£8,000 - 12,000



267



269

**Lot 267**  
An Art Deco walnut occasional table, with canted corners, over reeded supports with an undertier, 61cm wide 46cm deep 42cm high  
£100 - 150

**Lot 268**  
An Art Deco burr walnut dining table, raised on a shaped stand, 134.5cm wide 98cm deep 68.5cm high, with a matched set of four chairs, 98cm high seat 51cm high (5)  
£150 - 200

**Lot 269**  
An Art Deco walnut sideboard, the raised central section with three drawers, flanked with cupboards, 153cm wide 57cm deep 120cm high  
£250 - 350



268



270



271

**Lot 270**  
A French silvered table lamp base, by Albert Marionnet, cast with berries, 20.5cm high overall  
£150 - 250

**Lot 271**  
An Art Deco spelter table lamp, the moulded opalescent shade flanked with a silvered lion and tiger, on a marble plinth, 37cm wide  
£100 - 150



**Lot 272**

A sterling silver berry and leaf plaque bar brooch,  
c.1935, marked silver and attributed to  
Bernard Instone,  
together with a pair of matching clip-on  
earrings,  
*marked sterling (3)*  
£70 - 100



272

**Lot 273**

An Art Deco cut-glass  
scent bottle,  
with a silver collar,  
*Birmingham, 1933,*  
and cut-glass details,  
14.5cm high  
£80 - 120



273



274

**Lot 275**

After F Lutiger,  
'IN THE ROBIN ROOM'  
a copper panel, *signed*  
and dated '05, with a  
label to the reverse,  
9.5 x 13cm, in an oak  
mount and frame  
£100 - 150



275

**Lot 276**

A marble figure of a  
lady wearing a tunic,  
raised on a matched  
column stand,  
164cm high overall  
stand 95cm high  
figure 69cm high  
£400 - 600



276

**Lot 277**

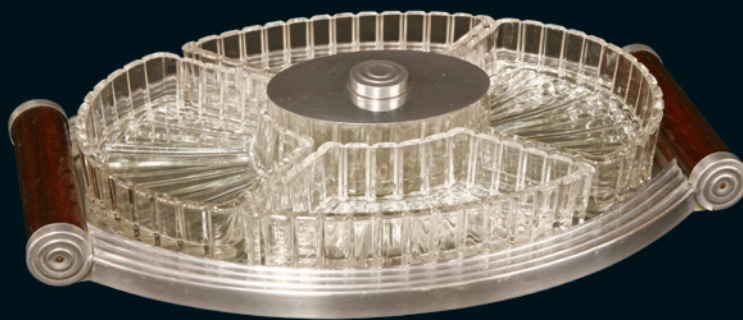
A Lalique glass  
'Nemours' bowl,  
with brown and black  
tinted details, *faint*  
*moulded mark,*  
25.5cm diameter  
£200 - 300



277



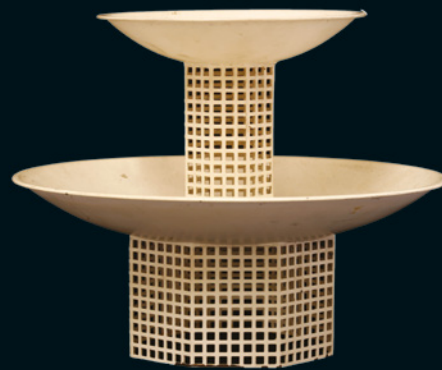
278



279



280



281

**Lot 278**

A Mappin and Webb silver-plated canteen of cutlery,  
in the Art Deco style  
£250 - 350

**Lot 279**

An Art Deco tray,  
of oval form, fitted with five segmented glass dishes, the centre dish  
with a lid,  
39cm wide  
£100 - 150

**Lot 280**

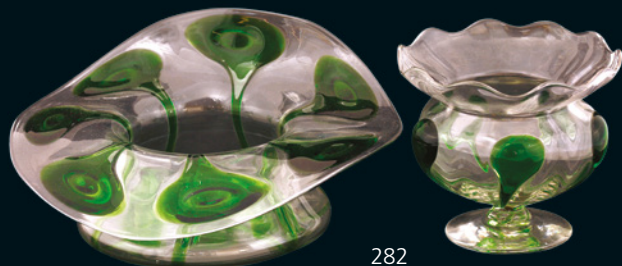
An Etling opalescent glass and mounted centrepiece,  
the bowl moulded with a sunflower, moulded mark 'Etling France 145',  
mounted on a metal and walnut stand,  
48cm wide  
16cm high  
£150 - 200

**Lot 281**

A two-tier painted comport,  
in the style of Wiener Werkstätte, the two bowls divided with pierced  
octagonal columns,  
27cm diameter  
21.5cm high  
£100 - 150

**Lot 282**

A Stuart & Son Art Nouveau glass 'Peacock' bowl,  
27cm diameter  
13cm high, and  
a vase,  
15cm diameter  
13cm high (2)  
£150 - 250



282



**Lot 283**

**E Ray (20th century)**  
TWO ADVERTISING STUDIES  
30 x 34cm and 30 x 44cm,  
mounted;  
**Nora Pearce**  
STUDY OF A LADY WITH  
A PARASOL  
Signed, watercolour,  
22 x 30cm framed (3)  
£100 - 150

**Lot 284**

**\*Frank Aveline (1877-1951)**  
STUDY OF A YOUNG LADY  
HOLDING A TUBE  
Signed l.r., pastel  
48 x 32cm  
£150 - 200

**Lot 285**

**\*Frank Aveline (1877-1951)**  
A YOUNG WOMAN IN  
A RED DRESS DRIVING  
A MOTOR CAR  
Signed l.r., oil on board  
52 x 73.5cm  
£400 - 600

**Lot 286**

**\*Frank Aveline (1877-1951)**  
A YOUNG LADY WITH  
ROSES  
Signed l.l., oil on board  
67 x 46.5cm  
£250 - 350



283



284



285



286



287

**Lot 287**

**\*Frank Aveline (1877-1951)**  
A PORTRAIT OF A LADY IN PEARLS AND  
A MINK FUR WRAP  
Signed l.r., within an art deco frame  
69 x 45.5cm  
£300 - 500

**Lot 288**

**\*Frank Aveline (1877-1951)**  
PORTRAIT OF A YOUNG SEATED LADY,  
WEARING A GREY EVENING DRESS WITH  
PURPLE CORSAGE  
Oil on board  
66.5 x 51cm  
£300 - 500

**Lot 289**

**\*Frank Aveline (1877-1951)**  
STUDY OF A YOUNG LADY, BUST LENGTH  
IN A GREEN HAT  
Signed l.m., oil on board  
54 x 40.5cm  
£100 - 150



288



289



290



291



292



294

**Lot 290**

A modern Cassina DS2 table,  
after a design by Charles Rennie  
Macintosh,  
75.5cm wide  
75.5cm deep  
75.5cm high  
£150 - 200

**Lot 291**

A pair of modern Cassina  
DS3 chairs,  
after a design by Charles  
Rennie Macintosh, with  
mother-of-pearl details and  
rush seats,  
53cm wide (2)  
£300 - 500

**Lot 292**

A pair of Art Deco walnut  
and rosewood bedside  
chests,  
with a stepped back over two  
shelves and a cupboard,  
35cm wide  
33cm deep  
112cm high (2)  
£450 - 550

**Lot 293**

Spare lot

**Lot 294**

An Art Deco walnut dressing table,  
with a bevelled edge triptych mirror, over seven drawers with chrome  
rectangular handles, raised on cabriole supports, the drawer lock stamped  
'Waring & Gillow Ltd. Lancaster', and labelled,  
114.5cm wide  
52cm deep  
152cm high,  
together with a cane-seated dressing stool,  
49cm wide  
65.5cm high  
seat 44cm high, and  
a bedside cabinet with a shelf over a cupboard,  
stamped and labelled,  
36cm wide  
32cm deep  
73.5cm high (3)  
£250 - 350



**Lot 295**

A pair of desk ornaments,  
modelled as a cheetah and a gazelle,  
on leaf-shaped wooden plinths,  
23.5cm long (2)  
£100 - 150



295

**Lot 296**

An ivory group,  
early 20th century, carved with a putto looking  
into an oval mirror, on a rectangular plinth,  
15cm high  
£600 - 800



296

**Lot 297**

Affortunato Gory (1895-1925),  
'Awaking', a bronze and ivory  
figure of a nude, her knee resting  
on a table, with a marble plinth,  
*signed 'Gory'*,  
23.5cm high  
£2,000 - 3,000



297

**Lot 298**

Ferdinand Preiss (1882-1943),  
'Aphrodite', a cold painted  
bronze and ivory figure, *signed  
'F Preiss'*, on an onyx plinth,  
22cm high  
£1,500 - 2,500

See Alberto Shayo, 'Ferdinand  
Preiss - Art Deco Sculptor The  
Fire and the Flame', p.108, by  
The Antique Collectors' Club  
2005, and Brian Catley, 'Art  
Deco and Other Figures', p.265,  
The Antique Collectors' Club.



298



**Lot 299**

**\*Pierre le Faguays (1892-1962)**

a pair of cold painted bronze and ivory figures of girls, on tapering marble plinths,  
31 and 28cm high (2)

**£4,000 - 6,000**





300

**Lot 300**

A pair of novelty Bakelite telephones, each 22cm wide (2)  
£100 - 150

**Lot 301**

A birchwood cigarette box, the hinged cover inset with borzoi dogs, 12.5cm wide, 9cm deep, 5.5cm high, roundel 4cm diameter  
£250 - 350

**Lot 302**

Attributed to Ferdinand Preiss (1882-1943), a cold painted bronze and ivory desk stand, modelled as a cherub seated on a snail, 8.5cm wide, 8cm high  
£500 - 700

**Lot 303**

An Art Deco painted ivory budgerigar, perched on a stand, 17cm high  
£150 - 200

**Lot 304**

A malachite mounted letter opener, c.1930, with an ivory blade, 21cm long, and a cast desk seal, modelled as a vulture, 9cm high (2)  
£100 - 150

**Lot 305**

Henry Kossowski (Polish, 1855-1921), a cast bronze and patinated sculpture of a lifeboatman, throwing a life belt, 53cm high  
£200 - 300



301



302



303



304



305



306 dining suite



306 sideboard

**Lot 306**

An Art Deco maple dining room suite,  
probably by Epstein, comprising:

**a table,**

the shaped rectangular top raised on a 'U' shaped stand, on an inverted plinth,  
195cm wide  
103cm deep  
78cm high,

**six dining chairs,**

with cream leather upholstery,

**a sideboard,**

with a central bow front fluted cabinet, opening to reveal a mirrored pink-tinted interior, flanked with cupboards enclosing a drawer to each,  
172cm wide  
59cm deep  
110cm high (8)

£2,500 - 3,500





307

**Lot 307**  
A marble torso,  
on a wrought iron stand,  
84cm high  
£700 - 900

**Lot 308**  
An Indian Deccan carved hardwood and polychrome decorated plaster mould, early 20th century, later mounted on contemporary steel legs and with a plate glass top to form a coffee table, 119.5cm wide 57cm deep 50cm high, together with a similar wall panel, 30.5cm wide 64.5cm high (2)  
£700 - 900



308



309

**Lot 309**  
An Indian Deccan carved hardwood and polychrome decorated plaster mould, early 20th century, later mounted on contemporary steel legs and with a plate glass top to form a coffee table, 97cm wide 57cm deep 50cm high, together with a similar wall panel, 25.5cm wide 70cm high (2)  
£400 - 600



310

**Lot 310**  
A moulded glass table lamp base, 30cm high  
£150 - 200

**Lot 311**  
An Art Deco spelter desk stand, mounted with a woodpecker, flanked with an inkwell, signed 'Franjou', on a marble plinth, 22cm wide  
£100 - 150



311



312



313



314



315



316

#### Lot 312

A pair of Art Deco-style walnut library tables, the tops with leather insets within broad brass borders, on plain end supports with ebony beading, tops 110cm wide 60cm deep (2)  
£300 - 500

#### Lot 313

A pair of Art Deco-style walnut library tables, the tops with leather insets within broad brass borders, on plain end supports with ebony beading, tops 110cm wide 60cm deep (2)  
£300 - 500

#### Lot 314

A Georg Jensen silver strainer, import marks for London 1927, finely pierced and with a beaded border, marked 925, 'GJ' monogram, 14.5cm long  
£100 - 150

#### Lot 315

A Kieler Kunst-Keramik pottery inkwell, c.1924-30, in the form of an elephant, inscribed 'KKK/804 A.TH Germany', 18cm long  
£200 - 300

#### Lot 316

A silver bronze card tray, mounted with a child holding a teddy bear, stamped 'M Bertin', 11.5cm wide 8cm high  
£200 - 300

#### Lot 317

A Chad Valley RMS Queen Mary jigsaw puzzle, 72 x 39cm, mounted and framed  
£100 - 150

#### Lot 318

A silver-plated cocktail shaker, 26cm high, a pair of chrome and Bakelite-mounted candlesticks, 11cm high, and a preserve dish, with hinged covers, on a tray, 19.5cm wide (4)  
£80 - 120

#### Lot 319

An unusual green Bakelite shoe horn, the handle as a plated heel of a shoe, 38.8cm, and an enamel tea strainer, in three parts with a wicker handle, 11.5cm long (2)  
£100 - 150

#### Lot 320

An Art Deco fan, attributed to Louise Boulanger, with a gold ground with blue and black designs, signed 'Louise Boulanger' to the reverse, 60cm wide  
£300 - 500

Louise Boulanger (née Melenot) was born in 1878. She became apprenticed to a dressmaker and, in 1927, operated a studio with her husband.



317



318



319



320





321

**Lot 321**

**Onslow Ernest Whiting (1872-1937),**  
 'Pegasus', a patinated bronze sculpture, signed 'Onslow Whiting 1926', on a marble plinth, 22.5cm high  
 £150 - 250

Onslow Ernest Whiting was born in Shoreditch to a house-decorator father and a dressmaker mother. Between 1901 and 1927, he worked as a teacher of silversmithing and goldsmithing at the Central School of Arts and Crafts.



322

**Lot 322**

**Onslow Ernest Whiting (1872-1937),**  
 'Pegasus', a cast white metal sculpture, lacking wings, on a marble plinth, 21.5cm high  
 £150 - 200

Possibly a maquette for lot 321.

**Lot 323**

**\*Donald Gilbert (1900-1961),**  
 a mouse, an animalier bronze, signed 'Gilbert', on an hexagonal plinth, 11cm high  
 £200 - 300

**Lot 324**

**\*Donald Gilbert (1900-1961),**  
 a frog, an animalier bronze, signed 'Gilbert', 7cm high  
 £200 - 300

**Lot 325**

**\*Donald Gilbert (1900-1961),**  
 a jaguar, an animalier bronze, signed 'Gilbert', 7cm high  
 £200 - 300



323



324



325



326



327

**Lot 326**  
A Goldscheider mask,  
printed mark, 'Goldscheider, West Germany',  
numbered '12, mould '544',  
22cm high  
£150 - 200

**Lot 327**  
An Art Deco chrome and glass cocktail  
dish,  
with coromandel-mounted finial and handles,  
35cm wide  
£100 - 150

**Lot 328**  
An Art Deco Walther Glas pink moulded  
table lamp,  
37cm high  
£150 - 200

**Lot 329**  
A pair of Art Deco painted spelter figures  
of dancers,  
on onyx bases,  
19cm high (2)  
£80 - 120



328



329



# POST-WAR AND MODERN OBJECTS, FURNITURE AND LIGHTING

330-734



330



331



332



333



334

## Lot 330

A Moorcroft leaf and berry flambé bowl,  
1930s, impressed marks and blue signature,  
23cm diameter  
£150 - 200

## Lot 331

A Wedgwood 1953 coronation mug,  
designed by Eric Ravilious, with a printed  
design and highlighted in yellow and  
pink, printed mark,  
10.2cm high  
£150 - 200

## Lot 332

A Wedgwood green pottery vase,  
designed by Keith Murray, of squat form,  
impressed with facsimile signature,  
17cm high  
£200 - 300

## Lot 333

A Christian Dior three-tier and faceted  
'Aurora Borealis' crystal necklace,  
c.1950, signed to clasp 'Dior', in a box  
£200 - 300

## Lot 334

A gilt metal, turquoise, enamel and  
paste dress clip,  
designed by Max Boinet for Schiaparelli,  
stamped 'Made in France',  
13cm long  
£500 - 700

## Lot 335

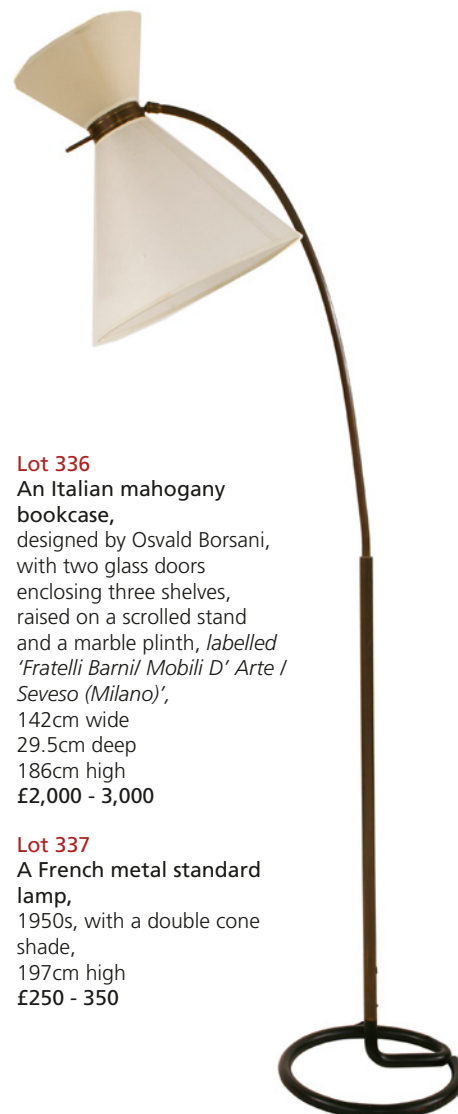
A pair of upholstered reclining  
armchairs,  
71cm wide  
88cm high  
seat 40cm high (2)  
£400 - 600



335



336



337

**Lot 336**  
An Italian mahogany bookcase, designed by Osvald Borsani, with two glass doors enclosing three shelves, raised on a scrolled stand and a marble plinth, labelled '*Fratelli Barni Mobili D'Arte / Seveso (Milano)*', 142cm wide 29.5cm deep 186cm high £2,000 - 3,000

**Lot 337**  
A French metal standard lamp, 1950s, with a double cone shade, 197cm high £250 - 350

#### FURNITURE MADE OF BRAZILIAN ROSEWOOD (DALBERGIA NEGRA)

To comply with CITES Regulations on post-1947 furniture made of Brazilian Rosewood, all post-war rosewood furniture items have Article 10 certificates.

If you are purchasing rosewood furniture for commercial purposes and not solely for your own use, CITES regulations require you to obtain your own certificate. You would need to contact the Animal Health and Veterinary Laboratories Agency ('AHVLA') and, as part of the process of obtaining your document, it is a requirement that you have seen sight of the Sworders' certificate or are aware of its reference number.

It is therefore the responsibility of commercial buyers to ensure that they obtain a copy of the appropriate certificate, or the certificate reference number, after purchase from Sworders Fine Art Auctioneers.

All certificate numbers are also listed on our website [www.sworder.co.uk](http://www.sworder.co.uk).



338

**Lot 338 §**  
A rosewood dining table, 1950s, designed by Osvaldo Borsani, with a glass top, 202cm wide 103cm deep 80cm high £300 - 500

A10 CITES  
Licence no. 576652/02





339

**Lot 339**

A Murano glass vase, possibly by Dino Martens for Aureliano Toso, c.1952, of tapering form, with polychrome inclusions, with a label 'MADE IN ITALY' and numbered '3509' in red, 36.5cm high  
£500 - 700

## Literature:

See Marc Heireman's 'Vetreria Aureliano Toso, Murano 1938-1968: Designs by Dino Martens, Enrico Potz and Gino Poli', 2016, for similar designs and examples by Dino Martens. The number '3509' relates to the model list and, even though this is incomplete, the date of similar numbers is 1952. Also, there is a similar design illustrated - No. 055.

**Lot 340**

A pair of Italian ebonised benches, reupholstered, 154cm wide 46cm deep 51cm high (2)  
£400 - 600



340



341



342



343

**Lot 341**

A large composition sculpture, mother and child, on a plinth base, 110cm high  
£200 - 400

**Lot 342**

An Italian fruitwood and white laminated desk, the floating top over five drawers to the side, on brass sabot caps, 109.5cm wide 60cm deep 75cm high  
£500 - 700

**Lot 343**

An Italian sycamore three-drawer chest, of slope form, with brass handles, raised on angular supports and brass-mounted front legs, 85cm wide 43cm deep 64cm high  
£400 - 600

**Lot 344**

Panni, a bronze sculpture, signed in yellow 'PANNI-67', 19cm wide 13cm high  
£200 - 400



344



345

**Lot 345**

An Italian tricolour enameled aluminium and brass chandelier, c.1960s, in the manner of Arredoluce, the turned brass stem with a conical corona, the lower section with a tapering conical cup supporting an hexagonal plinth with three arms, each with a blue, yellow or red shade and ball finial, 45cm wide 53cm high £300 - 500

**Lot 346**

An Italian glass mirror, with a rectangular plate, mounted on a shaped glass panel, 49cm wide 69cm high £100 - 150



347



346

**Lot 347**

An Italian mahogany coffee table, the marble top over a pierced frieze to each side, with a shaped undertier, on shaped and tapering supports, 105cm wide 48cm deep 49cm high £250 - 350



348

**Lot 348**

A D70 lounge, designed by Osvaldo Borsani, 192cm wide £2,000 - 3,000

**Lot 349**

A set of eight Italian walnut dining chairs, designed by Osvaldo Borsani, with green upholstery (8) £2,500 - 3,000



349





350



350 open

**Lot 350**

An Italian wall-mounted triptych mirror, by FontanaArte, with an olive frame and a silvered floral central panel, hinged to reveal the mirrors, 58cm wide 134cm high £600 - 800

**Lot 351**

A pair of Italian ash and laminated blue console tables, c.1960, designed by Gio Ponti for Parco dei Principi Hotel, with brass sabots, 120cm wide 35cm deep 76cm high (2) £2,000 - 3,000



351



352

**Lot 352**

A set of twelve dining chairs, designed by Carlo de Carli, *labelled*, with cream seat and backs (12) £4,000 - 6,000



353

**Lot 353**

An Italian circular wall mirror, the bevelled plate mounted on a shaped circular mirror glass frame, 65.5cm diameter  
£100 - 150



354

**Lot 354**

A pair of French sprung reclining armchairs, 1950s, reupholstered, 70cm wide 80cm deep 88cm high (2)  
£400 - 600

The vendor insists these are the most comfortable chairs he has sat in - we can second that!

**Lot 355**

A French rosewood and marble top console table, with a marble top over a single drawer, 126cm wide 32cm deep 83cm high, together with a mirror en suite, 122cm wide 102.5cm deep (2)  
£300 - 500



355



356



357

**Lot 356**

An Italian rectangular mirror, 1950s, 54cm wide 72cm high  
£100 - 150

**Lot 357**

An Italian brass three-branch ceiling light, with a shallow circular shade, 93cm high  
£150 - 250

**Lot 358**

An Italian teak desk, designed by Gio Ponti, with three drawers to each side, 123cm wide 67cm deep 78cm high  
£2,000 - 3,000



358





#### Lot 359

A pair of armchairs, designed by Enrico Ciuti for Cassina with red seats and backs (2)  
£1,200 - 1,500

#### Lot 360

An Italian two-light standard lamp, 156cm high  
£300 - 500



362

#### Lot 361

A pair of reclining armchairs, designed by Gianni Moscatelli for Formanova, black and white upholstered seats and moulded armrests, with a two-way setting (2)  
£1,000 - 1,500

#### Lot 363

A walnut circular centre table, designed by Gio Ponti, 130cm diameter 80cm high  
£2,000 - 3,000



363

#### Lot 362

A pair of Italian Stilnovo enamelled two-light wall lamps, 25.5cm long (2)  
£200 - 300

#### Lot 364

A set of six faux animal skin dining chairs, each with brass tubular stands (6)  
£400 - 600

#### Lot 365

A pair of Italian black lacquered bedside cabinets, 1950s, with glass tops, over a cupboard with lacquered brass handles and brass sabot feet, 65cm wide 34.5cm deep 59.5cm high (2)  
£300 - 500



364



365



366



367



368



369

**Lot 366**  
An Italian desk lamp,  
designed by Angelo  
Lelli for Arredoluce,  
with an hinged  
enameled shade,  
36cm high  
£400 - 600

**Lot 367**  
A walnut table  
mirror,  
1950s, with a bevelled  
glass plate,  
46cm wide  
52.5cm high  
£100 - 150

**Lot 368**  
A pair of walnut bedside  
cupboards,  
1950s, with a single drawer over  
a cupboard,  
49cm wide  
36cm deep  
53cm high (2)  
£200 - 300

**Lot 369**  
A maple dining room suite,  
1950s, comprising:  
a table,  
152.5cm wide  
82cm deep  
76.5cm high,  
four chairs,  
with brass sabot caps, and  
a sideboard,  
with a three-quarter gallery, with  
four drawers and three cupboards  
with brass handles, *labelled twice*,  
203cm wide  
41.5cm deep  
84cm high (6)  
£250 - 300



370



372



371

**Lot 370**  
A 'Pernilla' lounge chair,  
designed by Bruno Mathsson for  
Dux  
£200 - 300

**Lot 371**  
An oak and upholstered sofa  
bed,  
designed by Hans Wegner for  
Getama,  
195.5cm wide  
88cm deep  
78cm high  
£200 - 300

**Lot 372**  
A beechwood chair and ottoman,  
designed by Yngve Ekström for  
Swedese, *branded (2)*  
£150 - 200





373

**Lot 373 §**

A set of four 'Scandia' rosewood dining chairs,  
designed by Hans Brattrud in 1957, each  
with laminated slats on a chrome frame (4)  
**£300 - 500**

A10 CITES Licence no. 576755/03

**Lot 374 §**

A pair of Danish rosewood sideboards,  
c.1960, designed by Arne Vodder for Sibast,  
with *maker's label*,  
150cm wide  
47cm deep  
85cm high (2)  
**£1,500 - 2,500**

A10 CITES Licence no. 576652/02



374

**Lot 375 §**

A Danish rosewood dining table,  
1970s, designed by Erik Buck for C.J. Rosengården, the  
table with an extending oval top, *stamped 'Rosengården'*,  
163cm wide  
263cm extended  
114cm deep  
71cm high, and  
**eight dining chairs (9)**  
**£400 - 600**

A10 Cites Licence no. 576647/01



375

**FURNITURE MADE OF BRAZILIAN ROSEWOOD (DALBERGIA NEGRA)**

To comply with CITES Regulations on post-1947 furniture made of Brazilian Rosewood, all post-war rosewood furniture items have Article 10 certificates.

If you are purchasing rosewood furniture for commercial purposes and not solely for your own use, CITES regulations require you to obtain your own certificate. You would need to contact the Animal Health and Veterinary Laboratories Agency ('AHVLA') and, as part of the process of obtaining your document, it is a requirement that you have seen sight of the Sworders' certificate or are aware of its reference number.

It is therefore the responsibility of commercial buyers to ensure that they obtain a copy of the appropriate certificate, or the certificate reference number, after purchase from Sworders Fine Art Auctioneers.

All certificate numbers are also listed on our website [www.sworder.co.uk](http://www.sworder.co.uk).



376

**Lot 376**

An adjustable pendant lamp, designed by Hans Wegner for Louis Poulsen, 49.5cm diameter  
£300 - 500



377

**Lot 377**

A set of four CH23 chairs, designed by Hans Wegner and made by Carl Hansen, Denmark, *restrung, branded to the frames (4)*  
£1,000 - 1,500

**Lot 378**

A teak rocking chair, designed by Hans Wegner for Tarm Stole og Møbelfabrik, with wool upholstered cushion and seat, *labelled*  
£600 - 800

**Lot 379**

A 'Long Chair', 1960s, after the original designed by Marcel Breuer for Isokon in 1936, with a herringbone upholstered seat, 140cm long  
£400 - 600

**Lot 380 S**

A Danish rosewood drinks cabinet, with a cupboard enclosing a shallow shelf with two Formica-topped slides, on tapering legs, *branded 'No. 521-3 'BM'*, 100.5cm wide  
43.5cm deep  
108cm high  
£300 - 500

A10 CITES Licence no. 576636/01

**Lot 381 S**

A Danish rosewood table, raised on three strut supports, 137cm diameter  
73cm high  
£250 - 350

A10 CITES Licence no. 576636/02

**Lot 382**

A teak 'cloud' coffee table, designed by Neil Morris, the shaped top over tapering supports, *labelled 'Trevor, Page & Co. Ltd., Norwich'*, 93cm wide  
97cm deep  
45cm high  
£250 - 350



378



379



380



381



382



**Lot 383**

\*Alan Caiger-Smith (b.1930),  
a lemonade set by Aldermaston Pottery, c.1977,  
comprising a jug and six goblets in a green and  
brown design,  
jug 24cm high  
goblets 15cm high (7)  
£100 - 150



383

**Lot 384**

\*Seth Cardew (b.1934),  
a milk-glazed vase, with hatched and floral panels,  
39cm high  
£100 - 200



384

**Lot 385**

\*A collection of John Gay studio pottery,  
comprising various vases, bowls and plates in  
multicoloured glazes, *most with 'JG' monogram*,  
largest 25.5cm high (13)  
£100 - 150



385

**Lot 386**

\*Michael Casson (1925-2003),  
a large salt-glazed waisted vase, with inscribed  
designs, *seal mark*,  
64.5cm high  
£150 - 200



386

**Lot 387**

\*Michael Casson (1925-2003),  
a salt-glazed jug, *seal mark, restored to spout*,  
45cm high  
£100 - 150



387

**Lot 388**

\*Clive Bowen (b.1943),  
a glazed terracotta charger centred with a leaping  
fish, within a scrolled border,  
55cm diameter  
£100 - 150



388

**Lot 389**

\*Clive Bowen (b.1943),  
a glazed charger centred with a shrimp,  
within a scrolled border,  
57cm diameter  
£100 - 150



389

**Lot 390**

\*Nic Collins (b.1958),  
an ovoid wood-fired stoneware jar, *incised*  
*'Nic Collins'*,  
28cm high  
£100 - 150



390

**Lot 391**

\*Nic Collins (b.1958),  
a stoneware handled dish,  
*incised 'Nic Collins 96'*,  
33cm wide  
£100 - 150



391



392



393

**Lot 392**

\*Jane Hamlyn (b.1940),  
a salt-glazed stoneware dish with a  
shaped border, incised decoration,  
*impressed seal mark*,  
36.5cm wide  
£100 - 150



394



395

**Lot 393**

\*Jane Hamlyn (b.1940),  
a salt-glazed stoneware dish with a  
shaped border, incised decoration,  
*impressed seal mark*,  
37cm wide  
£100 - 150

**Lot 394**

\*Michael Casson (1928-2007),  
a salt-glazed jug, with a blue and  
brown design, *impressed seal mark*,  
30cm high  
£100 - 150

**Lot 395**

\*Michael Casson (1925-2007),  
a salt-glazed jug of waisted form,  
39.5cm high  
£100 - 150

**Lot 396**

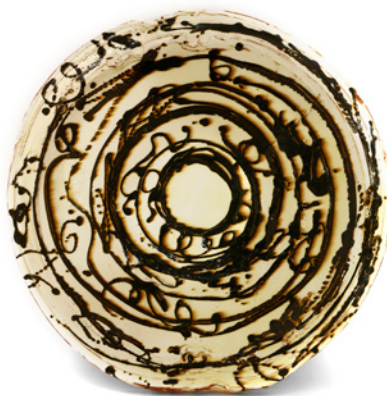
\*Dylan Bowen (b.1967),  
a slipware charger, with a cream  
ground and brown radiating  
designs,  
46cm diameter  
£100 - 150

**Lot 397**

\*Michael Casson (1925-2007),  
a salt-glazed stoneware quatrefoil  
basket, raised on lug feet,  
*impressed stamp*,  
32cm high  
£100 - 150

**Lot 398**

\*William Marshall (b.1923),  
a square dish, with white glaze  
details, *impressed initials*,  
28.5cm square  
£150 - 200



396



397



398



399



400

**Lot 399**

\*Philomena Prestell (b.1951),  
a slabwork vase, with transfer panels,  
*signed*,  
33.5cm high  
£100 - 150

**Lot 400**

\*Philomena Prestell (b.1951),  
a slabwork jug, with transfer panels, *signed*,  
39cm high  
£100 - 150





401

**Lot 401**

\*Glyn Hugo (b.1934),  
a conical stoneware vessel, *signed 'Hugo'*,  
58cm high  
£100 - 150



402

**Lot 402**

\*Jim Malone (b.1946),  
a glazed vase, with incised details, on  
a green ground with a white neck,  
*impressed 'J M' and with Ainstable seal*,  
39cm high  
£170 - 220

**Lot 403**

\*Mike Dodd (b.1943),  
a stoneware jug with vertical combed  
details, *impressed 'MD' initial seal*,  
32.5cm high  
£150 - 200

**Lot 404**

\*Mike Dodd (b.1943),  
a stoneware vase, incised with wheat,  
*impressed 'MD' initial seal*,  
33cm high  
£100 - 150



406



407



403

**Lot 405**

\*Malcolm Pepper  
(1937-1980),  
a crackle-glazed charger, with  
blue brushwork, *impressed seal  
mark*,  
36cm diameter  
£100 - 150

**Lot 406**

\*Malcolm Pepper  
(1937-1980),  
a stoneware vase, with an  
octagonal facet copper-glazed  
body, *impressed seal*,  
25cm high  
£100 - 150

**Lot 407**

\*Jim Malone (b.1946),  
a stoneware jug, with a black/  
brown glaze, with thumb  
details, *impressed initials*,  
32cm high  
£150 - 200

**Lot 408**

\*Jim Malone (b.1946),  
a white glazed vase, incised  
with fish, *impressed initials  
and Ainstable seal*,  
27cm high  
£150 - 200

**Lot 409**

\*Jim Malone (b.1946),  
a stoneware vase, with a  
green glazed and incised  
glass detail, *impressed initials  
'J M' and Ainstable seal*,  
36cm high  
£150 - 200



405



408



409



410



411



412



413



414



415



416



417



418



**Lot 410**

\*Clive Bowen (b.1943),  
a brown/green glazed jug,  
*unmarked*,  
30.5cm high  
£80 - 120

**Lot 411**

\*Alan Caiger-Smith  
(b.1930),  
an Aldermaston pottery  
tureen, cover and stand,  
*signed with initials and  
date code*,  
26cm high (3)  
£100 - 150

**Lot 412**

\*Joanna Howells  
(b.1960),  
a celadon group of five  
graduated vessels and  
covers,  
19 to 57cm high (10)  
£200 - 300

**Lot 413**

\*John Chipperfield,  
a 'Toucan' jug, *printed  
mark*,  
63.5cm high  
£80 - 120

**Lot 414**

\*Mike Dodd (b.1943),  
a glazed stoneware handled vase with  
vertical incised and impressed bands,  
43.5cm high  
£150 - 200

**Lot 415**

\*Bernard Rook (b.1938),  
a turquoise glazed vase,  
43.5cm high  
£80 - 120

**Lot 416**

\*Jane Hamlyn (b.1940),  
a salt-glazed candlestand,  
50cm high  
£100 - 150

**Lot 417**

\*Alan Wallwork (b.1931),  
a vase and a lamp base,  
33 and 29.5cm high (2)  
£100 - 150

**Lot 418**

\*David Lloyd-Jones (b.1928),  
a stoneware bowl,  
31cm diameter, and  
a casserole dish and cover,  
33cm diameter (3)  
£100 - 150



**Lot 419**

A Danish teak circular dining table,  
with a single hinged leaf,  
107.5cm diameter extending to  
245cm  
71.5cm high  
£150 - 200



419

**Lot 420 §**

A rosewood 'Royal System',  
1970s, designed by Poul Cadovius,  
comprising four cupboards, two with sliding  
cupboard fronts, four shelves,  
each panel 250cm high x 80cm wide  
£600 - 800

A10 CITES Licence no. 576632/02



421



420

**Lot 421 §**

A Danish rosewood coffee table,  
c.1970, inset with tiles, branded  
'Bacafra Porcelains Fabrik', with the  
'Danish Furniture Makers' Control'  
label,  
60cm square  
50cm high, and  
another coffee table,  
with a tile top,  
72.5cm square  
50cm high (2)  
£300 - 500

A10 CITES Licence no. 576632/01

**Lot 422**

A Danish pine and leather  
lounge armchair,  
with a slung seat  
£150 - 250

**Lot 423**

An Italian floor lamp,  
in the style of Sciolari,  
173cm high  
£400 - 600



422



423



424



425



426



427



428

**Lot 424 §**

A Danish rosewood desk with sideboard, c.1960, designed by Arne Vodder for Sibast, *labelled*, 204cm wide 73cm deep 175cm high £1,500 - 2,500

A10 CITES Licence no. 576652/01

**Lot 425**

A Danish oak upholstered elbow chair £100 - 150

**Lot 426**

A pair of Danish bentwood armchairs, with tan leather seats (2) £200 - 300

**Lot 427 §**

A Danish rosewood coffee table, inset with Royal Copenhagen panels, 95cm square 50cm high £100 - 150

A10 CITES Licence no. 568357-04.

**Lot 428**

A Christofle silvered metal 'Cardinal' vase, designed by Lino Sabattini, 37cm high, a Christofle 'Pear' dish, 22.5cm diameter, a Sabattini silvered dish, 39.5cm diameter, and a pair of Danish salad servers, 39.5cm long (5) £250 - 350

**FURNITURE MADE OF BRAZILIAN ROSEWOOD (DALBERGIA NEGRA)**

To comply with CITES Regulations on post-1947 furniture made of Brazilian Rosewood, all post-war rosewood furniture items have Article 10 certificates. If you are purchasing rosewood furniture for commercial purposes and not solely for your own use, CITES regulations require you to obtain your own certificate. You would need to contact the Animal Health and Veterinary Laboratories Agency ('AHVLA') and, as part of the process of obtaining your document, it is a requirement that you have seen sight of the Sworders' certificate or are aware of its reference number.

It is therefore the responsibility of commercial buyers to ensure that they obtain a copy of the appropriate certificate, or the certificate reference number, after purchase from Sworders Fine Art Auctioneers.

All certificate numbers are also listed on our website [www.sworder.co.uk](http://www.sworder.co.uk).





429

**Lot 429**

A silver carafe,  
Carlo Scarpa for Cleto Munari, stamped  
925, facsimile signature and numbered  
'04-300-94',  
22cm high  
£800 - 1,200



430

**Lot 433**

A contemporary ebonised ash armchair,  
with a suede seat,  
55cm wide  
77cm high  
seat 50cm high  
£80 - 120

**Lot 430**

An Italian brushed steel and glass  
five-light cubic chandelier,  
by Gaetano Sciolari (1927-1994), c.1970,  
the central stem supporting five cube-shaped  
lights with glass shades,  
27cm wide  
27cm deep  
70cm high  
£300 - 500

**Lot 431**

An Italian wall mirror,  
with a trapezoid plate, a gilt metal edge with  
a wire surmount,  
50cm wide  
72cm high  
£100 - 150

**Lot 432**

A Stilnovo reading lamp,  
1960s,  
150cm high  
£100 - 150



431



433



432



434

**Lot 434**

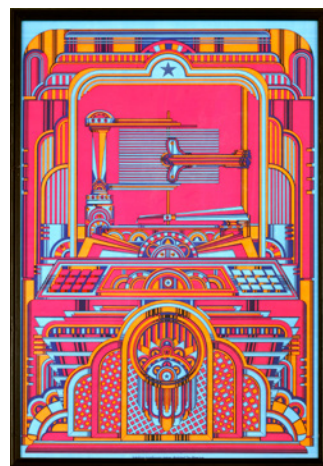
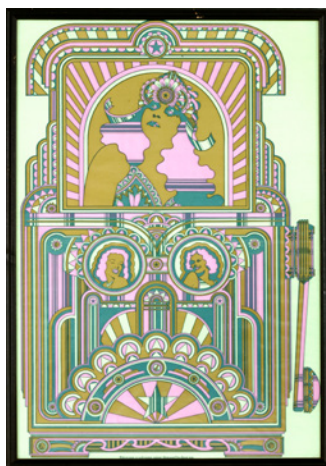
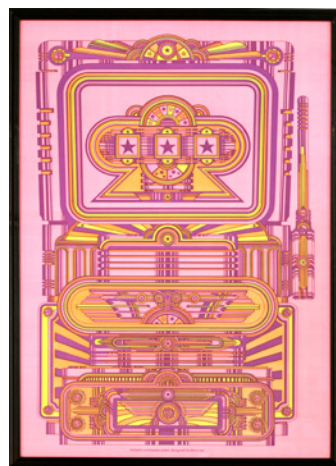
A bolt of printed fabric,  
1970s  
£80 - 120

**Lot 435**

Four David Fairbrother-Roe posters,  
JACKPOT,  
JUKEBOX,  
POLYSCOPE,  
PINBALL,  
designed for Polypops as wrapping paper,  
48.5 x 73cm, framed (4)  
£200 - 400

**Lot 436**

Three posters:  
by Stanley Mouse and Alton Kelly,  
10TH BIENNIAL WILDERNESS CONFERENCE 1967,  
and two by Rick Griffin,  
'EL CHINGADERO' 1973, and  
'THE GOSPEL OF JOHN' 1980,  
largest 48 x 73cm, all framed (3)  
£100 - 150



435



436



**Lot 437**

A miniature chrome two-tier drinks trolley, 26cm wide, and a toast rack (2)  
£70 - 90



437

**Lot 438**

An unusual abstract aluminium sculpture, 19cm high, together with a figure, 12.5cm high (2)  
£100 - 200



438



439



440

**Lot 439**

A P3 rattan lounger, designed by Tito Agnoli in 1960, 100cm wide, 60cm deep, 68cm high  
£200 - 300

**Lot 440**

A Danish banana settee, of concave form with beige upholstery, 220cm wide, 80cm high, seat 45cm high  
£500 - 800



441

**Lot 441**

A contemporary 'Balzac' armchair and ottoman, designed by Matthew Hilton, in brown leather (2)  
£600 - 800

**Lot 442**

An Italian glass and brass table lamp, with a modern shade, 41cm high  
£150 - 200



442



443

**Lot 443**

A teak armchair, with red upholstered seat and back  
£150 - 250



444



445

**Lot 444**

A large gilt metal-mounted, limed oak and calamander partners' desk, by Tim Gosling, the inset leather writing surface centred with lidded compartments, over three frieze drawers each side, each pedestal with three drawers, the reverse with three drawers and a cupboard, flanked with fluted stiles, 219.5cm wide  
120cm deep  
76cm high  
**£4,000 - 6,000**

Designer to the rich and famous, Tim Gosling is one of Britain's foremost contemporary craftsmen. His bespoke pieces are sought after around the globe by interior designers and private clients alike.

**Lot 445**

An Italian desk lamp, with an enamelled saucer shade with two fittings, on a cast plinth, 41cm high  
**£100 - 150**





446

**Lot 446**

An Italian vellum and fruitwood side cabinet, by Paolo Buffa, with satin legs over nine drawers and splayed legs, 182.5cm wide 51cm deep 78cm high £2,000 - 3,000

**Lot 447**

An Italian blue lacquered aluminium and opaline glass 'Platea' table lamp, c.1965-70, by Leonardo Ferrari and Franco Mazzucchelli-Tartaglino for Artemide, with a dish-shaped circular base supporting two opaline glass shades, 40cm wide 40cm high £400 - 600

**Lot 448**

A Danish green upholstered settee, 1950s, with a stained wood show frame, 180cm wide 73cm deep 80cm high £200 - 300



447



448



449



450



451

**Lot 449**

A Danish teak coffee table,  
with reversible top and a slatted undertier,  
148cm wide  
59.5cm deep  
53cm high  
£200 - 300

**Lot 450**

A Danish black leather three-seater settee,  
185cm wide  
85cm deep  
70cm high  
£300 - 500

**Lot 451**

A mahogany single pedestal desk  
by Peter Hvidt for Søborg Møbler,  
with side drawers,  
160cm wide  
80cm deep  
73cm high  
£100 - 200

**Lot 452**

A Danish teak sideboard,  
two drop doors over drawers,  
160cm wide  
46cm deep  
128cm high  
£200 - 300



452





453

**Lot 453**

A Danish black leather three-seater settee, raised on metal legs, 200cm wide 85cm deep 78cm high £300 - 500

**Lot 454**

A pair of 'Atlantis' lounge chairs, designed by Søren Nissen and Ebbe Gehl for Jeki, with leather seats on revolving stands, 55cm wide (2) £300 - 500



454

**Lot 455**

A large four-light ceiling light, each light with a perspex shade, 52.5cm wide 52.5cm deep 142cm high £500 - 800



455

**Lot 456**

A Danish teak sideboard, with an arrangement of cupboards and drawers, 152cm wide 45cm deep 130cm high £200 - 300

**Lot 457**

A set of six teak boomerang dining chairs, by Erik Christensen for Slagelse, with upholstered seats (6) £500 - 800



456



457



458



459



460



461

**Lot 461**

A pair of Soane Britain oak window seats, replicas of chairs in Lambeth Palace, 113cm wide 46cm deep 80cm high (2)  
£1,500 - 2,000

**Lot 462**

A pair of Florence Knoll lounge chairs, for Knoll Associates, 90cm wide 75cm deep 80cm high, and a pair of matching tables, 54.5cm wide 61cm deep 43cm high (4)  
£1,500 - 2,000



462

**Lot 458**

A Lane walnut block front cabinet, over shelves and three internal drawers, 101cm wide 52.5cm deep 128cm high  
£200 - 300

**Lot 459**

A Danish settee, with a shaped front, stained beech wood details, on brass caps, 180cm wide  
£400 - 600

**Lot 460**

An Hermès wicker tray, with leather handles stamped 'Hermès', 53cm wide 43cm deep  
£100 - 150



**Lot 463**

Two Danish high and low back black leather lounge chairs, by Stouby in the style of Børge Mogensen (2)  
£300 - 500



463

**Lot 464**

A Wassily chrome lounge chair, designed by Marcel Breuer, with damage  
£80 - 120

**Lot 465**

A pair of grey leather loungers, 1970s, raised on revolving stands (2)  
£200 - 300

**Lot 466**

\*Sam Walsh (1934-1989)  
MICHELANGELO'S DAVID  
Signed I.I., and dated '74',  
airbrush on canvas  
91 x 91cm  
£300 - 500

Purchased directly from the artist in 1974.



464

**Lot 467**

A 'Rover' armchair, designed by Arne Jacobsen, with a stained ash frame and cowhide seat, labelled 'Designed by Arne Jacobsen',  
83cm wide  
83cm deep  
70cm high  
£450 - 550

**Lot 468**

A 'Rover' armchair, designed by Arne Jacobsen, with a stained ash frame and cowhide seat,  
83cm wide  
83cm deep  
70cm high  
£450 - 550



465



466



467



468

**Lot 469**

A large Edward Fields wool rug, in cream, pink and green, 500 x 410cm  
£300 - 500

**Lot 471**

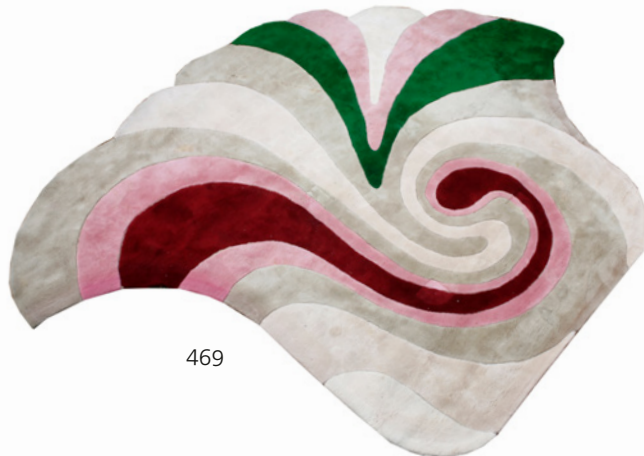
A 'Valigia' desk lamp, designed by Ettore Sottsass for Stilnovo, chrome and enamelled, 33.5cm wide 37cm high  
£200 - 300

**Lot 470**

A pair of steel and upholstered loungers, 65cm wide (2)  
£250 - 350

**Lot 472**

A pair of walnut cabinets, designed by Jens Risom, *labelled*, 149cm wide 51cm deep 83.5cm high (2)  
£400 - 600



469



470



471

**Lot 473**

A pair of marbled mosaic console tables, with bevelled glass tops, 125cm wide 46cm deep 74cm high (2)  
£300 - 500

**Lot 474**

An American black lacquered and brushed chrome cabinet, 190cm wide 46cm deep 71cm high, and a four-drawer chest, 84.5cm wide 46cm deep 97cm high (2)  
£400 - 600



472



473  
table bases



474





475



476



477



478

**Lot 475**

A large Memphis-style desk,  
80cm deep  
81.5cm high  
£300 - 500

**Lot 476**

A contemporary glass  
coffee table,  
the circular top raised on a  
stepped glass base,  
106cm diameter  
40cm high  
£250 - 450

**Lot 477**

A walnut desk,  
designed by Jens Risom,  
*labelled*,  
157.5cm wide  
86cm deep  
93.5cm high  
£400 - 600

**Lot 478**

A pair of brass hexagonal  
occasional tables,  
each with a circular bevelled  
glass top, on hinged supports  
and stretchers,  
53.5cm diameter  
43.5cm high (2)  
£150 - 200

**Lot 479**

A brass and bamboo  
standard lamp,  
in the style of Tommaso Barbi,  
182cm high  
£400 - 600

**Lot 480**

A Danish teak clock,  
by Dyrland, with an inlaid  
face, brass hands, and a full  
length door, *labelled*,  
47cm wide  
27cm deep  
180cm high  
£250 - 300



479



480



481



482



483



484

**Lot 481**

A teak circular table, designed by Frem Rojle for Hans Olsen, with an extra leaf, *branded*, 106cm diameter, 157cm extended with a set of six chairs (7)  
£600 - 800

**Lot 482**

A pair of 'Bestlite' brass and enamelled lights, with adjustable hinged shades and aluminium mounted brackets, stamped 'Bestlite Rd762006 British Best', 65cm long (2)  
£150 - 200

**Lot 483**

A set of six teak 'Eva' chairs, designed by Niels Koefoed for Koefoed Hornslet, with brown seats, *stamped marks* (6)  
£250 - 350

**Lot 484 §**

A set of six rosewood 'Lis' chairs, designed by Niels Koefoed for Koefoed Hornslet, *stamped marks* (6)  
£600 - 800

A10 CITES Licence no. 576763/26



485

**Lot 485 §**

A rosewood coffee table, with end drawers, 163cm wide 59cm deep 54cm high  
£250 - 350

A10 CITES Licence no. 576763/23

**FURNITURE MADE OF BRAZILIAN ROSEWOOD (DALBERGIA NEGRA)**

To comply with CITES Regulations on post-1947 furniture made of Brazilian Rosewood, all post-war rosewood furniture items have Article 10 certificates. If you are purchasing rosewood furniture for commercial purposes and not solely for your own use, CITES regulations require you to obtain your own certificate. You would need to contact the Animal Health and Veterinary Laboratories Agency ('AHVLA') and, as part of the process of obtaining your document, it is a requirement that you have seen sight of the Sworders' certificate or are aware of its reference number. It is therefore the responsibility of commercial buyers to ensure that they obtain a copy of the appropriate certificate, or the certificate reference number, after purchase from Sworders Fine Art Auctioneers. All certificate numbers are also listed on our website [www.sworder.co.uk](http://www.sworder.co.uk).





486

**Lot 486 S**

A Danish rosewood bureau, with a raised back, a sliding lithographed glass cupboard over a sliding writing surface and three drawers, 95.5cm wide 46.5cm deep 121.5cm high  
£300 - 500

A10 CITES Licence no. 576763/22

**Lot 487**

A PH 3.5 lamp, designed by Poul Henningsen, with a red enamelled shade and two further shades, one cracked, 157cm high  
£400 - 600



487

**Lot 489**

An Italian brass six-branch ceiling light, 1950s, with frosted glass shades  
£200 - 300

**Lot 490**

A pair of Danish tan leather armchairs, with turned teak legs, 75cm wide (2)  
£200 - 300



488



489

**Lot 488**

A set of four Danish teak CH-30 dining chairs, by Hans Wegner for Carl Hansen & Son, branded 'Made in Denmark, Carl Hansen & Son Odense Denmark, Designer Hans J Wegner', 52cm wide 47cm deep 75cm high (4)  
£600 - 800



490



491



492

**Lot 491**  
A Danish oak open bookcase, designed by Børge Mogensen for Karl Andersson, 135cm wide 26cm deep 143cm high  
£200 - 300

**Lot 492 §**  
A set of six rosewood 'Eva' chairs, designed by Niels Koefoed for Koefoed Hornslet, with black vinyl seats, stamped marks (6)  
£400 - 600  
A10 CITES Licence no. 576763/25

**Lot 493**  
A Danish oak veneered open bookcase, with two rows of adjustable shelves, labelled 'Omavn Jun Model Nr 6', 120cm wide 29cm deep 144.5cm high  
£200 - 300



493



494



495

**Lot 494**  
A modernist copper table lamp, with a double light fitting, 77.5cm high  
£150 - 200

**Lot 495**  
A set of ten chrome and perforated X Line stacking chairs, designed by Niels Jørgen Haugesen, 50cm wide seat 41.5cm high 78cm high (10)  
£300 - 500

**Lot 496**  
A Danish teak sideboard, with four sliding panels, centred with an hinged cupboard enclosing a mirrored back and flanked with three drawers, 200cm wide 35cm deep 95cm high  
£150 - 250



496





497

**Lot 497**

A Danish leather settee, by Stouby, with a beech frame, 152cm wide, 72cm deep, 78cm high, £300 - 500

**Lot 498**

A Danish teak cabinet, with six shelves, over a hinged cupboard with eight shelves with brass 'D' shaped handles, 120cm wide, 26cm deep, 133cm high, £150 - 250

**Lot 499**

A pair of Danish aluminium and coloured three-light coiled ceiling sets, in the manner of Louis Weisdorf, with red and purple inner panels, 150cm high overall (2), £150 - 250



499



498



500

**Lot 500**

A Danish brown leather settee, 218cm wide, £400 - 600

**Lot 501**

A desk lamp, 1980s, enamelled and chrome, with a 45 degree swivel, £80 - 120



501

**Lot 502**

A Danish oak chest, designed by Børge Mogensen for Karl Andersson of eight graduated drawers, labelled 'AB Karl Andersson & Söner', on strut supports, 135cm wide, 46cm deep, 84cm high, £350 - 450



502



503



504

**Lot 503**

A 'Lilia' mirror,  
designed by Luciano Frigerio  
66.5cm wide  
106cm high  
£150 - 250

**Lot 504**

A 'Lilia' mirror,  
designed by Luciano Frigerio  
66cm wide  
116cm high  
£150 - 250



505



506



507

**Lot 505**

A Danish teak veneered set of shelves,  
with three rows of adjustable shelves,  
on turned supports,  
120cm wide  
26cm deep  
132.5cm high  
£250 - 350

**Lot 506**

A Danish teak desk,  
the shaped top over three drawers and  
a cupboard, the back with a cupboard  
and a well, *lacking a shelf*,  
139.5cm wide  
70cm deep  
72cm high, and  
a matching desk chair (2)  
£150 - 250

**Lot 507**

A stitched leather armchair and matching  
side table,  
designed by Matteo Grassi,  
chair 70cm wide  
table 61cm wide (2)  
£600 - 800



**Lot 508**

Four 'Carimate' chairs,  
1959, designed by Vico Magistretti for  
Cassina, two white armchairs, one stained red  
single, one plain armchair (4)  
£150 - 200



508

**Lot 509**

A set of six 'Cesca' chairs,  
after a design by Marcel Breuer, each with a  
cane panel and seat, on a chrome cantilever  
support (6)  
£150 - 200



509

**Lot 510 §**

A Merrow Associates chrome and  
rosewood drinks trolley,  
with two glass shelves, on castors,  
73cm wide  
46cm deep  
64cm high  
£350 - 450

**Lot 511 §**

A Merrow Associates chrome and  
rosewood coffee table,  
with a glass top, on castors,  
55cm wide  
57cm deep  
41cm high  
£250 - 300

A10 CITES Licence no. 576634/01



510



511

**Lot 512**

An oak-framed settee,  
with striped upholstery,  
150cm wide  
60cm deep  
76cm high  
£100 - 150



512

**FURNITURE MADE OF BRAZILIAN  
ROSEWOOD (DALBERGIA NEGRA)**

To comply with CITES Regulations on post-1947 furniture made of Brazilian Rosewood, all post-war rosewood furniture items have Article 10 certificates.

If you are purchasing rosewood furniture for commercial purposes and not solely for your own use, CITES regulations require you to obtain your own certificate. You would need to contact the Animal Health and Veterinary Laboratories Agency ('AHVLA') and, as part of the process of obtaining your document, it is a requirement that you have seen sight of the Sworders' certificate or are aware of its reference number.

It is therefore the responsibility of commercial buyers to ensure that they obtain a copy of the appropriate certificate, or the certificate reference number, after purchase from Sworders Fine Art Auctioneers.

All certificate numbers are also listed on our website [www.sworder.co.uk](http://www.sworder.co.uk).



513



514



515



516

**Lot 513**

A Danish fumed oak coffee table, with a tile inset top, 100cm square 40cm high  
£100 - 150

**Lot 514**

A Danish teak cabinet, designed by Hans Wegner, with a beech interior and two rows of adjustable shelves, 100cm wide 34cm deep 109cm high  
£150 - 250

**Lot 515**

A Danish teak cabinet, with sliding doors, raised on turned oak supports, 88.5cm wide 42.5cm deep 80cm high, and a matching cabinet, 70cm wide 43cm deep 80.5cm high (2)  
£150 - 250

**Lot 517**

A Danish oak cupboard, designed by Børge Mogensen for Karl Andersson, with brass handles and hinges, enclosing two rows of four adjustable shelves, raised on a stand, 135cm wide 37.5cm deep 142.5cm high  
£250 - 350

**Lot 518**

A pair of Danish oak model 4521 lounge armchairs, designed by John Mortensen for Magnus Olesen, with corduroy backs and seats, labelled (2)  
£300 - 500

**Lot 516**

A Danish circular teak veneered coffee table, with turned supports, 78cm diameter 43cm high  
£60 - 80



517



518





519



520



521



522



523

**Lot 519**

A Bing & Grøndahl 'Arabian Horse'  
modelled by Calvin Roy Kinstler, numbered '2271',  
26cm long  
£150 - 250

**Lot 520**

A Royal Copenhagen 'Windswept' horse,  
modelled by Lauritz Jensen, numbered '1362', impressed,  
printed and painted marks,  
31cm long  
£200 - 300

**Lot 521**

A Royal Copenhagen Jersey cow,  
modelled by Vivian Jeanne Grut, numbered '4683' and  
printed marks,  
22.5cm long  
£150 - 250

**Lot 522**

A Bing & Grøndahl cow,  
modelled by Lauritz Jensen, numbered '2161'  
and with artist's monogram,  
24cm long  
£200 - 300

**Lot 523**

Royal Copenhagen mandarin ducks,  
modelled by Peter Herold, numbered '1863'  
and with printed marks,  
21cm wide  
£200 - 300



524



525



526



527

**Lot 524**

An Italian hanging ceiling light, the shallow dish base with twelve inset glass panels, fitted with three lights, 95cm diameter 90cm high  
£300 - 500

**Lot 525**

A Danish two-seater settee, with buttoned cushions to the backs and sides, on chrome strut supports, 160cm wide 78cm deep 75cm high  
£300 - 500

**Lot 526**

A pair of contemporary gold painted metal and laminated bookcases, by Jobst Von Sydow, 2003, with shaped ends, a shelf and sliding doors, 90cm wide 45cm deep approximately 116cm high (2)  
£400 - 600

**Lot 527**

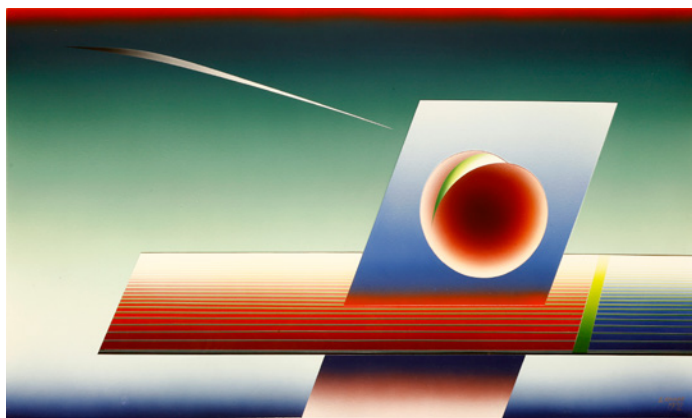
A contemporary painted metal and laminated bookcase, by Jobst Von Sydow, 2003, with shaped ends, a shelf and sliding doors, 197cm wide 45cm deep 110cm high  
£400 - 600

**Lot 528**

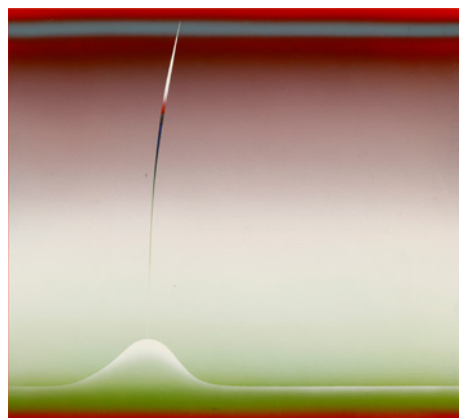
\*Stefan Knapp (1921-1990)  
UNTITLED  
Signed and dated 1992, enamel on steel panel  
162 x 92cm  
£400 - 600

**Lot 529**

\*Stefan Knapp (1921-1996)  
UNTITLED  
Enamel on steel panel  
91 x 91cm  
£300 - 500



528



529





530

**Lot 530**

\*Tom Merrifield (b.1932),  
a ballerina, signed with initials 'TM 6/8',  
45cm high  
£300 - 500

**Lot 531**

\*Enzo Plazzotta (1921-1981),  
'Study for Movement', patinated bronze, numbered 6/9,  
'Foundry Fonderia Luigi Tommasi Pietrasanta',  
68cm high  
£800 - 1,200



531

**Lot 532**

\*Enzo Plazzotta (Italian 1921-1981),  
'Nicki Howorth II', patinated bronze, numbered 9/9,  
66cm high  
£800 - 1,200



532



533

**Lot 533**

An Italian glass five-light ceiling light,  
in the style of Max Ingrand for Fontana Arte,  
170cm high  
£300 - 500

**Lot 534**

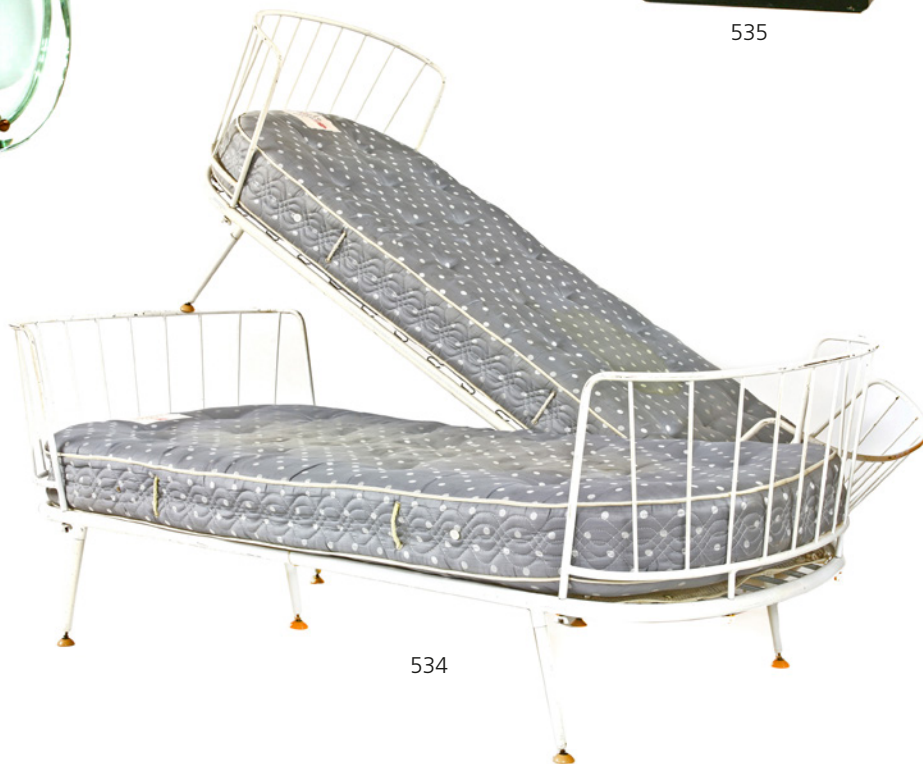
A pair of painted metal daybeds,  
in the style of Ernest Race, the button castors  
labelled 'Armstrong Cork Company',  
200cm wide  
90cm deep  
76cm high (2)  
£300 - 500

**Lot 535**

A modernist sculpture,  
modelled as a female torso, on a plinth,  
57cm high  
£100 - 150



535



534





536

**Lot 536**

Man Ray (American, 1890-1976)  
CADEAU, 1921/1974  
numbered 2465/5000, with  
original certificate, plastic card  
and polystyrene case,  
16.5cm high  
£1,000 - 1,500



537

**Lot 539**

A pair of table lamps,  
designed by Angelo Lelli for  
Arredoluce, with a silvered mount,  
an hinged light with a rotary switch  
to the base, *stamped 'MADE IN  
ITALY, ARREDOLUCE, MONZA'*,  
25cm high (2)  
£250 - 350

**Lot 537**

An Italian chandelier,  
1950s,  
with four uplighters  
£250 - 350

**Lot 538**

A Falcon-type armchair,  
with a red leather seat and arms,  
83cm wide  
£200 - 300



538

**Lot 540**

An Italian chrome-framed  
dining table,  
1960s, in the style of Romeo Riga,  
with a plate glass top,  
200cm wide  
100cm deep  
72cm high  
£400 - 600



539



540



541



542



543

**Lot 541**

A modern wool rug,  
of oval form, *labelled*,  
270 x 180cm  
£150 - 250

**Lot 542**

A Danish brown leather armchair,  
75cm wide  
£200 - 300

**Lot 543**

An octagonal marble top coffee table,  
on a brass stand,  
157.5cm diameter  
41cm high  
£300 - 500

Reputedly the balusters were removed from the Old Bailey, and Charlie Wearn of Newport, Essex, a well known architectural salvage dealer, then created this table in the 1960s.

**Lot 544**

A marble group of a mother and child,  
81cm high  
£600 - 800

**Lot 545**

A granite figure on a plinth,  
151cm high  
£800 - 1,200



544



545





546



547



548



549



550



551

**Lot 546**

A Danish brown leather two-seater settee,  
by Stouby,  
145cm wide  
80cm deep  
70cm high  
£300 - 500

**Lot 547 §**

A Gordon Russell rosewood conference  
table,  
designed by Martin Hall, the circular top over  
a cruciform stand,  
198cm diameter  
73.5cm high  
£300 - 500

A10 CITES Licence no. 576798/03

**Lot 548 §**

A Gordon Russell rosewood sideboard,  
designed by Martin Hall,  
220cm wide  
52cm deep  
88cm high  
£300 - 500

A10 CITES Licence no. 576798/01

**Lot 549 §**

A Gordon Russell rosewood sideboard,  
designed by Martin Hall,  
220cm wide  
52cm deep  
88cm high  
£300 - 500

A10 CITES Licence no. 576798/02

**Lot 550**

A Danish two-seater settee,  
with stained supports,  
150cm wide  
78cm deep  
75cm high  
£200 - 300

**Lot 551 §**

A rosewood console,  
c.1970, the plain top over three modular units  
comprising drawers and cupboards, labelled  
'N H Chapman & Co. Ltd. Siesta Newcastle,  
Alnwick and Carlisle',  
270cm wide  
53cm deep  
75cm high  
£1,500 - 1,800

A10 CITES Licence no. 576755/01

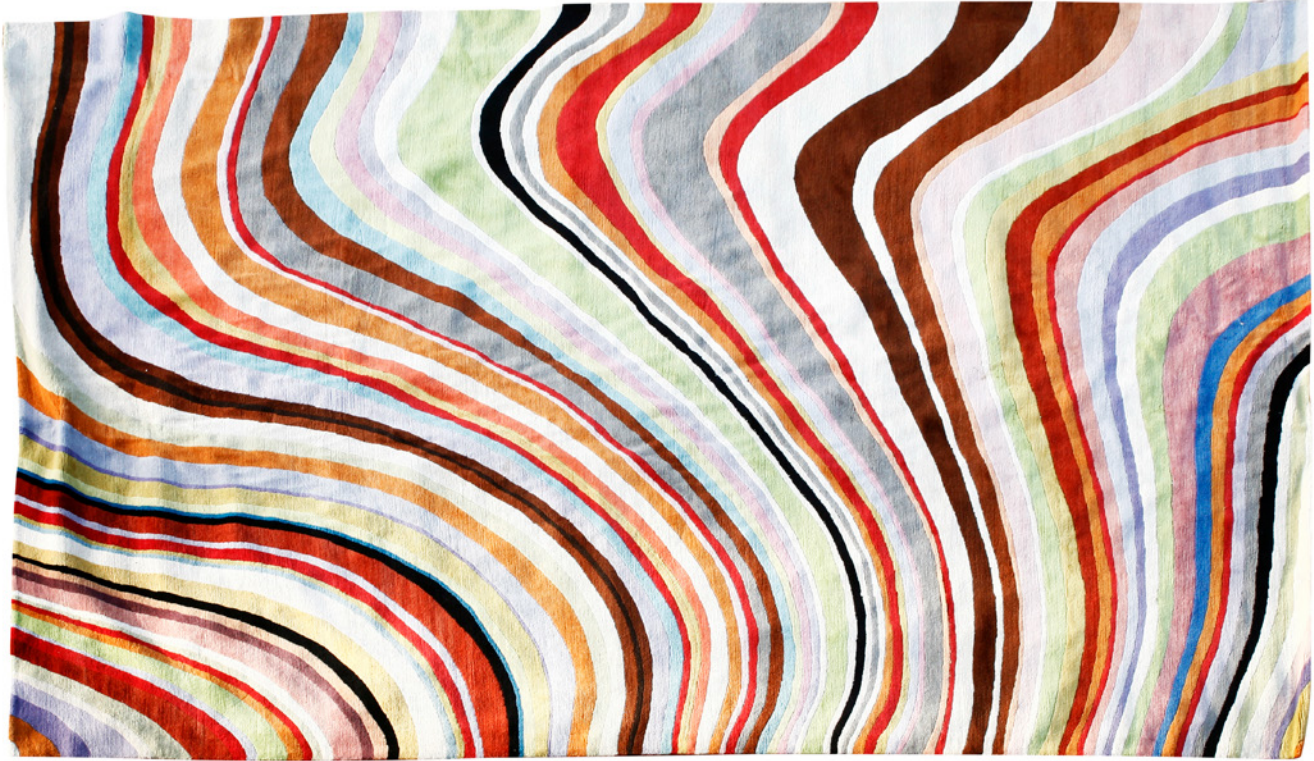
**FURNITURE MADE OF BRAZILIAN ROSEWOOD (DALBERGIA NEGRA)**

To comply with CITES Regulations on post-1947 furniture made of Brazilian Rosewood, all post-war rosewood furniture items have Article 10 certificates.

If you are purchasing rosewood furniture for commercial purposes and not solely for your own use, CITES regulations require you to obtain your own certificate. You would need to contact the Animal Health and Veterinary Laboratories Agency ('AHVLA') and, as part of the process of obtaining your document, it is a requirement that you have seen sight of the Sworders' certificate or are aware of its reference number.

It is therefore the responsibility of commercial buyers to ensure that they obtain a copy of the appropriate certificate, or the certificate reference number, after purchase from Sworders Fine Art Auctioneers.

All certificate numbers are also listed on our website [www.sworders.co.uk](http://www.sworders.co.uk).



552



553

**Lot 552**

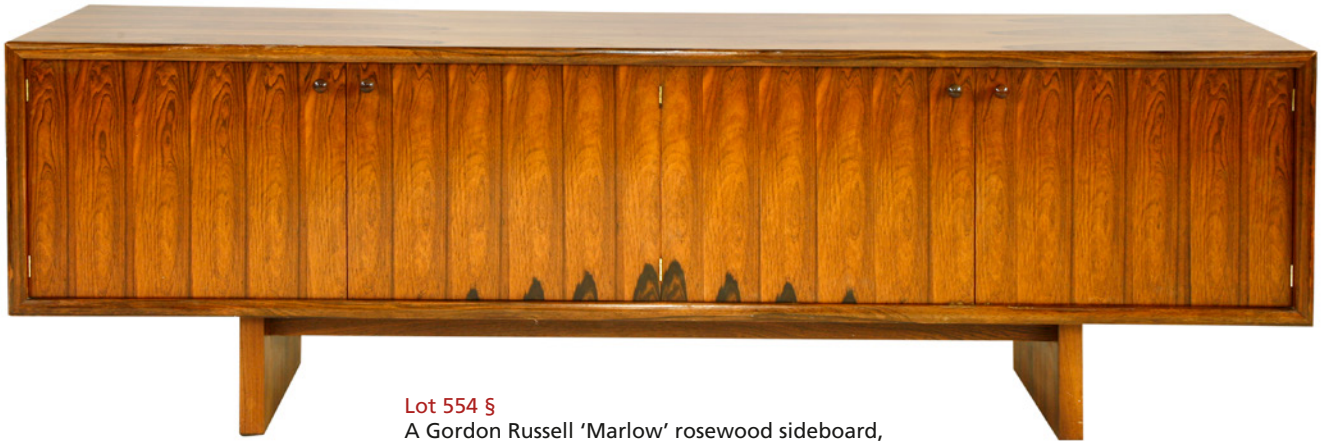
A contemporary rug,  
designed by Paul Smith for the  
Rug Company,  
265 x 280cm  
£2,000 - 4,000

**Lot 553**

A Merrow Associates rosewood  
circular dining table,  
1970s, centred with a revolving  
lazy Susan,  
138cm diameter  
73cm high  
£1,000 - 1,500

A10 CITES Licence no. 576755/02



**Lot 554 §**

A Gordon Russell 'Marlow' rosewood sideboard,  
c.1975, designed by Martin Hall, with a maple interior,  
214cm wide  
46cm deep  
71.5cm high  
£1,000 - 1,500

A10 CITES Licence no. 576755/04



555

**Lot 555**

\*Harry Kernoff (1900-1974)  
EXTENSIONS IN TIME AND SPACE  
Signed, watercolour  
27.5 x 37.5cm  
£300 - 500

**Lot 556**

A John Galliano silk bias cut shoestring strap dress,  
1990s  
£120 - 150

**Lot 557**

A pair of Swedish sterling silver candlesticks,  
maker's mark C G Hallberg, 1960,  
stamped with facsimile signature,  
11cm high (2)  
£300 - 500

**Lot 558**

A Mappin and Webb silver-plated three-piece tea set,  
designed by Eric Clements, the teapot with a turned wood  
handle and finial, stamped 'W 29945' and with facsimile  
signature,  
teapot 15cm high (3)  
£100 - 150



556



557



558



559



560



562



561



563

**Lot 559**

A Metropolitan-Vickers desk fan,  
44cm high  
£100 - 150

**Lot 560**

A chrome and enamelled clamp  
lamp,  
42cm high approximately  
£100 - 150

**Lot 561 §**

A Merrow Associates chrome and  
rosewood drinks trolley,  
with two glass shelves, on castors,  
73.5cm wide  
45cm deep  
64cm high  
£250 - 350

A10 CITES Licence no. 576651/01

**Lot 562**

A pair of grey upholstered  
armchairs,  
1950s, after a design by Paolo Buffa,  
with white piping, on ebonised  
supports,  
75cm wide  
96cm high  
seat 47cm high (2)  
£600 - 800

**Lot 563**

A chrome and laminated drinks  
trolley,  
1970s, raised on castors,  
64cm wide  
50cm deep  
65cm high  
£100 - 150





564

**Lot 564 §**

A rosewood Model 509 desk,  
designed by Arne Vodder, with a sideboard and desk,  
204cm wide  
90cm deep  
72cm high  
£1,000 - 1,500

A10 CITES Licence no. 576763/09

**Lot 565**

An Italian pendant light,  
in the style of FontanaArte,  
46cm high  
£150 - 250

**Lot 566**

A massive 'Signs of the Zodiac' brass  
and copper clock dial,  
the outer ring with Arabic numerals,  
the middle ring with twelve embossed  
and enamelled panels depicting the  
signs of the zodiac, the central ring  
with a starburst design, centred with an  
electric clock movement,  
171cm diameter  
£1,000 - 1,500



565



566



567

**Lot 567 §**

A set of four rosewood Model 42 dining chairs, designed by Kai Kristiansen, with leather backs and seats (4)  
£300 - 500

A10 CITES Licence no. 576763/24



568



569



570



571

**Lot 568 §**

A collection of rosewood Cado 'Royale' wall units, with shelves and cupboards (qty.)  
£400 - 600

A10 CITES Licence no. 576763/21

**Lot 569**

Three teak circular tables, designed by Hans C Andersen, with dished tops on tripod stands, 36cm diameter 45cm high (3)  
£300 - 500

**Lot 570**

A Danish brown leather three-seater settee, by Stouby, 205cm wide 80cm deep 70cm high  
£400 - 600

**Lot 571**

Two Val St Lambert lamp bases, each with purple and pink tint, one with an old label, 32 and 37cm (2)  
£150 - 250

**FURNITURE MADE OF BRAZILIAN ROSEWOOD (DALBERGIA NEGRA)**

To comply with CITES Regulations on post-1947 furniture made of Brazilian Rosewood, all post-war rosewood furniture items have Article 10 certificates.

If you are purchasing rosewood furniture for commercial purposes and not solely for your own use, CITES regulations require you to obtain your own certificate. You would need to contact the Animal Health and Veterinary Laboratories Agency ('AHVLA') and, as part of the process of obtaining your document, it is a requirement that you have seen sight of the Sworders' certificate or are aware of its reference number.

It is therefore the responsibility of commercial buyers to ensure that they obtain a copy of the appropriate certificate, or the certificate reference number, after purchase from Sworders Fine Art Auctioneers.

All certificate numbers are also listed on our website [www.sworder.co.uk](http://www.sworder.co.uk).





572



574



573



575

**Lot 572**

An oak plank table or bench,  
raised on strut supports,  
301cm wide  
70cm deep approximately  
56cm high  
£250 - 350

**Lot 573**

A Danish oak veneered bookcase,  
designed by Børge Mogensen for Karl  
Andersson, with two rows of adjustable  
shelves, *branded*,  
108cm wide  
30.5cm deep  
154.5cm high  
£150 - 250

**Lot 574**

A pair of oak veneered cupboards,  
designed by Børge Mogensen for Karl  
Andersson, each with sliding doors,  
enclosing shelves, slides or divisions, on  
turned oak supports, *labelled 'AB Karl  
Andersson & Söner'*,  
134.5cm wide  
46cm deep  
84.5cm high (2)  
£300 - 500



576

**Lot 575**

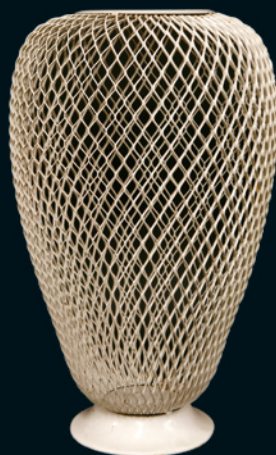
A pair of teak veneered 'China' bookshelves,  
designed by Børge Mogensen, each with two rows  
of adjustable shelves, *branded*, on oak supports,  
122cm wide  
26cm deep  
159cm high (2)  
£350 - 450

**Lot 576**

A Danish two-seater tan leather  
settee,  
by Mogens Hansen,  
198cm wide  
£250 - 350



577



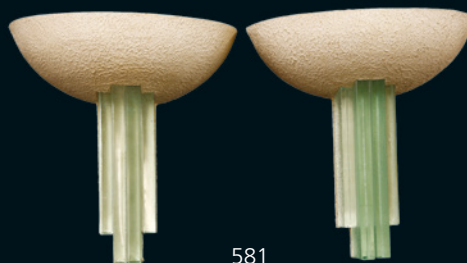
578



579



580



581



582

**Lot 577**  
A three-division painted stand, after a design by Osvaldo Borsani, with three glass divisions, on a shaped tripod stand, 40cm diameter, 45.5cm high  
£250 - 350

**Lot 578**  
A French pierced vase, in the style of Matégot, 41.5cm high  
£100 - 150

**Lot 579**  
An eggshell side table, 1970s, 51cm wide, 33cm deep, 56.5cm high  
£100 - 150

**Lot 580**  
A pair of Italian wall lights, with unpainted metal shades, with four glass panels, 30cm wide, 33cm high (2)  
£250 - 350

**Lot 581**  
A pair of Italian wall lights, the scumbled cream shade fitted with four glass panels, 29cm wide, 31cm high (2)  
£250 - 350

**Lot 582**  
A marble sculpture, of oval form, inscribed to the reverse '82 1/100', 53cm high  
£200 - 300

**Lot 583**  
A collection of Boda Buffa stainless steel and cream plastic cutlery (qty.)  
£80 - 120

**Lot 584**  
A Knubbling table lamp, designed by Anders Pehrson for Ateljé Lyktan, 55cm high  
£150 - 250



583



584



**Lot 585**

A Daum clear glass lamp base and a Sèvres lamp base,  
28 and 42cm (2)  
£150 - 200

**Lot 586**

An Italian brass and lucite table lamp,  
1960s, with two bulbs,  
46cm high  
£100 - 150

**Lot 587**

A pair of white upholstered armchairs,  
after a design by Gio Ponti (2)  
£1,500 - 2,000

**Lot 588**

A chrome thirteen-bulb ceiling light,  
modelled as a jet intake, with two Bakelite  
switches, stamped 'System Kerra',  
51.5cm diameter  
£200 - 300

**Lot 589**

An Italian starburst wall mirror,  
centred with a convex mirror,  
82cm diameter overall  
£150 - 200

**Lot 590**

A pair of Italian brass and enamelled  
wall lights,  
46cm wide (2)  
£100 - 150

**Lot 591**

An Italian glass centrepiece,  
of rectangular form, with a mirrored base  
centred with a sunken frosted centre,  
labelled 'Galvoglas Brusotti',  
41.5cm wide  
33cm deep  
£100 - 150

**Lot 592**

A pair of resin moulded table lamps,  
with enamel details, each with two lights (2)  
£200 - 300

**Lot 593**

An Italian circular hall mirror,  
with brass and painted frame,  
77cm diameter  
£100 - 150



585

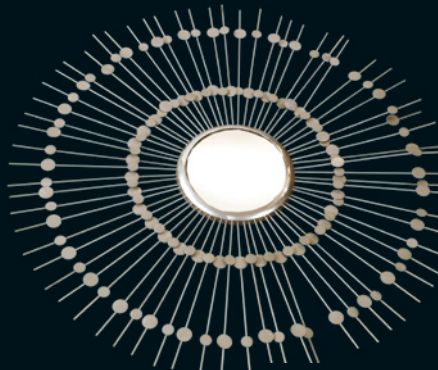
586



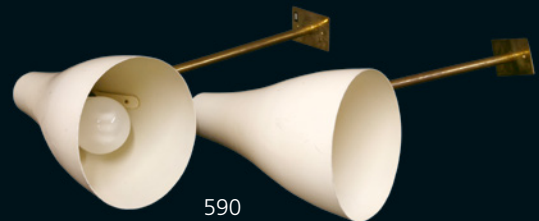
587



588



589



590



591



592



593



594

**Lot 594**

An Italian chrome, black enamelled steel, opaline glass and marble floor lamp, in the style of Stilnovi, the partially ebonised stem supporting a spiral of six opaline globular shades, the circular, veined, grey marble base with a light switch, 178cm high  
£300 - 500

**Lot 595**

A contemporary bronze sculpture of a leopard, 114cm long nose to tail  
£1,000 - 1,500



595



596

**Lot 596**

\*Wharton Lang (1925-2014), a relief carved mermaid, *signed*, 44cm wide 74cm high, framed  
£100 - 200

Purchased from the artist in St Ives. Lang and his father were born in Oberammergau in Germany and settled in St Ives in 1949.



597

**Lot 597**

A Pierre Cardin Art Deco-style table and four chairs, 1970s, all upholstered in carpet cut with palmette designs, table 119cm diameter 72cm high  
£400 - 600





598



599



600



601



602



603

**Lot 598**

An LC3 sofa,  
originally designed by Le Corbusier for  
Cassina, with dark burgundy leather seats,  
108cm wide  
70cm deep  
68cm high  
£1,500 - 2,500

**Lot 599**

A 'Cricket' chair,  
designed by Andries Van Onck and  
Kazuma Yamaguchi, 1983, for Magis Italy  
£100 - 150

**Lot 600**

A pair of 'Wendy Wright' chairs,  
designed by Philippe Starck for Disform in  
1986 (2)  
£200 - 300

**Lot 601**

A set of four 'Orly' orange moulded plastic  
and calamander chairs,  
designed by O F Pollak for Sulo, raised on box  
stands,  
46cm wide  
86cm high  
seat 49cm high (4)  
£250 - 350

**Lot 602**

A contemporary purple two-drawer chest,  
on a chrome stand, labelled 'Talisman' to the  
inside of drawer,  
89cm wide  
57cm deep  
63.5cm high  
£200 - 300

**Lot 603**

A pair of 'Les Arcs' chairs,  
after Charlotte Perriand, with leather slung  
seats (2)  
£200 - 300



604



605

**Lot 604**

A Jaeger-LeCoultre 'Atmos' clock, calibre 526-5, in a lacquered brass case, with a circular dial, serial number '485458', in the original box with guarantee and instructions, 22.5cm high  
£500 - 700

**Lot 605**

An LC2 armchair, after a design by Le Corbusier, with white leather upholstery, 76cm wide 70cm deep 69cm high seat 42cm high  
£250 - 350



606

**Lot 606 \$**

A rosewood sideboard, designed by Arne Vodder, with two sliding cupboards, on a turned stand, 126cm wide 49cm deep 80.5cm high  
£700 - 900

A10 CITES Licence no. 576763/15



607

**Lot 608**

A teak lounge and ottoman, designed by Arne Vodder, with upholstered seats and back, labelled 'France and Son' (2)  
£400 - 600

**Lot 607 \$**

A rosewood sideboard, designed by Arne Vodder, with seven drawers to the side and two sliding cupboards, on a turned stand, 183cm wide 49.5cm deep 115.5cm high  
£800 - 1,200

A10 CITES Licence no. 576763/14

**Lot 609 \$**

A rosewood lounge and ottoman, designed by Arne Vodder, with tan leather seats and back, labelled 'France and Son' (2)  
£1,000 - 1,500

A10 CITES Licence no. 576763/12



608



609





610



611



612



613

**Lot 610 \$**

A rosewood desk, designed by Arne Vodder, with an arrangement of drawers either side of a well, with shelves to the back, 145cm wide 75cm deep 72cm high  
£600 - 800

A10 CITES Licence no. 576763/10

**Lot 611**

A console table, designed by Robert Heritage, with a leatherette top over drawers, raised on aluminium supports, 183.5cm wide 46cm deep 76cm high  
£400 - 600

**Lot 612 \$**

A rosewood writing table, designed by Robert Heritage, with an arrangement of drawers and shelves over a writing surface, with two drawers below, 84cm wide 48.5cm deep 91cm high  
£400 - 600

A10 CITES Licence no. 576763/06

**Lot 613 \$**

A rosewood sideboard, designed by Robert Heritage, wall mounted, with sliding cupboards 143cm wide 46cm deep 46cm high  
£300 - 500

A10 CITES Licence no. 576763/05

**Lot 614 \$**

An 'Executive' rosewood and leather desk chair, designed by Arne Vodder for Sibast, with a revolving stand on castors, 72cm wide 105cm high, seat 50cm high  
£600 - 800

A10 CITES Licence no. 576763/11

**Lot 615 \$**

A rosewood sideboard, designed by Robert Heritage, wall mounted, with an arrangement of four drawers, with brass recessed handles and two sliding cupboards, 214cm wide 46cm deep 46cm high  
£800 - 1,200

A10 CITES Licence no. 576763/04



614



615



616

**Lot 616 S**

A set of six rosewood dining chairs, designed by A J Milne for Mines and West in 1947 and retailed by Heal's, upholstered in grey (6)  
£4,000 - 6,000

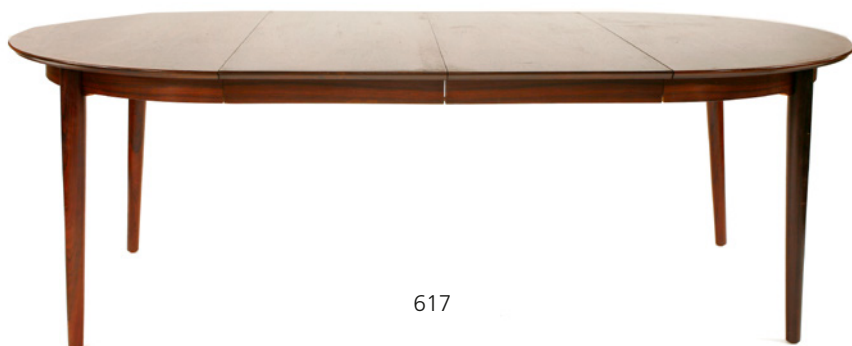
For a similar example, see Charlotte & Peter Fiell, '1000 Chairs', Taschen, p.264.

A10 CITES Licence no. 576763/03

**Lot 617 S**

A rosewood circular table, designed by Kai Kristiansen, with an extra leaf, 123cm diameter extended 174cm long  
72.5cm high  
£500 - 700

A10 CITES Licence no. 576763/02



617

**Lot 618**

A set of four Model 42 dining chairs, designed by Kai Kristiansen, with beige and brown latticed seats and back (4)  
£300 - 500

**Lot 619**

A pair of Model 42 dining chairs, designed by Kai Kristiansen, with purple upholstery (2)  
£150 - 250



618



619

**FURNITURE MADE OF BRAZILIAN ROSEWOOD (DALBERGIA NEGRA)**

To comply with CITES Regulations on post-1947 furniture made of Brazilian Rosewood, all post-war rosewood furniture items have Article 10 certificates. If you are purchasing rosewood furniture for commercial purposes and not solely for your own use, CITES regulations require you to obtain your own certificate. You would need to contact the Animal Health and Veterinary Laboratories Agency ('AHVLA') and, as part of the process of obtaining your document, it is a requirement that you have seen sight of the Sworders' certificate or are aware of its reference number. It is therefore the responsibility of commercial buyers to ensure that they obtain a copy of the appropriate certificate, or the certificate reference number, after purchase from Sworders Fine Art Auctioneers. All certificate numbers are also listed on our website [www.sworder.co.uk](http://www.sworder.co.uk).





620



623

**Lot 620**  
French School (20th century)  
SAILING BOATS  
Oil on canvas  
200 x 205cm  
£250 - 350

**Lot 621**  
Six metal shades,  
green painted with cream interiors,  
40.5cm diameter  
30cm high (6)  
£150 - 200

**Lot 622**  
A patinated bronze coffee table,  
the rectangular top with a rough cut  
edge, raised on a metal faux wood  
branch stand,  
112cm wide  
61cm deep  
42cm high  
£400 - 600



621



622



624

**Lot 623**  
A Pragoticon square wall clock,  
with red hands, now with a modern battery movement,  
43.5cm square  
£100 - 150

**Lot 624**  
A Piero Fornasetti porcelain inkwell and  
penholder,  
each of cylindrical shape, decorated with classical  
verse on a gold lustre ground, *printed marks*,  
6.7cm high (2)  
£100 - 150

**Lot 625**  
A Rosenthal Studio-line sculptural vase,  
designed by Martin Freyer, *printed marks*,  
52.5cm high  
£300 - 500

**Lot 626**  
A Pye 'Stereophonic Projection System',  
in a mahogany case, with instructions and  
guarantee, bought 9 May 1967,  
56.5cm wide  
£100 - 150



625



626



627

**Lot 627**

\*Michael Tyzack (1933-2007)  
DRAWING No.2, 1990  
Signed l.r., and dated 90, graphite  
and acrylic on paper,  
63 x 64cm, framed  
£300 - 500



628

**Lot 628**

An Italian pottery and leather-mounted jar  
and cover,  
a table lamp,  
with a cream shade, and  
a brass table lamp (4)  
£100 - 150



629

**Lot 629**

\*Guido Gambone (1909-1969),  
a stoneware two-tone vase, *signed*  
*'Gambone Italy'*,  
32.8cm wide  
£200 - 300



630

**Lot 630**

A De Sede DS220 white leather chair,  
with a pull-out footrest, raised on  
a revolving stand,  
105cm high  
£300 - 500



631

**Lot 631**

A chrome cheval mirror,  
53cm wide  
139.5cm high  
£250 - 350

**Lot 632**

A Cherner chair,  
designed by Norman Cherner in 1958  
£250 - 350

**Lot 633**

A brushed chrome cabinet,  
by Pierre Cardin, with three cupboards,  
142cm wide  
49.5cm deep  
77cm high  
£150 - 300



632



633





634

**Lot 634**

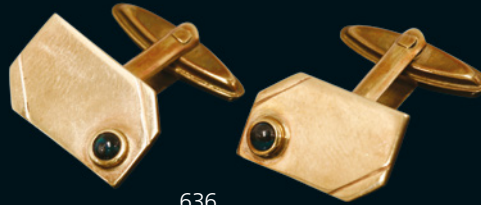
An Italian circular wall mirror,  
with a painted outer ring and  
brass mounts,  
59.5cm diameter  
£100 - 150



635

**Lot 635**

A chrome wall light,  
with a white glass sleeve shade,  
33cm deep  
60.5cm high  
£150 - 200



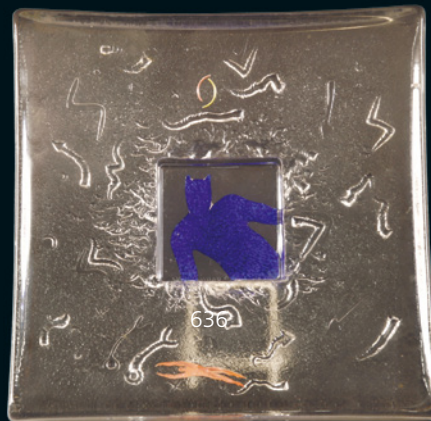
636

**Lot 636**

A pair of 9ct gold single  
stone cabochon swivel back  
cufflinks,  
7.78g (2)  
£60 - 80

**Lot 637**

A Swedish shallow glass slab  
ashtray,  
the centre with a blue figure,  
the underside mounted with  
objects, inscribed '67',  
22cm wide  
£100 - 150



637

**Lot 638**

A Heinrich porcelain  
sculptural vase,  
with a printed mark,  
59cm high  
£200 - 400



638



640

**Lot 639**

A Wedgwood monkey group, by John Skeaping, in a cream glaze, impressed mark and 'J Skeaping', 17.5cm high  
£100 - 150

**Lot 640**

A pair of Italian three-light hanging ceiling lights, each with amber crackled glass shades, 105cm high  
20cm diameter shades (2)  
£250 - 350

**Lot 641**

A Murano glass buffalo, attributed to Roberto Dona, c.1970, signed 'Cenedese Nason', 42cm wide  
13cm deep  
25cm high  
£400 - 600



639



641

**Lot 642**

A Rosenthal Form 2000 coffee set for four, designed by Raymond Loewy in the 'Columbine' pattern designed by Lucienne Day, comprising: four cups and saucers, coffee pot and cover, sugar bowl, printed marks (17)  
£200 - 300

**Lot 643**

An 'AJ Royal' pendant lamp, designed by Arne Jacobsen for Louis Poulsen, 51cm diameter  
£150 - 250

**Lot 644**

A Givenchy chrome breastplate pendant, 1960s, 36cm long, and matching earrings, 9cm long (3)  
£100 - 150



642



643



644





645

**Lot 645**  
A Stilnovo standard lamp,  
with a white glass tapering  
cylindrical shade on a lacquered  
brass tripod stand,  
177cm high  
£200 - 400



646

**Lot 646**  
A chrome standard lamp,  
with three articulated positions  
and two adjustable blocks,  
210cm high  
£300 - 500

**Lot 647**  
An 'Hello There' chair,  
designed by Jeremy Harvey for  
Artifort, powder-coated in white  
£150 - 250



647

**Lot 648**  
A lucite desk chair,  
with a white vinyl seat, on castors,  
58cm wide  
£150 - 250



648



649

**Lot 649**  
A plaster figure of a lady seated  
on a chair,  
147cm high  
£200 - 400



650

**Lot 650**  
A five-tier lucite stand,  
with bevelled panels, *lacking glass shelves*,  
91cm wide  
38cm deep  
182.5cm high  
£300 - 500



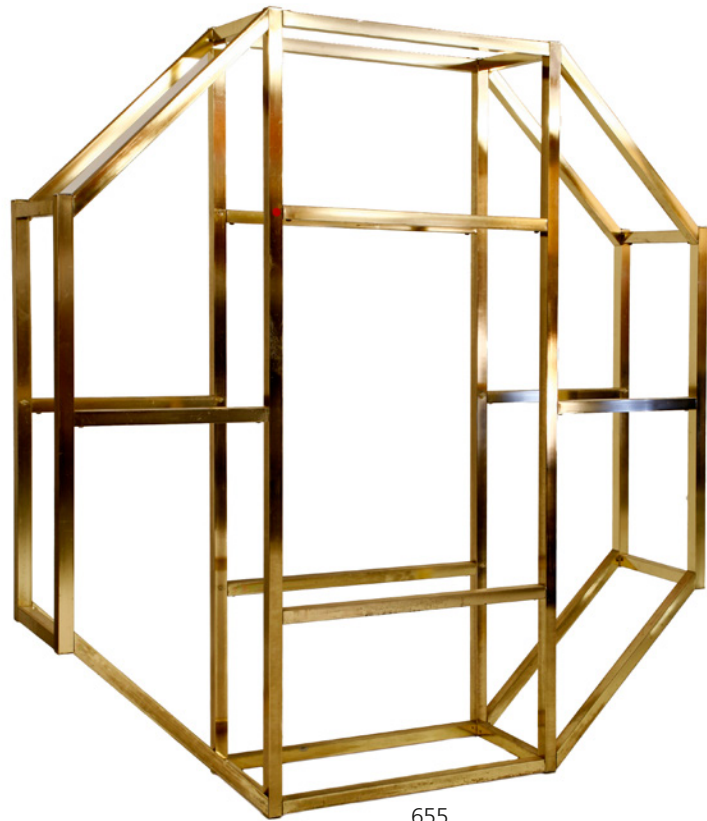
651



652



653



655



654

**Lot 651**  
An Italian five-branch ceiling light,  
56cm diameter  
72cm high  
£200 - 300

**Lot 652**  
A bolt of 'Gaiety' fabric,  
designed in 1971 by  
David Bartle for Heal's Fabrics Ltd.,  
screenprinted cotton,  
and 'Caprice' fabric (qty.)  
£200 - 300

**Lot 653**  
A pair of boots in concrete,  
25cm wide  
25cm deep  
26cm high  
£100 - 150

**Lot 654**  
A contemporary bevelled  
wall mirror,  
153.5cm wide  
102cm high  
£250 - 350

**Lot 655**  
A set of tubular brass  
octagonal shelves,  
*lacking glass shelves*,  
170cm wide  
34cm deep  
184cm high  
£300 - 500



**Lot 656 S**

A rosewood lounge and ottoman, designed by Arne Vodder, with red leather seats and back, labelled 'France and Son' (2)  
£1,500 - 2,000

A10 CITES Licence no. 576763/13

**Lot 657**

A tree table, 1950s, raised on ebonised supports with brass caps, 117cm wide 40cm deep 52cm high  
£100 - 150

**Lot 658**

A pair of Swedish beech side chairs, with vertical splats and reupholstered seats, branded 'Original Seffle', 48cm wide 92cm high seat 44cm high (2)  
£100 - 150

**Lot 659**

A Jaeger-LeCoultre 'Atmos' clock, calibre 528-8, in a lacquered brass case, with a square dial, serial number '416463', 23.5cm high, unboxed  
£400 - 600

**Lot 660**

\*Aldo Calo (1910-1983), a carved volcanic white stone sculpture, 1950s, inscribed 'A CALA 57 ROMA', 52cm wide 18cm deep 56.5cm high  
£400 - 600

**Lot 661**

A painted artist's mannequin, in a glazed case, 52.5cm wide 62.5cm high  
£150 - 200



656



657



658



659



660



661



662



663

**Lot 662**

A pair of Italian lights,  
with chrome ends with routed details to the  
shades,  
73cm long  
13cm deep  
13.5cm high (2)  
£200 - 400

**Lot 663**

A 'Norman' mirror,  
designed by Luciano Frigerio in 1970, with a  
central mirror, framed with stylised pilasters,  
70.5cm wide  
70cm high  
£150 - 200



664

**Lot 664**

An Olivetti Synthesis desk,  
designed by Ettore Sottsass, with a burgundy  
vinyl top, with canted corners and three  
drawers,  
130.5cm wide  
70.5cm deep  
76.5cm high  
£300 - 500



665

**Lot 665**

An Italian brass coffee table,  
162cm wide  
63cm deep  
49cm high  
£250 - 350

**Lot 666**

An Italian brass and enamelled wall lamp,  
with an hinged bracket, a rise/fall weight,  
shade 49cm diameter  
£250 - 350



666

**Lot 667**

A pair of Italian upholstered armchairs,  
83cm wide  
seat 39cm high  
78cm high (2)  
£250 - 350

**Lot 668**

A pair of Italian 'Arenzano' brass table  
lamps,  
designed by Ignazio Gardella for Azucena,  
each with opaline glass shades, with three  
light fittings,  
34cm high (2)  
£200 - 300



668



667





669



670



671



672

**Lot 669**

A teak wall mirror,  
59cm wide  
130.5cm high  
£100 - 150

**Lot 670**

A massive trunk table,  
165cm wide  
43cm high  
£300 - 500

**Lot 671**

A Danish three-seater settee,  
designed by Okamura and  
Erik Marquardsen for Skipper,  
198cm wide  
76cm deep  
78cm high  
£300 - 500

**Lot 672**

An Italian walnut-framed mirror,  
with silvered and gilt details,  
110cm high  
83cm wide  
£200 - 300

**Lot 673**

A Danish armchair,  
on a revolving stand,  
75cm wide  
91.5cm  
£100 - 150



673



674



675



676

**Lot 674**

An Italian chrome pendant light, attributed to Gaetano Sciolari, c.1970, the rectangular stem supporting a pierced box shade enclosing four lights, 60cm wide 26cm deep 103cm high £150 - 200

The light was part of Gaetano Sciolari's 'Lightoliers' cubic series.

**Lot 675**

Mark Brazier-Jones (b.1956), a 'San Demas' aluminium armchair, with a faux leopard print back and seat, signed, dated 2010 and numbered '88/100', 73cm wide 80cm high seat 50cm high £2,000 - 4,000

Mark Brazier-Jones is a master craftsman who was born in New Zealand and works near Buntingford in Hertfordshire. His work is collected worldwide and is found in many museum collections in London and New York.

**Lot 676**

Mark Brazier-Jones (b.1956) an 'Anemone' coffee table, signed and dated 2010, 120cm diameter £800 - 1,200

**Lot 677**

\*Mark Brazier-Jones (b.1956) an 'Elizabeth' console table, with a shaped golden glory marble top, on an aluminum stand, signed and dated 2010, 123cm wide 36cm deep 88.5cm high £3,000 - 5,000



677





678



679



680



681

**Lot 678**  
A pair of contemporary upholstered side chairs (2)  
£250 - 450

**Lot 679**  
A De Sede DS 220 red leather armchair, with a pull-out footrest, raised on a revolving stand, and a glass table to the side, 105cm high  
£300 - 500

**Lot 680**  
A Danish red leather armchair, by Mogens Hansen, 76cm wide  
£150 - 250

**Lot 681**  
A Mastercraft burrwood cabinet, 122.5cm wide 34cm deep 74.5cm high  
£400 - 600

**Lot 682**  
Two 'Toga' chairs, designed by Sergio Mazza for Artemide, in red, 80cm wide 80cm deep 64cm high (2)  
£400 - 600



682



683

**Lot 683**

\*Evelyn Pottie (b.1945)  
BROOMHILL;  
PINK GRANITE;  
CLARA  
Three screenprints, signed and inscribed  
with tiles in pencil, variously numbered  
largest 39 x 63cm (3)  
£150 - 250



684

**Lot 684**

A 'David Hockney at Andre Emmerich'  
exhibition poster, May 1973,  
colour lithograph,  
82 x 63cm, framed  
£100 - 150

**Lot 685**

\*Olwen Jones (b.1945)  
'BUTTERFLY VISIT'  
Signed, watercolour  
58.5 x 44cm  
£400 - 600



685

**Lot 686**

\*William Littlejohn (1929-2006)  
'FISH, MIRROR AND SEAGULL'  
Lithograph, signed in pencil and numbered  
47/50, bought from Curwen Gallery  
103 x 40.5cm  
£150 - 200

**Lot 687**

\*Mary Fedden (1915-2012)  
STILL LIFE  
Lithograph, signed in pencil and numbered  
79/250  
56 x 40cm  
£100 - 150

**Lot 688**

\*Alistair Grant (1925-1997)  
'PIGEON RACING'  
Lithograph, inspired by Guinness Book of  
Records print, 1962  
51 x 38cm  
£100 - 150

**Lot 689**

\*Leonard Rosoman RA (1913-2012)  
LOOKING THROUGH A WINDOW  
Lithograph, signed in pencil and numbered  
64/160  
73 x 54cm  
£100 - 150



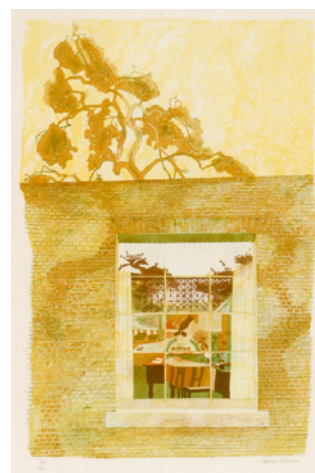
686



687



688



689





690



691

**Lot 690**

An American burr maple and ebonised window seat, with a covered seat, 153cm wide 57cm deep 50cm high £150 - 200

**Lot 691**

A Danish two-seater tan leather settee, by Mogens Hansen, 154cm wide 80cm deep 78cm high £250 - 350



692

**Lot 692**

A Danish rosewood music low cabinet, by Omann Jun, *labelled*, with two deep drawers, over two shallow drawers, 120cm wide 43.5cm deep 54cm high £350 - 450

A10 CITES Licence no. 576628/01

**Lot 693**

A Merrow Associates rosewood and chrome desk, with a single drawer to the side, 122cm wide 56cm deep 73cm high £800 - 1,200

A10 CITES Licence no. 576763/19



693

**Lot 694**

Four French wrought iron twin-branch wall lights, 42cm wide 49cm high (4) £300 - 500



694

**FURNITURE MADE OF BRAZILIAN ROSEWOOD (DALBERGIA NEGRA)**

To comply with CITES Regulations on post-1947 furniture made of Brazilian Rosewood, all post-war rosewood furniture items have Article 10 certificates. If you are purchasing rosewood furniture for commercial purposes and not solely for your own use, CITES regulations require you to obtain your own certificate. As part of the process of obtaining your document, it is a requirement that you have seen sight of the Sworders' certificate or are aware of its reference number.

Please refer to Page 144 for further information regarding compliance with CITES regulations.



695

**Lot 695**

Six black and white portraits,  
mostly by C Underwood, mounted and framed, variously labelled 'Arrival Exhibition  
of the Streatham Camera Club, Henry Thornton Photographic Society',  
42.5cm wide  
50cm high overall (6)  
£150 - 250



696

**Lot 696 §**

A 670 lounge chair and 671 ottoman,  
designed by Charles and Ray Eames for  
Herman Miller with a rosewood veneered  
seat and back,  
labelled (2)  
£2,500 - 3,500

A10 CITES Licence no. 576773/01

**Lot 697**

A chrome scissor-action wall light,  
51cm high  
94cm extended approximately  
£100 - 150



697



**Lot 698**

A transistor radio, modelled as a bottle of Teacher's whisky, impressed 'Industrial Contacts Inc. New York, patent no. 68060', 31cm high  
£100 - 150

**Lot 699**

An Akai Model X-355 Cross Field Head 4-Track stereo recorder, with original instructions  
£200 - 300

**Lot 700**

An Indian rosewood coffee table, the circular top, raised on a cruciform base, labelled 'A H McIntosh Ltd.', 84.5cm diameter  
45.5cm high  
£100 - 150

**Lot 701**

A pair of teak chest of drawers, each with faux shagreen tops, two short and three long drawers with ebonised handles, one lock to each top drawer, on castors, 92cm wide  
52cm deep  
88.5cm high (2)  
£300 - 500

**Lot 702**

A two-tier table stand, 62cm high  
£100 - 150



698

699



700



701



702



703

**Lot 703 §**

A pair of rosewood 'Colonial' chairs, designed by Ole Wanscher for Poul Jeppesen, with lattice cane seats, with leather seats and backs, labelled with a 'PJ' roundel, and a 'Danish Makers' Control' label (2)

**£2,500 - 3,000**

A10 CITES Licence  
no. 576763/17



704



**Lot 704 §**

A rosewood dining room suite, designed by Niels Otto Møller for J L Møller, comprising:  
**an extending dining table,**

model No.15, with folding leaf, on four tapering legs, extended 174cm

72cm high, and

**a set of six chairs,**

model No.78, with triple rail backs, woven seats, on tapering legs, 80cm (7)

**£1,500 - 2,000**

A10 CITES Licence no. 576763/18

**FURNITURE MADE OF BRAZILIAN ROSEWOOD (DALBERGIA NEGRA)**

To comply with CITES Regulations on post-1947 furniture made of Brazilian Rosewood, all post-war rosewood furniture items have Article 10 certificates. If you are purchasing rosewood furniture for commercial purposes and not solely for your own use, CITES regulations require you to obtain your own certificate. You would need to contact the Animal Health and Veterinary Laboratories Agency ('AHVLA') and, as part of the process of obtaining your document, it is a requirement that you have seen sight of the Sworders' certificate or are aware of its reference number.

It is therefore the responsibility of commercial buyers to ensure that they obtain a copy of the appropriate certificate, or the certificate reference number, after purchase from Sworders Fine Art Auctioneers.

All certificate numbers are also listed on our website [www.sworder.co.uk](http://www.sworder.co.uk).



**Lot 705**

A 'Papa Bear' armchair and ottoman,  
designed by Hans Wegner for A P Stolen Copenhagen,  
*recently upholstered, branded,*  
80cm wide (2)  
£3,000 - 5,000

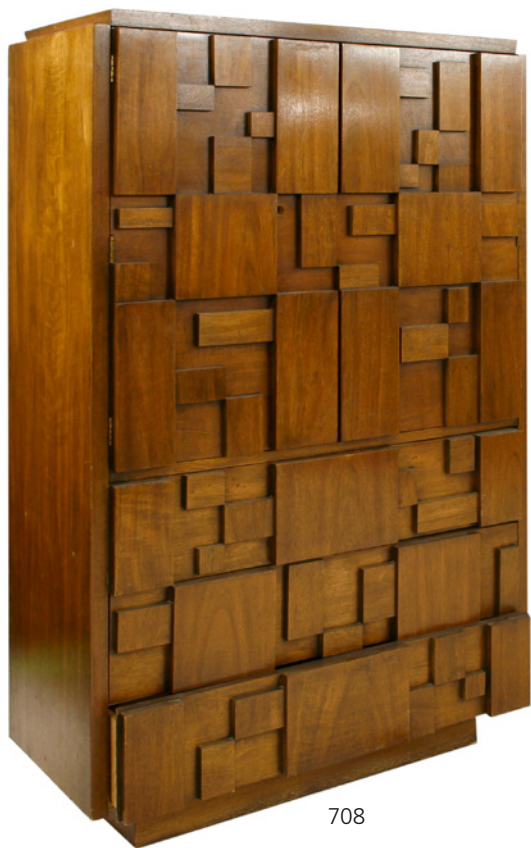
**Lot 706 §**

A rosewood circular drop-leaf dining table,  
by Peter Hvidt and Orla Mølgaard-Nielsen for France & Son,  
130cm wide  
195cm open  
72.5cm high  
£1,500 - 2,000  
A10 CITES Licence no. 576763/20

**Lot 707**

A near pair of metal and brass standard lamps,  
one with verdigris, *lacking glass shades,*  
180cm high (2)  
£250 - 350





708

**Lot 708**

A Lane walnut block cabinet,  
opening to reveal a drawer over three further  
block fronted drawers, branded '*Lane Avista,  
Virginia*'  
96.5cm wide  
46cm deep  
103cm high  
£400 - 600



709

**Lot 709 §**

A rosewood dining table,  
1970s, by Dyrland, of oval form, with two  
extra leaves,  
164cm long, 264cm extended  
115cm wide, and  
eight chairs (2+6) (9)  
£500 - 800



710

**Lot 710**

A pair of burr ash veneered console  
tables,  
on chrome plinths,  
106.5cm square  
73.5cm high  
£150 - 200

**Lot 711**

A modern burr ash and chrome coffee  
table,  
with canted corners, with fluted supports,  
77cm square  
48.5cm high  
£200 - 300

**Lot 712**

An Italian chrome and painted table  
lamp,  
with a ball finial and eight cream conical  
shades,  
46cm high  
£150 - 200



711



712





713



714



715



716



717

**Lot 713**

A teak circular table and chair suite, designed by Frem Rojle for Hans Olsen, comprising a table and four chairs, with an extra leaf, *branded*, 106cm diameter 157cm extended £700 - 900

**Lot 714**

A pair of Danish teak side tables, 1950s, designed by Hans C Andersen, each of circular form on a turned stem and tripod base, *both stamped to the underside, 'Made in Denmark, designed by Hans C Andersen, Denmark'*, 36.5cm wide 45cm high (2) £200 - 300

**Lot 715**

A J16 red rocking chair, designed by Hans Wegner, with a string seat, *labelled 'FDR Mobler'* £200 - 300

**Lot 716**

A 'Gras' table lamp, designed by Jan Roth for Ingo Maurer, in 1973, with a polished shade and an aluminium plinth, 44cm high £150 - 200

**Lot 717**

An EA108 desk chair, after a design by Charles and Ray Eames, *labelled 'ICF Cadsana'*, together with a table (2) £150 - 200

**Lot 718**

A silver pickle spoon, *Leslie Durban, London 1953*, 20.5cm long £80 - 120

**Lot 719**

A George Jensen sterling silver pendant, of square form pierced with two birds on a wheat ear, numbered '250', 4cm, and two bar brooches, numbered 287 and 211, 5 and 6.7cm (3) £200 - 300



718



719



720

**Lot 720**

**'Cultural Ties',**

seventy-eight silk ties designed by contemporary artists, from the edition of 300, manufactured by Ratti, Italy, published for the benefit of UNICEF by Cultural Ties, in the original presentation box, numbered on the reverse, box 45 x 15.5 x 4.5cm (78)

£1,500 - 2,000

Cultural Ties, a celebration of cultural diversity, was a global project and the brainchild of London art dealer, Kapil Jariwala. The brief was for 77 artists from around the world to design neck ties. A limited edition of 300 of each tie were produced for sale worldwide via selected retail outlets, gallery shops and the internet.

The contributing artists were Makoto Aida, Douglas Allsop, Darren Almond, Saleem Arif, Sue Arrowsmith, Sylvia Benitez, George Blacklock, Peter Blake, Louise Bourgeois, John Carter, Patrick Caulfield, Jake Chapman, Dinos Chapman, Maria Chevska, Sandro Chia, Adam Chodzko, Jogen Chowdhury, Shelagh Cluett, Bernard Cohen, Enzo Cucchi, Alan Davie, Paul Davis, Mariano de Blas, Teresita Dennis, Angus Fairhurst, Noel Forster, Terry Frost, Paola Gandolfi, Alan Glovsky, Selma Gürbüz, Maggi Hambling, Tony Hayward, Tim Head, Gottfried Helnwein, John Hoyland, Gary Hume, Albert Irvin, Cameron Jamie, Alex Katz, Balraj Khanna, Ken Kiff, Kornar & Melamid + Juthanam, Jeff Koons, Guillermo Kuitca, Yayoi Kusama, David Leapman, Richard Long, Jock McFadyen, John McLean, Gina Metcalf, Sally Musgrove, Yoshitomo Nara, Shinro Ohtake, Jorge Orta, Lucy Orta, Shanti Panchal, Ada Bird Petyarre, Tom Phillips, Steven Pippin, Jaime Plensa, Marc Quinn, Raza, Simon Read, Gulam Sheikh, David Shrigley, Lucy Swan, Walala Tjapaltjarri, David Tremlett, Junichi Tsunoda, Kyoichi Tsuzuki, Simon Willis, Richard Wilson, Bill Woodrow, Kenji Yanobe and Letitia Yhap.



722

**Lot 721**

A collection of ten Venetian glass scarf or finger rings,

2.5cm diameter (10)

£80 - 120

**Lot 722**

'A Canne' bottle vase,

35cm high

£500 - 800



721



**Lot 723**

A set of twelve 'A Canne' beakers,  
designed by Gio Ponti for Venini,  
a jug,  
18cm high, and  
a carafe,  
26cm high (14)  
£1,500 - 2,500



723

**Lot 724**

A Nonfoux glass tazza,  
dated 1987, by Philip Baldwin Monica  
Guggisberg, in purple and blue glass,  
*etched 'B/6 and '87'*,  
32cm diameter, and  
a glass comport,  
in purple glass and with fruit to the  
stem, *unsigned*,  
26.5cm diameter (2)  
£200 - 300



724

**Lot 725**

A Kosta Boda 'Moonlanding' glass  
vase,  
designed by Monica Backström, c.2000,  
cased in textured frit over clear, over  
green, over blue, with polished window,  
original label and engraved signature,  
21cm diameter  
13cm high  
£150 - 250



725

**Lot 726**

An Orrefors 'Ariel' glass vase,  
designed by Edvin Öhrström  
(1906-1994), *etched signature*  
*and number '957913' with*  
*'Orrefors Sweden' sticker*,  
20cm high  
£1,500 - 2,000



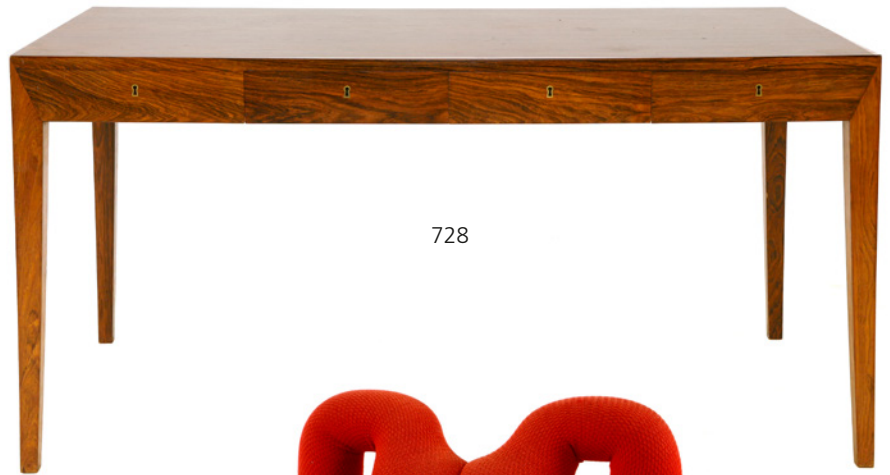
726



727

**Lot 727**

A wrought iron hanging,  
in the manner of Alessandro Mazzucotelli, with  
multiple lights and a glass shade,  
140cm high approximately  
£800 - 1,200

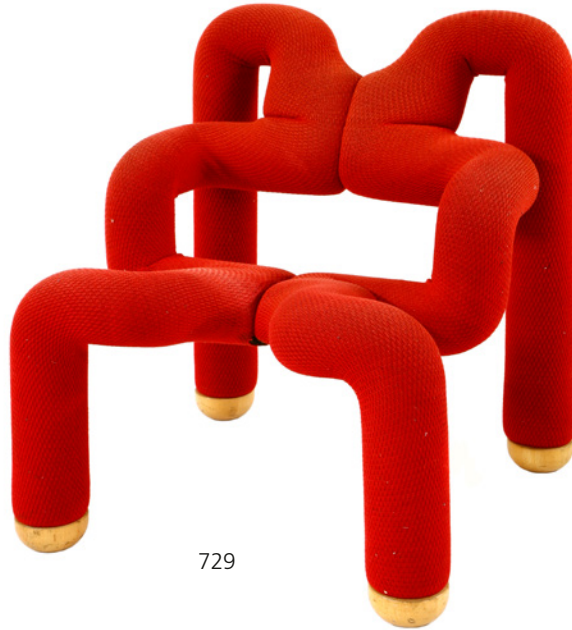


728

**Lot 728 §**

A rosewood desk,  
designed by Severin Hansen for Møbelsnedkeri,  
Denmark, with four frieze drawers,  
143cm wide  
75cm deep  
73cm high  
£3,000 - 5,000

A10 CITES Licence no. 576763/16



729

**Lot 729**

A Ekström lounge chair,  
designed by Terje Ekström,  
70cm wide  
82cm high  
£150 - 200

**Lot 730**

The 'Cavour' desk,  
designed by Carlo Mollino in 1949, modern, the glass top  
over a single drawer opposite and five further drawers,  
220cm wide  
83cm high approximately  
£500 - 800



730



**FURNITURE MADE OF BRAZILIAN ROSEWOOD (DALBERGIA NEGRA)**

To comply with CITES Regulations on post-1947 furniture made of Brazilian Rosewood, all post-war rosewood furniture items have Article 10 certificates.

If you are purchasing rosewood furniture for commercial purposes and not solely for your own use, CITES regulations require you to obtain your own certificate. You would need to contact the Animal Health and Veterinary Laboratories Agency ('AHVLA') and, as part of the process of obtaining your document, it is a requirement that you have seen sight of the Sworders' certificate or are aware of its reference number.

It is therefore the responsibility of commercial buyers to ensure that they obtain a copy of the appropriate certificate, or the certificate reference number, after purchase from Sworders Fine Art Auctioneers.

All certificate numbers are also listed on our website [www.sworder.co.uk](http://www.sworder.co.uk).

**Lot 731**

A 'Lilia' mirror,  
designed by Lugano Frigerio,  
66cm wide  
116cm high  
£150 - 200

**Lot 732**

An oak tall chest of drawers,  
c.1990, with ebony dot details,  
a wide cornice over twelve short and six  
graduated long drawers,  
57cm wide  
57cm deep  
142cm high  
£800 - 1,200

**Lot 733**

A pair of Danish tan leather armchairs,  
by Mogens Hansen,  
78cm wide  
75cm deep  
80cm high (2)  
£200 - 300

**Lot 734 §**

A Danish rosewood desk,  
designed by Kai Kristensen for Feldballe Mobelfabrik, the  
shaped kidney top over four drawers, a tambour cupboard  
to the side, opening to reveal revolving two-tier shelves,  
137cm wide  
71cm deep  
74.5cm high  
£1,500 - 2,000

A10 CITES Licence no. 576763/01



731



732



733



734

## GLOSSARY OF PICTURE CATALOGUING TERMS

A work catalogued with the forename(s) and surname of a recognised destination of an artist is or is probably a work by the artist, eg. David Cox. Nevertheless, intending buyers are reminded that while a full designation is our highest category or authenticity, no unqualified statement as to the authorship is made or intended. A full cataloguing does not necessarily imply a full warranty.

### **Attributed to David Cox**

in our opinion a work of the period of the artist which may be in whole or in part the work of the artist.

### **Circle of David Cox**

in our opinion a work from the period of the artist and showing his influence.

### **Follower of David Cox**

in our opinion a work executed in the style of David Cox

### **After David Cox**

in our opinion a copy of any date after a work by the artist

### **Signed/inscribed/dated**

in our opinion the work has been signed/inscribed/dated by the artist

### **Bears/with signature, inscription, date**

in our opinion the signature/inscription/date are not by the hand of the named artist.

The addition of a question mark (?) after any of the above cataloguing terms indicates an element of doubt.

A work catalogued as 'School' accompanied by the name of a place or country and a date means that in our opinion the work was executed at that time and in the location, eg. South Netherlands School, circa 1750.

All references to signatures, inscriptions and dates refer to the present state of the work, ie. as at the time of inspection for the purpose of cataloguing.

Condition reports are not included in the descriptions.

## ARTIST'S RESALE RIGHT (ARR)

### **What is Artist's Resale Right?**

Following a European Directive in 2006, the Artist's Resale Right entitles creators of original works of art to a royalty each time their work is resold, with the involvement of an auction house, for 1,000 Euros or more.

This right covers sales of work by living artists and also the beneficiaries and heirs of artists deceased within the last 70 years of the sale.

### **How are resale royalties calculated?**

The artist's royalty depends on the hammer price (sale price without any VAT or Buyer's Premium). The higher the sale price of the artwork, the lower the overall royalty rate. The royalty is worked out according to a sliding scale from 4% to 0.25%.

Hammer Price	Royalty
From 0 to €50,000	4%
From €50,000.01 to €200,000	3%
From €200,000.01 to €350,000	1%
From €350,000.01 to €500,000	0.5%
Exceeding €500,000	0.25%

### **What is the qualifying threshold?**

An artwork must sell for more than €1,000 to qualify for a royalty. The law defines the price threshold in Euros and, because the exchange rate between the two currencies changes daily, the equivalent in Pounds Sterling must be worked out according to the exchange rate on the date the artwork was sold.

### **What nationality must an artist be to qualify?**

The Artist's Resale Right applies to the sale of artworks in the European Economic Area (EEA). The following countries are in the EEA:

Austria, Belgium, Bulgaria, Cyprus, Czech Republic, Denmark, Estonia, Finland, France, Germany, Greece, Hungary, Iceland, Ireland, Italy, Latvia, Liechtenstein, Lithuania, Luxembourg, Malta, Netherlands, Norway, Poland, Portugal, Romania, Slovak Republic, Slovenia, Spain, Sweden, United Kingdom.

Artists who are nationals of these countries are therefore generally eligible to receive resale royalties. The nationality criteria only applies to the artist and not to the beneficiaries or heirs.

### **Are all sales of artwork covered?**

The Artist's Resale Right does not apply to all sales of artworks. A royalty is only due if the following conditions are met:

- the artwork is a copyright protected work of graphic or plastic art;
- it is sold for more than €1000;
- it is sold in the secondary market with the involvement of an art market professional (e.g. auction house);
- and it is sold in the UK or another country in the European Economic Area (EEA).

**This royalty, where applicable, will be charged to the purchaser. It is exempt of VAT.**



# MODERN BRITISH AND 20TH CENTURY ART

including Great Bardfield Artists

Tuesday 26 February 2019 at 10am



Edward Bawden (1903-1989)

CHRYSANTHEMUMS AND EMMA NELSON

Signed l.r., pencil and watercolour

47 x 64cm

£4,000 - 6,000

Enquiries:

Amy Scanlon

[amyscanlon@sworder.co.uk](mailto:amyscanlon@sworder.co.uk)

01279 817778



# INTO THE GROOVE (1950-1970)

Design | Fashion | Music | Rock 'n' Roll | Photography

Studio Ceramics | Festival of Britain Design | Film | Space | Travel

Tuesday 9 July 2019 at 10am | Entries close Friday 17 May







Enquiries:  
John Black  
[johnblack@sworder.co.uk](mailto:johnblack@sworder.co.uk)  
01279 817778



If you are unable to attend the sale we are happy to execute bids on your behalf. This service is free and confidential.

- If you successfully purchase a lot, or lots, we will forward an invoice shortly after the sale by email or within 3 working days by post. We recommend that you check the success of your bids after the sale on our website.

- Where we receive more than one bid of the same value, the one received first will take precedence.
- Where appropriate, your bids will be rounded down to the nearest amount consistent with the Auctioneer's bidding increments.
- Please note our post is not delivered until midday, therefore postal bids need to reach us on the day preceeding the sale.
- We draw attention to our full terms and conditions on our website.

## Received

Date: \_\_\_\_\_

Time: \_\_\_\_\_

By: \_\_\_\_\_

Entered

Date:
Time:
By:
Bid No.

Forward to:  
SWORDERS FINE ART AUCTIONEERS,  
CAMBRIDGE ROAD, STANSTED MOUNTFITCHET,  
ESSEX CM24 8GE  
TEL: 01279 817778 FAX: 01279 817779  
[www.sworder.co.uk](http://www.sworder.co.uk)

DATE OF AUCTION: 20th Century Design  
Tuesday 29 January 2019, 10am

NAME: \_\_\_\_\_

TITLE: INITIALS: CLIENT NO.

ADDRESS:

POSTCODE: TEL (DAYTIME)

[illegible]

*Please bid on my behalf for the above mentioned lots up to the limits shown, without legal obligation to Swords, its staff or agents, or without prejudice to Swords standard Terms and Conditions printed in this catalogue.*

Signed:

Date: \_\_\_\_\_





## INFORMATION FOR BUYERS

### Introduction

The following notes are intended to assist bidders and buyers, particularly those that are inexperienced or new to our salerooms. All of our auctions are governed by our Conditions of Business incorporating the Terms of Consignment (primarily applicable to sellers), the Terms of Sale (primarily applicable to bidders and buyers) and any notices that are displayed in our salerooms or announced by the auctioneer at the auction. Our Conditions of Business are available for inspection at our salerooms and the Terms of Sale are printed in the back of our auction catalogues. Our staff will be happy to help you if there is anything in our Conditions of Business that you do not fully understand.

**Please make sure that you read our Terms of Sale set out in this catalogue or on our website carefully before bidding in the auction. If your bid is successful, you will be obliged to comply with our Terms of Sale.**

### Methods of Payment

Lots must be paid for before they are collected. For those attending the auction we ask that lots are paid for on the day of the sale. Methods by which we accept payment are detailed on our web site, including online payment upon receipt of your invoice, and these should be paid by 5pm on the Friday following the sale. We accept cash to an upper limit of 10,000 euros equivalent. We accept credit card payments to an upper limit of £5,000. Usually any cheques will need to be cleared before you can take the goods away.

### Collection and storage

All lots should be paid for and collected by 5pm on the Friday following the sale. Commission bidders should check the success of their bids and arrange payment and collection within this time. Please note what the Terms of Sale say about collection and storage. Items not removed by 5pm on Friday may be removed at the purchaser's expense and storage charges of £10 as an administration fee and £2 per lot per day may be charged (plus vat). Please note that we will apply these charges strictly to Furniture purchased in our Homes and Interiors Sales.

### Dispatch

We are rarely able to pack and dispatch purchases. A choice of shippers is detailed on our web site.

### Agency

As auctioneers we usually act on behalf of the seller whose identity, for reasons of confidentiality, is not normally disclosed. If you buy at auction your contract for the goods is with the seller, not with us as auctioneer.

### Estimates

Estimates are designed to help you gauge what sort of sum might be involved for the purchase of a particular lot. Estimates may change and should not be thought of as the sale price. The lower estimate may represent the reserve price (the minimum price for which a lot may be sold) and will not be below the reserve price. Estimates do not include the buyer's premium or VAT (where chargeable). Estimates are prepared some time before the auction and may be altered by a saleroom notice or announcement by the auctioneer before the auction of the lot. They are not definitive.

### Buyer's Premium

The Terms of Sale oblige you to pay a buyer's premium at 23% on the hammer price of each lot purchased, except for our Fine Wine and Port auctions when it is 15%. In addition, VAT is charged on these premiums (see below).

### VAT

Items in our catalogue may be marked with a dagger † or double dagger ‡, which indicates that VAT is payable by the buyer on the hammer price and the buyer's premium at either the standard rate (currently 20%) or a reduced rate (currently 5%), depending upon the legal requirements relating to that lot.

Lots which do not have either of the above symbols have no VAT payable on the hammer price. This is because such lots are sold using the Auctioneers' Margin Scheme. The VAT included within the premium is not recoverable as input tax.

### Inspection of goods by the buyer

As we act on behalf of the seller, we are dependent on information provided by the seller about their goods. We may inspect lots and will act reasonably in taking a general view about them. However, we are normally unable to carry out detailed examinations of lots to check their condition in the way a buyer would do. You will have ample opportunity to inspect the goods. You must inspect and investigate lots that you might wish to bid for. **Please note carefully the exclusion of liability for the condition of lots set out in the Terms of Sale at clause 12.4.**

### Condition Reports

We may be able to assist buyers unable to view by emailing a condition report, but these are based solely on our own opinion and are for guidance only and no responsibility is accepted for their accuracy. Intending buyers are strongly encouraged to view. Condition reports cannot be prepared on the day of the sale.

### Electrical goods

These are sold as "antiques" only. If you buy electrical goods for use you must ask a qualified electrician to check them for compliance with safety regulations before you use them.

### Export of goods

If you intend to export goods you must find out:

- whether an export licence is needed; and
- if there is a prohibition on importing goods of that character e.g. because the goods contain prohibited materials such as ivory.

### Bidding

Bidders will be required to register with us before the auction starts. We reserve the right to impose a deadline prior to the auction by which you must register or by which we must receive a commission bid. If you wish to bid on high value lots this deadline may be several days before the auction in order to allow us sufficient time to carry out the necessary checks. Lots will be invoiced to the name and address on the registration form. You will need to provide us with proof of your identity in a form acceptable to us and such other information as we may require. Please enquire in advance about our arrangements for telephone or online bidding. Please note that we may refuse to register you if you do not provide us with all the information and documentation that we ask for or at our discretion.

### Commission bidding

You may leave commission bids with us indicating the maximum amount to be bid against a lot (excluding the buyers' premium and/or any applicable VAT). We will execute commission bids as cheaply as possible having regard to the reserve (if any) and competing bids. If two buyers submit identical commission bids we may prefer the first bid received (where this can be reasonably ascertained). We recommend leaving commission bids online via our website, though please contact us about leaving bids by telephone or fax/email. All absentee bids should be received at least 30 minutes before the auction commences; we cannot guarantee to execute commission bids received after this time.

### Telephone Bidding

If you are unable to come to the auction it may be possible to bid on the telephone for higher value lots. Please note that this service is for lots with an estimate of £500 or more. The number of lines is limited so we would urge serious telephone bidding only and ask that you be prepared to bid over the top estimate. It is advisable to leave a maximum covering bid in case we are not able to contact you by telephone. All lines must be booked and confirmed in writing before the day of the auction and preferably some time in advance. Telephone bidding involves many variables and whilst we take every care to ensure the smooth operation of this service, we cannot be held liable if your bids are missed for any reason.

### Online Bidding

Any lots purchased via a live online bidding service will be subject to an additional commission charge on the hammer price payable by the bidder, in accordance with rates specified by the online service. From 1 November 2018 these charges will be charged at 3% plus VAT while bidding via the Sworders website. If bidding through the-saleroom.com this will be charged at 4.95% plus VAT. Both charges will be payable to us on top of the hammer price and our buyer's commission.

## IMPORTANT NOTICES

### Removal of lots

**ALL** lots are to be removed from the premises by **5.00pm at the latest on the Friday following each sale**. Sworders retain the right to remove lots remaining after this time into safe storage, for which a charge will be made.

### Electrical Goods

All electrical goods offered in this sale have either been tested and certified safe or unsafe by an appropriately qualified electrician. All electrical goods certified safe must be re-commissioned by an appropriately qualified electrician and we recommend those certified safe are similarly re-commissioned.

### Post 1950 Upholstered Furniture

All items of furniture included in this sale are offered for sale as works of art. The items may not comply with the Furniture and Furnishings (Fire) Safety Regulations 1988 and for this reason, they should not be used in a private dwelling.

### Furniture made of Brazilian Rosewood (Dalbergia Negra)

To comply with CITES Regulations on Post-1947 furniture made of Brazilian Rosewood, all post-war rosewood furniture items have Article 10 certificates.

If you are purchasing rosewood furniture for commercial purposes and not solely for your own use, CITES regulations require you to obtain your own certificate. You would need to contact the Animal Health and Veterinary Laboratories Agency ('AHVLA') and, as part of the process of obtaining your document, it is a requirement that you have seen sight of the Sworders' certificate or are aware of its reference number.

It is therefore the responsibility of commercial buyers to ensure that they obtain a copy of the appropriate certificate, or the certificate reference number, after purchase from Sworders Fine Art Auctioneers. Items are marked with this sign \$.

## TERMS OF SALE

Both the sale of goods at our auctions and your relationship with us are governed by the Terms of Consignment (primarily applicable to sellers) the Terms of Sale (primarily applicable to bidders and buyers) and any notices displayed in the saleroom or announced by us at the auction (collectively, the "Conditions of Business"). The Terms of Consignment and Terms of Sale are available at our saleroom on request.

Please read these Terms of Sale carefully. Please note that if you register to bid and/or bid at auction this signifies that you agree to and will comply with these Terms of Sale.

Please note that these Terms of Sale relate to auctions held at our premises only. We have separate terms for online only auctions.

### 1. Definitions and interpretation

To make these Terms of Sale easier to read, we have given the following words a specific meaning:

<b>"Auctioneer"</b>	means GES & Sons Ltd trading as Sworders Fine Art Auctioneers, a company registered in England and Wales with registration number 6858916 and whose registered office is located at Cambridge Road, Stansted Mountfitchet, Essex CM24 8GE or its authorised auctioneer, as appropriate;
<b>"Bidder"</b>	means a person who places a bid for Goods at our auction;
<b>"Buyer"</b>	means the person who makes the highest bid for the Goods accepted by the Auctioneer;
<b>"Commission"</b>	means the commission that we charge you on the sale of the Goods as set out in Clause 5 below;
<b>"Consumer"</b>	means an individual acting for purposes which are wholly or mainly outside that individual's trade, business, craft or profession;
<b>"Consumer Contracts Regulations"</b>	means the Consumer Contracts (Information, Cancellation and Additional Charges) Regulations 2013;
<b>"Deliberate Forgery"</b>	means: (a) an imitation made with the intention of deceiving as to authorship, origin, date, age, period, culture or source; (b) which is described in the catalogue as being the work of a particular creator without qualification; and (c) which at the date of the auction had a value materially less than it would have had if it had been as described;
<b>"FCA"</b>	means the Financial Conduct Authority;
<b>"Goods"</b>	means the goods that you consign to us for sale at our auction;
<b>"Hammer Price"</b>	means the level of the highest bid for a Lot accepted by the Auctioneer;
<b>"Premium"</b>	means the premium charged to the Buyer on the sale of the Goods in accordance with the Terms of Sale;
<b>"Price"</b>	means the total of the Hammer Price, Premium and any applicable VAT;
<b>"Proceeds"</b>	means the Price less the Commission, the Premium, any expenses incurred to your account and any applicable VAT;
<b>"Reserve"</b>	means the minimum price at which the Goods may be sold;
<b>"Seller"</b>	means the owner of the Goods and any agent who consigns the Goods for sale on the owner's behalf (if applicable);
<b>"Terms of Consignment"</b>	means these terms of consignment;
<b>"Terms of Sale"</b>	means the terms of sale for bidders or buyers at our auctions;
<b>"Trader"</b>	means a Seller who is acting for purposes relating to that Seller's trade, business, craft or profession, whether acting personally or through another person acting in the trader's name or on the trader's behalf (such as an agent and/or the Auctioneer);
<b>"VAT"</b>	means any value added tax or equivalent sales tax; and
<b>"Website"</b>	means our website available at <a href="http://www.sworders.co.uk">www.sworders.co.uk</a> .

In these Terms of Sale the words 'you', 'yours', etc. refer to you as the Buyer. The words "we", "us", etc. refer to the Auctioneer. Any reference to a 'Clause' is to a clause of these Terms of Sale unless stated otherwise.

### 2. Information that we are required to give to Consumers

2.1 A description of the main characteristics of each Lot as contained in the auction catalogue.

2.2 Our name, address and contact details as set out herein, in our auction catalogues and/or on our Website.

2.3 The price of the Goods and arrangements for payment as described in Clauses 4, 5, 7 and 8.

2.4 The arrangements for collection of the Goods as set out in Clauses 8 and 9.

2.5 Your right to return a Lot and receive a refund if the Lot is a Deliberate Forgery as set out in Clause 13.

2.6 We and Trader Sellers have a legal duty to supply any Lots to you in accordance with these Terms of Sale.

2.7 If you have any complaints, please send them to us directly at the address set out on our Website.

### 3. Bidding procedures and the Buyer

3.1 You must register your details with us before bidding and provide us with any requested proof of identity and billing information, in a form acceptable to us. You must also satisfy any security arrangements we have in place before entering the auction room to view or bid.

3.2 We strongly recommend that you attend the auction in person. You are responsible for your decision to bid for a particular Lot. If you bid on a lot, including by telephone and online bidding, or by placing a commission bid, we assume that you have carefully inspected the Lot and satisfied yourself regarding its condition.

3.5 Bidders will be deemed to act as principals, even if the Bidder is acting as an agent for a third party.

3.6 We may bid on Lots on behalf of the Seller up to one bid below the Reserve.

3.7 We may refuse to accept any bid if it is reasonable for us to do so.

3.8 Bidding increments will be at our sole discretion (but will be in line with standard auction practice).

### 4. The purchase price

As Buyer, you will pay:

- the Hammer Price;
- a premium of 23% plus VAT of the Hammer Price or 15% plus VAT for our Fine Wine and Port Auction;
- any artist's resale right royalty payable on the sale of the Lot; and
- any VAT due.

### 5 VAT

5.1 You shall be liable for the payment of any VAT applicable on the Hammer Price and premium due for a Lot. Please see the symbols used in the auction catalogue for that Lot and the "Information for Buyers" in our auction catalogue for further information.

5.2 We will charge VAT at the current rate at the date of the auction.

### 6. The contract between you and the Seller

6.1 The contract for the purchase of the Lot between you and the Seller will be formed after the hammer falls when the highest bid for the Goods at the auction is written into the Auction book by the Auctioneer.

6.2 You may directly enforce any terms in the Terms of Consignment against a Seller to the extent that you suffer damages and/or loss as a result of the Seller's breach of the Terms of Consignment.

6.3 If you breach these Terms of Sale, you may be responsible for damages and/or losses suffered by a Seller or us. If we are contacted by a Seller who wishes to bring a claim against you, we may in our discretion provide the Seller with information or assistance in relation to that claim.

6.4 We normally act as an agent only and will not have any responsibility for default by you or the Seller (unless we are the Seller of the Lot).

### 7. Payment

7.1 Immediately following your successful bid on a Lot you will:

7.1.1 give to us, if not already provided to our satisfaction, proof of identity in a form acceptable to us (and any other information that we require in order to comply with our anti-money laundering obligations); and

7.1.2 pay to us the Total Amount Due in any way that we agree to accept payment. Note there is an upper limit of 10,000 euros equivalent for payments in cash.

7.2 If you owe us any money, we may use any payment made by you to repay these debts.

### 8. Title and collection of purchases

8.1 Once you have paid us in full the Total Amount Due for any Lot, ownership of that Lot will transfer to you. You may not claim or collect a Lot until you have paid for it.

8.2 You will (at your own expense) collect any Lots that you have purchased and paid for not later than 5pm on the Friday following the auction.

8.3 If you do not collect the Lot within this time period, you will be responsible for any reasonable removal and storage charges in relation to that Lot.

8.4 Risk of loss or damage to the Lot will pass to you when you (or your agents) take physical possession of the Lot.

8.5 If you do not collect the Lot that you have paid for within thirty days after the auction, we may sell the Lot. We will pay the proceeds of any such sale to you, but will deduct any storage charges or other sums that we have incurred in the storage and sale of the Lot. We reserve the right to charge you a selling commission at our standard rates on any such resale of the Lot.

### 9. Remedies for non-payment or failure to collect purchases

9.1 Please do not bid on a Lot if you do not intend to buy it. If your bid is successful, these Terms of Sale will apply to you.

3.3 If you instruct us in writing, we may execute commission bids on your behalf. Neither we nor our employees or agents will be responsible for any failure to execute your commission bid, unless our failure to do so is unreasonable. Where two or more commission bids at the same level are recorded we have the right to prefer the first bid made (where this can be reasonably ascertained).

3.4 The Bidder placing the highest bid for a Lot accepted by the Auctioneer will be the Buyer at the Hammer Price. Any dispute about a bid will be settled at our discretion. We may reoffer the Lot during the auction or may settle the dispute in another way. We will act reasonably when deciding how to settle the dispute.



This means that you will have to carry out your obligations set out in these Terms of Sale. If you do not comply with these Terms of Sale we may (acting on behalf of the Seller and ourselves) pursue one or more of the following measures:

9.1.1 take action against you for damages for breach of contract;

9.1.2 reverse the sale of the Lot to you and/or any other Lots sold by us to you;

9.1.3 resell the Lot by auction or private treaty (in which case you will have to pay any difference between the price you should have paid for the Lot and the price we sell it for as well as the charges outlined in Clause 8.5). Please note that if we sell the Lot for a higher amount than your winning bid, the extra money will belong to the Seller;

9.1.4 remove, store and insure the Lot at your expense;

9.1.5 if you do not pay us within **five business days** of your successful bid, we may charge interest at a rate not exceeding 1.5% per month on the total amount due;

9.1.6 keep that Lot or any other Lot sold to you until you pay the Total Amount Due;

9.1.7 reject or ignore bids from you or your agent at future auctions or impose conditions before we accept bids from you; and/or

9.1.8 if we sell any Lots for you, use the money made on these Lots to repay any amount you owe us.

9.2 We will act reasonably when exercising our rights under Clause 9.1. We will contact you before exercising these rights and try to work with you to correct any non-compliance by you with these Terms of Sale.

#### 10. Health and safety

Although we take reasonable precautions regarding health and safety, you are on our premises at your own risk. Please note the lay-out of the premises and security arrangements. Neither we nor our employees or agents are responsible for the safety of you or your property when you visit our premises, unless you suffer any injury to your person or damage to your property as a result of our, our employees' or our agents' negligence.

#### 11. Warranties

11.1 The Seller warrants to us and to you that:

11.1.1 the Seller is the true owner of the Lot for sale or is authorised by the true owner to offer and sell the lot at auction;

11.1.2 the Seller is able to transfer good and marketable title to the Lot to you free from any third party rights or claims; and

11.1.3 as far as the Seller is aware, the main characteristics of the Lot set out in the auction catalogue (as amended by any notice displayed in the saleroom or announced by the Auctioneer at the auction) are correct.

11.2 If, after you have placed a successful bid and paid for a Lot, any of the warranties above are found not to be true, please notify us in writing. Neither we nor the Seller will be liable to pay you any sums over and above the Total Amount Due and we will not be responsible for any inaccuracies in the information provided by the Seller except as set out below.

11.3 Please note that many of the Lots that you may bid on at our auction are second-hand.

11.4 If a Lot is not second-hand and you purchase the Lot as a Consumer from a Seller that is a Trader, a number of additional terms may be implied by law in addition to the Seller's warranties set out at Clause 11.1 (in particular under the Consumer Rights Act 2015). These Terms of Sale do not seek to exclude your rights under law as they relate to the sale of these Lots.

11.5 Save as expressly set out above, all other warranties, conditions or other terms which might have effect between the Seller and you, or us and you, or be implied or incorporated by statute, common law or otherwise are excluded.

#### 12. Descriptions and condition

12.1 Our descriptions of the Lot will be based on: (a) information provided to us by the Seller of the Lot (for which we are not liable); and (ii) our opinion (although it is likely that we will not be able to carry out a detailed inspection of each Lot).

12.2 We will give you a number of opportunities to view and inspect the Lots before the auction. You (and any independent consultants acting on your behalf) must satisfy yourself about the accuracy of any description of a Lot. We shall not be responsible for any failure by you or your consultants to properly inspect a Lot.

12.3 Representations or statements by us as to authorship, genuineness, origin, date, age, provenance, condition or estimated selling price involve matters of opinion. We undertake that any such opinion will be honestly and reasonably held and accept liability for opinions given negligently or fraudulently.

12.4 Please note that Lots (in particular second-hand Lots) are unlikely to be in perfect condition. Lots are sold "as is" (i.e. as you see them at the time of the auction). Neither we nor the Seller accept any liability for the condition of second-hand Lots or for any condition issues affecting a Lot if such issues are included in the description of a Lot in the auction catalogue (or in any saleroom notice) and/or which the inspection of a Lot by the Buyer ought to have revealed.

#### 13. Deliberate Forgeries

13.1 You may return any Lot which is found to be a Deliberate Forgery to us within 30 days of the auction provided that you return the Lot to us in the same condition as when it was released to you, accompanied by a written statement identifying the Lot from the relevant catalogue description and a written statement of defects.

13.2 If we are reasonably satisfied that the Lot is a Deliberate Forgery we will refund the money paid by you for the Lot (including any Premium and applicable VAT) provided that if:

13.2.1 the catalogue description reflected the accepted view of experts as at the date of the auction; or

13.2.2 you personally are not able to transfer good and marketable title in the Lot to us, you will have no right to a refund under this Clause 13.2.

13.3 If you have sold the Lot to another person, we will only be liable to refund the price that you paid for the Lot. We will not be responsible for repaying any additional money you may have made from selling the Lot.

13.4 Your right to return a Lot that is a Deliberate Forgery does not affect your legal rights and is in addition to any other right or remedy provided by law or by these Terms of Sale.

#### 14. Our liability to you

14.1 We will not be liable for any loss of opportunity or disappointment suffered as a result of participating in our auction.

14.2 In addition to the above, neither we nor the Seller shall be responsible to you and you shall not be responsible to the Seller or us for any other loss or damage that any of us suffer that is not a foreseeable result of any of us not complying with the Conditions of Business. Loss or damage is foreseeable if it is obvious that it will happen or if at the time of the sale of the Lot, we, you and the Seller knew it might happen.

14.3 Subject to Clause 14.4, if we are found to be liable to you for any reason (including, amongst others, if we are found to be negligent, in breach of contract or to have made a misrepresentation), our liability will be limited to the total purchase price paid by you to us for any Lot.

14.4 Notwithstanding the above, nothing in these Terms of Sale shall limit our liability (or that of our employees or agents) for:

14.4.1 death or personal injury resulting from negligence (as defined in the Unfair Contract Terms Act 1977);

14.4.2 fraudulent misrepresentation; or

14.4.3 any liability which cannot be excluded by law.

#### 15. Notices

15.1 All notices between you and us regarding these Terms of Sale must be in writing and signed by or on behalf of the party giving it.

15.2 Any notice referred in Clause 15.1 may be given:

15.2.1 by delivering it by hand;

15.2.2 by first class pre-paid post or Recorded Delivery; or

15.2.3 by email, provided that receipt of the email is acknowledged by the recipient.

15.3 Notices must be sent:

15.3.1 by hand or registered post:

a. to us, at our address set out in these Terms of Sale or at our registered office address appearing on our Website; and

b. to you, at the last postal address that you have given to us as your contact address in writing; or

15.3.2 by email:

a. to us, by sending the notice to the following email address: auctions@sworder.co.uk

b. to you, by sending the notice to any email address that you have given to us as your contact email address in writing.

15.4 Notices will be deemed to have been received:

15.4.1 if delivered by hand, on the day of delivery;

15.4.2 if sent by first class pre-paid post or Recorded Delivery, two business days after posting, exclusive of the day of posting; or

15.4.3 if sent by email, at the time of transmission unless sent after 17.00 in the place of receipt in which case they will be deemed to have been received on the next business day in the place of receipt (provided that receipt is acknowledged by the recipient).

15.5 Any notice or communication given under these Terms of Sale will not be validly given if sent by fax, email, any form of messaging via social media or text message.

#### 16. Data Protection

We will hold and process any personal data in relation to you in accordance with our current privacy policy, a copy of which is available on our website.

#### 17. General

17.1 We may, acting reasonably, refuse admission to our premises or attendance at our auctions by any person.

17.2 We act as an agent for our Sellers. The rights we have to claim against you for breach of these Terms of Sale may be used by either us, our employees or agents, or the Seller, its employees or agents, as appropriate. Other than as set out in this Clause, these Terms of Sale are between you and us and no other person will have any rights to enforce any of these Terms of Sale.

17.3 We may use special terms in the catalogue descriptions of particular Lots. You must read these terms carefully along with any glossary provided in our auction catalogues.

17.4 Each of the clauses of these Terms of Sale operates separately. If any court or relevant authority decides that any of them are unlawful, the remaining clauses will remain in full force and effect.

17.5 We may change these Terms of Sale from time to time, without notice to you. Please read these Terms of Sale carefully, as they may be different from the last time you read them.

17.6 Except as otherwise stated in these Terms of Sale, each of our rights and remedies are: (a) in addition to and not exclusive of any other rights or remedies under these Terms of Sale or general law; and (b) may be waived only in writing and specifically. Delay in exercising or non-exercise of any right under these Terms of Sale is not a waiver of that or any other right. Partial exercise of any right under these Terms of Sale will not preclude any further or other exercise of that right or any other right under these Terms of Sale. Waiver of a breach of any term of these Terms of Sale will not operate as a waiver of breach of any other term or any subsequent breach of that term.

17.7 These Terms of Sale and any dispute or claim arising out of or in connection with them (including any non-contractual claims or disputes) shall be governed by and construed in accordance with the laws of England and the parties irrevocably submit to the exclusive jurisdiction of the English courts.


**These terms are based upon the recommended terms of sale by the Society of Fine Art Auctioneers and Valuers**











[www.sworder.co.uk](http://www.sworder.co.uk)

**The Stansted Auction Rooms**  
Cambridge Road  
Stansted Mountfitchet  
Essex CM24 8GE

Tel 01279 817778  
Fax 01279 817779  
Email [auctions@sworder.co.uk](mailto:auctions@sworder.co.uk)

**Hertford Office**  
42 St Andrew Street  
Hertford SG14 1JA  
Tel 01992 583508  
Fax 01992 586074  
Email [hertfordoffice@sworder.co.uk](mailto:hertfordoffice@sworder.co.uk)

**Kent Office**  
Tel 01732 757675  
Email [kent@sworder.co.uk](mailto:kent@sworder.co.uk)

