

EST. 1782
sworders
FINE ART AUCTIONEERS



20th Century Design

Wednesday 29 May 2019 at 10am





INTO THE GROOVE (1950-1975)

Tuesday 9 July, 10am



Contact:
John Black
johnblack@sworder.co.uk
01279 817778

20TH CENTURY DESIGN

at the Stansted Mountfitchet Auction Rooms

Wednesday 29 May 2019 at 10am



ORDER OF SALE

Lots 1 - 66 Arts & Crafts and Art Nouveau
Furniture and Objects

Lots 67 - 204 Art Deco Furniture, Objects
and Lighting

10-minute break

Lots 205 - 609 Modern Furniture and Design

VIEWING TIMES

Friday 24 May	9am - 5pm
Sunday 26 May	10am - 1pm
Tuesday 28 May	9am - 5pm
Wednesday 29 May	From 9am

ONLINE BIDDING

Bid live at www.sworder.co.uk (3% surcharge)

FURTHER INFORMATION

Contact: John Black

Telephone: 01279 817778

Email: auctions@sworder.co.uk

To obtain more images and condition reports for lots in this catalogue, please visit our website www.sworder.co.uk



REMOVAL OF LOTS

All lots should be removed by 5pm on Friday 7 June 2019.

Furniture lots remaining after this date will be removed to:
Perry Removals, Chapel End, Broxted, Essex CM6 2BW.

Removal will be at a cost of £20 per lot and storage will be charged at £2 per lot, per day.

ARTS & CRAFTS AND ART NOUVEAU FURNITURE AND OBJECTS

1-66



1



2



3



4



4A

Lot 1
An ash chest of drawers,
c.1890, with canted corners,
fitted with two short drawers
over three long drawers,
stenciled with label to the back,
110cm wide
58cm deep
110cm high
£250 - 350

Lot 2
An octagonal mahogany
centre table,
c.1900, by George Faulkner
Armitage, with eight baluster
legs and an undertier,
*labelled 'George Faulkner
Armitage, Altrincham'*,
103cm diameter
72cm high
£400 - 600

Lot 3
A Victorian walnut chest
of drawers,
with painted details to the
front, with brass handles,
*labelled 'Howard and Son,
Berners Street'*,
103cm wide
45cm deep
97.5cm high
£350 - 450

Lot 4
A pair of Art Nouveau mahogany and
inlaid bedside cabinets,
each with four hinged panels with fret cut
pierced designs, opening to reveal dished
insides, raised on outswept legs united by an
undertier,
37cm wide
37cm deep
72cm high (2)
£200 - 300

Lot 4A
An octagonal mahogany inlaid games
table,
with a chequerboard top, over a pierced stand,
61cm diameter
69cm high
and another table,
66.5cm high (2)
£200 - 300

Lot 5
An Italian earthenware vase,
in the style of Galileo Chini, with three handles,
the ochre ground with wave-like details,
painted with a mermaid, fish and undersea
flowers, *unsigned*,
26cm high
£150 - 250

Lot 6
An Art Nouveau twin-handled vase,
by Julius Dressler, with a mauve ground
painted with purple flowers, with green
handles, *raised mark and impressed
'0127 Austria'*,
25.5cm high
£150 - 250



5



6



7

Lot 7

Four Moser Glassworks clear and green tinted wine glasses, each engraved and gilt with grapes to the bowl, with a clear stem and further gilt details to the foot, 20cm high (4)
£150 - 250



8

Lot 8

A Dutch faience de Purmerende vase, c.1900, of squat form, decorated in the Egyptian style, inscribed 'NB faience de Pumerende Hollande 1017 Dec: E D C', 19cm high
£200 - 300



9

Lot 9

An Amphora earthenware vase, of naturalistic form with twin handles, in brown and green with gilt details, impressed marks 'Amphora Austria', stamped '3852' and '58', 38.5cm high
£200 - 300

Lot 10

A French faience pottery cat, c.1900, in the style of Émile Gallé, an attractive painted and transfer decorated model of a seated grinning cat with bright green glass eyes, 35cm high
£200 - 300



10

Lot 11

A WMF pewter easel back mirror, the cast frame modelled with a girl holding on to a flowering tree, easel backed, stamped marks, 28cm wide
36cm high
£400 - 600



11

Lot 12

An Art Nouveau patinated spelter panel, depicting a maiden watching deer in a wood, on an oak frame, 37.5cm wide
27.5cm high,
a copper wall mirror, with canted corners and fitted with mother-of-pearl mounts, 61.5 x 45cm and
a brass octagonal mirror, 65.5cm diameter (3)
£150 - 200

Lot 13

An oak mirror, with a bronze insert cast with trees and animals, birds, a moon and a reclining nude, stamped with initials and dated, within an oak frame, 23 x 30.5cm
35.5 x 42.5cm overall
£500 - 700



13



12





14

Lot 14

Julien Causse (1869-1909),
'La Fée des Glaces' (The Ice Fairy),
a bronzed spelter figure with flowers
in her hair, standing on an opalescent
glass plate by Luville, Nancy,
representing melting ice, *cast signature*,
60cm high
£2,000 - 3,000

Provenance: The Barbra Streisand
Collection, Christie's
New York, 3 March 1994;
Bonhams New York,
June 10 2005, lot 1047.

Literature: Martin Battersby
'The Colour Library of Art
Nouveau', plate 23;
Erika Gysling-Billeter
'Objekte des Jugendstils',
pl. 510.



17

Lot 15

An earthenware marbled plate,
probably by Ernst Wähli, centred with
a portrait medallion with a floral border,
unmarked,
33.5cm diameter
£150 - 250

Lot 16

An Art Nouveau marble bust of
a girl,
c. 1900, emblematic of sleep, with a
crescent moon around her neck and
stars in her hair, *unsigned*,
44cm high
£300 - 500

Lot 17

Daedalus and Icarus,
a German bronze sculpture, early
20th century, modelled as the winged
figures falling through the air, *signed*
Schl.ter, on a granite boulder plinth,
78cm high
£700 - 1,000



15



16



18



19

Lot 18

A pair of carved rosewood Secessionist wall panels,
20cm wide
122cm high (2)
£150 - 200

Lot 19

A mahogany side cabinet,
by August Ungethum, Vienna, the bronze panel by Georg Klimt (1867-1931), signed, the upper
part of stepped form, the central cupboard door inset with a bronze portrait bust in profile of a
man, enclosing adjustable shelves, flanked with glazed cupboards, with bevelled glass panels,
the lower part centred with three drawers and flanked with cupboards, *one key stamped*
'A. Ungethum, Wein V',
182cm wide
50cm deep
207cm high
£1,000 - 1,500

Georg Klimt (1867-1931) was the brother of the painter, Gustav Klimt, and is best known for
producing works of others, rather than his own designs. Having studied sculpture and carving,
he undertook a variety of commissions, most notably Oldbich's bronze doors for the Secession
building in 1899. The firm of August Ungethum was one of the most prominent in
Vienna in the early 1900s. Many prominent designers, including Hoffmann
and Moser, commissioned them to produce their work and the Wiener
Werkstätte were later to become heavily involved with the firm.

Lot 20

A Dunhill bronze humidor,
by Friedrich Gornik (1877-1943), *signed to the side*, mounted with cast
panels of hunting scenes, with studwork and vine details, the handles
modelled as squirrels and the finial surmounted with Diana and a stag,
the interior cedar lined, *stamped in gilt 'Dunhill London'*,
40cm wide
19cm deep
21cm high
£1,000 - 1,500



19 key



20



21



22

Lot 21

A Martin Brothers stoneware jug, of shouldered cylindrical form, the body incised with sunflower decoration on a brown ground, incised 'Martin Bros, London & Southall, 10.1.82', 25cm high
£250 - 350

Lot 22

A pair of Minton Secessionist pottery vases, each of tapering form, with stylised tubelined details, incised number '3632' and printed 'Mintons Ltd No. 1', restored, 30cm high (2)
£200 - 300



23

Lot 23

A Minton's Art Pottery Studio charger depicting female portrait, dated 1872, painted by Rebecca Coleman, signed R Coleman, painted with a lady in profile, printed Kensington Gore mark with impressed date code, painted '739' and monogram 'WSC', 42cm diameter
£2,000 - 3,000

Rebecca Coleman was the sister of William Stephen Coleman, who was art director at Minton's Art Pottery Studio from 1871-73.



24



25



26



Lot 24
Three Burmantofts vases, each with incised decoration, *variously numbered*, 11, 17.5 and 22cm high (3)
£150 - 200

Lot 25
Three Burmantofts vases, in turquoise and green, *variously numbered*, one *restored* 15.5, 16 and 30cm high (3)
£150 - 200

Lot 26
Three Burmantofts items, a bottle vase, with a lizard type animal to the shoulder, *restored*, 25cm high, a jug, 28cm high, and a jardinière, *cracked* 23cm high (3)
£150 - 200

Lot 27
A pair of Burmantofts faience vases, each incised with trees and courting dragons, *impressed marks and numbered '2197'*, 23cm high (2)
£200 - 300



27



28



29



30

Lot 28

A James Macintyre Florian ware vase, designed by William Moorcroft, of slender waisted form, with a wavy rim, *printed mark and with 'W Moorcroft des' in green*, 30.5cm high
£400 - 600

Lot 29

A James Macintyre Florian ware vase, designed by William Moorcroft, of slender waisted form, with a wavy rim, *printed marks and 'W Moorcroft des' in green*, restored to rim, 25cm high
£200 - 300

Lot 30

A James Macintyre 'Hazeldene' vase, designed by William Moorcroft for Liberty and Co., of slender tapering form with a waisted neck, *printed marks 'Made for Liberty & Co ans Rd no 397964' and 'W Moorcroft des' in green*, 16cm high
£500 - 800

Lot 31

A James Macintyre Florian ware 'Blue Poppy' vase, designed by William Moorcroft, of gourd shape, *printed marks and 'W Moorcroft des' in green*, 13.5cm, and a 'Blue Poppy' vase, of slender form with a bulbous base, *printed marks and 'W Moorcroft des' in green*, restored, 12.5cm high (2)
£300 - 500



31



32

**Lot 32**

A James Macintyre Florian ware 'Blue Poppy' case, designed by William Moorcroft, of slender form, *printed marks and 'W Moorcroft' in green*, restored, 18cm and a MacIntyre 'Poppy' vase, of slender form with green and yellow petals, *printed marks and 'W Moorcroft des' in green*, restored, 17.5cm high (2)
£250 - 350

Lot 33

Four James Macintyre items, two small vases, *printed marks with green 'WM'*, 7.5 and 8cm high, a salt, 4.5cm high, and a cream jug, restored, 7.5cm high (4)
£250 - 350



33



Lot 34

A pair of 'Kardofan' brass chambersticks, designed by Dr Christopher Dresser, each fitted with a wooden handle, stamped 'Dr Dresser's Design' with registration mark for 30th October 1882, on with a 'Perry Son & Co.' label, 13.5cm high (2)
£1,200 - 1,600

**Lot 35**

A silver-plated double bonbon dish, designed by Dr Christopher Dresser, stamped marks, 27cm wide
£200 - 300

**Lot 36**

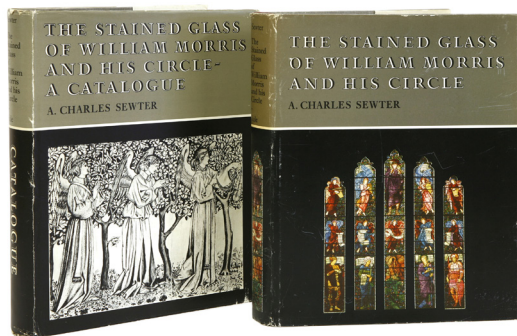
An Arts & Crafts armchair, with turned finials and spindles, with an upholstered seat
£150 - 250

**Lot 37**

An Arts and Crafts lead fountain head, early 20th century, in the manner of Louis Weingartner for the Bromsgrove Guild, in the form of a young boy with his arms outstretched holding a frog, on a rectangular base, recently restored by the Bulbeck Foundry, 66cm wide 93cm high
£1,000 - 1,500

Provenance:
Mallams, 12 December 2012, Lot 251;
originally removed from the garden at New Dovers Court, Chipping Campden, home of Frederick Landseer Griggs.





38

Lot 38**Charles A Sewter,****'The Stained Glass of William Morris and His Circle',**

two volumes, and a typed letter signed by Sewter & addressed to Mr Dufty, dated 14 November, 1970,

'I am most grateful to you for your detailed reply to my enquiry about the Morris drawings at Kelmscott...' (2)

£300 - 500

Arthur Richard Dufty was an architect and antiquary. He was on the Royal Commission on Historical Monuments 1937-73, Master of the Armouries, HM Tower of London 1963-76, CBE 1971, President, Society of Antiquaries 1978-81. He was an authority on Morris and wrote 'An Illustrated Guide to Kelmscott', 1970.

Lot 39**Attributed to Sir Edward Burne-Jones (1833-1898)**

AN ILLUSTRATION FOR A DESIGN OF THE SOUTH SIDE NAVE WINDOW OF ST MICHAEL AND ALL ANGELS WATERFORD HERTFORDSHIRE, DEPICTING THE VIRGIN MARY AND CHRIST WITH A DOVE IN A CIRCLE ABOVE

Watercolour, titled 'Waterford' and inscribed 'Scale 3/4" = 1' and Return to Morris and Co., Merton Abbey, Surrey'

22.5 x 14cm

£1,000 - 1,500

Provenance: With P & D Colnaghi & Co. Ltd.

The window in the Catalogue of Designs, dated 1 February 1918, names the glass painter as follows: figures by Titcomb...backgrounds of draped curtains, close treework and flowers in heads and bases, scrolls and inscription by Watson; Dove in circle drawn by Knight and painted by Watson.

There was a design mentioned in Sewter 'a sketch design, labelled 'Waterford' and showing the figures of Mary Virgin and St John belongs to Mr A. R. Dufty at Kelmscott Manor. It probably represents a first idea for this window'.

The window at Waterford is inscribed: 'in memory of Isabel Smith wife of Robert Smith of Goldings, daughter of H.J. Adeane of Babraham, Cambridge died 16 September 1913'

Literature: A Charles Sewter, 'The Stained Glass of William Morris and his Circle - A Catalogue', Yale University Press, 1975, p.195.



39



40

Lot 40**Morris Marshall Faulkner & Co.**

A SKETCH DESIGN FOR A CHURCH WINDOW, POSSIBLY FOR THE CHANCEL EAST WINDOW FOR ST MICHAEL WATERFORD

Watercolour, inscribed 'Design for stained glass Morris, Marshall, Faulkner & Co 8 Red Lion Sq Wl'

27 x 16cm

£500 - 800

Literature:

A Charles Sewter, 'The Stained Glass of William Morris and his Circle - A Catalogue', Yale University Press, 1975, p.195.

Provenance:

With P & D Colnaghi & Co. Ltd.



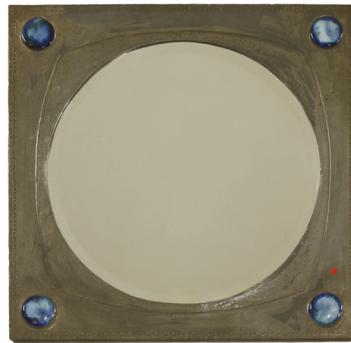
41



42



43



44

Lot 41

A set of six Arts and Crafts oak dining chairs, in the manner of William Birch, each with rush seats, solid backs, turned supports, 110cm high
seat 44cm high
41cm wide (6)
£400 - 600

Lot 42

An Arts & Crafts oak armchair, with paddle arms and open sides on shaped supports
£250 - 350

Lot 43

An octagonal oak lamp table, with a chamfered column on a cruciform stand, labelled 'R.H. Wright maker St Michael's Tenterden', 51.5cm diameter
55cm high
£150 - 200

Lot 44

An Arts and Crafts pewter mirror, inset with cabochons, with a circular plate, 52.5cm square
£150 - 250

Lot 45

An Arts and Crafts mahogany desk, with a pierced three-quarter gallery, a cupboard with a leaded glass door and an hinged desk over a drawer and open shelves, 99cm wide
30cm deep
143.5cm high
£250 - 350



45

Lot 46

An oak reading table, designed by Leonard Wyburd (1865-1958) for Liberty & Co., the sloping top above two undertiers with lattice sides, on turned supports, 59cm wide
34cm deep
82.5cm high, and a Gothic oak dinner gong, with quatrefoil details, with a brass gong and striker, 73cm wide
87cm high (2)
£150 - 250



46



47

Lot 47

A cast iron fireplace, designed by C F A Voysey (1857-1941), and made by the Falkirk Iron Company Ltd., the wide mantel over a frieze cast with three heart motifs, over the open arch grate and baffle, cast 'Falkirk No. 64', 85cm wide 131cm high £4,000 - 6,000



48

Lot 48

A cast iron fireplace, designed by C F A Voysey (1857-1941), and made by the Falkirk Iron Company Ltd., the wide mantel over a frieze cast with three heart motifs, over the open arch grate and baffle, cast 'Falkirk No. 64', 85cm wide 131cm high £4,000 - 6,000



49



50

Lot 49

A Liberty & Co. pewter and enamel desk clock, designed by Archibald Knox, model no. 0721, the copper dial with Roman numerals and with an enamelled blue and green face, the case cast with ivy leaves, with a swing handle and a French brass movement, *the base stamped '0721'*, 12cm high
£800 - 1,200

Lot 50

A Tudric pewter bowl, designed by Oliver Baker for Liberty and Co., of dished form raised on three strap feet, with six cabochons to the edge, *stamped 'Tudric English Pewter Liberty & Co. 011289'*, 21cm diameter
£400 - 600

Lot 51

An Arts and Crafts copper porch lantern, with vaseline glass panels, 41cm high
£200 - 300

Lot 52

Two Liberty & Co. pewter kidney-shaped boxes, each mounted with a turquoise cabochon to domed cover, *stamped '0649 English Pewter Made by Liberty & Co.'*, 8.5cm wide
one 5cm high, the other 10.5cm high (2)
£150 - 250

Lot 53

Two copper and brass teapots, designed by W A S Benson, with integral liners, *stamped 'Benson'*, 10.5cm high (2)
£100 - 150



51



52



53



54

Lot 54

A Hukin & Heath silver-plated and glass claret jug, in the manner of Dr Christopher Dresser, of tapering form with a star cut base, 25cm high
£200 - 300

Lot 55

An Arts & Crafts embossed copper mirror, of rectangular form, each side with raised arrow-topped details and an embossed floral design, with a plain mirror plate, 34cm wide 42cm high
£250 - 350



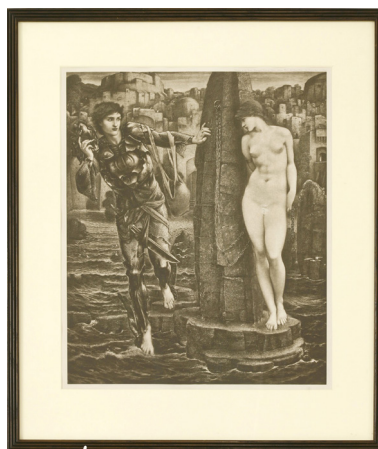
55

Lot 56

Petrus Johannes Arendzen, after Sir Lawrence Alma-Tadema
'ELOQUENT SILENCE'
Engraving signed in pencil, published by Lefevre, July 1st 1891
41 x 34cm
£250 - 350



56



57



58

Lot 57

After Sir Edward Coley Burne-Jones
'THE ROCK OF DOOM'; 'LE CHANT D'AMOUR'
two photogravures, published by the Berlin Photographic Company, c.1900 from a series of ninety-one from an edition of 200,
40.5 x 48cm
48.5 x 35.5cm, both mounted and framed (2)
£300 - 500

Lot 58

Auguste Blanchard, after Sir Lawrence Alma-Tadema
THE VINTAGE FESTIVAL
Engraving, signed in pencil, with blind stamp
94 x 50cm, mounted and framed
£250 - 350

Lot 59

A limed oak stool,
with an upholstered seat,
49cm wide
39cm deep
48.5cm high
£100 - 150

Lot 60

An Arts & Crafts oak
refectory table,
on sledge feet, united with
a plain stretcher,
136cm wide
75cm deep
74cm high
£250 - 350



60

Lot 61

An Heal's oak 'Tilden' table,
designed by Ambrose Heal and
Philip Tilden, the rectangular top
raised on turned columns united
with a plain stretcher, on sledge
feet,
145cm wide
73.5cm deep
75.5cm high
£500 - 700



59



61

Lot 62

A pair of Arts and Crafts laurel
wood console tables,
designed by Montagu C Norman
at Thorpe Lodge and made by
J H Wakelin and joiner Robert
King, adapted from a centre table,
now cut in half and adapted to
form two console tables or radiator
covers, each with two front
drawers, on twelve hexagonal
legs, one drawer labelled, 'Table
in Laurel, Designed by M.C.N. -
Executed Wakelin, Sunningdale
circa 1910',
127cm and 143.5cm wide
47cm deep
80cm high (2)
£300 - 500



62

Montagu C Norman was Governor of the Bank of England from 1920-1944. In 1904 he moved into Thorpe Lodge and began to redesign the interiors.

He employed Walter Knight Shirley as the architect and the principal craftsmen involved were J H Wakelin of Sunningdale, and his joiner Robert King.

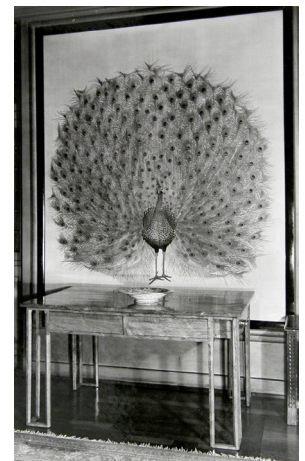
Norman himself designed some of the furniture and metalwork. It is noted that A J Shirley (no relation to the architect) produced much of the metal work for Thorpe Lodge, including firedogs, electric light fittings, radiator grilles and garden gates, to Norman's designs.

Other craftsmen involved with the house were William de Morgan, Henry Wilson, Omar Ramsden and C R Ashbee.

Literature: Sir Gordon Russell 'Banker Designer
A Living Aspect of Montagu Norman'
The Banker, March 1955.



Entrance to Thorpe Lodge



The table shown in the
Peacock Room at Thorpe Lodge



63

Lot 63

An oak reclining armchair,
by Arthur Simpson of Kendal, with paddle arms, with routed details, chamfered front supports, reupholstered calico cushions,
69cm wide
75cm deep
98cm high
seat 50cm high
£400 - 600

Lot 64

An oak bookcase,
by Arthur Simpson of Kendal, with a three-quarter gallery, three shelves over a hinged shelf, an undertier below, *stamped '43'*,
61cm wide
25cm deep
140.5cm high
£350 - 450



64

Lot 65

An oak magazine/pipe rack,
by Arthur Simpson of Kendal, the shaped top with routed scrollwork, the slats and rack inlaid with stylised panels,
32.5cm wide
11cm deep
65cm high
£300 - 500



65

Lot 66

A stained ash ladder back rocking chair,
by Neville Neale, with a rush seat, *stamped to the upright*
£250 - 350



66

ART DECO FURNITURE, OBJECTS AND LIGHTING

67-204



67

Lot 67

An Art Deco cloud suite,
with burr walnut strips to the sides and upholstered
in cream leather comprising:

a three-seater settee,

170cm wide

87cm deep

80cm high, and

two armchairs,

80cm wide

81cm deep

85cm high approximately (3)

£2,500 - 3,500



68

Lot 68

A pair of brown leather chairs,
with button backs and studwork to the edges (2)
£250 - 350

Lot 69

An Art Deco walnut sideboard,
the raised oval central section with three drawers
flanked with cupboards,

170cm wide

54cm deep

115cm high

£250 - 350



69



71

Lot 70

A French Art Deco wrought iron table lamp, with a mottled glass shade, the stand applied with leaves and scrollwork, 35cm high
£200 - 300



70



72



73

Lot 71

An Art Deco fiddle oak grandmother clock, with chrome Arabic numerals, 31cm wide, 170cm high
£400 - 600

A pair of French wrought iron wall lights, attributed to Edouard Schenck, of shaped rectangular form, with a bevelled edge plate surmounted with a crest, flanked with a pair of lights, 45cm wide, 75cm high (2)
£800 - 1,200

Lot 73

An Art Deco walnut display cabinet, of circular form with concave sides, a printed interior with two glass shelves, 117cm wide, 33cm deep, 126cm high
£200 - 400

Lot 74

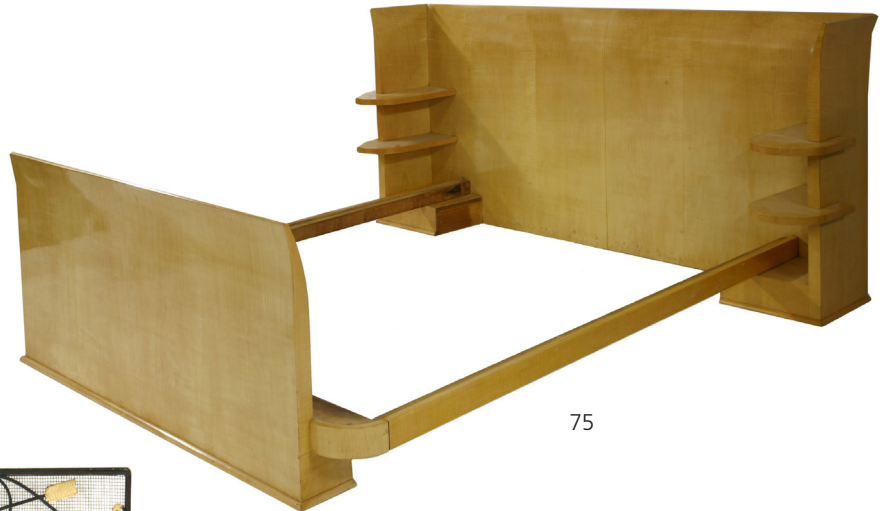
A set of nine Art Deco copper panels, each embossed differently, comprising:
 a bull and a fish 'Ooypia',
 a crab,
 an insect,
 two eagles,
 a sphinx and a vase,
 a hen and chicks,
 a mask 'EA',
 two masks and a fish 'KY',
 a torch, *unsigned*,
 each 41cm square (9)
 £600 - 800



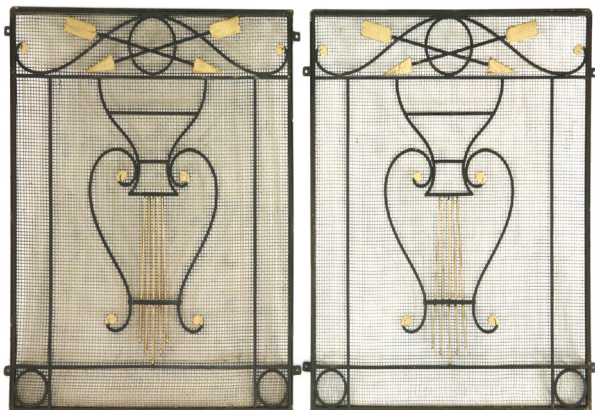
74

Lot 75

An Art Deco maple bed,
 with two intergral shelves each side,
 206.5cm wide
 204cm deep
 90.5cm high
 bed 155cm wide
 195cm deep
 £400 - 600



75



76

Lot 76

A pair of wrought iron panels,
 with a harp design beneath crossed arrows,
 with nine panels,
 66cm wide
 78cm high (2)
 £100 - 150



77

Lot 77

A Goldscheider figure of a girl reading a book, by Claire Weiss (b.1906), no. 6769, incised on the plinth 'Claire Weiss', stamped and printed marks, 20cm high
£600 - 800

Literature: Illustrated in Ora Pinhas, 'Goldscheider, A Catalogue of Selected Models', Richard Dennis, 2006, p.133.

Provenance: The Cranch Collection.

Lot 78

A Goldscheider figure of a girl and a bunny rabbit, no. 7201, stamped and printed marks, 21.5cm high
£400 - 600

Provenance: The Cranch Collection

Lot 79

A Goldscheider figure of a woman sitting in a boat with a terrier, by Stephan Dakon, no. 7256, stamped and printed marks, restored and damages, 36.5cm wide
£400 - 600

Literature: Illustrated in Ora Pinhas, 'Goldscheider, A Catalogue of Selected Models', Richard Dennis, 2006, p.137.

Provenance: The Cranch Collection



80

Lot 80

A Goldscheider figure of a woman holding a hat box and standing with two suitcases, by Josef Lorenz, no. 7064, incised facsimile signature, stamped and printed marks, 27cm high
£1,000 - 1,500

Literature: For a similar example see Ora Pinhas, 'Goldscheider, A Catalogue of Selected Models', Richard Dennis, 2006, p.133.

Provenance: The Cranch Collection.

Lot 81

A Goldscheider figure of a kneeling nude, no. 8253, with remnants of original label, stamped and printed marks, restored, 23.5cm high
£150 - 200

Literature: Illustrated in Ora Pinhas, 'Goldscheider, A Catalogue of Selected Models', Richard Dennis, 2006, p.143.

Provenance: The Cranch Collection.



78



79



81



82

Lot 82

A Goldscheider figure of a ice skater, by Stephan Dakon, no. 7849, *incised on plinth 'Dakon', with original silver label, stamped and printed marks*, 27.5cm high
£800 - 1,200

Literature: Illustrated in Ora Pinhas, 'Goldscheider, A Catalogue of Selected Models', Richard Dennis, 2006, p.128.

Provenance: The Cranch Collection.

Lot 83

A Goldscheider figure of a couple ballroom dancing, by Stephan Dakon, no. 7059, *stamped and printed marks*, 30.5cm high
£1,000 - 1,500

Literature: Illustrated in Ora Pinhas, 'Goldscheider, A Catalogue of Selected Models', Richard Dennis, 2006, p.140.

Provenance: The Cranch Collection.



85



84

Lot 84

A Goldscheider figure of a dancer, no. 6399, *stamped and printed marks*, 29cm high
£600 - 800

Literature: For a similar example, see Ora Pinhas, 'Goldscheider, A Catalogue of Selected Models', p.155.

Provenance: The Cranch Collection.

Lot 85

A Goldscheider figure 'Swan Lake', by Stephan Dakon, no. 6361, *stamped and printed marks*, 27cm wide
£400 - 600

Literature: Illustrated in Ora Pinhas, 'Goldscheider, A Catalogue of Selected Models', Richard Dennis, 2006, p.137.

Provenance: The Cranch Collection.



83

Lot 86

A Goldscheider figure of a lady in a blue dress, by Stephan Dakon, no. 7257, *stamped and printed marks*, 31cm high
£300 - 500

Provenance: The Cranch Collection.



86



87

Lot 87

A Goldscheider figure of a dancer, by Stephan Dakon, no. 7857, with remnants of original label, *stamped and printed marks*, 40cm high
£800 - 1,200

Literature: For a similar example, see Ora Pinhas 'Goldscheider, A Catalogue of Selected Models' p.148.

Provenance: The Cranch Collection.

Lot 88

A Goldscheider figure of a dancer, by Stephan Dakon, no. 8126, *stamped 'L' and printed marks*, 39cm high
£800 - 1,200

Provenance: The Cranch Collection.



88



89

Lot 89

A Goldscheider figure of a butterfly girl, by Sailor, no. 5840, *stamped and printed marks, extensively restored*, 49cm high
£1,500 - 2,000

Provenance: 'The Barbra Streisand Collection of Decorative and Fine Arts and Memorabilia', Part II, 4 March 1994, Christie's; The Cranch Collection.

Literature: For a similar example see Ora Pinhas, 'Goldscheider, A Catalogue of Selected Models', Illustrated p.122.



90

Lot 90

A Goldscheider figure of a dancer, probably by Stephan Dakon, No. 8129, on a domed plinth, *stamped and printed marks*, 33cm high
£300 - 500

Provenance: The Cranch Collection.

Lot 91

A Goldscheider figure, by Claire Weiss, modelled with a lady holding a muff, *now mounted on a lamp base*, 64cm high
£300 - 500

Literature: For a similar example, see Ora Pinhas, 'Goldscheider, A Catalogue of Selected Models', Richard Dennis, 2006, p.147.

Provenance: The Cranch Collection.



91

Lot 92

A rare Goldscheider figure of a dancer, no. 8746, stamped and with 'Wiener Manufaktur J. Schuster' printed mark, 39.5cm high
£800 - 1,200

Literature:

For a similar example, see Ora Pinhas, 'Goldscheider, A Catalogue of Selected Models', Richard Dennis, 2006, p.163.

Provenance:

The Cranch Collection.



92

Lot 93

A Goldscheider figure of a dancer, no. 8713, stamped and printed marks, with 'L. Ostermayr Nürnberg', 42.5cm high
£500 - 700

Provenance:

The Cranch Collection.



93

Lot 94

A Goldscheider craft pottery figure of a girl holding an umbrella, possibly modelled by Kurt Goebel, no. 7845, stamped and printed marks, 26cm high
£400 - 600

Literature:

Illustrated in Ora Pinhas, 'Goldscheider, A Catalogue of Selected Models', Richard Dennis, 2006, p.177.

Provenance:

The Cranch Collection.



94

Lot 95

A Lenci figure group 'Giovinezza', possibly by Sandro Vacchetti, no.442, modelled as a couple seated on a bench, inscribed 'Lenci Torino 4 (XII) made in Italy TK', 19.5cm wide
£3,000 - 5,000

Literature:

For a similar model, see Alfonso Panzetta 'Le Ceramiche Lenci - Catalogo Dell' Archivio Storico 1928-1964', Umberto Allemandi & C., 2003, pl.520, p.191.

Provenance:

The Cranch Collection.



95



96



97



98

Lot 96

A Goldscheider wall mask,
by Stephan Dakon, no. 7412, modelled
as a girl wearing a tartan beret and scarf,
incised and printed marks,
25cm high
£150 - 200

Provenance: The Cranch Collection.

Lot 97

A Goldscheider wall mask,
by Stephan Dakon, no. 7412, modelled as
a girl wearing a beret and a spotty scarf,
stamped and printed marks, restored,
25cm high
£150 - 200

Provenance: The Cranch Collection.

Lot 98

A Goldscheider wall mask,
of a lady holding a cup, wearing a
turquoise top, *faint printed mark*,
22cm high
£150 - 200

Provenance: The Cranch Collection.

Lot 99

A Czechoslovakian wall mask,
no. 1172, modelled as a lady wearing a beret,
printed and moulded marks,
25cm high
£100 - 150

Provenance: The Cranch Collection.

Lot 100

A Czechoslovakian double wall mask,
no. 15187, modelled as a cup between two faces,
printed and moulded mark,
30cm high
£150 - 300

Provenance: The Cranch Collection.

Lot 101

Two Czechoslovakian amusing wall masks,
nos. 15171 and 15178, *numbered in the mould*,
17 and 20cm high (2)
£150 - 200

Provenance: The Cranch Collection.



99



100



101

Lot 102

A Keramos Pottery wall mask,
designed by Stephan Dakon, no. 2058,
stamped and printed 'Keramos Wien',
32.5cm high
£300 - 500

Provenance: The Cranch Collection.

Lot 103

A terracotta pottery wall mask,
with glazed brown hair and green top,
stamped marks 525,
33cm high
£250 - 300

Provenance: The Cranch Collection.

Lot 104

Two Goldscheider pottery wall masks,
nos. 7409 and 7291, of young girls,
stamped incised and printed marks,
23cm high (2)
£200 - 300

Provenance: The Cranch Collection.



102



103



104



105

Lot 105

Two Goldscheider pottery wall masks,
no. 3625 and another unmarked, *one*
stamped, both with printed marks,
24cm high (2)
£150 - 200

Provenance: The Cranch Collection.

Lot 106A

A Lenci 'A Teatro' figure,
the model designed by Helen Konig Scavini, 'A Teatro',
inscribed 'Lenci torino made in Italy' and with a flower
possibly for Giovanni Ronzan,
30cm high
£600 - 800

Lot 106

Two Royal Doulton figures 'Scotties' and
'The Bather',
HN 1281 and HN 687, *printed and inscribed*
with titles, both restored,
14 and 19.5cm high (2)
£200 - 400

Provenance: The Cranch Collection.



106



106A



107



108



109



110



111

Lot 107

A Wedgwood Fairyland lustre 'Firbolgs IV' bowl, c. 1920, the centre decorated with a scene of a lady beside a lake, printed marks and gilt 'Portland Vase' mark and inscribed 'Z5200', 26.5cm diameter
£200 - 300

Lot 108

An Art Deco table lamp, with a glass globe shade, chrome mounts and a reeded Bakelite column, 42cm high
£150 - 200

Lot 109

A 'Ringling Bros and Barnum & Bailey Circus' poster, dated 1943, a lithographic poster with a separate sheet for 'Oklahoma City Monday 9 and Tuesday 10 September', both now canvas backed, 75 x 79cm (2)
£200 - 300

Lot 110

A pair of Italian wrought iron 'birdcage' lanterns, each of hexagonal form, with three lights, lacking glass, 80cm high 50cm diameter (2)
£300 - 500

Lot 111

A French wrought iron wall mirror, the arched panelled frame with flowers and scrollwork, 105cm wide 76cm high
£300 - 500



112

Lot 112

A French Art Deco burr walnut and marble dining suite,

comprising:

a dining table,

the marble top raised on a 'U' shaped stand, with ebonised and chrome details, extending wood ends, 170cm long, 266cm extended 100cm deep

73cm high,

a sideboard,

the Portoro marble top over a raised central section with five drawers flanked with cupboards, 'D' shaped cupboards to the sides, raised on an ebonised and chrome plinth,

220cm wide

55cm deep

100cm high,

a drinks cabinet,

centred with a glazed cupboard enclosing two glass shelves, flanked with 'D' shaped cupboards and raised on an ebonised and chrome plinth, 110cm wide

41cm deep

110cm high, and

six chairs,

with shaped backs, cream leather seats and ebonised legs, and

a further four matched chairs (13)

£2,500 - 3,000



113

Lot 113

A pair of Art Deco walnut cabinets,

75cm wide

61cm high, and

an Art Deco walnut side cabinet,

with four drawers over six doors,

121cm wide

37cm deep

86cm high (3)

£250 - 350

Lot 114

An Art Deco burr maple and walnut dressing table,

with a bevelled circular mirror over a single drawer,

69cm wide

43cm deep

127cm high

£250 - 300



114



115

Lot 115

Four Christofle dinanderie copper and silvered trays, longest 43.5cm, and a pot and cover, 18.5cm diameter all with stamped marks (6)
£200 - 300

Lot 116

An Art Deco-style silver-plated four-piece tea set, with wood finials and handles, indistinct marks 15cm high, and with a matching tray, 58cm wide (5)
£150 - 200



116



117

Lot 117

A silver-plated four-piece tea set, 1940s, each body using a shell case of either a 6, 12 or 20-pounder shell (4)
£100 - 150

Lot 118

An Italian circular glass wall mirror, with cut sunbursts to the frame, some prunts missing, 64cm diameter
£150 - 200



118

Lot 119

An Art Deco maple and walnut side table, centred with a drawer and cupboard enclosing record divisions, with shelves to both sides, 61cm wide 45.5cm deep 52cm high, and a walnut side table, 60cm diameter 58.5cm high (2)
£200 - 300

Lot 120

An Italian wrought iron and glass coffee table, c.1940s, the rectangular top with canted corners, with silvered and gold details, nailed on a painted wrought iron stand, 102cm wide 53cm deep 56cm high
£200 - 400



119



120



121



122

Lot 121
An Art Deco bird's-eye maple dressing table, with an arrangement of two drawers, a cupboard to the side with bevelled triptych mirror, 139cm wide 45cm deep 150cm high £300 - 500

Lot 122
An Art Deco walnut and faux rosewood dining table, the black glass top over a carved frame, raised on a pair of tapering pedestals, the bases with reeded moulding, 185cm wide 93.5cm deep 77cm high £400 - 600



123



124

Lot 123
An Italian multiplate mirror, with an etched shaped frame, 63cm wide 84cm high £200 - 300

Lot 124
A pair of Art Deco cream leather armchairs, with stitched fan-shaped backs, tan piping, reupholstered, 90cm wide 90cm deep 90cm high seat 29cm high (2) £600 - 800

Lot 125
An Art Deco burr maple bed frame, with a reupholstered cream leather headboard and footboard, 152cm wide 210cm long headboard 115cm high footboard 77cm high base approximately 143 x 195cm £500 - 700

Lot 126
Four Art Deco maple dining chairs, with striped turquoise upholstered back and seat, labelled 'Heinrich C Wolbrandt, Möbelfabrik Hamburg', 45cm wide 53cm deep 97cm high seat 46cm high (4) £200 - 300



125



126



127

Lot 127

An Art Deco walnut Strohmenger baby grand piano, no. 19902, gilt labelled, cast registration no. 777260, 136cm wide 124cm deep 94cm high, and a matched duet stool, 93cm wide (2) £1,000 - 1,500

Lot 128

An Art Deco-style walnut and ebonised table, with banded strung inlay raised on two stepped supports, 278cm wide 79cm deep 73cm high £300 - 500



128



129

Lot 129

A set of four Art Deco burr maple dining chairs, each with a veneered barrel back, with scrolled veneer and dot detailing, raised on outswept legs, with original cream upholstery each 50cm wide 62cm deep back 82.5cm high seat 50cm high (4) £300 - 500

Lot 130

An Art Deco inlaid burr maple coffee table, the circular top with two horizontal veneered bands, on a cylindrical column and plinth, 61.5cm diameter 60cm high £250 - 350

Lot 132

A Gordon Russell cherry cupboard, 1929, design no. 192, with box and walnut inlaid chequer details, cedar lined, with eight front panels, cupboards each side, *labelled inside left cupboard, 'Cabinet maker I Driessche, date August 20th 1929'*, 92cm wide 49cm deep 86cm high £600 - 800

Lot 131

An Art Deco gilt figure of a dancer, by Josef Lorenzl (1892-1950), *signed*, on an onyx plinth, 20cm high £300 - 500

This piece was part of a bedroom suite of furniture commissioned by the Ansell family in 1929.

Lot 133

A pair of Art Deco marble and wrought iron console tables, of demilune form, the stands painted with scrollwork and intertwined flowers, 80cm wide 35cm deep 85cm high (2) £250 - 350



130



132



131



133



134



135

Lot 134

J R Newell (20th century)
FAUVIST LANDSCAPE
Signed l.r., oil on board
50 x 65cm, famed
£400 - 600

Lot 135

J R Newell (20th century)
FAUVIST LANDSCAPE
Signed l.r., oil on board
50 x 65cm, framed
£300 - 500

Lot 136

A pair of Art Deco satin walnut tables, each with scrolled ends on out-tapering supports, 54cm wide 38cm deep 48cm high, and a three-tier stand, 57cm wide 39.5cm deep 85cm high (3)
£200 - 300

Lot 137

A pair of Art Deco burr walnut and maple uplighters, each with copper dishes raised on octagonal columns, on square cruciform plinths, 186cm high 46.5cm diameter (2)
£600 - 1,000

Lot 138

An Art Deco burr walnut and maple dining table, of octagonal form with a radiating veneered top, centred with a glass panel, fitted with four lights, on a double column stand with a shaped plinth, 128cm diameter 73cm high, and a set of six matching dining chairs, each with a walnut veneered band and original vermiculated sage green upholstery (7)
£600 - 800



136



137



138



139

Lot 139

A French Art Deco table lamp, with a frosted glass shade, mounted on a cast plinth, 45cm high
£200 - 300



140

Lot 140

A silvered figural table lamp, after Max Le Verrier, inscribed, modelled as a nude holding aloft a globe, with mottled glass on a stepped marble plinth, 65cm high
£400 - 600



141

Lot 141

An Art Deco cast lamp, with a moulded glass shade on a brass and silvered cast stand, 57cm high
£300 - 500



142

Lot 142

A pair of Art Deco ceiling lights, with brown Bakelite fittings, chrome tubes, and white glass shades, 93cm high (2)
£200 - 300

Lot 143

An Art Deco-style figural table lamp, modelled as a fan dancer after Guerne, the plastic shade a fan, on a stepped marble plinth, *with signature*, 50cm high
£250 - 350

Lot 144

Two Art Deco-style items, a cold painted ashtray, 16.5cm high, and a centrepiece figure, *inscribed Janle*, on a marble plinth, 30cm high (2)
£150 - 250



143



144





145

Lot 145
A silver and enamelled ashtray, the conical bowl enamelled in green, white and brown, the outer with a powdered finish, with cabochons to the edge, 20cm diameter
£150 - 200



146

Lot 146
A Tudric pewter desk clock, with a square dial, inscribed 'Bayard', on a leaf and fruit stand, stamped 'BCM/Tudric 01825A', a pewter twin-handled comport, 40cm long, and a circular mirror (3)
£150 - 250



147

Lot 147
An Art Deco mirrored occasional table, the pink-tinted top raised on a faux Macassar and veneered 'X' frame stand united with a plinth, 64cm diameter, 47.5cm high
£200 - 300



148

Lot 148
A Secessionist brass-mounted lamp table, with a faux shagreen surface, over double columns and ball supports, united on a plinth, 38cm diameter, 69cm high
£200 - 300

Lot 149
An Art Deco copper and mirrored mosaic standard lamp, 169cm high
£100 - 150

Lot 150
A French Art Deco glass vase, of conical form with etched panels, etched 'A Delatte Nancy', 16cm high
£100 - 150



150



151

Lot 151
A...Robert
A NUDE ON A BED
Signed l.r., oil on canvas
100 x 50cm, framed
£200 - 300



149



152



153



154



155

Lot 152

A pair of Art Deco ceiling lights, with brown Bakelite fittings, chrome tubes, and white glass shades, 93cm high (2)
£200 - 300

Lot 153

An Art Deco walnut three-piece suite, with brown suede upholstery and brown piping, settee 173cm wide (3)
£1,500 - 2,500

Lot 154

A pair of beechwood and green leather armchairs, 57cm wide (2)
£200 - 300

Lot 155

A French rosewood desk, attributed to Guérin Frères with three drawers, stamped 'Guerin Freres Faubourg St Antoine Paris', 135cm wide
74cm deep
75cm high
£300 - 500

Lot 156

A pair of wrought iron standard lamps, in the style of Edgar Brandt (2)
£400 - 600

Lot 157

A French earthenware vase, by Louis Dage (1885-1963), of squat form with an orange glaze and a mottled white glaze, signed 'L. Dage and 'Val', with patinated and silvered brass mounts with leaves and fruit, 24.5cm diameter
9.5cm wide
£250 - 350

Lot 158

A Boch Frères octagonal pottery vase, with a silvered cast mount, printed mark, 21cm diameter
16.5cm high
£250 - 350



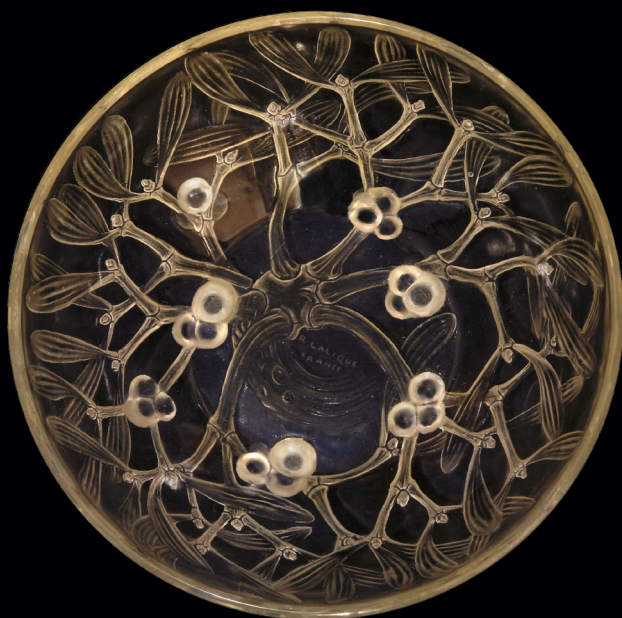
157



158



156



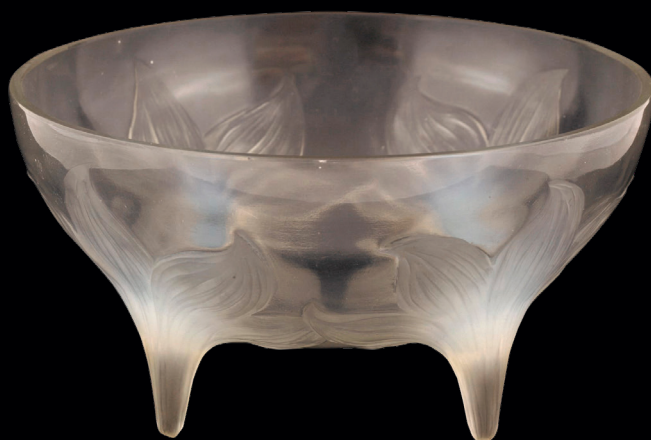
159

Lot 159
A Lalique 'Gui' glass bowl,
the moulded design, wheel cut 'R Lalique France'
and etched No. '3225',
20.5cm diameter
£200 - 300

Lot 160
A Lalique 'Chicoree' opalescent glass bowl,
with a moulded pattern, moulded
'R Lalique France' and etched 'N.3213',
24cm diameter
£150 - 200



160



161

Lot 161
A Lalique 'Lys' bowl,
moulded with opalescence flowers forming at the feet,
wheelcut 'R Lalique France' and etched 'No.382',
24cm diameter
£300 - 500



162



163



164



165

Lot 162

An Art Deco walnut writing table, with a black leather top, tooled with a gilt Greek key banding, over two drawers, *labelled 'Hamptons Pall Mall London'*, the side supports united with a flat stretcher, 95cm wide 53.5cm deep 76.5cm high
£750 - 950

Lot 163

An Art Deco walnut circular occasional table, raised on splayed ebonised supports with a circular undertier, *labelled*, 63cm diameter
£150 - 250

Lot 164

An Edwardian inlaid mahogany writing table, with a green leather top and gilt banding, over five drawers, *stamped*, 114.5cm wide 60cm deep 76cm high
£300 - 500

Lot 165

An Art Deco cream leather three-piece suite, with walnut and oak details, with green piping, settee 145cm wide armchair 92cm wide (3)
£1,500 - 2,000

Lot 166

An Art Deco limed oak dressing table, attributed to Ernest Gomme, the triptych mirrors flanked with integral candle lights, over a barrel-shaped base with a single drawer, flanked with carved panels, 74cm wide 50cm deep 125cm high (2)
£200 - 300

Lot 167

A pair of Art Deco walnut bedside chests, each with a shelf over a cupboard, 50cm wide 35cm deep 58.5cm high (2)
£300 - 500



167



166



168



169



170



172

Lot 168

A walnut octagonal book table,
on raised cabriole legs,
46cm high
50.5cm diameter
£200 - 300

Lot 169

An Art Deco walnut console table,
with a shaped stretcher,
71cm wide
36cm deep
69.5cm high
£100 - 200

Lot 170

An Art Deco walnut display cabinet,
of rectangular form, raised on a 'U' shaped
stand, with scrolled sections,
109.5cm wide
28.5cm deep
128cm high
£200 - 300

Lot 171

A pair of oak console tables,
in the style of Jean Royère, with lattice fronts,
and marble tops,
192cm wide
22cm deep
85cm high (2)
£1,500 - 2,000

Lot 172

Willi Soukop (1907-1995)
a terracotta portrait bust of a lady,
signed 'Willi Soukop 1943-44',
31.5cm high
£400 - 600



171



Lot 173

A French sycamore centre table,
c. 1934, by André Arbus, the rectangular top with rounded
ends, the legs carved with masks by Vadim Androusov,
branded to the inside of one leg,

179.5cm wide

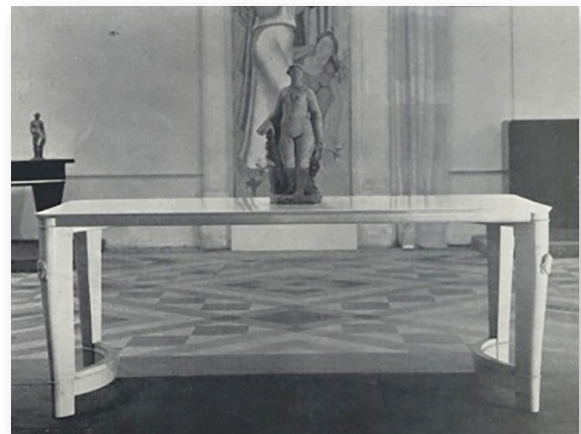
79.5cm deep

72cm high

£20,000 - 30,000

This table was conceived in 1934 by André Arbus for the
Prix Blumenthal.

See Yvonne Brunhammer, '*André Arbus*', Paris, 1996 for
a contemporary photograph with the table illustrated.



Illustrated in 'Mobilier et décoration' 1934



174

Lot 174

An Art Deco painted terracotta figure of a lady and a dove, by George Maxim, *impressed signature*, 61cm long
£200 - 300

Lot 175

A French oak suite, by R Bouillet, Vincennes, comprising a long bench and three armchairs, each piece with solid backs and seats, and ring turned supports, *labelled*, 243cm wide
65cm deep
91cm high
74cm wide
65cm deep
90cm high (4)
£1,500 - 2,000



175

Lot 176

An etched glass mirror plate, 1930s, pink tinted, with a helter-skelter and rollercoaster, with figures to the lower part, 44cm wide
123.5cm high
£150 - 200

Lot 177

A pair of French ebonised standard lamps, 188cm high, *with loaded plinths (2)*
£200 - 300

Lot 178

An Art Deco wall cabinet, with canted corners, the top section with three etched panels, illuminated, the interior mirrored with three glass shelves, 62cm wide
15cm deep
121cm high
£400 - 600



176



177



178

Lot 179

A French wrought iron standard lamp,
with eight lights, on wire branches,
with coloured beads,
149cm high
£300 - 500



179

Lot 180

A pair of wrought iron console tables,
with limed oak tops,
90cm wide
20cm deep
78cm high (2)
£400 - 600



180

Lot 181

A French centre table,
the oval marble top raised
on a maple stand,
134cm wide
90cm deep
74cm high
£1,000 - 1,500



181

Lot 182

Four French iron panels,
each with stylised designs,
largest 65 x 105cm (4)
£200 - 300

Lot 183

A pair of pierced bronze doors,
attributed to Raymond Subes,
each panel with an interlinking vase
design, mounted within a frame,
109 x 109cm (2)
£200 - 300



182



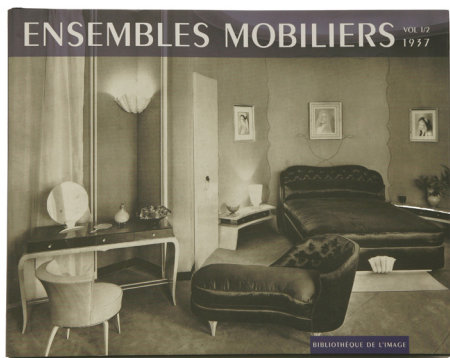
183



184



186



187



188



189



185

Lot 184

An oak refectory table,
the rectangular top over shaped supports,
united with a stretcher,
198.5cm wide
88.5cm deep
73cm high
£450 - 550

Lot 185

An Art Deco walnut chest,
with six graduated drawers,
92cm wide
45.5cm deep
117cm high
£600 - 800

Lot 186

A pair of Art Deco walnut elbow chairs,
each with black leather backs and seats,
53.5cm wide
54cm deep
86cm high (2)
£250 - 350

Lot 187

'Ensembles Mobiliers',
1937-1960, Volumes 1-18,
Bibliothèque de l'Image, 2005 (18)
£100 - 200

Lot 188

A Rolls Royce 'Spirit of Ecstasy' car mascot,
after Chris Robinson Sykes (1875-1950),
stamped 'R.R. Ltd 6.2.11',
19cm high
£300 - 500

Lot 189

A Danish banana settee,
152cm wide
72cm deep
75cm high
£200 - 300



190



191



192



193



195

Lot 190

A pair of Art Deco tank armchairs, each with wide walnut veneered arms, cylindrical stands to the front, *reupholstered*, 113cm wide 97cm deep 81cm high (2) £1,500 - 2,000

Lot 191

An Art Deco walnut and bird's-eye maple nest of tables, the shaped circular top enclosing four quarter tables, 76cm diameter 56.5cm high £200 - 300

Lot 192

An Italian wall mirror, of shield shape design, 46cm wide 68cm high £100 - 150



194

Lot 193

A chrome side table, with a glass top and an undertier, 60.5cm diameter 68.5cm high £100 - 150

Lot 194

A pair of Art Deco-style ebonised armchairs, with black upholstery, 67cm wide 74cm deep 72cm high seat 39cm high (2) £300 - 500

Lot 195

A chrome side table, with a bevelled glass top, 61cm square 54cm high £150 - 200





197

Lot 196

After Peter Tereszczuk (1875-1963), a bronze and ivory figure of a young boy in a clown's costume, standing with his arms folded on a square base, *signed to the plinth*, 12.5cm high
£250 - 350

Lot 197

After Peter Tereszczuk (1875-1963), a gilt bronze ivory erotic figure, in the form of two young girls, modestly dressed, leaning against a fence, but their skirts opening to reveal they are wearing no undergarments, *signed to the side of the plinth and with 'TU' foundry mark*, 14cm high
£350 - 450



196



198



199



200



202



201

**Lot 198**

A pair of Art Deco walnut and sycamore bedside cupboards, each with parquetry fronts opening to reveal a shelf, with cylindrical handles, 35cm wide 33cm deep 74.5cm high (2)
£350 - 450

Lot 199

An Art Deco marble mantel clock garniture, the square dial enclosing an eight-day movement, with blind fretwork panels and spelter birds either side, 50cm wide 27cm high vases 21cm high (3)
£150 - 200

Lot 200

An Art Deco walnut chest of drawers, with six drawers with horizontal cylindrical handles, 83cm wide 46cm deep 117cm high
£300 - 500

Lot 201

An Art Deco cloud suite, each piece with cream leather upholstery, with walnut strips, comprising: a pair of armchairs, 76cm wide 85cm deep 80cm high seat 42cm high, a settee, 166cm wide 95cm deep 82cm high seat 42cm high, another pair of armchairs, with integral seats 68cm wide 75cm deep 82cm high seat 42cm high, and a pouffe, 65cm wide 40cm deep 36cm high (6)
£2,000 - 3,000

Lot 202

An Art Deco walnut chest of drawers, with two short and three long drawers, 91cm wide 54.5cm deep 110cm high
£300 - 500

Lot 203

An Art Deco maple nest of tables, 57cm wide 40cm deep 48cm high (3)
£450 - 550

Lot 204

An Art Deco walnut three-tier trolley, 82cm wide 75.5cm deep 42.5cm high
£200 - 300



203



204

MODERN FURNITURE AND DESIGN

205-609



205



206

Lot 205

*Three John Leach Muchelney Pottery vases, each of ovoid form with incised details to either the body or the shoulders, stamped 'Muchelney' 27.5cm high (3)
£150 - 250



207



208



209



Lot 206

*Colin Pearson (1923-2007), a stoneware winged vase, 20.5cm high, a stoneware vessel, 25cm high, a square dish, 28.5cm wide, and a small part-glazed pot, with lug handles, 13.5cm diameter (4)
£200 - 300

Lot 207

*Gilda Westermann (German, b.1963), a tall white glazed jug, with an incised detail, 25cm high
£100 - 150

Lot 208

*Walter Vivian Cole (1913-1999), a large glazed charger, painted with initials 'WVC', 42.5cm diameter
£150 - 250

Lot 209

*Walter Vivian Cole (1913-1999), two white glazed chargers, with turquoise brush strokes, painted with initials 'WVC', 42.5cm diameter (2)
£100 - 150



210

Lot 210

A collection of Studio ceramics, a glazed teapot, by Ursula Wachter, with a bamboo handle, 24cm high, four lidded Leach Pottery soup bowls and covers, two ladles, two graduated pourers, a vase, an octagonal dish, two beakers, with handles, a beaker, and a dish, largest, 25cm high (15)
£100 - 200



211



212

213



214



215

Lot 211

*Alan Spencer-Green (1932-2003), a porcelain bowl, of shallow form with bat details in purple, 16cm diameter, and a stem cup, 12cm diameter, both inscribed with initials (2)
£200 - 300

Lot 212

*Alan Spencer-Green (1932-2003), a porcelain bowl, with yellow glaze, incised with a band of dragons, inscribed with initials, 17.5cm diameter
£150 - 250

Lot 213

*Alan Spencer-Green (1932-2003), a porcelain stem cup, with a yellow glaze, 14.5cm diameter, a bowl, 14cm diameter, and a further bowl, 18.5cm diameter, all incised with initials (3)
£200 - 300

Lot 214

*Alan Spencer-Green (1932-2003), three porcelain bowls, each with green mottled glazes, 10.8, 13 and 14.7cm diameter (3)
£200 - 300

Lot 215

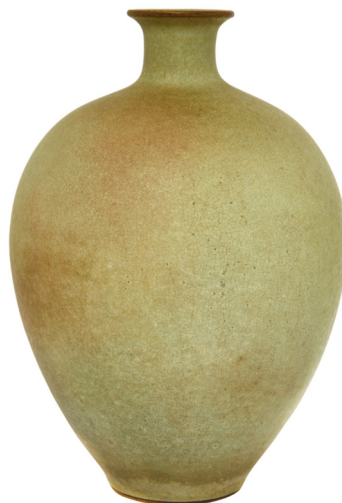
*Alan Spencer-Green (1932-2003), three stoneware bowls, with duck-egg blue glazes, incised with initials, 12.5, 13 and 14cm diameter (3)
£250 - 350

Lot 216

*Alan Spencer-Green (1932-2003), a stoneware green and mauve glazed vase, incised with initials, 27cm high
£300 - 500

Lot 217

*Alan Spencer-Green (1932-2003), a stoneware vase, with a chocolate brown glaze, incised with faint initials, 24cm high
£300 - 500



216



217

Lot 218

*Alan Spencer-Green (1932-2003),
a meiping vase, in a cream glaze,
unsigned,
29.5cm high
£300 - 500



218

Lot 219

*Alan Spencer-Green (1932-2003),
a porcelain bowl, the inside incised
with leaves, *unsigned*,
17.8cm diameter
£100 - 150



219



220



221

Lot 220

*Alan Spencer-Green (1932-2003),
a matt glazed pot and cover, *incised
with initials*,
18cm high (2)
£250 - 350

Lot 221

*Alan Spencer-Green (1932-2003),
a black glazed bowl, *incised with
initials*,
26cm diameter
£250 - 300

Lot 222

*Alan Spencer-Green (1932-2003),
a stoneware vase, with a duck-egg glaze,
incised with initials,
21cm high
£200 - 300



222

Lot 223

*Alan Spencer-Green (1932-2003),
a stoneware vase, with a yellow glaze,
25.5cm high
£300 - 500



223



224

Lot 224

A Beswick 'Circus' tea set, comprising:
six cups,
six saucers,
six plates,
a milk jug,
sugar bowl, and
a sandwich plate,
printed marks (21)
£100 - 150

Lot 225

A 'Canne' bottle vase,
35cm high
£250 - 350

Lot 226

Two green glass 'Gulvase'
bottle decanters and ball stoppers,
in the style of Holmegaard,
39cm high (4)
£150 - 250

Lot 227

A Tapio Wirkkala glass
'Ice Bark' vase,
no. 3429, *signed to the*
underside,
24cm high
£80 - 120

Lot 228

A Flygsfors glass vase,
etched mark,
44cm high
£120 - 150



225



226



227



228



229



232



233



234



230



231



235



236

Lot 229

A 2016 Gibson Les Paul 60s Tribute guitar, serial number 160#####5, with tobacco sunburst finish, fitted with P90 pickups, together with a shaped hard case (2)
£400 - 600

Lot 230

A 1979 Marshall JMP Mk2 Master Model 100w lead guitar amplifier, serial number SL/A 03695L
£600 - 800

This item has passed its Portable Appliance Test and appears to be in working order.

Lot 231

A 1968 Vox AC30 Top Boost guitar amplifier, serial number 7411D1372, original speakers, possibly with a replaced footswitch
£1,000 - 1,500

This item has passed its Portable Appliance Test and appears to be in working order.

Lot 232

A 2004 Gibson SG Classic guitar, made in the USA, serial number 0***4**2 with P90 pickups, complete with hard case
£500 - 700

Lot 233

A 2013 Jackson Adrian Smith Signature model San Dimas Dinky guitar, serial number 0***2, of Stratocaster form in a gold finish with black hardware, complete with Allen key, tremolo arm and fitted hard case
£700 - 900

Adrian Smith is one of the guitarists with the band Iron Maiden and has used this style of guitar since the 1980s.

Lot 234

A luthier built Fender Stratocaster-style electric guitar, the metallic orange body fitted with Charvel SoCal electrics including Seymour Duncan 'Distortion' pickups, complete in a G&G hard case and with a strap
£400 - 600

This guitar was constructed from Warmoth parts by the renowned luthier Andrew Guyton.

Lot 235

A Dr Z Maz 38-Watt 'Senior' guitar amplifier head, a first edition model with reverb and a black tolex finish, complete with a padded cover
£700 - 900

Lot 236

A Victory V40 'The Duchess' guitar amplifier head, with original padded carry case and footswitch for reverb
£400 - 600

Lot 237

A 2017 Fender Custom Shop '61 Relic Stratocaster, serial number R####6, complete with all paperwork and tags and G&G vintage flight case
£1,500 - 2,500

Lot 238

A Danelectro DC59 12 string semi-acoustic guitar, in a black finish with white pickguard, complete with padded carry bag
£200 - 400

Lot 239

A Luthier built B-bender Fender style Telecaster, with a Hipshot 'String Bender' mechanism and an Asher Guitars tortoiseshell pickguard
£400 - 600

Lot 240

An Analogman 'King of Tone' guitar overdrive effects pedal, serial number 1##2
£100 - 150

Lot 241

A Waza Craft Boss Chorus CE-2w guitar effects pedal, together with a Catalinbread Galileo overdrive pedal, a Boss Digital Delay DD-2, and a Fender Mirror Image Delay pedal (4)
£250 - 350

Lot 242

A Pro-Co Rat distortion guitar effects pedal, together with a Wampler Plexi-Drive, an Origin Effects Cali 76 Compact Deluxe, and an MXR Phase 90 phaser pedal (4)
£250 - 350

Lot 243

A Fulltone Plim Soul distortion guitar effects pedal, together with a Crowther Hotcake distortion pedal, a Wampler Pinnacle deluxe pedal, and a Korg Pitchblack tuner (4)
£250 - 350



237



238



239



240



241



242



243



244



245

Lot 244 S
A rosewood 'Royal System', 1970s, designed by Poul Cadovius, comprising four cupboards, two with sliding cupboard fronts, seventeen various shelves: thirteen 80 x 22cm, two 60 x 30cm, one 80 x 46cm and one 80 x 35cm, and thirty-six brackets, with back board panels 250cm high x 80cm wide
£1,000 - 1,500

Lot 245 S
A set of six rosewood dining chairs, designed by Arne Vodder for Sibast Furniture, with upholstered seats, labelled 'Sibast Furniture' (6)
£600 - 800

Lot 246
An unusual contemporary wall mirror, of nine segmented domed sections within an ebonised frame, 180cm wide 180cm high
£200 - 300



246

S FURNITURE MADE OF BRAZILIAN ROSEWOOD (DALBERGIA NEGRA)

To comply with CITES Regulations on post-1947 furniture made of Brazilian Rosewood, all post-war rosewood furniture items have Article 10 certificates.

If you are purchasing rosewood furniture for commercial purposes and not solely for your own use, CITES regulations require you to obtain your own certificate. You would need to contact the Animal Health and Veterinary Laboratories Agency ('AHVLA') and, as part of the process of obtaining your document, it is a requirement that you have seen sight of the Sworders' certificate or are aware of its reference number.

It is therefore the responsibility of commercial buyers to ensure that they obtain a copy of the appropriate certificate, or the certificate reference number, after purchase from Sworders Fine Art Auctioneers.

For confirmation of the certificate number, please refer to our website (www.sworder.co.uk).



247

Lot 247

A Samsas sofa,
c. 1940s, designed by Carl Malmsten,
reupholstered,
188cm wide
68cm deep
85cm high
seat 44cm high
£1,000 - 1,500

Lot 249

An Italian mahogany coffee table,
the marble top over a pierced frieze
to each side, with a shaped undertier,
on shaped and tapering supports,
105cm wide
48cm deep
49cm high
£200 - 300

Lot 248

An Italian three-light standard lamp,
173cm high
£150 - 200



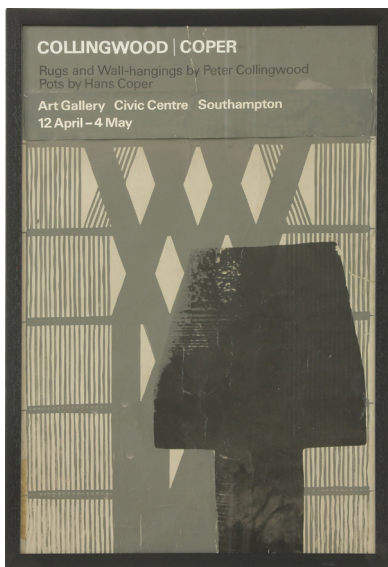
248



249



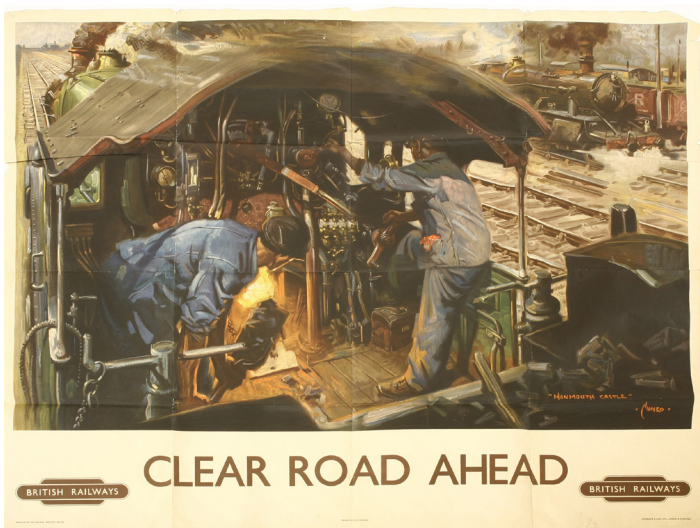
250 part lot



253



254



251

Lot 250

***Angus McBean (1904-1990)**

LAURENCE OLIVIER;
PAUL SCHOFIELD;
JOAN PLOWRIGHT;
SEAN CONNERY, and other subjects,
thirteen photographs, *most inscribed*,
longest 40.5 x 30.5cm (13)
£250 - 350

Lot 251

Terence Cuneo (1907-1996)

'CLEAR ROAD AHEAD'
a British Railways lithograph poster,
printed by Waterlow & Sons Ltd.,
100 x 126cm
£200 - 300

Lot 252

Terence Cuneo (1907-1996)

'ON EARLY SHIFT'
a British Railways lithograph poster,
printed by Waterlow & Sons Ltd.,
100 x 126cm
£200 - 300

Lot 253

A Hans Coper and Peter Collingwood exhibition poster,
ART GALLERY CIVIL CENTRE, SOUTHAMPTON,
72 x 47cm, framed
£100 - 150

Lot 254

A Knoll International exhibition poster,
designed by Herbert Matter for Knoll,
23 x 30cm
£100 - 150



252

Lot 255

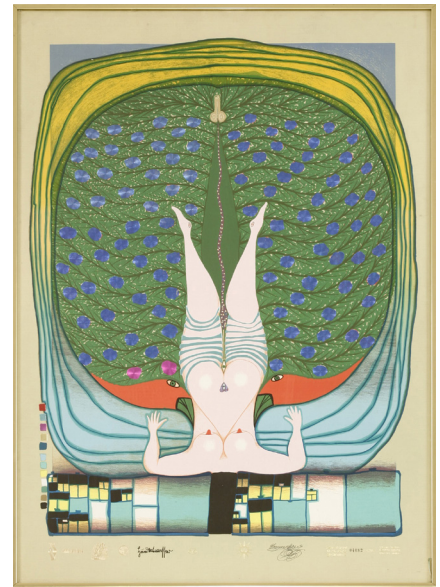
Six Angus McBean exhibition posters, largest 82.5 x 61cm, and a Robert Mapplethorpe poster (7) £200 - 300

Lot 256

Friedrich Schroder-Sonnenstern and Friedenreich Hundert Wasser HOMMAGE À SCHRÖDER-SONNENSTERN, 1972
Numbered 04082/4200
100 x 70cm, framed
£150 - 250



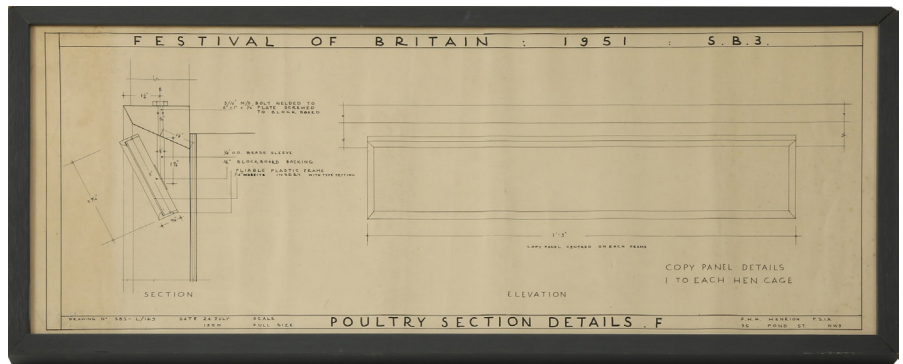
255 part lot



256

Lot 257

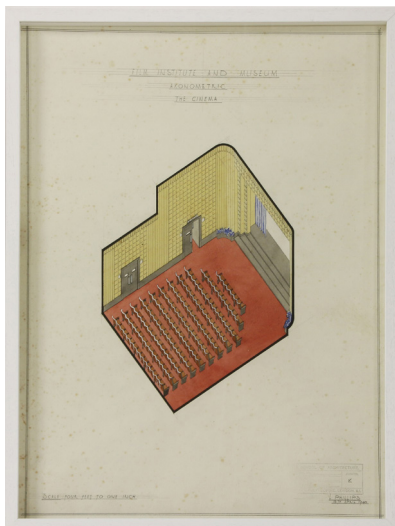
F H K Henrion FSIA
'TERRACE FURNITURE TYPE 2';
'FLOWER ENGRAVINGS
DISPLAY WALL';
'POULTRY SECTION DETAILS F',
Three blueprint designs for the Festival of Britain
largest 51.5 x 91cm, mounted
and framed (3)
£150 - 200



257

Lot 258

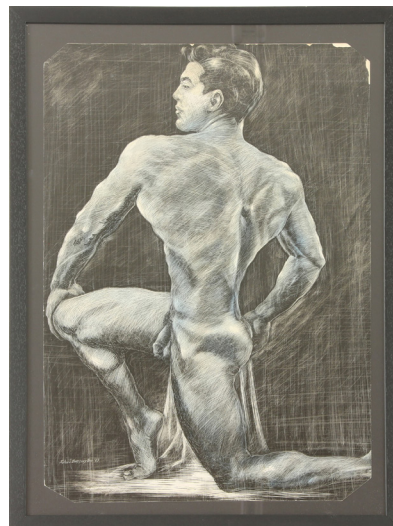
Two Axonometric architectural drawings
'THE CINEMA',
Scale four feet to one inch, by
L Phillips, 15th April 1940, with
'The Polytechnic, London School of
Architecture' stamp
73 x 52cm, framed
£150 - 200



258

Lot 259

*John Barrington (1921-1991)
A MALE NUDE STUDY
Scratched out on paper
59 x 41cm, framed
£200 - 300



259

Lot 260

*Bernard Meninsky (1891-1950)
GUARDIAN ANGEL, an illustration of one of Milton's poems
Unsigned, pen and ink
30 x 21.5cm, mounted and framed
£600 - 800



260



261



263



264



262

Lot 261

An industrial stool, mid-20th century, the swivelling leatherette seat on a sprung metal base, 55cm high
£100 - 200

Lot 262

A wire and enamel coat rack, 1960s, the enamel panels depicting 'The Seven Ages of Womanhood', from a young girl to a young mother, 90cm wide
£100 - 150

Lot 263

A desk chair, designed by Charles Eames for Herman Miller, numbered '938-138', on a revolving stand
£400 - 600

Lot 264

A desk chair, designed by Charles Eames for Herman Miller, numbered '938-138', on a revolving stand
£400 - 600

Lot 265

'Olivetti 82 Diaspron', designed by Marcello Nizzoli, lithograph in colours, 1959, printed by N. Moneta, Milano 70 x 50cm
£300 - 500

Lot 266

An Italian blue lacquered aluminium and opaline glass 'Platea' table lamp, c.1965-70, by Leonardo Ferrari and Franco Mazzucchelli-Tartaglino for Artemide, with a dish-shaped circular base supporting two opaline glass shades, 40cm wide 40cm high
£250 - 350

Lot 267

An enamelled vase, designed by Paolo di Poli, the slender copper vase enamelled with blue, pink and silver, on a bark-like ground, inscribed 'De Poli', 30cm high
£600 - 800



265



266



267



268

Lot 268

Two Fornasetti 'Astrolabio' and 'Melodramma' plates, designed by Piero Fornasetti, printed and gilt, printed mark 'Weihnachten 1967' and 'Melodramma 15', 24 and 26.5cm diameter (2)
£200 - 300



269 boxed

Lot 269

A set of six Fornasetti 'Appetiser' bowls, each with a different printed design, with a gilt band to the low foot, printed mark 'Fornasetti Milano, Made In Italy', in original gold box (6)
£150 - 250



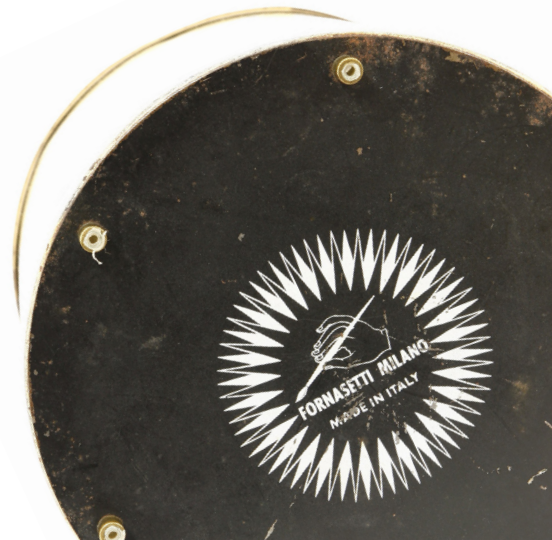
269



270

Lot 270

A Fornasetti waste bin, designed by Piero Fornasetti, lithographed with a repeating design of a soldier on horseback holding a whip, with a brass collar, on low feet, printed 'Fornasetti Milano Made in Italy', 26cm diameter 28cm high
£300 - 500





271

Lot 271

A PK31/3 leather sofa, designed by Poul Kjaerholm for E Kold Christensen, with leather cushions, raised on chrome supports, 198cm wide 66cm deep 70cm high
£5,000 - 7,000

Lot 272

A burrwood, chrome and brass table, in the manner of Willy Rizzo, the octagonal glass top over a plinth, 141cm diameter
£400 - 600

Lot 273 §

A Danish rosewood desk, designed by Kai Kristensen for Feldballe Møbelfabrik, the shaped kidney top over four drawers, a tambour cupboard to the side, opening to reveal revolving two-tier shelves, 137cm wide 71cm deep 74.5cm high
£800 - 1,200

Lot 274 §

A rosewood circular table, designed by Kai Kristiansen, with an extra leaf, 123cm diameter extended 174cm long 72.5cm high
£300 - 500

§ FURNITURE MADE OF BRAZILIAN ROSEWOOD (DALBERGIA NEGRA)

To comply with CITES Regulations on post-1947 furniture made of Brazilian Rosewood, all post-war rosewood furniture items have Article 10 certificates. If you are purchasing rosewood furniture for commercial purposes and not solely for your own use, CITES regulations require you to obtain your own certificate. You would need to contact the Animal Health and Veterinary Laboratories Agency ('AHVLA') and, as part of the process of obtaining your document, it is a requirement that you have seen sight of the Sworders' certificate or are aware of its reference number. It is therefore the responsibility of commercial buyers to ensure that they obtain a copy of the appropriate certificate, or the certificate reference number, after purchase from Sworders Fine Art Auctioneers. For confirmation of the certificate number, please refer to our website (www.sworder.co.uk).



272



273



274



Lot 275 §

A set of six rosewood dining chairs, designed by A J Milne for Mines and West in 1947 and retailed by Heal's, upholstered in grey (6)
£2,500 - 3,500

Literature: For a similar example, see Charlotte & Peter Fiell, '1000 Chairs', Taschen, p.264.



275

Lot 276 §

A rosewood sideboard, designed by Robert Heritage, wall mounted, with an arrangement of four drawers with brass recessed handles and two sliding cupboards, 214cm wide
46cm deep
46cm high
£400 - 600



276

Lot 277

A pair of cocktail armchairs, c.1950, Italian, each with original upholstery, 53.5cm wide, 60cm deep, 57cm high (2)
£300 - 500

Lot 278 §

An 'Executive' rosewood and leather desk chair, designed by Arne Vodder for Sibast, with a revolving stand on castors, 72cm wide, 105cm high, seat 50cm high
£400 - 600

Lot 280

*Ann Carrington (contemporary)
HORN SCULPTURE
Constructed with vintage cutlery
each piece 92.5 x 152cm
£250 - 350

Ann Carrington graduated from Sculpture in 1987. In 1988 she received The Herbert Read Award, followed by the Commonwealth Fellowship for Sculpture in 1992. Two major Arts Council of Great Britain awards followed in 1994 and 1997.

She has exhibited worldwide and fulfilled many private and public commissions, including The Royal Jubilee Banner for the Queen in celebration of her Diamond Jubilee and works for the W Hotel Hoboken, The Waldorf Astoria, The Alpini Gstaad, the Chiltern Firehouse and Paul Smith.

Lot 279 §

A rosewood dining room suite, designed by Niels Otto Møller for J L Møller, comprising:
an extending dining table, model No.15, with folding leaf, on four tapering legs, extended 174cm, 72cm high, and
a set of six chairs, model No.78, with triple rail backs, woven seats, on tapering legs, 80cm (7)
£1,500 - 2,000



277



278



280



279



281

Lot 281

A Theo Fabergé 'Coral' glass egg ornament, c.1989, limited edition of 750, *Theo Faberge, Birmingham, 1989*, the glass spiral moulded and gilt egg, surmounted with an Imperial crown orb and cross, the inner section silver mounted, with fish amongst coral, *etched signature 'T Faberge No. 431'*, 13.2cm, in a fitted case
£500 - 700



282

Lot 282

A Theo Fabergé cocobolo wood 'Scribe' egg, 1985, the central shaft fitted with a pencil, 24 carat mounted, *signed to the plinth 'T Faberge No.82'*, 12.7cm high, in a fitted case
£300 - 500



283

Lot 283 §

An Italian rosewood side cabinet, the side edges carved with beadwork, with a fall front, two sliding cupboards and a shelf over three drawers, *two damaged*, with grey leatherwork fronts, 164cm wide, 46cm deep, 125cm high
£250 - 350



284



Lot 284

A black enamelled and chrome table lamp, 44cm high, and a teak and copper lamp table, 39.5cm diameter, 45cm high (2)
£150 - 250



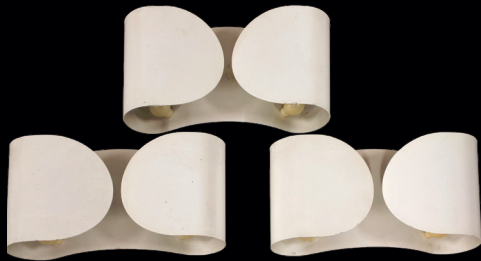
285



286



287



288



289



290



291



292

Lot 285
A Louis Poulsen PH5 pendant light,
designed by Poul Henningsen,
50cm diameter
£100 - 150

Lot 286
A pair of white pendant lights,
designed by Poul Henningsen,
47cm diameter (2)
£150 - 250

Lot 287
A pair of egg stools,
designed by Philippe Starck, 1980s,
ex-Mondrian Hotel,
65cm long
45cm high (2)
£400 - 600

Lot 288
Three Flos 'Foglio' wall lights,
designed by Tobia Scarpa, in 1966,
in white,
37cm wide
10.5cm deep
21cm high (3)
£250 - 300

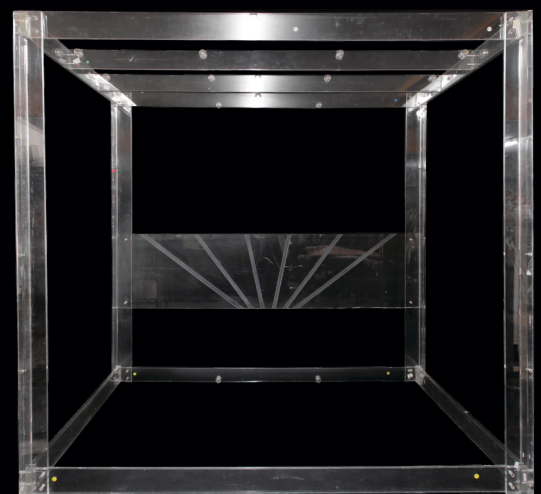
Lot 289
A set of three chrome wall lights,
with pencil shades,
86cm high
32cm deep (3)
£300 - 500

Lot 290
A three-division painted stand,
after a design by Osvaldo Borsani, with three
glass divisions, on a shaped tripod stand,
40cm diameter
45.5cm high
£150 - 250

Lot 291
A pyramid glass table lamp,
designed by Carlo Nason for Mazzega,
with four clear and tinted glass shades,
45cm diameter
38cm high
£400 - 600

Lot 292
A low Lucite coffee table,
171cm wide
30cm deep
34cm high
£150 - 250

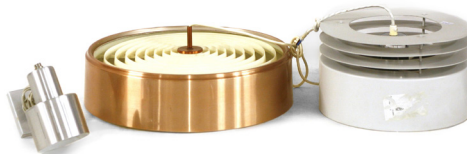
Lot 293
A Lucite four-poster bed,
c.1970, by Charles Hollis Jones, with a sunburst
headboard, with four horizontal beam supports,
214cm wide
216cm deep
199cm high
£800 - 1,200



293



294



295



Lot 294

A Danish armchair, designed by Hans Wegner, with a blue cushion seat and back, 74cm wide 65cm high seat 38cm high £450 - 550

Lot 295

Five Danish lights, three hanging pendant lights, a three-light hanging light, and a wall light (5) £100 - 200

Lot 296

A Danish five-drawer teak chest, with top-mounted handles, with 'Danish Makers' Furniture Control' label, on turned feet, 81.5cm wide 45cm deep 104.5cm high £200 - 400

Lot 297

A Danish teak desk bureau, in the manner of Kai Kristensen, with four drawers above an etched sliding glass compartment over three bow front drawers, 89cm wide 51cm deep 117.5cm high £250 - 350

Lot 298

*Hubert Yencesse (1900-1987) TORO patinated bronze, signed 'Hubert Yencesse', with 'Alexis Rudier Fondateur, Paris', 72cm high £1,500 - 2,000

Lot 299

A contemporary glass sculpture, on a glass and composition plinth, 93cm wide 21cm deep 50cm high £300 - 500



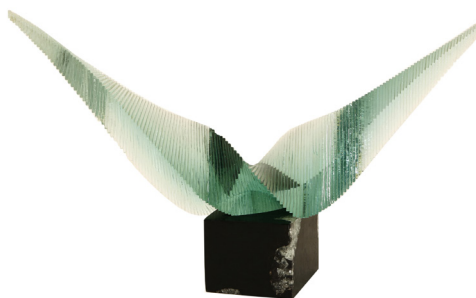
296



297



298



299

§ FURNITURE MADE OF BRAZILIAN ROSEWOOD (DALBERGIA NEGRA)

To comply with CITES Regulations on post-1947 furniture made of Brazilian Rosewood, all post-war rosewood furniture items have Article 10 certificates.

If you are purchasing rosewood furniture for commercial purposes and not solely for your own use, CITES regulations require you to obtain your own certificate. You would need to contact the Animal Health and Veterinary Laboratories Agency ('AHVLA') and, as part of the process of obtaining your document, it is a requirement that you have seen sight of the Sworders' certificate or are aware of its reference number.

It is therefore the responsibility of commercial buyers to ensure that they obtain a copy of the appropriate certificate, or the certificate reference number, after purchase from Sworders Fine Art Auctioneers.

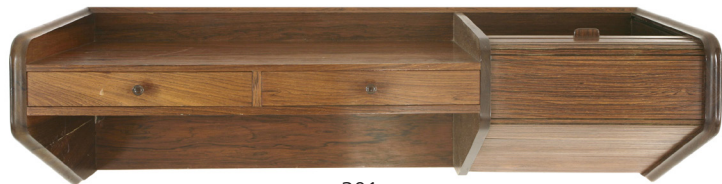
For confirmation of the certificate number, please refer to our website (www.sworder.co.uk).



300



302



301



303

Lot 300 §

A Danish rosewood six-drawer chest,
76.5cm wide
41cm deep
101cm high
£300 - 500

Lot 301 §

A Danish rosewood wall-mounted shelf,
with two drawers and a tambour section,
96cm wide
£200 - 300

Lot 302

An Italian chrome framed wall mirror,
1950s, with an etched plate and an aluminium frame,
73cm wide
119cm high
£250 - 350

Lot 303

An exceptional Italian blonde wood wardrobe,
after a design by Giovanni Garibaldi and Paolo Buffa,
each door front with carved panels, with bands of flowers and foliage,
305cm wide
65cm deep
188cm high
£3,000 - 5,000



304

Lot 304

A cold painted bronze eagle, 20th century, standing on a granite boulder, 38.5cm wide 36.5cm high
£500 - 800



305

Lot 305

A pair of swivel armchairs, designed by Charles and Ray Eames for Herman Miller, with ribbed brown upholstery, '938-138' cast mark, 56cm wide 57cm deep 83cm high (2)
£200 - 300



306

Lot 306

Two Charles and Ray Eames swivel armchairs, for Herman Miller, with ribbed brown upholstery, '938-138' cast mark, 58cm wide 57cm deep 83cm high (2)
£200 - 300

Lot 308

A pair of Italian armchairs, 1950s, probably by ISA, with purple upholstery and gilt cast legs, 75cm wide 80cm deep 96cm high seat 38cm high (2)
£400 - 600

Lot 307

A pair of 'DS-68' brown leather armchairs, by De Sede (2)
£400 - 600

Lot 309

A pair of ebonised corner cupboards, with two shelves, over a single shelf and a cupboard, 63cm wide 45.5cm deep 193.5cm high (2)
£300 - 500



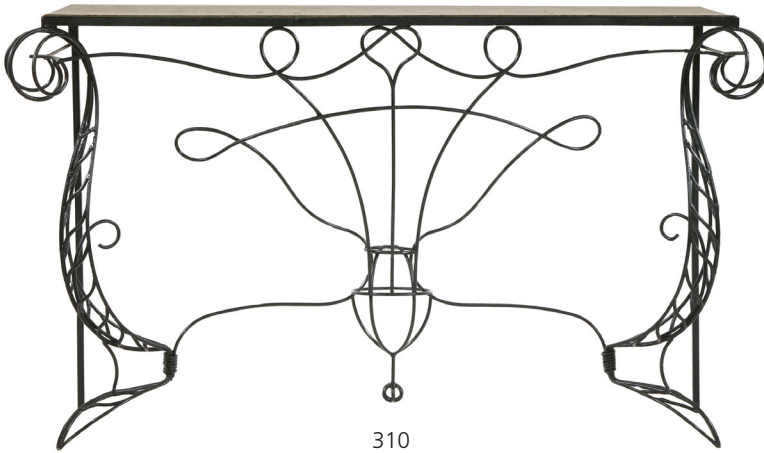
307



308



309



310



311



312



313

Lot 310

An Italian console table,
c.1950, attributed to Giovanni
Ferrabini, the marble top over
wrought ironwork,
162cm wide
43cm deep
97cm high
£1,000 - 1,500

Lot 311

A pair of wall-mounted
jardinières,
by Anthony Redmile,
modelled as deer heads, with
campana-shaped urns and
applied shell details,
76cm wide
105cm high (2)
£2,000 - 3,000

Lot 312

An American walnut
headboard,
c.1950,
141.5cm wide
110cm high
£200 - 300

Lot 313

A Danish aluminium ceiling
pendant,
33cm diameter, and
another,
54cm diameter (2)
£100 - 150

Lot 314

A pair of Italian table lamps,
1960s, each raised on brass
finished plinths, each with three
light fittings, *no shades*,
73cm high (2)
£200 - 300

Lot 315

A brass dining table,
after Jean Royère, with a circular
glass top, raised on a tubular
brass stand,
153cm diameter
£1,200 - 1,500



314



315



316

Lot 316

A Moorcroft 'Lamia' vase, 1995, designed by Rachel Bishop, signed 'RJB des 17/7/95', also 'John Moorcroft' and numbered 36/100, 52.5cm high £800 - 1,200



317

Lot 317

A Moorcroft 'Ryden Lane' vase, 1997, designed by Rachel Bishop, signed 'R. J. Bishop' and numbered '62/100', 67.5cm high £1,000 - 1,500



318

Lot 318

A Moorcroft 'Ryden Lane' ginger jar and cover, 1999, a trial, dated '6.1.99', 15.5 cm high, with box (3) £250 - 350

Lot 319

A Moorcroft 'Meknes' vase, 1999, designed by Beverley Wilkes, a prestige trial vase, dated '15.4.99', 22cm high, with box (2) £200 - 300

Lot 320

A Moorcroft 'After the Storm' vase, 1998, signed and dated 'Walter Moorcroft, 28.11.98', 26cm high, with box (2) £1,000 - 1,500

Lot 321

A Moorcroft 'Bullerswood' vase, 2002, designed by Rachel Bishop, a trial dated '18-2-02', 30.5cm high, with box (2) £500 - 700



319



320



321



322

Lot 322

An Italian wall mirror,
1960s, with a central rectangular plate, etched blue
tinted glass edges and a brass frame,
62.5cm wide
82.5cm high
£200 - 300

Lot 323

A brass coffee table,
by De Barry, 1970s, stamped and hammered details,
100.5cm square
45cm high
£400 - 600



323



324

Lot 324

A pair of side tables,
each with mirrored circular tops raised
on monopodia supports,
45cm diameter
44cm high (2)
£200 - 400

Lot 326

A Baguès painted hanging
light,
44cm high
£150 - 250

Lot 327

A wicker coffee table,
90cm wide
50cm deep
47cm high
£200 - 300



325

Lot 325

A mirrored wall shelf,
with a mirrored top,
90cm wide
25.5cm deep
£100 - 150



326



327



328



331



329



330



332



333

Lot 328

An Italian fibreglass wall light, 1960s, modelled as a man's torso, fitted with four lights, 125cm wide 105cm high £400 - 600

Lot 329

A large oak coffee table, with a bevelled glass top, 'X' stretchers applied with stars and a glass undertier, stamped 'Attribut London', 150cm wide 100cm deep 45cm high £400 - 600

Lot 330

An oak circular coffee table, by Jacques Adnet, the plank top and legs with reeded decoration, mounted with leather details, 73.5cm diameter 35.5cm high £400 - 600

Lot 331

A French wrought iron eight-light chandelier, centred with a marble sphere pierced with an arrow, 76cm diameter 46cm high £800 - 1,200

Lot 332

A marble coffee table, 1960s, with marble fragments mounted to incorporate a design, on iron supports, 130cm wide 48cm deep 43.5cm high £200 - 400

Lot 333

A marble coffee table, the rectangular top on a bronze stand, 104cm wide 54cm deep 35cm high £300 - 500



334

Lot 334

A French calamander and chrome desk,
the rectangular top raised on four silvered
balls, a pair of drawers and a cupboard either
side, raised on a chrome arched stand,
180cm wide
70cm deep
73cm high
£1,000 - 1,500



335

Lot 335

A coffee table,
1970s, with a rectangular glass top
on a bronze stand,
110cm wide
60cm deep
40cm high
£200 - 400



336

Lot 336

A modern travertine marble table,
designed by Jean Charles and Willy
Rizzo in 1970, the rectangular top
with a brass edge, raised on a single
central column,
200cm wide
105cm deep
74cm high
£800 - 1,200



Lot 337

An Italian palmwood and acer console table, attributed to Pierluigi Colli, with four central drawers, flanked with two cupboards, with ring turned handles, the supports with ribbed mounts, 200cm wide
45cm deep
82.5cm high
£1,000 - 1,500



Lot 338

A pair of Italian blue upholstered armchairs, 1950s, in the style of Marco Zanuso, 67cm wide
78cm deep
91.5cm high (2)
£400 - 600



Lot 339

An Italian walnut dining table, with a rectangular top, canted corners, raised on octagonal supports, 181cm wide
89cm deep
75.5cm high
£400 - 600



340



341

Lot 340

A pair of Italian side tables,
1960s, each with maple and walnut
supports, and square glass tops (2)
£300 - 500

Lot 341

A blackamoor side table,
with a circular glass top, the base
modelled as a turbaned servant
holding the top, on a square base,
57cm diameter
55cm wide
£300 - 500



342

Lot 342

An Italian beechwood and glass
coffee table,
1960s,
127cm wide
64cm deep
55cm high
£250 - 350

Lot 343

A set of six Italian dining chairs,
attributed to a design by Paolo Buffa,
with cream upholstered seats (6)
£1,000 - 1,500



343



344



345



346



Lot 344

A pair of Italian wall mirrors, 1950s, each of shaped rectangular form, with a concave top, etched with motifs and panelled details, 67cm wide 98.5cm high (2)
£250 - 350

Lot 345

A contemporary faux shagreen-mounted stool, of dodecagon shape, 60cm diameter 50.5cm high
£250 - 350

Lot 346

A pair of 'Strange Things' chairs, designed by Philippe Starck, in 2002, with green and orange upholstery (2)
£400 - 600

Lot 347

A lounge armchair, 1960s, now reupholstered in faux fur, 73cm wide
£200 - 300

Lot 348

Zofia Wolska (1934-2016)
BIRD IN A TREE
Bronze, stamped with initials, on a marble plinth
24cm high
£300 - 500



347

Lot 349

A set of twelve Italian painted dining chairs, with pink upholstered backs and seats (12)
£1,000 - 1,500



348



349

Lot 350 §

A set of eight Brazilian dining chairs, upholstered in cream leather with rosewood frames and buttons, remnants of labels 'MZ LTDA Arenida Brigadeiro Lui Antonio, Sao Paulo', 46cm wide 55cm deep 81cm high seat 45cm high (8) £600 - 900



351

Lot 354

An Italian two-light floor lamp, 152cm high overall £150 - 200

Lot 355

Three Italian ebonised armchairs, each with cream upholstered seats, shaped arms and a brass stretcher, worn (3) £250 - 350

§ FURNITURE MADE OF BRAZILIAN ROSEWOOD (DALBERGIA NEGRA)

To comply with CITES Regulations on post-1947 furniture made of Brazilian Rosewood, all post-war rosewood furniture items have Article 10 certificates.

If you are purchasing rosewood furniture for commercial purposes and not solely for your own use, CITES regulations require you to obtain your own certificate. You would need to contact the Animal Health and Veterinary Laboratories Agency ('AHVLA') and, as part of the process of obtaining your document, it is a requirement that you have seen sight of the Sworders' certificate or are aware of its reference number.

It is therefore the responsibility of commercial buyers to ensure that they obtain a copy of the appropriate certificate, or the certificate reference number, after purchase from Sworders Fine Art Auctioneers.

For confirmation of the certificate number, please refer to our website (www.sworder.co.uk).

Lot 351

A walnut and marble centrepiece, 23cm square 14cm high £150 - 200

Lot 352

A chrome standard lamp, with three articulated positions and two adjustable blocks, 210cm high £400 - 600

Lot 353

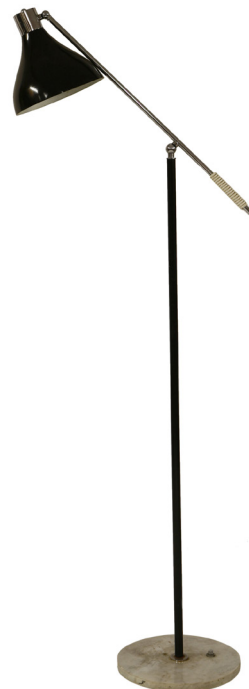
An Italian chrome floor lamp, 187cm high £150 - 200



350



352



353



354



355



356

Lot 356

***Mark Brazier-Jones (b.1956)**
a pair of 'St James' chairs, 1995,
with red upholstered backs and seats,
80cm wide
63cm deep
80cm high (2)
£3,000 - 5,000



357

Lot 357

***Mark Brazier-Jones (b.1956)**
a 'St James' coffee table, 1995, with a shaped
marble chip terrazzo top, raised on cast supports,
80cm square
40cm high
£1,000 - 1,500



358

Lot 358

***Mark Brazier-Jones (b.1956)**
a set of six 'Fountains' wall lights, 1995,
each with a moulded glass shade, on a
torch with laurels to the side,
68cm high (6)
£2,500 - 3,500



361

Lot 361

***Mark Brazier-Jones (b.1956),** 1995, a bronze and steel 'ting' lantern, a unique one-off commission with blossom branch and bat detail, bronze and steel, with handmade silk shade by 'Sera of London', *signed 'Mark Brazier-Jones', with certificate of authenticity*, 202cm high
£3,000 - 5,000

Provenance: Acquired directly from the artist in 2006.

Lot 359

***Mark Brazier-Jones (b.1956),** an aluminium 'San Demas' lounge chair, 1992, produced as an artist proof prior to the final limited edition of 100, cast aluminium, and upholstered in red fabric, *signed and dated 2001, and marked 'Artist proof' to the rear leg, with certificate of authenticity*, 72cm wide
80cm deep
76cm high
£3,000 - 4,000

Provenance: Acquired directly from the artist in 2001.



359

Lot 360

***Mark Brazier-Jones (b.1956),** 1998, an aluminium 'Lunar' lounge chair, a rare first edition large-scale version, cast in 'studio finish' aluminium with white wool upholstery, cast 'Mark Brazier-Jones', *with certificate of authenticity*, 78cm wide
68cm deep
78cm high
£3,000 - 5,000

Provenance: Acquired directly from the artist in 1999.



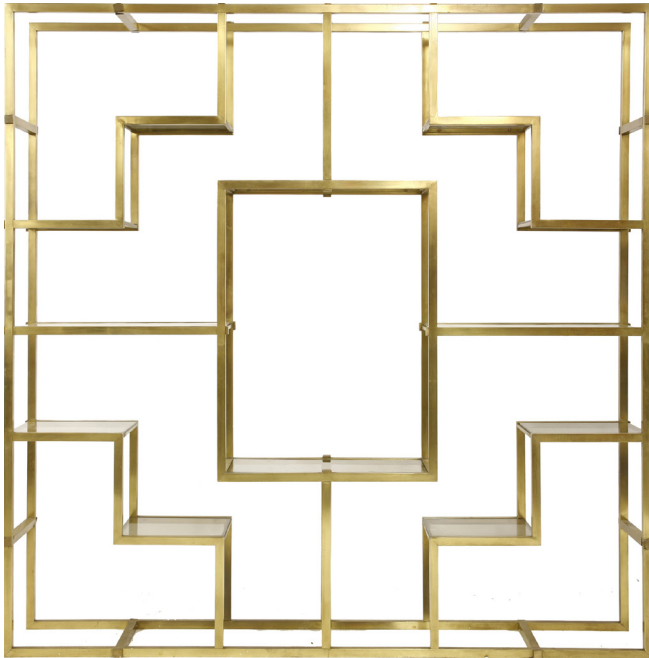
360



362



362 open



363

Lot 362

An Italian low room divider, modelled as a faux brick wall, with a removable ebonised top revealing a metal planter, 176.5cm wide 34cm deep 108.5cm high £400 - 600



365 top



364

Lot 363

A modern brass wall shelf, with twelve glass shelves, 190cm wide 36.5cm deep 190cm high £500 - 800

Lot 364

An Italian walnut mirror, of rectangular form, with inverted details to the top and base, with a moulded frame, 99.5cm wide 125.5cm high £250 - 300



365

Lot 365

An Italian circular table, maple veneered, the segmented top, fitted with glass, with an ebonised edge, on a tapering column on four supports, 110.5cm diameter 82cm high £400 - 600

Lot 366

A pair of Italian maple console tables, each with glass tops, scrolled brackets and leaf details, 60cm wide 32cm deep 25cm high (4) £300 - 500



366

**Lot 367**

Mikhail Gorbachev and a bust of a policeman, late 20th century, resin busts, removed from Leeds Waxwork Museum in 1997, Gorbachev 24cm high (2) £150 - 250



368

Lot 368

A Mao Zedong waxwork, mid-late 20th century, a waxwork model of Chairman Mao, dressed in a Yat-sen suit, on a metal base, removed from Leeds Waxwork Museum in 1997, 177cm high £1,000 - 1,500



367

Lot 369

An Italian wool panel, in cream, grey and black squares £150 - 250



369

**Lot 370**

An Italian mirror top coffee table, the bevelled edge plate on an ebonised frame, 111cm wide 60.5cm deep 40cm high £200 - 300



371

Lot 371

An Italian ebonised wall mirror,
with an etched mirror plate,
81 x 123cm
£150 - 200



372

Lot 372

A chrome table lamp,
54cm high
£150 - 200



373

Lot 373

A 'Fun 1DM' hanging light,
after a design by Verner Panton in 1964,
36cm diameter
37cm high
£100 - 150



374

Lot 374

An Italian chrome desk chair,
with a revolving seat,
57cm wide
55cm deep
90cm high,
and another (2)
£150 - 200

Lot 375

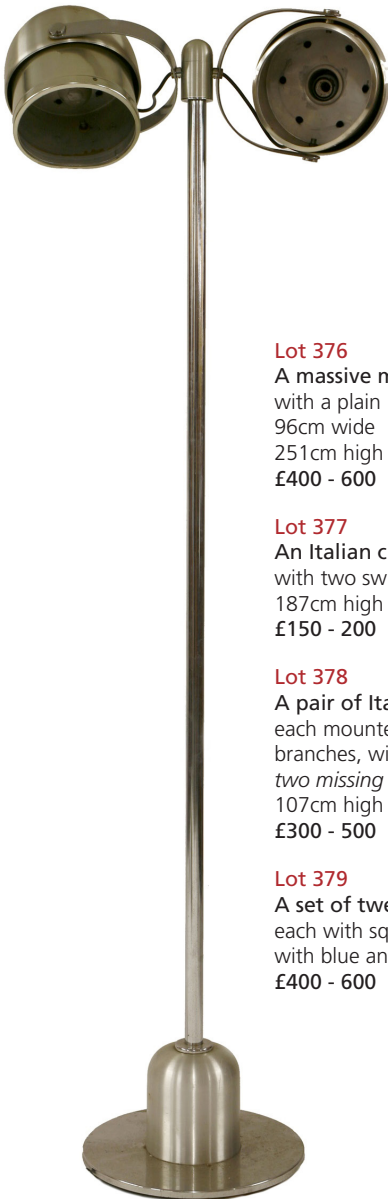
Two modern three-piece condiment sets,
Mappin and Webb and T... P...,
London 1971 and 1972,
each piece of cylindrical form with gilt bark
decoration,
9cm high (3)
£150 - 200



375



376



377

Lot 376

A massive mirror,
with a plain brass frame,
96cm wide
251cm high
£400 - 600

Lot 377

An Italian chrome standard lamp,
with two swivel lights,
187cm high
£150 - 200

Lot 378

A pair of Italian hanging lights,
each mounted with mirrors and six-light
branches, with glass panels to the sides,
two missing caps,
107cm high (2)
£300 - 500

Lot 379

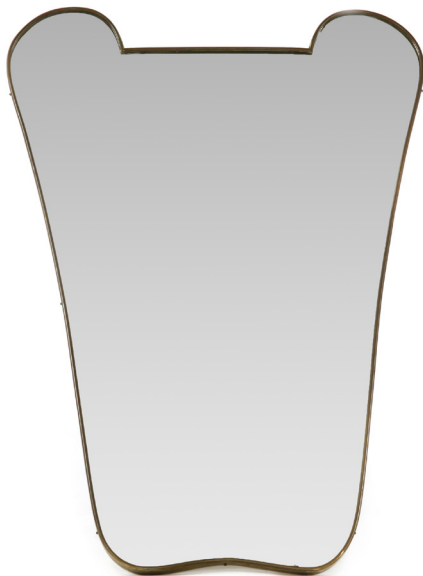
A set of twelve Italian chrome wall lights,
each with square concave glass shades,
with blue and amber inclusions
£400 - 600



378



379



380

Lot 380

An Italian wall mirror, 1950s, of shaped wedge form with metal edges, 63cm wide 89.5cm high £150 - 200



381

Lot 381

An Italian walnut dining table, with a brass inlaid grid to the top, the frieze with reeded panels, the ends with drawers/extensions, 200cm wide 90cm deep 78.5cm high £700 - 900



382



383

Lot 382

A Jaeger-LeCoultre clock, with a faux lapis lazuli dial, in a brushed stainless steel case, *numbered '5059'*, 19.5cm high, and a contemporary clock, with a glass mount, 37cm high (2) £200 - 300

Lot 383

A silver-plated sculptured lamp, fitted on a square plinth, with a switch, 37cm high, a pair of Christofle boat-shaped dishes, 36.5cm long, and an asparagus stand, 30cm long (4) £150 - 250

Lot 384

A pair of armchairs, 1950s, with original upholstery, 69cm wide 74cm deep 84cm high (2) £300 - 500



384





385

Lot 385

A chrome and walnut dining table, with a glass top, 213cm wide 107cm deep £400 - 600



386

Lot 386

A chrome console table, with a double 'C' scrolled plinth, 113cm wide 218cm deep 74cm high £300 - 500



387

Lot 387

A pair of French table lamps, 1950s, each on tapering columns, with faux wood stands, an opaline inner and paper outer shade, 79.5cm high (2) £250 - 350



388

Lot 388

A glass and chrome coffee table, with a circular top, on a 'X' frame stand, 139cm diameter 42.5cm high £200 - 300



389

Lot 389

A set of four chairs, each with cream seats, raised on burgundy frames (4) £250 - 350

Lot 390

A glass console table, raised on two Lucite wedges, 160cm wide 68.5cm deep 76.5cm high £250 - 350

Lot 391

A centre table, with a bevelled facet circular top, raised on a triform chrome and marble stand, 106.5cm diameter 75cm high £250 - 350



390



391



392

Lot 392

A Danish tan leather three-seater settee,
216cm wide
79cm deep
68cm high
£200 - 400

Lot 393

A glass console table,
raised on a cruciform Lucite column,
168cm wide
45.5cm deep
75cm high
£300 - 500



393

Lot 394

A pair of leather armchairs,
in the style of Børge Mogensen,
with wing backs and matching
stools,
68cm wide
84cm deep
105cm high (4)
£200 - 400



394



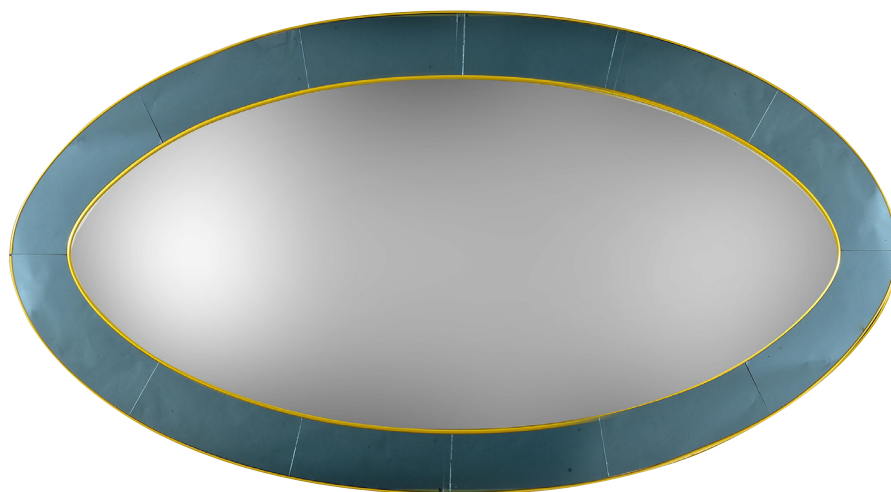
396

Lot 395

A large Italian oval wall mirror,
with a central clear glass panel, bordered
with blue tinted panels,
200cm wide
100cm high
£1,000 - 1,500

Lot 396

Suzanne Schlum (contemporary)
PORTRAIT OF A GIRL ON WHITE;
PORTRAIT OF A GIRL ON BLACK
Two, one signed and dated 2009,
oil on denim and canvas
101.5 x 127.5cm (2)
£250 - 350



395

Lot 397

A contemporary glass Lucite and chrome desk,
162cm wide
112cm deep
74.5cm high
£300 - 500

Lot 398

A chrome arc light,
189cm high
195cm long approximately
£250 - 350



397



398

Lot 399

A circular glass and Lucite side table,
the bevelled glass with a drilled hole to the centre,
70cm diameter
40.5cm high
£150 - 250



399

Lot 400

A Memphis clock,
designed by Nathalie du Pasquier and
George J Sowden for Neos Lorenz,
with a quartz battery movement,
27cm high
£200 - 300



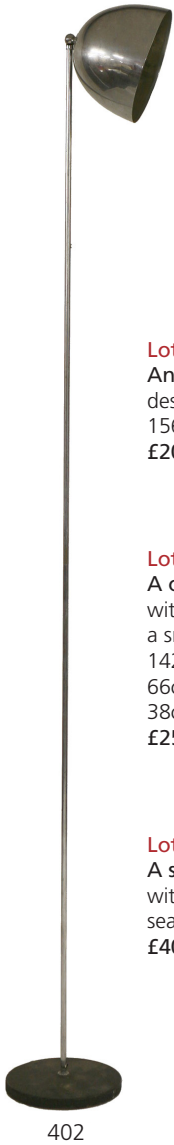
400

Lot 401

A coffee table,
with a bevelled glass top, raised on a brass stand,
71cm wide
142cm deep
43.5cm high
£200 - 300



401



402

Lot 402

An Italian chrome floor lamp,
designed by Ignazio Gardella,
156cm high
£200 - 300



403

Lot 403

A chrome and brass coffee table,
with concave canted corners and
a smoke glass top,
142cm wide
66cm deep
38cm high
£250 - 350



404

Lot 404

A set of six Italian dining chairs,
with ebonised frames and cream
seats (6)
£400 - 600



405

Lot 405

A bronze effect metal coffee table,
with a bevelled glass top,
122cm wide
60.5cm deep
41.5cm high
£300 - 500

Lot 406

A tesserae and brass console table,
with a glass raised on a 'U' shaped stand and plinth
132cm wide
41cm deep
79.5cm high
£300 - 500



406



407

Lot 407***Julia Whatley (contemporary)**

KAMA SUTRA II

Coloured print, pencil signed and numbered
10/10, with the print and frame hand finished
by the artist

93 x 119.5cm

£200 - 300



408

Lot 409***Julia Whatley (contemporary)**

FROM THE KAMA SUTRA SERIES

Coloured print, pencil signed and numbered
48/50, with the print and frame hand finished
by the artist

93 x 119.5cm

£200 - 300



409

Lot 411**An Italian wall mirror,**

46cm wide

97.5cm high

£200 - 300

Lot 408***Julia Whatley (contemporary)**

KAMA SUTRA II

Coloured print, pencil signed and numbered
10/10, with the print and frame hand finished
by the artist

93 x 119.5cm

£200 - 300

Lot 410**A Lucite and glass console table,**

154cm wide

40.5cm deep

62cm high

£250 - 450



410



411



412

Lot 412

A Lucite clock,
with a silvered face,
31.5cm wide
155.5cm high
£200 - 400



413

Lot 413

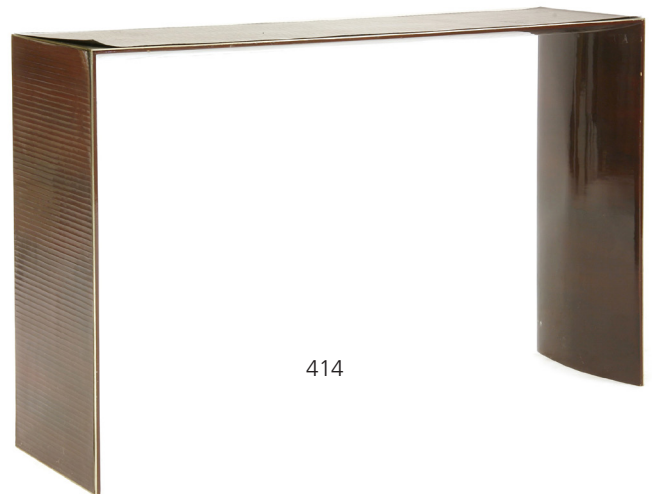
British School
MOTHER AND CHILD,
c.1970
Oil on board
124 x 124cm
£200 - 400



416

Lot 414

A tesserae console
table,
120cm wide
30.5cm deep
75.5cm high
£250 - 450



414



415

Lot 415

A large tesserae mirror,
with an arched fan
surmount, with plain
columns,
112 wide
193cm high
£200 - 400

Lot 416

A chrome 'Atom'
hanging light,
1960s, with six globe
shades,
58cm high
160cm overall
£300 - 500

Lot 417

A coffee table
with glass top,
118cm wide
57cm deep
41cm high
£150 - 250



417

Lot 418 §

A Gordon Russell rosewood sideboard, designed by Martin Hall, with cupboards enclosing shelves and drawers, 220cm wide
52cm deep
88cm high
£300 - 500



418



419

Lot 419 §

A Gordon Russell rosewood sideboard, designed by Martin Hall, with cupboards enclosing shelves and drawers, 220cm wide
52cm deep
88cm high
£300 - 500

Lot 420 §

A Gordon Russell rosewood sideboard, designed by Martin Hall, with cupboards enclosing shelves and drawers, 220cm wide
52cm deep
88cm high
£300 - 500



420

Lot 421

Italian School
ABSTRACT, c.1980
Oil on canvas, signed and inscribed Eren,
67-5-31, Milano Titolo
202 x 182cm
£200 - 400



421

§ FURNITURE MADE OF BRAZILIAN ROSEWOOD (DALBERGIA NEGRA)

To comply with CITES Regulations on post-1947 furniture made of Brazilian Rosewood, all post-war rosewood furniture items have Article 10 certificates.

If you are purchasing rosewood furniture for commercial purposes and not solely for your own use, CITES regulations require you to obtain your own certificate. You would need to contact the Animal Health and Veterinary Laboratories Agency ('AHVLA') and, as part of the process of obtaining your document, it is a requirement that you have seen sight of the Sworders' certificate or are aware of its reference number.

It is therefore the responsibility of commercial buyers to ensure that they obtain a copy of the appropriate certificate, or the certificate reference number, after purchase from Sworders Fine Art Auctioneers.

For confirmation of the certificate number, please refer to our website (www.sworder.co.uk).



422

Lot 422

A modern Lucite table,
with a plain rectangular top,
130.5cm wide
67.5cm deep
72.5cm high
£250 - 350

Lot 423

A pair of chrome and glass shelves,
with four tiers, one angled, each with
a bar to the front, on ebonised plinths,
137cm wide
30cm deep
185cm high (2)
£300 - 500



423



Lot 424

Thérèse Theodas (contemporary)
GIRL WITH GLOBE
Signed bronze, numbered 3/9, on a
marble plinth, with certificate signed
by the sculptor
40cm high
£200 - 300

Lot 425

A contemporary walnut and
burrwood coffee table,
by Sam Anderson, the hinged top
opening to reveal a leather interior
panel, the arched supports having
pierced spandrels with fret cut bees,
ducks and flowers, *labelled*,
125.5cm wide
75.5cm deep
45cm high
£1,000 - 1,500



424



425



426

Lot 426

A Pieff dining table,
with a rectangular glass top over a woven panel raised on chrome
supports,
240cm wide
90cm deep
72.5cm high, and
a set of ten chairs,
some labelled (8+2)
£600 - 800

Lot 427

A Pieff teak and chrome sideboard,
with a glass top, over four wicker-mounted cupboards,
enclosing further drawers,
274cm wide
50cm deep
90cm high
£400 - 600



427



428

Lot 428 §

A Pieff teak and rosewood wall system,
1970s, the rail system with nine various
cupboards and drawers, with wicker-mounted
fronts, one with glass cupboards and fitted
with lights,
226.5cm wide
48cm deep
209.5cm high
£600 - 800



429

Lot 429

A pair of large Murano glass lamps,
1970s, with painted shades (2)
£200 - 300

Lot 430

A pair of tulip chairs,
2004, designed by Eero Saarinen and decorated
by Bruno Schiepan, *signed to the stand,*
also labelled to the underside,
67cm wide
81.5cm high
seat 48cm high (2)
£500 - 700

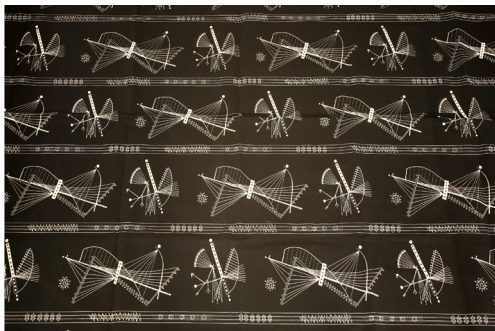


430





431



433



432

Lot 431

A Danish teak coffee table, the hinged top revealing a deep compartment, raised on turned supports,
75cm wide
75cm deep
49.5cm high
£150 - 250

Lot 432

An Egg chair, designed by Arne Jacobsen for Fritz Hansen, labelled, the light blue upholstery worn and discoloured,
86cm wide
70cm deep
106cm high
£1,200 - 1,500

Lot 433

A panel of 'Nautilus' screen-printed cotton fabric, c.1950, designed by Mary Warren,
210 x 118cm
£150 - 250

Lot 434

A Kontiki sofa and lounge armchair, designed by Arne Norell, with tan leather cushions, settee 225cm wide
85cm deep
74cm high
seat 43cm high,
armchair 90cm wide
85cm deep
43cm high (2)
£2,500 - 3,500

Lot 435

A black circular dining table, 1980s, designed by Erwin Nagel for Rosenthal, with four hinged beech veneered flaps, labelled,
140cm diameter
76cm high
£300 - 500



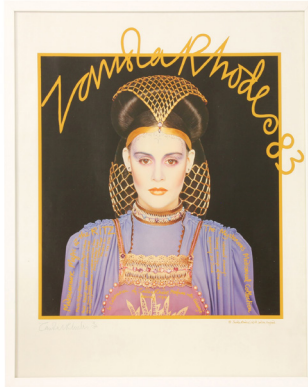
434



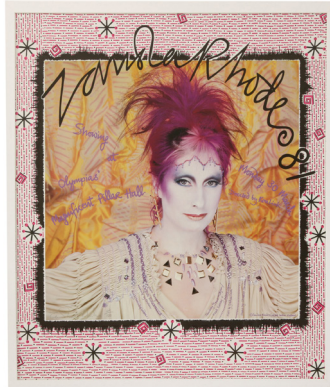
435



435 open



436



437



438

Lot 436

Zandra Rhodes collection posters
'THE MYSTERIOUS MEDIAEVAL
COLLECTION';
ZANDRA RHODES AT OLYMPIA'S
MAGNIFICENT PILLAR HALL
Two pencil signed prints, numbered
31/150 and 44/150
58 x 67cm, framed (2)
£150 - 200

Lot 438

A 'Miamina' stool,
designed by Alberto Salviati
and Ambrogio Tresoldi
for Saporiti, with Missoni
Memphis fabric,
86cm wide
60cm deep
42cm high
£150 - 200

Lot 437

Zandra Rhodes collection posters:
CIRCLE IN THE SQUARE;
74 OLYMPIA'S MAGNIFICENT
PILLAR HALL
Two pencil signed prints, numbered
8/150 and 11/XX
66.5 x 57.5cm, framed (2)
£150 - 200



439



440

Lot 439

A 'Diana' armchair and a side table,
designed by Karin Mobring for Ikea,
with a brown canvas seat,
64cm wide
62cm deep
70cm high
seat 36.5cm high,
table 62cm wide
57cm deep
34cm high (2)
£200 - 300

Lot 440

An 'OTI' chair,
designed by Niels Gammelgaard
for Ikea, with a seat cushion,
93cm wide
80cm deep
80cm high
seat 34cm high
£150 - 200



441



Lot 441

A pair of 'Diana' armchairs, designed by Karin Mobring for Ikea, with cream backs and seats (2)

£150 - 200

Lot 442

A pair of 'Pipistrello' table lamps, designed by Gae Aulenti for Martinelli Luce, 88cm extended (2)

£500 - 700



442

Lot 443

A palmwood standard lamp, 1980s, with a canvas shade, 140cm high

£150 - 200



443

Lot 444

A Danish armchair, with a canvas slung seat and leather straps, 70cm wide 62cm deep 68cm high

£150 - 200



444

Lot 445

An Italian armchair, with red/orange upholstery, on walnut feet, 85cm wide 75cm deep 93cm high

£200 - 300

Lot 446

Bert Lykken, TWO FIGURES WITH MOON (MOTHER AND SON) a woven wall hanging, 56 x 200cm, and another wall hanging, 89 x 150cm (2)

£100 - 150



446



445



447

Lot 447

An Italian silver shield shape mirror, designed by Pietro Chiesa, with a fielded panel, 54.5cm wide 89.5cm high £500 - 800

Lot 448

A set of six Italian walnut dining chairs, designed by Gianni Vigorelli, with black leather and seats, 'X' backed supports, 47cm wide 52cm deep 95cm high seat 48.5cm high (6) £1,500 - 2,000



448

Lot 449

A white lacquered coffee table, after a design by Osvaldo Borsani, the circular dish top with a clear glass panel, raised on tapering supports, mounted with brass caps, *lacking glass*, 89.5cm diameter 49cm high £300 - 500



449

Lot 450

Spare lot

Lot 451

An Italian circular table mirror, designed by Gio Ponti and attributed to FontanaArte, the brass-mounted swivel mirror on a glass plinth, 44.5cm wide 56cm high £800 - 1,200



451

Lot 452

A pair of side tables, designed by Ico and Luisa Parisi, each with a glass top on an 'X' framed mahogany stand, 86.5cm wide 45.5cm deep 49.5cm high (2) £1,000 - 1,500



452



453

Lot 453 §

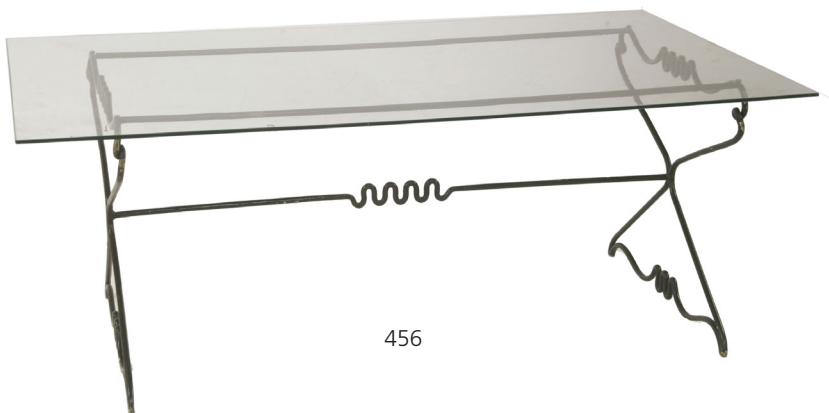
A Danish rosewood Royal wall system, designed by Poul Cadovious, 1970s, with an arrangement of shelves, cupboards and drawer units, with two wall panels (qty.)
£400 - 600

Lot 454

A pair of Macassar lounge chairs, designed by Guglielmo Ulrich, with cream cushions and panels
71.5cm wide
120cm deep
62cm high
seat 30cm high (2)
£2,000 - 3,000



454



456



455

Lot 455

A grand chandelier, probably by Barovier and Toso, with ten glass shades and ten lights, with a glass bottom,
108 x 76cm wide
117cm high
£2,000 - 3,000

Lot 456

A wrought iron and glass coffee table, 1950s, after a design by Giovanni Ferrabini,
131.5cm wide
76cm deep
51cm high
£300 - 500

§ FURNITURE MADE OF BRAZILIAN ROSEWOOD (DALBERGIA NEGRA)

To comply with CITES Regulations on post-1947 furniture made of Brazilian Rosewood, all post-war rosewood furniture items have Article 10 certificates.

If you are purchasing rosewood furniture for commercial purposes and not solely for your own use, CITES regulations require you to obtain your own certificate. You would need to contact the Animal Health and Veterinary Laboratories Agency ('AHVLA') and, as part of the process of obtaining your document, it is a requirement that you have seen sight of the Sworders' certificate or are aware of its reference number.

It is therefore the responsibility of commercial buyers to ensure that they obtain a copy of the appropriate certificate, or the certificate reference number, after purchase from Sworders Fine Art Auctioneers.

For confirmation of the certificate number, please refer to our website (www.sworder.co.uk).



458



459

Lot 457

An Italian ebonised dining table, designed by Guglielmo Ulrich, with a glass top, over a curved frieze, and supports each end united with a curved stretcher, 300cm long 93cm wide 80cm high, and a set of twelve dining chairs en suite, with white upholstery (13) £5,000 - 8,000

Lot 458

A pair of Italian armchairs, designed by Guglielmo Ulrich, with silver-grey upholstery, 90cm wide 75cm deep 90cm high (2) £1,500 - 2,000

Lot 459

A pair of buffalo leather club chairs, designed by Fredrik Kayser for Vatne Møbler, 98cm wide 78cm deep 69cm high (2) £200 - 300



457

Lot 460

A lounge chair, designed by Arne Norell for Vatne Møbler, with a reclining action on a swivel stand, 77cm wide 71cm deep 96cm high £150 - 250

Lot 461

A modern Caviuna honeywood laminated coffee table, with a rectangular glass top, 127cm wide 65cm deep 38cm high £100 - 150



460



461



462



463



464



465



466

Lot 462

A Danish leather lounge chair, 1960s, with a swivel stand, 95cm wide 78cm deep 96cm high £150 - 250

Lot 463

A Peiff dining table, the smoked glass rectangular top, raised on a chrome stand, and a set of six chrome dining chairs, with upholstered arms and seats, 160cm wide 80cm deep 71cm high (7) £300 - 500

Lot 464

An oak three-seater sofa, designed by Hans Wegner for GETAMA, 196cm wide 66cm deep 75cm high £200 - 300

Lot 465

A daybed, designed by Hans Wegner for GETAMA, 206cm wide 87cm deep 76cm high £200 - 400

Lot 466

A Danish upholstered sofa, 1950s, 129cm wide 66cm deep 75cm high £200 - 300

Lot 467

A Stouby black leather three-seater settee, 187cm wide 81cm deep 66cm high £300 - 500



467



468



469



470

Lot 468

A pair of Scandinavian lounge chairs, with stained beech details, 65cm wide 82cm deep 76cm high £200 - 300

Lot 469

A Scandinavian three-seater settee, with stained beech details, 177cm wide 78cm deep 80cm high £200 - 300

Lot 470

A nest of three Ercol 'Pebble' tables, 65.5cm wide 44.5cm deep 40.5cm high (3) £150 - 250



471

Lot 471

A set of four laminated 'ZA' rocking chairs, designed by Kenzo Taro (b.1933) for Tendo Mokko the in 1960s, with striped upholstery, each labelled 'TENDO', 54cm wide 65cm deep 48cm high (4) £400 - 600

Lot 472

A Danish teak sideboard, by Bramin Møbler, with four central drawers, sliding cupboards enclosing shelves, 225cm wide 45cm deep 79.5cm high £700 - 900

Lot 473

A German chrome desk lamp, with a wing-type shade, raised on a revolving stand, 65cm wide 38cm deep 80cm high £200 - 300



472



473



474

Lot 474

A Danish teak sideboard, by Bramin Møbler, centred with four drawers and flanked with sliding cupboards enclosing shelves, 225cm wide 45cm deep 79.5cm high £700 - 900



475



476



477



478

Lot 475

An Heal's walnut sideboard, with sliding cupboards enclosing a shelf and two sliding drawers, the ends with vertical routed details, 137cm wide 45cm deep 87cm high £400 - 600

Lot 476

A tile top dining table, the circular top with radiating patterns in orange, on a black painted stand, 150cm wide 73.5cm high £1,000 - 1,500

Lot 477

A pair of Florence Knoll side cabinets, each with marble tops, over three central drawers flanked by cupboards, 143cm wide 46cm deep 65cm high (2) £1,500 - 2,000

Lot 478

A Danish teak sideboard, designed by Peter Hvidt for Søborg Møbler, with a tambour front, flanked with five drawers, with 'Danish Makers' Furniture Control' label, 152cm wide 48cm deep 87cm high £1,000 - 1,500



479



480



481



482

Lot 479

A Gordon Russell walnut sideboard, centred with three drawers, flanked with cupboards, 141cm wide 49cm deep 85.5cm high £200 - 300

Lot 481

A teak interplan cabinet, designed by Robin Day, with sliding glass fronts enclosing a single shelf, 138cm wide 30.5cm deep 74cm high £400 - 600

Lot 482

A Danish teak bar cabinet, designed by Poul Heltborg, with a black vinyl top, over glass doors with cupboards and veneered slides below, 110cm wide 50cm deep 115cm high £300 - 500

Lot 483

A Danish teak dining table, with one end extension, 205cm wide 90cm deep 71cm high, and six dining chairs, labelled (7) £700 - 900

Lot 480

A Danish teak sofa, designed by Frem Røjle, 205cm wide 75cm deep 75cm high seat 42cm high, and another centred with a box cupboard, with woven panels, 205cm wide 75cm deep 75cm high seat 42cm high (2) £1,000 - 1,500



483



484



485

Lot 484

***Gordon Dent (b.1923)**
TEXTILE DESIGN,
Mixed media, signed and dated l.r. '58
37.5 x 55cm, framed
£150 - 200

Lot 485

***Gordon Dent (b.1923)**
TEXTILE DESIGN
Mixed media, signed and dated l.r. '58
38.5 x 55cm, framed
£150 - 200

Lot 486

A pair of lounge chairs,
designed by Eric Lyons,
65.5cm wide
80cm deep
85cm high
seat 42cm high (2)
£400 - 600

Lot 487

A pair of Falcon chairs,
designed by Sigurd Resell for Vatne
Møbler with leather seats, *labelled* (2)
£500 - 700

Lot 488

A pair of teak armchairs,
by Grimson and Slater,
72cm wide (2)
£600 - 800



486



487



488

Lot 489

A Danish teak draw-leaf table,
'JLM' branded, with plastic caps,
150cm wide
100cm deep
74cm high
266cm extending, and
six No. 78 chairs,
designed by Nils Miller, with woven
cord seats (7)
£1,000 - 1,500



489

Lot 490

A chrome coffee table,
1970s, with a rectangular glass and mirrored
top, with rounded ends, on a chrome plinth,
124.5cm wide
72cm deep
37cm high
£250 - 350



490

Lot 491

A Danish teak draw-leaf table,
150cm wide
100cm deep
74cm high, and
four No. 79 chairs,
designed by Niels O Møller for JL Møller
Møbelfabrik, with upholstered seats (5)
£600 - 800



491

Lot 492

Ten Alvar Aalto ebonised stools,
2014, by Artek,
65cm high (10)
£600 - 800



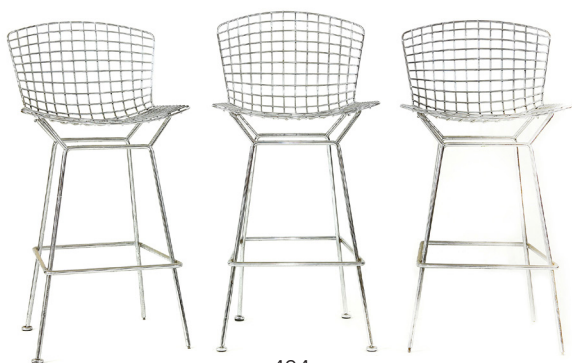
492

Lot 493

A Danish teak desk chair,
designed by Peter Hvidt for
France & Søn
£200 - 300



493



494



495

Lot 494

Three chrome stools, after a design by Harry Bertoia, Knoll Editions, lacking caps (3)
£250 - 350

Lot 495

A set of eight teak dining chairs, designed by Arne Vodder for Sibast Furniture (8)
£600 - 800



496



497



498

Lot 496

A pair of Italian chairs (2)
£200 - 300

Lot 497

A chrome and brass-mounted dining suite, by Renato Zevi Furniture, comprising:
a dining table, with a smoke glass top, 200cm long 100cm deep, and eight armchairs, with turquoise upholstery and brass supports, 54.5cm wide 52cm deep 80cm high seat 45cm high (9)
£600 - 800

Lot 498 §

A Gordon Russell rosewood sideboard, with an arrangement of four drawers and four cupboards with a shaped front, 205.5cm wide 48.5cm deep 81cm high
£250 - 350

§ FURNITURE MADE OF BRAZILIAN ROSEWOOD (DALBERGIA NEGRA)

To comply with CITES Regulations on post-1947 furniture made of Brazilian Rosewood, all post-war rosewood furniture items have Article 10 certificates.

If you are purchasing rosewood furniture for commercial purposes and not solely for your own use, CITES regulations require you to obtain your own certificate. You would need to contact the Animal Health and Veterinary Laboratories Agency ('AHVLA') and, as part of the process of obtaining your document, it is a requirement that you have seen sight of the Sworders' certificate or are aware of its reference number.

It is therefore the responsibility of commercial buyers to ensure that they obtain a copy of the appropriate certificate, or the certificate reference number, after purchase from Sworders Fine Art Auctioneers.

For confirmation of the certificate number, please refer to our website (www.sworder.co.uk).



499



502



500

Lot 499

A circular glass coffee table, with a mirrored edge, over a chrome stand, 112cm diameter 40cm high £200 - 300

Lot 500

A pair of brass side chairs, with turquoise upholstery, 48cm wide 45.5cm deep 112.5cm high seat 48cm high (2) £150 - 200

Lot 502

A seven-light hanging chandelier, 1970s, in two tiers of clear mottled oval tubes and triform clear and amber glass shades, 93cm high overall 39cm diameter £250 - 350

Lot 503

An unusual bronze sculpture, of globe form, with lateral fin details, on a tapering stand, 107cm high approximately 58cm diameter £200 - 300

Lot 501

A large twelve-piece panel picture, with etched designs of trophies and armour, in a brass-mounted frame, 184.5cm wide 135.5cm high £250 - 300



501



503



505



504

Lot 504 \$

A rosewood sideboard,
Florence Knoll for Herman Miller, with a marble top, on
a chrome frame with a maple interior, *lacking one handle*,
raised on chrome supports,
190cm wide
45cm deep
65.5cm high
£300 - 500

Lot 505

A large painted panel,
depicting lutes, a sphere and a book on a cloth in gold
with incised details,
83cm wide
207.5cm high
£200 - 300

Lot 506

A Hillestak table,
designed by Robin Day, with a
walnut top, labelled 'Hille of London',
131cm wide
61cm deep
71cm high, and
four chairs,
with original green upholstered
back and seats, *three labelled*
'Hille London' (5)
£600 - 800

Lot 507

Two Jason 'C2' chairs,
designed by Carl Jacobs for
Kandya, labelled 'Kandya Regd
Design 871266' (2)
£200 - 300

Lot 508

A Stag 'S' Range table,
designed by John and Sylvia Reid,
130cm extended
91.5cm wide
69cm high, and
a set of four chairs (5)
£400 - 600



506



507



508

Lot 509

A Peiff dining table,
the circular glass top, raised on
an octagonal drum plinth,
150cm diameter
71cm high, and
six chrome dining chairs (7)
£400 - 600



509

Lot 510

Four Danish dining chairs,
branded 'Stalmobler', and
a Hille dining table,
labelled,
151.5cm wide
75.5cm deep
71.5cm high (5)
£300 - 500



510

Lot 511

A pine 'Donkey II' bookcase,
after a design by Ernest Race,
55cm wide
39cm deep
41cm high
£100 - 150

Lot 512

A model 401 lounge armchair,
designed by Alvar Aalto in 1933,
with red upholstery,
62cm wide
80cm deep
89cm high
£600 - 800

Lot 513

A Luxus teak-framed and
steel-mounted mirror,
labelled 'Luxus, Sweden',
46.5cm wide
51cm high
£100 - 150



511



512



513



514



515



516



517

Lot 514

A Danish stained two-seater settee, designed by Arne Vodder for France & Daverkosen, labelled, 120cm wide 78cm deep 30cm high seat 42cm high £400 - 600

Lot 515

A 'Saturn' lounge chair, designed by Yrjö Kukkapuro, labelled 'Haimi made in Finland Design by Yrjö Kukkapuro', 81cm wide 85cm deep 78cm high seat 42cm high £400 - 600



518



519

Lot 516

A Danish teak Minerva coffee table, designed by Peter Hvidt & Orla Mølgaard-Nielsen, with two tiers, branded and with France & Søn button, 77cm square 64cm high £200 - 300

Lot 517

A cone chair, designed by Verner Panton, in need of restoration £100 - 150

Lot 518

A birch laminated circular table, designed by Alvar Aalto, with a black top, labelled 'Finmar Ltd.', 127cm diameter 72cm high £400 - 600

Lot 519

A pair of contemporary 'Space Invader' armchairs, 101cm wide 51cm deep 99cm high seat 40cm high (2) £300 - 500



520



521

§ FURNITURE MADE OF BRAZILIAN ROSEWOOD (DALBERGIA NEGRA)

To comply with CITES Regulations on post-1947 furniture made of Brazilian Rosewood, all post-war rosewood furniture items have Article 10 certificates.

If you are purchasing rosewood furniture for commercial purposes and not solely for your own use, CITES regulations require you to obtain your own certificate. You would need to contact the Animal Health and Veterinary Laboratories Agency ('AHVLA') and, as part of the process of obtaining your document, it is a requirement that you have seen sight of the Sworders' certificate or are aware of its reference number.

It is therefore the responsibility of commercial buyers to ensure that they obtain a copy of the appropriate certificate, or the certificate reference number, after purchase from Sworders Fine Art Auctioneers.

For confirmation of the certificate number, please refer to our website (www.sworder.co.uk).



522

Lot 520

A lounge chair,
1970s, designed by Pierre Paulin
for Artifort, *labelled*,
60cm wide
77cm deep
91cm high
seat approximately 36cm high
£400 - 600

Lot 521 §

A rosewood desk,
1960s, designed by Ole Wanscher,
with a plain top flanked with four
drawers each side, fitted with brass
swan neck handles,
161cm wide
81cm deep
75cm high
£400 - 600

Lot 522

A chrome and marble coffee table,
with a circular top,
99.5cm diameter
50cm high
£250 - 350

Lot 523

A wire cone chair,
after a design by Verner Panton
£100 - 150



523



524

Lot 524
A DSW chair seat,
1960s, 2nd generation designed
by Charles & Ray Eames, now
on a recent stand
£100 - 150

Lot 525
A Danish teak series 7 chair,
designed by Arne Jacobsen
£100 - 150

Lot 526
A C2 Jason chair,
designed by Carl Jacobs for Kandya,
labelled
£100 - 150



525



526



528



529

Lot 527
A Danish teak sideboard,
by Drylund, with five central drawers flanked
with cupboards, enclosing shelves,
220cm wide
47cm deep
80cm high
£600 - 800

Lot 528
A glass ceiling light,
designed by Carlo Nason for Mazzega,
fitted with mottled glass petal shades,
65cm diameter
£150 - 200

Lot 529
A pair of ceiling lights,
designed by Jo Hammerborg for Fog and
Mørup,
46.5cm high (2)
£100 - 150



527



530

Lot 530

Attributed to Albert Guibara (b.1944)
THE SPIRIT ROCK
a metal sculpture
52 x 76cm
£150 - 200

Lot 531

*Saraj Guha (b.1966)
'NINE ROUNDS'
An oil drum lid sculpture with wall
mount fittings
each 60cm diameter approximately,
4cm to 11cm deep (9)
£600 - 800

Lot 532

A pink tinted glass wall mirror,
76cm wide
97cm high
£150 - 250



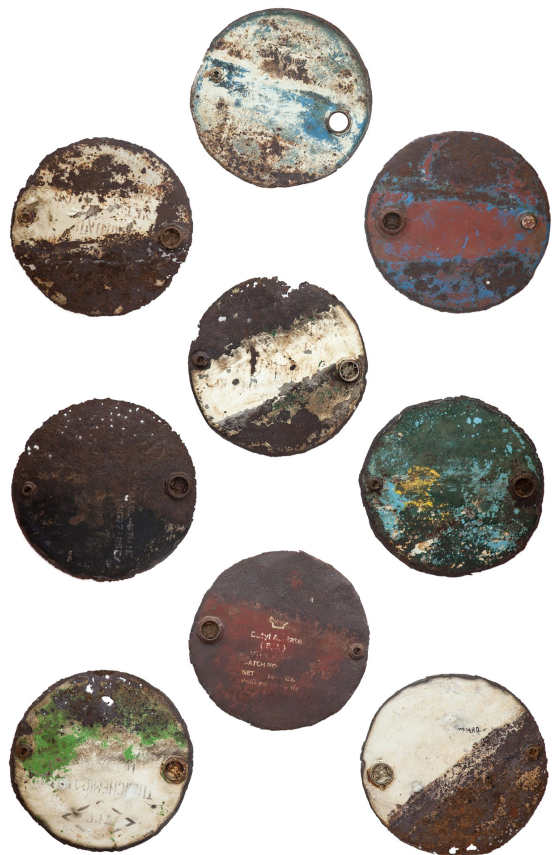
532

Lot 533

A marble dining table,
1970s, the circular top over
a tubular stand,
160cm diameter
73cm high
£250 - 350

Lot 534

An Italian office desk cabinet,
designed by Osvaldo Borsani,
320cm wide
46cm deep
82cm high
£400 - 600



531



533



534



535



536



537



538



539

Lot 535

An ebonised chest of drawers, designed by Milo Baughman, with twelve drawers, 168cm wide 47cm deep 80cm high £250 - 350

Lot 536

A pair of armchairs, 1950s, with brown wool upholstery, 68cm wide 81cm deep 77cm high seat 43cm high (2) £200 - 300

Lot 537

A Merrow Associates' dining table, the circular glass top, raised on a chrome stand, 116.5cm diameter 71cm high, and a set of four dining chairs, each with an oatmeal upholstered seat and backs (5) £300 - 500

Lot 538

An Afromosia daybed, by Greeves and Thomas, with grey upholstery, 204cm wide 80cm deep 72cm high seat 40cm high £300 - 500

Lot 539

A pair of Florence Knoll side cabinets, with marble tops, over three central drawers flanked by cupboards, 143cm wide 46cm deep 65cm high (2) £1,500 - 2,000

Lot 540

Tamara Capellaro (contemporary) A WIRE MESH HANGING SCULPTURE OF A FACE 61cm high, suspended in a clear perspex case, on a white perspex plinth 166cm high overall £150 - 250



540



541

Lot 541

A quartz boulder table lamp,
on a brass plinth,
33.5cm high
£600 - 800

Lot 542

A chrome and teak low coffee table,
by Howard Miller for MDA, with square
supports to either end, *labelled*,
153cm wide
61cm deep
42cm high
£200 - 300

Lot 543 §

A nest of three rosewood and chrome tables,
1970s, in the style of Merrow Associates, the
largest with drop flaps, on chrome sledges stands,
71cm wide
49cm deep
43cm high (3)
£200 - 300

Lot 544

A brass and cream-painted arrow chandelier,
attributed to FontanaArte, with eight lights, fitted
with clear glass shades,
95cm high
£1,000 - 1,500



544

§ FURNITURE MADE OF BRAZILIAN ROSEWOOD (DALBERGIA NEGRA)

To comply with CITES Regulations on post-1947 furniture made of Brazilian Rosewood, all post-war rosewood furniture items have Article 10 certificates.

If you are purchasing rosewood furniture for commercial purposes and not solely for your own use, CITES regulations require you to obtain your own certificate. You would need to contact the Animal Health and Veterinary Laboratories Agency ('AHVLA') and, as part of the process of obtaining your document, it is a requirement that you have seen sight of the Sworders' certificate or are aware of its reference number.

It is therefore the responsibility of commercial buyers to ensure that they obtain a copy of the appropriate certificate, or the certificate reference number, after purchase from Sworders Fine Art Auctioneers.

For confirmation of the certificate number, please refer to our website (www.sworder.co.uk).



542



543



545



546



547



548

Lot 545

A pair of butterfly chairs,
with strung burgundy leather seats,
104cm wide
104cm deep
86cm high (2)
£300 - 500

Lot 546

A Ladderax drop-leaf teak table,
125cm open
78cm wide
73cm high, and
two armchairs,
with slung leather armchairs (3)
£200 - 300

Lot 547

A pair of chairs,
designed by Robert Heritage
for Ernest Race Furniture,
60cm wide
52cm deep
78cm high (2)
£200 - 300

Lot 550

A Danish coffee table,
designed by Sven Ellekaer
for Christian Linneberg
Møbelfabrik, with a
rectangular glass top,
160cm wide
64cm deep
47cm high
£300 - 500

Lot 548

A pair of Italian
twin-branch wall lights,
1960s, by Stilnovo,
20cm wide
10cm deep
30cm high (2)
£200 - 300

Lot 551

A gilt 'O' letter,
removed from
Sea Containers House on
the London South Bank,
101cm high
£200 - 300

Lot 549

A Stouby black leather
three-seater settee,
187cm wide
81cm deep
66cm high
£300 - 500



549



550



551

Lot 552

A pair of shop mirrors,
each with brushed brass frames, fitted with
LED lights to the reverse, removed from
a Bond Street shop,
87cm wide
11cm deep
200cm high (2)
£400 - 600

Lot 553

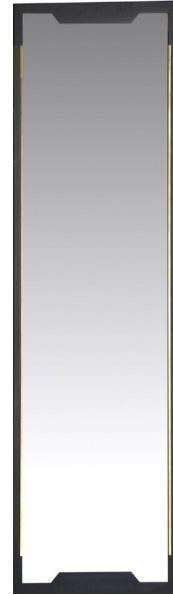
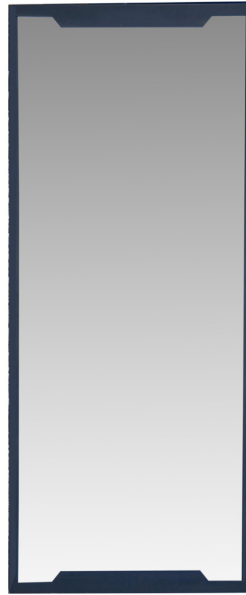
A pair of shop mirrors,
each with brushed brass frames, fitted with
LED lights to the reverse, removed from
a Bond Street shop,
60cm wide
7cm deep
210cm high (2)
£400 - 600

Lot 554

A brass and chrome console table,
the glass top over a marble diamond-shaped
panel,
120cm wide
40cm deep
86.5cm high
£400 - 600



552



553



554



555

Lot 555

A pair of chrome lounge chairs,
designed by Francois Scali and Alain Domingo,
68cm wide
98cm deep
78cm high
seat 41cm high (2)
£1,000 - 1,500

Lot 556

A contemporary olivewood garden suite,
each piece with slatted supports,
comprising:
a pair of armchairs,
58cm wide,
a table,
98.5cm wide,
a settee
150cm wide (4)
£600 - 800



556



557

Lot 557

A pair of leather lounge chairs by Percival Lafer for Lafer Moveis, Sao Paulo, each raised on mahogany and chrome frames, 75cm wide 86cm deep 71cm high seat 45cm high (2) £600 - 800

Lot 558

A pair of ash lounge chairs, designed by Gio Ponti and manufactured by Cassina, after the originals for Hotel Parco dei Principe, 70.5cm wide 76 cm deep 103.5cm high seat 39cm high (2) £1,000 - 1,500



558

Lot 559

A pair of chrome and glass wall lights, attributed to Angelo Brotto for Esperia, 64cm wide 9.5cm deep 55cm high (2) £200 - 300

Lot 560

A contemporary studio light, mounted with three glass panels, one glass panel loose, 182cm high £200 - 300



560

Lot 561

A Danish teak cabinet, designed by Børge Mogensen, the sliding cupboards enclosing shelves and four drawers, 150cm wide 46.5cm deep 87cm high £400 - 600



561



559

Lot 562

A teak 'Mosquito' table,
designed by Hans Wegner for Fritz Hansen,
120cm diameter,
69cm high, and
four chairs,
labelled and numbered '0963, 1263' (5)
£1,000 - 1,500



562

Lot 563

A Narra wood centre table,
by Alex Cayet, *with a rectangular glass top not shown*,
200cm wide
120cm deep
55cm high
£1,500 - 2,000



563

Lot 564

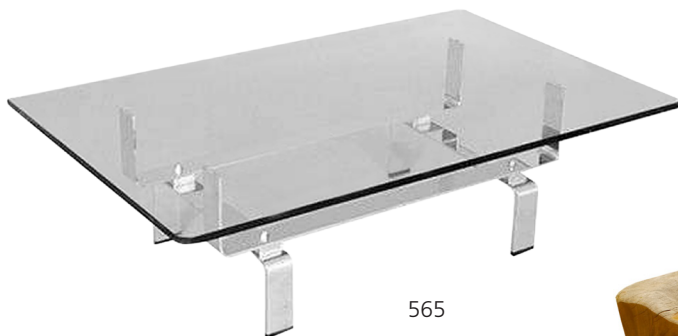
Four contemporary Italian chairs,
c.1980-90, designed by Mario Botta,
54cm wide
67cm deep
80cm high
seat 42.5cm high (4)
£400 - 600



564

Lot 565

A chrome and glass coffee table,
120cm wide
75cm deep
36cm high
£250 - 350



565

Lot 566

A mahogany wood bench or centre table,
by Alex Cayet,
180cm wide
120cm deep
38cm high
£1,500 - 1,800



566



567

Lot 567

A Rolls-Royce Trent 800 titanium turbine fan blade, showing evidence of bird strike and associated ripple to the reverse, later mounted on a light-up display stand, blade approximately 101cm long overall 190.5cm high
£400 - 600



568

Lot 568

A Boeing 747-400 B-HUI Cathay Pacific Airways pilot's seat, IPECO part no. 3A090-0053-02-1, date of manufacture 25.3.93, 57.5cm wide 82cm deep 107cm high, on a later plinth
£2,000 - 3,000

The airframe of this Boeing was decommissioned and scrapped in 2017.

Lot 569

A narrowwood table, by Alex Cayet 170cm wide 130cm deep 80cm high
£1,000 - 1,500

Lot 570

A glass coffee table, designed by Marco Zanuso, with a circular glass top, raised on chrome legs, 110cm diameter 37cm high
£150 - 200

Lot 571

A French bronze 'Tusk' coffee table, with a rectangular glass top, 178cm wide 107cm deep 38cm high approximately
£1,000 - 1,500

Lot 572

A pair of oak lounge chairs designed by Guillerme et Chambron, each with upholstered beige back and seat, with spindle back supports, 68cm wide 90cm high seat 46cm high (2)
£1,000 - 1,500



569



571



570



572

Lot 573

A pair of Italian Model 512 armchairs, after a design by Gio Ponti, each reupholstered in light blue, with ebonised supports, 70cm wide 80cm deep 98cm high seat 45cm high (2) £1,500 - 2,000

Lot 574

An Italian Model 512 settee, after a design by Gio Ponti, reupholstered in light blue, with ebonised supports, 198cm wide 80cm deep 98cm high seat 45cm high £1,500 - 2,000



573

Lot 575

A maple or sycamore 'Sunburst' cupboard, 1960s, of concave form with three cupboards, over three drawers, 230cm wide 60cm deep 189.5cm high £400 - 600

Lot 576

An Aldo Tura 'book' cocktail cabinet, 1960s, printed and stained goatskin over a wood frame with a removable tray to the top, enclosing a mirror interior with a light, over a drawer with a medallion as a handle, 58.5cm wide 36cm deep 122cm high £2,000 - 3,000



574



576

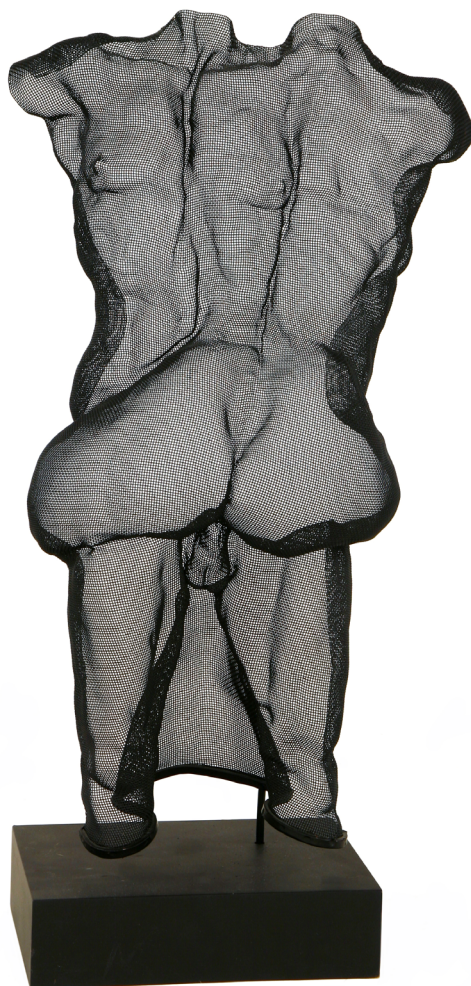


575



577

Lot 577
 *David Begbie ARBS (b.1955)
 'DOUBLE UP 1', 1995
 Steel mesh, signed to the plinth
 69cm high
 £600 - 800



578

Lot 578
 *David Begbie ARBS (b.1955)
 'COUPLE', 1995
 Steel mesh
 59cm high
 £600 - 800



579

Lot 579
 *David Begbie ARBS (b.1955)
 'STANDING GIRL', 1995
 Steel mesh sculpture
 91cm high
 £1,000 - 1,500

Lot 580

A Model N71 lamp,
originally designed by Eileen Grey
for A Jumo,
40cm high
£200 - 300



580

Lot 581

A pair of Italian wall lights,
each with a frosted shade
with etched feather details,
on a brass and painted
mount,
21.5cm wide
40.5cm high (2)
£250 - 350



581

Lot 582

**A pair of contemporary
table lamps,**
by Briloner Leuchten,
30cm high (2)
£150 - 200



582

Lot 583

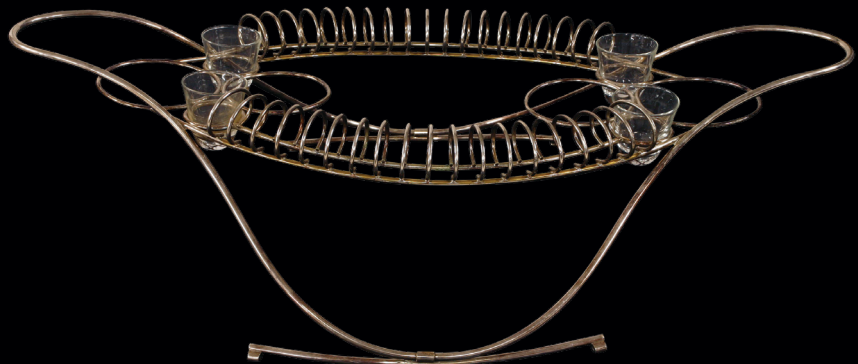
***Lucio del Pezzo(b.1933)**
TRIGON 1974,
Unsigned, _____
wooden? sculpture, probably
a FramArt Studio Edition,
25cm wide
25cm deep
28cm high
£300 - 500



583

Lot 584

An Italian silver-plated table centre,
of oval form, fitted with four glass
beakers,
81cm wide
45cm deep
21cm high
£200 - 300



584



585

Lot 585

An Italian brass six-light electrolier, mounted with etched shallow shades, with three further lights to the centre, fitted with a further shallow shade, 58cm diameter 80cm high
£350 - 450



586

Lot 586

A pair of wall lights, by Punto Luce, Murano, of semicircular design, *labelled*, 38cm wide
£150 - 200



587

Lot 587

A pair of Italian four-branch wall lights, each with vaseline glass shades, 30cm wide 10cm deep 18cm high (2)
£150 - 200

Lot 588

A cedar plank coffee table, on strut legs, labelled 'Reynolds of Ludlow', 125cm wide 52cm deep 40cm high
£150 - 200



588

Lot 589

A Timebeam Classic Analogue Dial Shadow clock, manufactured by Design Ltd., 25cm wide
£150 - 250



Lot 590

A Daydream 'Cobra' table lamp, with a red enamelled shade, 41cm high
£100 - 150



590



589

Lot 591

A set of four corner stands, of triangular form, with glass tops, each mounted with bands of music, 71cm wide 36cm deep 112cm high (4) £500 - 600



591

Lot 592

A contemporary 'Centaur' centre table designed by Pete Carlin, with a walnut plank raised on steel and stone supports, 128cm wide 85cm deep 48cm high £600 - 800



592

Lot 593

A coffee table, with a bevelled glass top, raised on a Lucite and brass stand, 130cm wide 80cm deep 41cm high £200 - 400



593

Lot 594

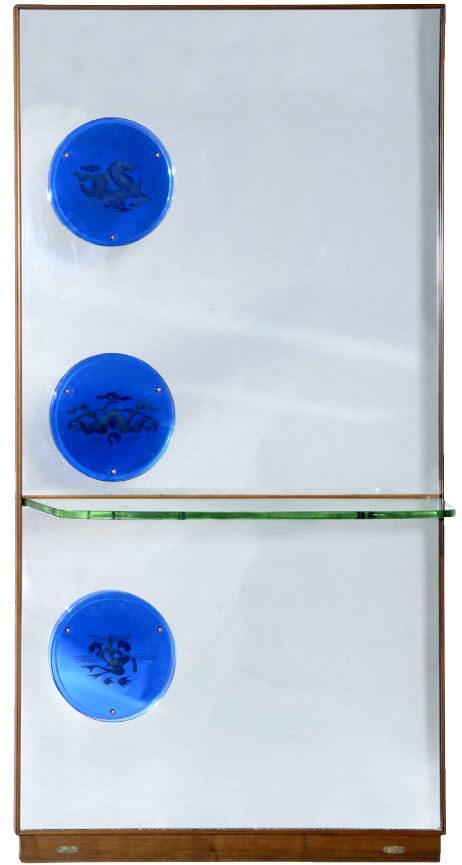
After Harry Bertoia, A KINETIC WIRE SCULPTURE On a heavy steel plinth 187cm high £600 - 800



594

Lot 595

A massive glass wall mirror, possibly by FontanaArte, mounted with bevelled blue glass roundels, with mermaids, fish and seahorses, the roundels illuminated with a shelf, the underside with star motifs, 112cm wide 218cm high 25cm deep £1,500 - 2,500



595

Lot 596

A Stouby tan leather three-seater settee, 199cm wide 81cm deep 93cm high £300 - 500



596



597



598 one of a pair



600



599

Lot 597

***Alun Heslop (b.1971),**
'THE BOAR', an imaginary hunting vehicle for
 the 21st century - the corporate headhunter
 A unique chair sculpture, oak, sweet chestnut
 and steel
 290cm wide
 85cm deep
 80cm high
£800 - 1,200

Lot 598

A pair of 'Saturn' wall sconces,
 attributed to FontanaArte,
 45cm diameter (2)
£400 - 600

Lot 599

A modern Italian chandelier,
 the octagonal chrome frame supporting
 forty interlinking glass rod shades, fitted
 with eight lights,
 120cm diameter
 120cm high
£2,000 - 3,000

Lot 600

D*Face and Steve Watson,
 a steel bookcase, 2008, designed and
 limited to 9, laser cut details, powder
 coated, *signed*,
 30cm wide
 100cm high
£300 - 500

Lot 601

An Italian Murano glass chandelier,
mounted with freeform clear
and tinted glass panels/shades,
52cm diameter
115cm high
£1,000 - 1,500



601

Lot 602

A steel console table,
1970s, with a marble top, the
stand a continuous tubular frame,
108cm wide
49.5cm deep
77cm high
£1,000 - 1,500



602

Lot 603

A pair of side tables,
1970s, each with two glass
tiers with gold frames,
110cm wide
70cm deep
72cm high (2)
£500 - 800



603

**Lot 604 §**

A rosewood Pica range sofa
and armchair,
1960s, designed by Max Clendinning
for Race Furniture, the rosewood
veneered frames with black
cushions, the sofa a modular unit
of three pieces, labelled 'Designer
Max Clendinning Manufactured by
Race Furniture, 15 Rathbone Street,
London W1, England',
sofa 210cm wide
75cm deep
72cm high approximately,
armchair 86cm wide
70cm deep
72cm high (4)
£600 - 800



604



605



606

Lot 605

An Italian Ministry table lamp, with a shallow chrome shade, two lights, on a ball socket plinth, 42cm high
£150 - 200

Lot 606 S

A Danish rosewood desk, designed by Arne Vodder, with three drawers either side, with open shelves to the reverse, 143cm wide 75cm deep 71cm high
£600 - 900



607



608

Lot 607

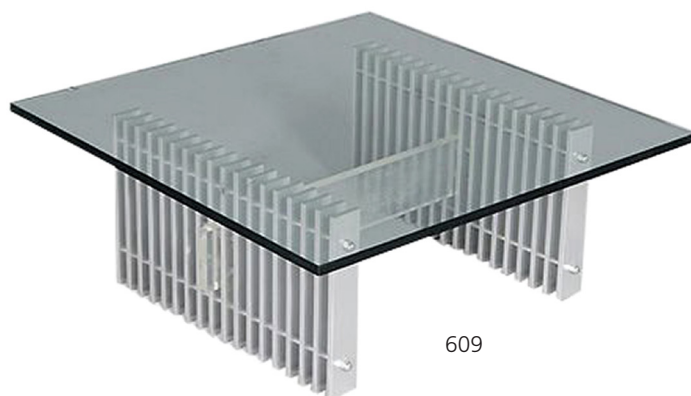
An Italian goatskin and lacquered coffee table, 75cm diameter 62cm high, and a magazine rack, with painted goatskin lacquered panels, on a brass frame, 51cm wide (2) 40.5cm high (2)
£200 - 400

Lot 608

A large Edward Fields wool rug, in cream, pink and green, 500 x 410cm
£250 - 350

Lot 609

An aluminium and glass 'radiator' coffee table, 75cm wide 75cm deep 55cm high (2)
£150 - 250



609

S FURNITURE MADE OF BRAZILIAN ROSEWOOD (DALBERGIA NEGRA)

To comply with CITES Regulations on post-1947 furniture made of Brazilian Rosewood, all post-war rosewood furniture items have Article 10 certificates.

If you are purchasing rosewood furniture for commercial purposes and not solely for your own use, CITES regulations require you to obtain your own certificate. You would need to contact the Animal Health and Veterinary Laboratories Agency ('AHVLA') and, as part of the process of obtaining your document, it is a requirement that you have seen sight of the Sworders' certificate or are aware of its reference number.

It is therefore the responsibility of commercial buyers to ensure that they obtain a copy of the appropriate certificate, or the certificate reference number, after purchase from Sworders Fine Art Auctioneers.

For confirmation of the certificate number, please refer to our website (www.sworder.co.uk).

GLOSSARY OF PICTURE CATALOGUING TERMS

A work catalogued with the forename(s) and surname of a recognised destination of an artist is or is probably a work by the artist, eg. David Cox. Nevertheless, intending buyers are reminded that while a full designation is our highest category or authenticity, no unqualified statement as to the authorship is made or intended. A full cataloguing does not necessarily imply a full warranty.

Attributed to David Cox

in our opinion a work of the period of the artist which may be in whole or in part the work of the artist.

Circle of David Cox

in our opinion a work from the period of the artist and showing his influence.

Follower of David Cox

in our opinion a work executed in the style of David Cox

After David Cox

in our opinion a copy of any date after a work by the artist

Signed/inscribed/dated

in our opinion the work has been signed/inscribed/dated by the artist

Bears/with signature, inscription, date

in our opinion the signature/inscription/date are not by the hand of the named artist.

The addition of a question mark (?) after any of the above cataloguing terms indicates an element of doubt.

A work catalogued as 'School' accompanied by the name of a place or country and a date means that in our opinion the work was executed at that time and in the location, eg. South Netherlands School, circa 1750.

All references to signatures, inscriptions and dates refer to the present state of the work, ie. as at the time of inspection for the purpose of cataloguing.

Condition reports are not included in the descriptions.

ARTIST'S RESALE RIGHT (ARR)

What is Artist's Resale Right?

Following a European Directive in 2006, the Artist's Resale Right entitles creators of original works of art to a royalty each time their work is resold, with the involvement of an auction house, for 1,000 Euros or more.

This right covers sales of work by living artists and also the beneficiaries and heirs of artists deceased within the last 70 years of the sale.

How are resale royalties calculated?

The artist's royalty depends on the hammer price (sale price without any VAT or Buyer's Premium). The higher the sale price of the artwork, the lower the overall royalty rate. The royalty is worked out according to a sliding scale from 4% to 0.25%.

Hammer Price	Royalty
From 0 to €50,000	4%
From €50,000.01 to €200,000	3%
From €200,000.01 to €350,000	1%
From €350,000.01 to €500,000	0.5%
Exceeding €500,000	0.25%

What is the qualifying threshold?

An artwork must sell for more than €1,000 to qualify for a royalty. The law defines the price threshold in Euros and, because the exchange rate between the two currencies changes daily, the equivalent in Pounds Sterling must be worked out according to the exchange rate on the date the artwork was sold.

What nationality must an artist be to qualify?

The Artist's Resale Right applies to the sale of artworks in the European Economic Area (EEA). The following countries are in the EEA:

Austria, Belgium, Bulgaria, Cyprus, Czech Republic, Denmark, Estonia, Finland, France, Germany, Greece, Hungary, Iceland, Ireland, Italy, Latvia, Liechtenstein, Lithuania, Luxembourg, Malta, Netherlands, Norway, Poland, Portugal, Romania, Slovak Republic, Slovenia, Spain, Sweden, United Kingdom.

Artists who are nationals of these countries are therefore generally eligible to receive resale royalties. The nationality criteria only applies to the artist and not to the beneficiaries or heirs.

Are all sales of artwork covered?

The Artist's Resale Right does not apply to all sales of artworks. A royalty is only due if the following conditions are met:

- the artwork is a copyright protected work of graphic or plastic art;
- it is sold for more than €1000;
- it is sold in the secondary market with the involvement of an art market professional (e.g. auction house);
- and it is sold in the UK or another country in the European Economic Area (EEA).

This royalty, where applicable, will be charged to the purchaser. It is exempt of VAT.

If you are unable to attend the sale we are happy to execute bids on your behalf. This service is free and confidential.

- If you successfully purchase a lot, or lots, we will forward an invoice shortly after the sale by email or within 3 working days by post. We recommend that you check the success of your bids after the sale on our website.

- Where we receive more than one bid of the same value, the one received first will take precedence.
- Where appropriate, your bids will be rounded down to the nearest amount consistent with the Auctioneer's bidding increments.
- Please note our post is not delivered until midday, therefore postal bids need to reach us on the day preceeding the sale.
- We draw attention to our full terms and conditions on our website.

Received

Date: _____

Time: _____

By: _____

Entered

Date:
Time:
By:
Bid No.

Forward to:
SWORDERS FINE ART AUCTIONEERS,
CAMBRIDGE ROAD, STANSTED MOUNTFITCHET,
ESSEX CM24 8GE
TEL: 01279 817778 FAX: 01279 817779
www.sworder.co.uk

NAME: _____

TITLE: INITIALS: CLIENT NO.

ADDRESS: _____

POSTCODE: TEL (DAYTIME)

[illegible]

Please bid on my behalf for the above mentioned lots up to the limits shown, without legal obligation to Sworders, its staff or agents, or without prejudice to Sworders standard Terms and Conditions printed in this catalogue.

Signed:

Date: _____



INFORMATION FOR BUYERS

Introduction

The following notes are intended to assist bidders and buyers, particularly those that are inexperienced or new to our salerooms. All of our auctions are governed by our Conditions of Business incorporating the Terms of Consignment (primarily applicable to sellers), the Terms of Sale (primarily applicable to bidders and buyers) and any notices that are displayed in our salerooms or announced by the auctioneer at the auction. Our Conditions of Business are available for inspection at our salerooms and the Terms of Sale are printed in the back of our auction catalogues. Our staff will be happy to help you if there is anything in our Conditions of Business that you do not fully understand.

Please make sure that you read our Terms of Sale set out in this catalogue or on our website carefully before bidding in the auction. If your bid is successful, you will be obliged to comply with our Terms of Sale.

Methods of Payment

Lots must be paid for before they are collected. For those attending the auction we ask that lots are paid for on the day of the sale. Methods by which we accept payment are detailed on our web site, including online payment upon receipt of your invoice, and these should be paid by 5pm on the Friday following the sale. We accept cash to an upper limit of 10,000 euros equivalent. We accept credit card payments to an upper limit of £5,000. Usually any cheques will need to be cleared before you can take the goods away.

Collection and storage

All lots should be paid for and collected by 5pm on the Friday following the sale. Commission bidders should check the success of their bids and arrange payment and collection within this time. Please note what the Terms of Sale say about collection and storage. Items not removed by 5pm on Friday may be removed at the purchaser's expense and storage charges of £10 as an administration fee and £2 per lot per day may be charged (plus vat). Please note that we will apply these charges strictly to Furniture purchased in our Homes and Interiors Sales.

Dispatch

We are rarely able to pack and dispatch purchases. A choice of shippers is detailed on our web site.

Agency

As auctioneers we usually act on behalf of the seller whose identity, for reasons of confidentiality, is not normally disclosed. If you buy at auction your contract for the goods is with the seller, not with us as auctioneer.

Estimates

Estimates are designed to help you gauge what sort of sum might be involved for the purchase of a particular lot. Estimates may change and should not be thought of as the sale price. The lower estimate may represent the reserve price (the minimum price for which a lot may be sold) and will not be below the reserve price. Estimates do not include the buyer's premium or VAT (where chargeable). Estimates are prepared some time before the auction and may be altered by a saleroom notice or announcement by the auctioneer before the auction of the lot. They are not definitive.

Buyer's Premium

The Terms of Sale oblige you to pay a buyer's premium at 23% on the hammer price of each lot purchased, except for our Fine Wine and Port auctions when it is 15%. In addition, VAT is charged on these premiums (see below).

VAT

Items in our catalogue may be marked with a dagger † or double dagger ‡, which indicates that VAT is payable by the buyer on the hammer price and the buyer's premium at either the standard rate (currently 20%) or a reduced rate (currently 5%), depending upon the legal requirements relating to that lot.

Lots which do not have either of the above symbols have no VAT payable on the hammer price. This is because such lots are sold using the Auctioneers' Margin Scheme. The VAT included within the premium is not recoverable as input tax.

Inspection of goods by the buyer

As we act on behalf of the seller, we are dependent on information provided by the seller about their goods. We may inspect lots and will act reasonably in taking a general view about them. However, we are normally unable to carry out detailed examinations of lots to check their condition in the way a buyer would do. You will have ample opportunity to inspect the goods. You must inspect and investigate lots that you might wish to bid for. **Please note carefully the exclusion of liability for the condition of lots set out in the Terms of Sale at clause 12.4.**

Condition Reports

We may be able to assist buyers unable to view by emailing a condition report, but these are based solely on our own opinion and are for guidance only and no responsibility is accepted for their accuracy. Intending buyers are strongly encouraged to view. Condition reports cannot be prepared on the day of the sale.

Electrical goods

These are sold as "antiques" only. If you buy electrical goods for use you must ask a qualified electrician to check them for compliance with safety regulations before you use them.

Export of goods

If you intend to export goods you must find out:

- whether an export licence is needed; and
- if there is a prohibition on importing goods of that character e.g. because the goods contain prohibited materials such as ivory.

Bidding

Bidders will be required to register with us before the auction starts. We reserve the right to impose a deadline prior to the auction by which you must register or by which we must receive a commission bid. If you wish to bid on high value lots this deadline may be several days before the auction in order to allow us sufficient time to carry out the necessary checks. Lots will be invoiced to the name and address on the registration form. You will need to provide us with proof of your identity in a form acceptable to us and such other information as we may require. Please enquire in advance about our arrangements for telephone or online bidding. Please note that we may refuse to register you if you do not provide us with all the information and documentation that we ask for or at our discretion.

Commission bidding

You may leave commission bids with us indicating the maximum amount to be bid against a lot (excluding the buyers' premium and/or any applicable VAT). We will execute commission bids as cheaply as possible having regard to the reserve (if any) and competing bids. If two buyers submit identical commission bids we may prefer the first bid received (where this can be reasonably ascertained). We recommend leaving commission bids online via our website, though please contact us about leaving bids by telephone or fax/email. All absentee bids should be received at least 30 minutes before the auction commences; we cannot guarantee to execute commission bids received after this time.

Telephone Bidding

If you are unable to come to the auction it may be possible to bid on the telephone for higher value lots. Please note that this service is for lots with an estimate of £500 or more. The number of lines is limited so we would urge serious telephone bidding only and ask that you be prepared to bid over the top estimate. It is advisable to leave a maximum covering bid in case we are not able to contact you by telephone. All lines must be booked and confirmed in writing before the day of the auction and preferably some time in advance. Telephone bidding involves many variables and whilst we take every care to ensure the smooth operation of this service, we cannot be held liable if your bids are missed for any reason.

Online Bidding

Any lots purchased via a live online bidding service will be subject to an additional commission charge on the hammer price payable by the bidder, in accordance with rates specified by the online service. From 1 November 2018 these charges will be charged at 3% plus VAT while bidding via the Sworders website. If bidding through the-saleroom.com this will be charged at 4.95% plus VAT. Both charges will be payable to us on top of the hammer price and our buyer's commission.

IMPORTANT NOTICES

Removal of lots

ALL lots are to be removed from the premises by **5.00pm at the latest on the Friday following each sale**. Sworders retain the right to remove lots remaining after this time into safe storage, for which a charge will be made.

Electrical Goods

All electrical goods offered in this sale have either been tested and certified safe or unsafe by an appropriately qualified electrician. All electrical goods certified safe must be re-commissioned by an appropriately qualified electrician and we recommend those certified safe are similarly re-commissioned.

Post 1950 Upholstered Furniture

All items of furniture included in this sale are offered for sale as works of art. The items may not comply with the Furniture and Furnishings (Fire) Safety Regulations 1988 and for this reason, they should not be used in a private dwelling.

Furniture made of Brazilian Rosewood (Dalbergia Negra)

To comply with CITES Regulations on Post-1947 furniture made of Brazilian Rosewood, all post-war rosewood furniture items have Article 10 certificates.

If you are purchasing rosewood furniture for commercial purposes and not solely for your own use, CITES regulations require you to obtain your own certificate. You would need to contact the Animal Health and Veterinary Laboratories Agency ('AHVLA') and, as part of the process of obtaining your document, it is a requirement that you have seen sight of the Sworders' certificate or are aware of its reference number.

It is therefore the responsibility of commercial buyers to ensure that they obtain a copy of the appropriate certificate, or the certificate reference number, after purchase from Sworders Fine Art Auctioneers. Items are marked with this sign §. For confirmation of the certificate number, please refer to our website (www.sworder.co.uk).

TERMS OF SALE

Both the sale of goods at our auctions and your relationship with us are governed by the Terms of Consignment (primarily applicable to sellers) the Terms of Sale (primarily applicable to bidders and buyers) and any notices displayed in the saleroom or announced by us at the auction (collectively, the "Conditions of Business"). The Terms of Consignment and Terms of Sale are available at our saleroom on request.

Please read these Terms of Sale carefully. Please note that if you register to bid and/or bid at auction this signifies that you agree to and will comply with these Terms of Sale.

Please note that these Terms of Sale relate to auctions held at our premises only. We have separate terms for online only auctions.

1. Definitions and interpretation

To make these Terms of Sale easier to read, we have given the following words a specific meaning:

"Auctioneer"	means GES & Sons Ltd trading as Sworders Fine Art Auctioneers, a company registered in England and Wales with registration number 6858916 and whose registered office is located at Cambridge Road, Stansted Mountfitchet, Essex CM24 8GE or its authorised auctioneer, as appropriate;
"Bidder"	means a person who places a bid for Goods at our auction;
"Buyer"	means the person who makes the highest bid for the Goods accepted by the Auctioneer;
"Commission"	means the commission that we charge you on the sale of the Goods as set out in Clause 5 below;
"Consumer"	means an individual acting for purposes which are wholly or mainly outside that individual's trade, business, craft or profession;
"Consumer Contracts Regulations"	means the Consumer Contracts (Information, Cancellation and Additional Charges) Regulations 2013;
"Deliberate Forgery"	means: (a) an imitation made with the intention of deceiving as to authorship, origin, date, age, period, culture or source; (b) which is described in the catalogue as being the work of a particular creator without qualification; and (c) which at the date of the auction had a value materially less than it would have had if it had been as described;
"FCA"	means the Financial Conduct Authority;
"Goods"	means the goods that you consign to us for sale at our auction;
"Hammer Price"	means the level of the highest bid for a Lot accepted by the Auctioneer;
"Premium"	means the premium charged to the Buyer on the sale of the Goods in accordance with the Terms of Sale;
"Price"	means the total of the Hammer Price, Premium and any applicable VAT;
"Proceeds"	means the Price less the Commission, the Premium, any expenses incurred to your account and any applicable VAT;
"Reserve"	means the minimum price at which the Goods may be sold;
"Seller"	means the owner of the Goods and any agent who consigns the Goods for sale on the owner's behalf (if applicable);
"Terms of Consignment"	means these terms of consignment;
"Terms of Sale"	means the terms of sale for bidders or buyers at our auctions;
"Trader"	means a Seller who is acting for purposes relating to that Seller's trade, business, craft or profession, whether acting personally or through another person acting in the trader's name or on the trader's behalf (such as an agent and/or the Auctioneer);
"VAT"	means any value added tax or equivalent sales tax; and
"Website"	means our website available at www.sworders.co.uk .

In these Terms of Sale the words 'you', 'yours', etc. refer to you as the Buyer. The words "we", "us", etc. refer to the Auctioneer. Any reference to a 'Clause' is to a clause of these Terms of Sale unless stated otherwise.

2. Information that we are required to give to Consumers

2.1 A description of the main characteristics of each Lot as contained in the auction catalogue.

2.2 Our name, address and contact details as set out herein, in our auction catalogues and/or on our Website.

2.3 The price of the Goods and arrangements for payment as described in Clauses 4, 5, 7 and 8.

2.4 The arrangements for collection of the Goods as set out in Clauses 8 and 9.

2.5 Your right to return a Lot and receive a refund if the Lot is a Deliberate Forgery as set out in Clause 13.

2.6 We and Trader Sellers have a legal duty to supply any Lots to you in accordance with these Terms of Sale.

2.7 If you have any complaints, please send them to us directly at the address set out on our Website.

3. Bidding procedures and the Buyer

3.1 You must register your details with us before bidding and provide us with any requested proof of identity and billing information, in a form acceptable to us. You must also satisfy any security arrangements we have in place before entering the auction room to view or bid.

3.2 We strongly recommend that you attend the auction in person. You are responsible for your decision to bid for a particular Lot. If you bid on a lot, including by telephone and online bidding, or by placing a commission bid, we assume that you have carefully inspected the Lot and satisfied yourself regarding its condition.

3.5 Bidders will be deemed to act as principals, even if the Bidder is acting as an agent for a third party.

3.6 We may bid on Lots on behalf of the Seller up to one bid below the Reserve.

3.7 We may refuse to accept any bid if it is reasonable for us to do so.

3.8 Bidding increments will be at our sole discretion (but will be in line with standard auction practice).

4. The purchase price

As Buyer, you will pay:

- the Hammer Price;
- a premium of 23% plus VAT of the Hammer Price or 15% plus VAT for our Fine Wine and Port Auction;
- any artist's resale right royalty payable on the sale of the Lot; and
- any VAT due.

5 VAT

5.1 You shall be liable for the payment of any VAT applicable on the Hammer Price and premium due for a Lot. Please see the symbols used in the auction catalogue for that Lot and the "Information for Buyers" in our auction catalogue for further information.

5.2 We will charge VAT at the current rate at the date of the auction.

6. The contract between you and the Seller

6.1 The contract for the purchase of the Lot between you and the Seller will be formed after the hammer falls when the highest bid for the Goods at the auction is written into the Auction book by the Auctioneer.

6.2 You may directly enforce any terms in the Terms of Consignment against a Seller to the extent that you suffer damages and/or loss as a result of the Seller's breach of the Terms of Consignment.

6.3 If you breach these Terms of Sale, you may be responsible for damages and/or losses suffered by a Seller or us. If we are contacted by a Seller who wishes to bring a claim against you, we may in our discretion provide the Seller with information or assistance in relation to that claim.

6.4 We normally act as an agent only and will not have any responsibility for default by you or the Seller (unless we are the Seller of the Lot).

7. Payment

7.1 Immediately following your successful bid on a Lot you will:

7.1.1 give to us, if not already provided to our satisfaction, proof of identity in a form acceptable to us (and any other information that we require in order to comply with our anti-money laundering obligations); and

7.1.2 pay to us the Total Amount Due in any way that we agree to accept payment. Note there is an upper limit of 10,000 euros equivalent for payments in cash.

7.2 If you owe us any money, we may use any payment made by you to repay these debts.

8. Title and collection of purchases

8.1 Once you have paid us in full the Total Amount Due for any Lot, ownership of that Lot will transfer to you. You may not claim or collect a Lot until you have paid for it.

8.2 You will (at your own expense) collect any Lots that you have purchased and paid for not later than 5pm on the Friday following the auction.

8.3 If you do not collect the Lot within this time period, you will be responsible for any reasonable removal and storage charges in relation to that Lot.

8.4 Risk of loss or damage to the Lot will pass to you when you (or your agents) take physical possession of the Lot.

8.5 If you do not collect the Lot that you have paid for within thirty days after the auction, we may sell the Lot. We will pay the proceeds of any such sale to you, but will deduct any storage charges or other sums that we have incurred in the storage and sale of the Lot. We reserve the right to charge you a selling commission at our standard rates on any such resale of the Lot.

9. Remedies for non-payment or failure to collect purchases

9.1 Please do not bid on a Lot if you do not intend to buy it. If your bid is successful, these Terms of Sale will apply to you.

3.3 If you instruct us in writing, we may execute commission bids on your behalf. Neither we nor our employees or agents will be responsible for any failure to execute your commission bid, unless our failure to do so is unreasonable. Where two or more commission bids at the same level are recorded we have the right to prefer the first bid made (where this can be reasonably ascertained).

3.4 The Bidder placing the highest bid for a Lot accepted by the Auctioneer will be the Buyer at the Hammer Price. Any dispute about a bid will be settled at our discretion. We may reoffer the Lot during the auction or may settle the dispute in another way. We will act reasonably when deciding how to settle the dispute.

This means that you will have to carry out your obligations set out in these Terms of Sale. If you do not comply with these Terms of Sale we may (acting on behalf of the Seller and ourselves) pursue one or more of the following measures:

9.1.1 take action against you for damages for breach of contract;

9.1.2 reverse the sale of the Lot to you and/or any other Lots sold by us to you;

9.1.3 resell the Lot by auction or private treaty (in which case you will have to pay any difference between the price you should have paid for the Lot and the price we sell it for as well as the charges outlined in Clause 8.5). Please note that if we sell the Lot for a higher amount than your winning bid, the extra money will belong to the Seller;

9.1.4 remove, store and insure the Lot at your expense;

9.1.5 if you do not pay us within **five business days** of your successful bid, we may charge interest at a rate not exceeding 1.5% per month on the total amount due;

9.1.6 keep that Lot or any other Lot sold to you until you pay the Total Amount Due;

9.1.7 reject or ignore bids from you or your agent at future auctions or impose conditions before we accept bids from you; and/or

9.1.8 if we sell any Lots for you, use the money made on these Lots to repay any amount you owe us.

9.2 We will act reasonably when exercising our rights under Clause 9.1. We will contact you before exercising these rights and try to work with you to correct any non-compliance by you with these Terms of Sale.

10. Health and safety

Although we take reasonable precautions regarding health and safety, you are on our premises at your own risk. Please note the lay-out of the premises and security arrangements. Neither we nor our employees or agents are responsible for the safety of you or your property when you visit our premises, unless you suffer any injury to your person or damage to your property as a result of our, our employees' or our agents' negligence.

11. Warranties

11.1 The Seller warrants to us and to you that:

11.1.1 the Seller is the true owner of the Lot for sale or is authorised by the true owner to offer and sell the lot at auction;

11.1.2 the Seller is able to transfer good and marketable title to the Lot to you free from any third party rights or claims; and

11.1.3 as far as the Seller is aware, the main characteristics of the Lot set out in the auction catalogue (as amended by any notice displayed in the saleroom or announced by the Auctioneer at the auction) are correct.

11.2 If, after you have placed a successful bid and paid for a Lot, any of the warranties above are found not to be true, please notify us in writing. Neither we nor the Seller will be liable to pay you any sums over and above the Total Amount Due and we will not be responsible for any inaccuracies in the information provided by the Seller except as set out below.

11.3 Please note that many of the Lots that you may bid on at our auction are second-hand.

11.4 If a Lot is not second-hand and you purchase the Lot as a Consumer from a Seller that is a Trader, a number of additional terms may be implied by law in addition to the Seller's warranties set out at Clause 11.1 (in particular under the Consumer Rights Act 2015). These Terms of Sale do not seek to exclude your rights under law as they relate to the sale of these Lots.

11.5 Save as expressly set out above, all other warranties, conditions or other terms which might have effect between the Seller and you, or us and you, or be implied or incorporated by statute, common law or otherwise are excluded.

12. Descriptions and condition

12.1 Our descriptions of the Lot will be based on: (a) information provided to us by the Seller of the Lot (for which we are not liable); and (ii) our opinion (although it is likely that we will not be able to carry out a detailed inspection of each Lot).

12.2 We will give you a number of opportunities to view and inspect the Lots before the auction. You (and any independent consultants acting on your behalf) must satisfy yourself about the accuracy of any description of a Lot. We shall not be responsible for any failure by you or your consultants to properly inspect a Lot.

12.3 Representations or statements by us as to authorship, genuineness, origin, date, age, provenance, condition or estimated selling price involve matters of opinion. We undertake that any such opinion will be honestly and reasonably held and accept liability for opinions given negligently or fraudulently.

12.4 Please note that Lots (in particular second-hand Lots) are unlikely to be in perfect condition. Lots are sold "as is" (i.e. as you see them at the time of the auction). Neither we nor the Seller accept any liability for the condition of second-hand Lots or for any condition issues affecting a Lot if such issues are included in the description of a Lot in the auction catalogue (or in any saleroom notice) and/or which the inspection of a Lot by the Buyer ought to have revealed.

13. Deliberate Forgeries

13.1 You may return any Lot which is found to be a Deliberate Forgery to us within 30 days of the auction provided that you return the Lot to us in the same condition as when it was released to you, accompanied by a written statement identifying the Lot from the relevant catalogue description and a written statement of defects.

13.2 If we are reasonably satisfied that the Lot is a Deliberate Forgery we will refund the money paid by you for the Lot (including any Premium and applicable VAT) provided that if:

13.2.1 the catalogue description reflected the accepted view of experts as at the date of the auction; or

13.2.2 you personally are not able to transfer good and marketable title in the Lot to us, you will have no right to a refund under this Clause 13.2.

13.3 If you have sold the Lot to another person, we will only be liable to refund the price that you paid for the Lot. We will not be responsible for repaying any additional money you may have made from selling the Lot.

13.4 Your right to return a Lot that is a Deliberate Forgery does not affect your legal rights and is in addition to any other right or remedy provided by law or by these Terms of Sale.

14. Our liability to you

14.1 We will not be liable for any loss of opportunity or disappointment suffered as a result of participating in our auction.

14.2 In addition to the above, neither we nor the Seller shall be responsible to you and you shall not be responsible to the Seller or us for any other loss or damage that any of us suffer that is not a foreseeable result of any of us not complying with the Conditions of Business. Loss or damage is foreseeable if it is obvious that it will happen or if at the time of the sale of the Lot, we, you and the Seller knew it might happen.

14.3 Subject to Clause 14.4, if we are found to be liable to you for any reason (including, amongst others, if we are found to be negligent, in breach of contract or to have made a misrepresentation), our liability will be limited to the total purchase price paid by you to us for any Lot.

14.4 Notwithstanding the above, nothing in these Terms of Sale shall limit our liability (or that of our employees or agents) for:

14.4.1 death or personal injury resulting from negligence (as defined in the Unfair Contract Terms Act 1977);

14.4.2 fraudulent misrepresentation; or

14.4.3 any liability which cannot be excluded by law.

15. Notices

15.1 All notices between you and us regarding these Terms of Sale must be in writing and signed by or on behalf of the party giving it.

15.2 Any notice referred in Clause 15.1 may be given:

15.2.1 by delivering it by hand;

15.2.2 by first class pre-paid post or Recorded Delivery; or

15.2.3 by email, provided that receipt of the email is acknowledged by the recipient.

15.3 Notices must be sent:

15.3.1 by hand or registered post:

a. to us, at our address set out in these Terms of Sale or at our registered office address appearing on our Website; and

b. to you, at the last postal address that you have given to us as your contact address in writing; or

15.3.2 by email:

a. to us, by sending the notice to the following email address: auctions@sworder.co.uk

b. to you, by sending the notice to any email address that you have given to us as your contact email address in writing.

15.4 Notices will be deemed to have been received:

15.4.1 if delivered by hand, on the day of delivery;

15.4.2 if sent by first class pre-paid post or Recorded Delivery, two business days after posting, exclusive of the day of posting; or

15.4.3 if sent by email, at the time of transmission unless sent after 17.00 in the place of receipt in which case they will be deemed to have been received on the next business day in the place of receipt (provided that receipt is acknowledged by the recipient).

15.5 Any notice or communication given under these Terms of Sale will not be validly given if sent by fax, email, any form of messaging via social media or text message.

16. Data Protection

We will hold and process any personal data in relation to you in accordance with our current privacy policy, a copy of which is available on our website.

17. General

17.1 We may, acting reasonably, refuse admission to our premises or attendance at our auctions by any person.

17.2 We act as an agent for our Sellers. The rights we have to claim against you for breach of these Terms of Sale may be used by either us, our employees or agents, or the Seller, its employees or agents, as appropriate. Other than as set out in this Clause, these Terms of Sale are between you and us and no other person will have any rights to enforce any of these Terms of Sale.

17.3 We may use special terms in the catalogue descriptions of particular Lots. You must read these terms carefully along with any glossary provided in our auction catalogues.

17.4 Each of the clauses of these Terms of Sale operates separately. If any court or relevant authority decides that any of them are unlawful, the remaining clauses will remain in full force and effect.

17.5 We may change these Terms of Sale from time to time, without notice to you. Please read these Terms of Sale carefully, as they may be different from the last time you read them.

17.6 Except as otherwise stated in these Terms of Sale, each of our rights and remedies are: (a) in addition to and not exclusive of any other rights or remedies under these Terms of Sale or general law; and (b) may be waived only in writing and specifically. Delay in exercising or non-exercise of any right under these Terms of Sale is not a waiver of that or any other right. Partial exercise of any right under these Terms of Sale will not preclude any further or other exercise of that right or any other right under these Terms of Sale. Waiver of a breach of any term of these Terms of Sale will not operate as a waiver of breach of any other term or any subsequent breach of that term.

17.7 These Terms of Sale and any dispute or claim arising out of or in connection with them (including any non-contractual claims or disputes) shall be governed by and construed in accordance with the laws of England and the parties irrevocably submit to the exclusive jurisdiction of the English courts.

These terms are based upon the recommended terms of sale by the Society of Fine Art Auctioneers and Valuers







www.sworder.co.uk

The Stansted Auction Rooms

Cambridge Road
Stansted Mountfitchet
Essex CM24 8GE

Tel 01279 817778

Fax 01279 817779

Email auctions@sworder.co.uk

Hertford Office

42 St Andrew Street
Hertford SG14 1JA

Tel 01992 583508

Fax 01992 586074

Email hertfordoffice@sworder.co.uk

London Office

15 Cecil Court
London
WC2N 4EZ

Tel 0203 971 2500

Email london@sworder.co.uk

Kent Office

Tel 01732 757675
Email kent@sworder.co.uk

